

Alex Martin

3D Modeler & Graphic Designer

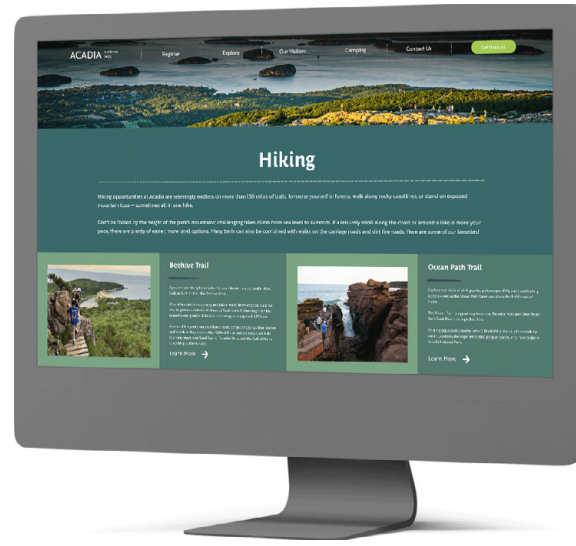
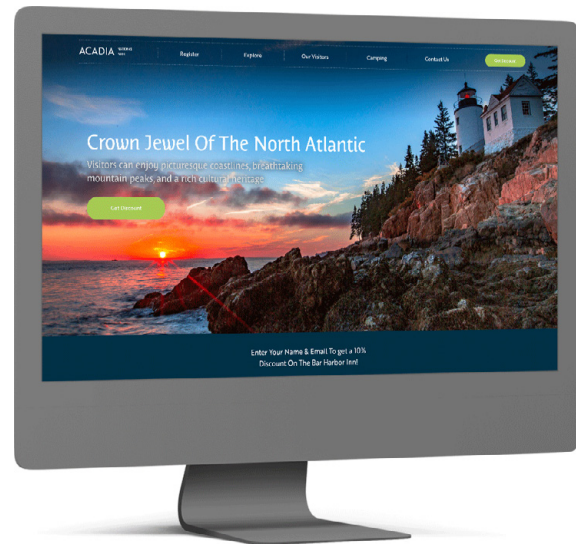




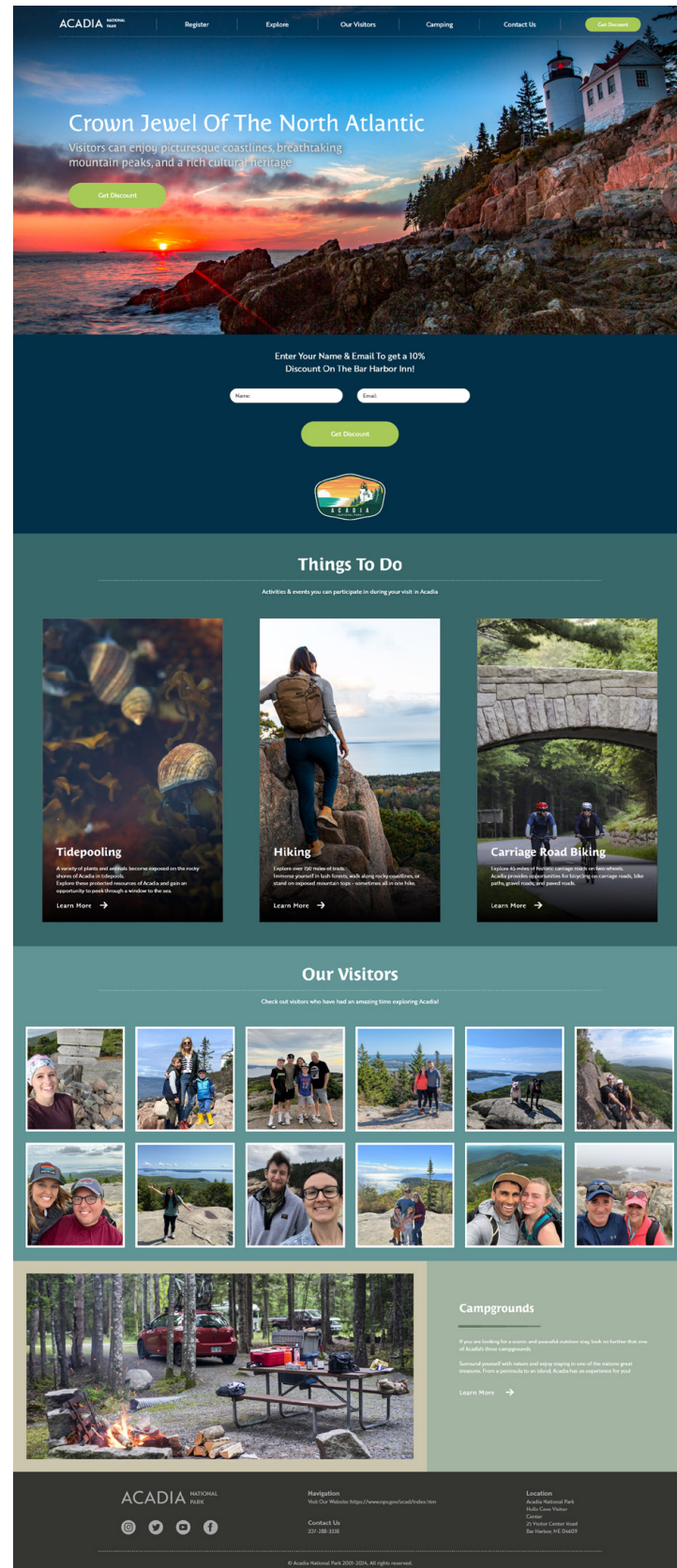
ACADIA National Park

This project is a landing page for the Acadia National Park in Maine. Acadia is one of my favorite national parks, and I wanted to highlight what the park has to offer. This project showcases my skills in web design, and my ability to incorporate design motifs and consistency in design, maintaining a minimalistic style that compliments the natural and untamed nature of the park.

Mockups



Website Layout



Logo

ACADIA National Park

Costa Std Bold

ABCDEFGHIJKLMNOPQRSTUVWXYZ
abcdefghijklmnopqrstuvwxyz
1234567890!@#%&

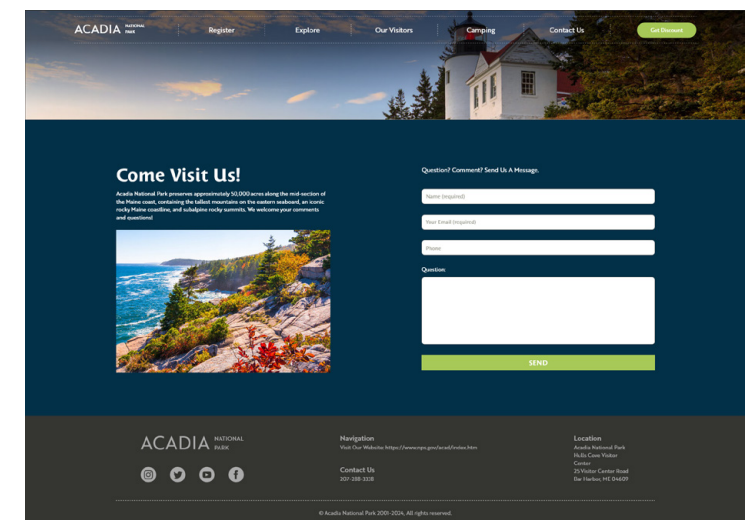
Brother 1816 Medium

ABCDEFGHIJKLMNOPQRSTUVWXYZ
abcdefghijklmnopqrstuvwxyz
1234567890!@#%&

Brother 1816 Book

ABCDEFGHIJKLMNOPQRSTUVWXYZ
abcdefghijklmnopqrstuvwxyz
1234567890!@#%&

Website Link





MAINTAINERS

Maintainers is a non-profit organization dedicated to the maintenance and support of Pennsylvania's hiking and backpacking trails. The organization focuses on volunteer work and fostering stewardship in the hiking community at large, educating and encouraging the continued enjoyment of hiking and backpacking trails throughout Pennsylvania.

I was inspired by my many years in the Scouts of America and my experience as an Eagle Scout, as well as my appreciation for retro design. This project showcases my ability to build a cohesive brand, maintaining a consistent style across merchandise and additional assets that reflect the brand's attitude and ideals.

Preliminary



Final



Kit of Parts



CHIPPEWA FALLS

ABCDEFGHIJKLMNOPQRSTUVWXYZ

ABCDEFGHIJKLMNOPQRSTUVWXYZ

1234567890!@#%&



Merchandise Logo

MAINTAINERS

Pins



Water Bottle



Shirt



Vehicle Wrap





Email Newsletters

These emailers feature three organizations, each with different audiences, goals, and aesthetics. These designs highlight my ability to design for companies and organizations with different styles and mediums. But more importantly, demonstrate effective visual communication that acknowledge the distinctiveness of each organization, but also employ stylistic and functional consistencies that are a hallmark of my work.



OBJECT IN MOTION TOUR

RESERVE YOUR SEAT








BUY MERCH

f t i y w



WELCOME TO PORTS OF ITALY



EXPERIENCE ITALY IN THE HEART OF BOOTHBAY HARBOR

Lorem ipsum dolor sit amet consectetur adipiscing elit. Quisque faucibus ex sapien vitae pellentesque sem placerat. In id cursus mi pretium tellus dui conwallis. Tempus leo eu aenean sed diam urna tempor. Pulvinar vivamus fringilla lacus nec metus bibendum egestas. Jaculis massa nisl malesuada lacinia integer nunc posuere. Ut hendrerit semper vel class aptant taciti sociosqu. Ad litora torquent per conubia nostra inceptos himenaeos.

Reserve Now ▶


From our kitchen to your table, every dish reflects a passion for authenticity, tradition, and the simple joy of sharing good food among friends.

INSPIRED ITALIAN CUISINE. HONEST HOSPITALITY.

Lorem ipsum dolor sit amet consectetur adipiscing elit. Quisque faucibus ex sapien vitae pellentesque sem placerat. In id cursus mi pretium tellus dui conwallis. Tempus leo eu aenean sed diam urna tempor. Pulvinar vivamus fringilla lacus nec metus bibendum egestas. Jaculis massa nisl malesuada lacinia integer nunc posuere. Ut hendrerit semper vel class aptant taciti sociosqu. Ad litora torquent per conubia nostra inceptos himenaeos.

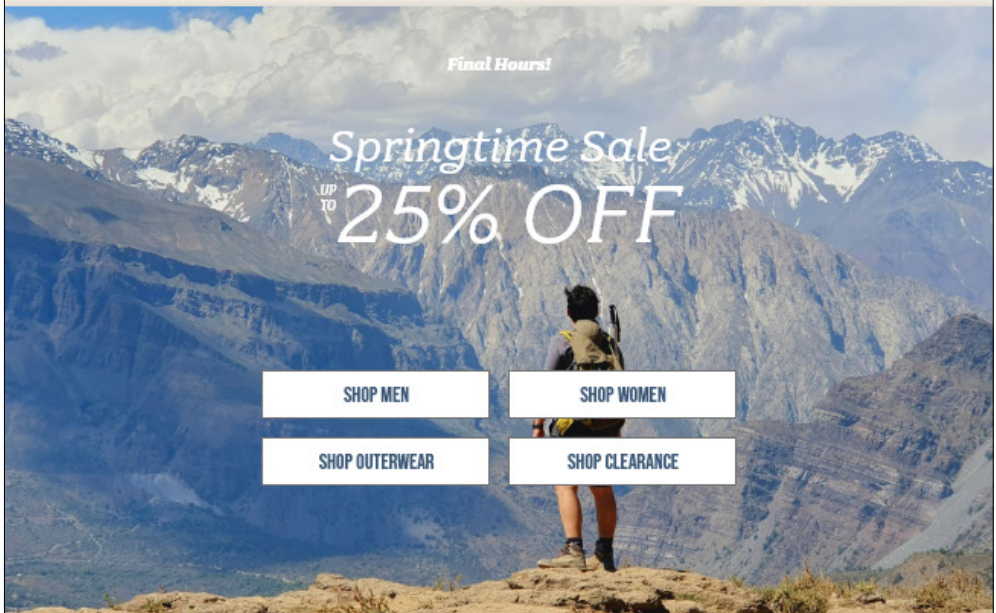
Explore Our Menu ▶

f t i y w




Final Hours!

Springtime Sale UP TO 25% OFF




SHOP MEN SHOP WOMEN SHOP OUTERWEAR SHOP CLEARANCE


Shop Now ▶




Shop Now ▶



Shop Now ▶



Shop Now ▶



Eddie Bauer

f t i y w

Contact Us 888-680-5682 Visit Our Website: https://www.eddiebauer.com/

Navigation

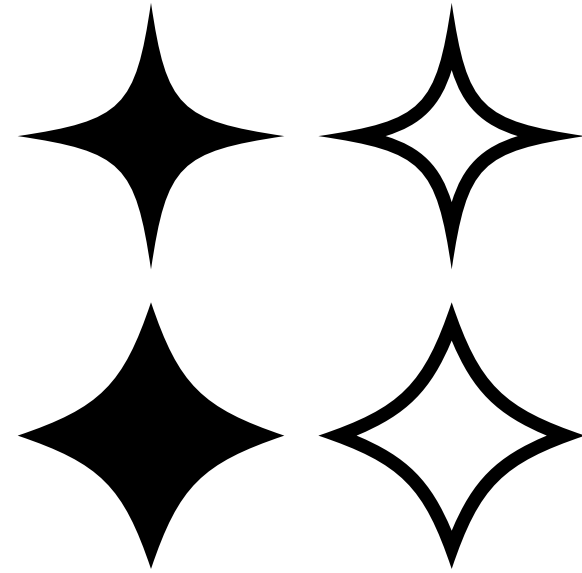
Location 2200 1st Ave S, Suite 400, Seattle, WA 98134



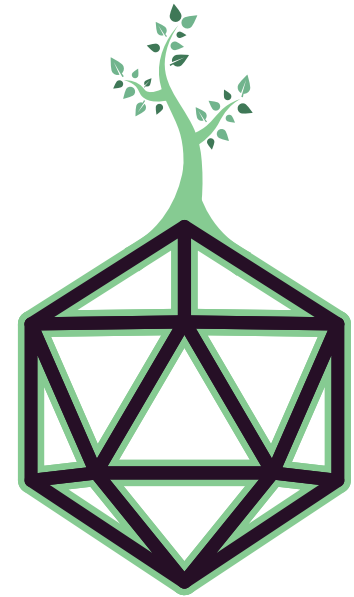
World Tree Dice Co.

World Tree Dice Company is a fictional dice company inspired by Norse mythology and tabletop roleplaying games. This brand combines a clean and relaxing style with medieval and fantasy motifs, showcasing my skills in web design.

Kit of Parts



Logo



World Tree
Dice Co.

Kit of Parts



Dutch Medieval Pro Bold

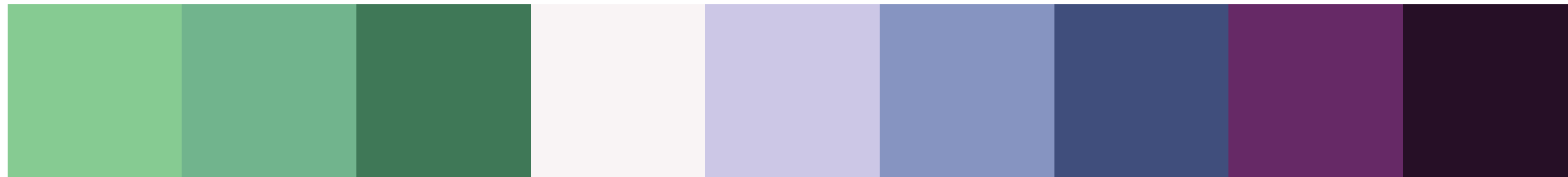
ABCDEFGHIJKLMNOPQRSTUVWXYZ
abcdefghijklmnopqrstuvwxyz
1234567890!@#%&

Bree Serif Regular

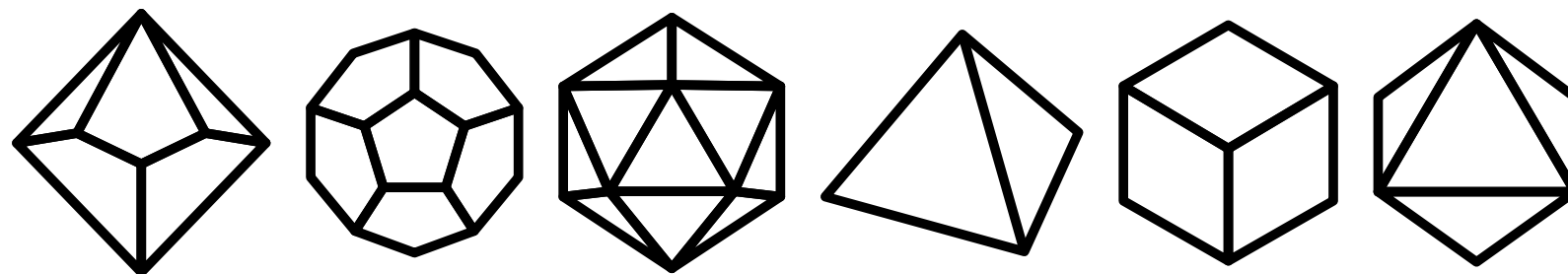
ABCDEFGHIJKLMNOPQRSTUVWXYZ
abcdefghijklmnopqrstuvwxyz
1234567890!@#%&

Oso Serif Regular

ABCDEFGHIJKLMNOPQRSTUVWXYZ
abcdefghijklmnopqrstuvwxyz
1234567890!@#%&



Kit of Parts



World Tree Dice Co. Shop About Blog Contact

Unleash Your Psychic Power

Astral Plane Dice Set

Available Now!

Shop Now

Latest Releases

Turquoise Dice Set

Buy Now

Copper Dice Set

Buy Now

Check Out Our Blog

Dice Tray Coming Soon

Paintable Mini-Figures Coming Soon

Storm Dice Drop

Visit Blog

World Tree Dice Co.

World Tree Dice Co. Shop About Blog Contact

Contact Us

Questions? Comments? Send Us a Message.

Name (required)

Email (required)

Phone

Comments

Submit

World Tree Dice Co.

World Tree Dice Co. Shop About Blog Contact

About Us

About World Tree Dice Co.

Lorem ipsum dolor sit amet consectetur adipiscing elit. Ex sapien vitae pellentesque sem placerat in id. Pretium tellus duis convalis tempus leo eu aenean. Urna tempor pulvinar vivamus fringilla lacus nec metus. laculla massa nisl malesuada lacinia iringer nunc posare. Semper vel class aptent taciti sociosque ad litora. Conubia nostra inceptos himenaeos orci varius natoque penatibus.

Dis parturient montes nascetur ridiculus mus donec rhoncus. Nulla molestie mattis scelerisque maximus eget fermentum odio.

Ligula congue sollicitudin erat viverra ac tincidunt nam. Lectus commodo aequae arcus dignissim velit aliquam imperdiet. Cras eleifend turpis fames primis vulputate ornare sagittis. Libero feugiat tristique accusamus maecenas potenti ultricies habitant.

World Tree Dice Co.

World Tree Dice Co. Shop About Blog Contact

Blog

March 23 | Alexander Martin

Dice Tray Coming Soon

Reservations opening June 21!

Read More

March 16 | Alex Martin

Paintable Mini-Figures Coming Soon

March 8 | Alex T. Martin

Limited Time Storm Dice Drop

February 28 | A.T Martin

Donation to Extra Life Foundation

February 17 | Alex Martin

Quisque faucibus ex sapien vitae

Quisque faucibus ex sapien vitae

Quisque faucibus ex sapien vitae

World Tree Dice Co.

The left side of the image features a solid red background with intricate white wavy lines that resemble topographical contour lines or organic, flowing patterns. These lines vary in thickness and form, creating a sense of depth and movement.

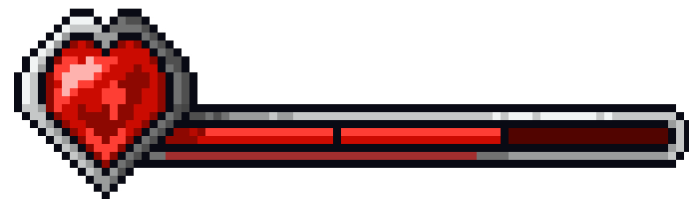
Hunt The Red Medallion

Hunt The Red Medallion is a 2D platforming game where you control an explorer searching for a mysterious red medallion, avoiding enemies and collecting power ups to aid you on your journey. This project was a collaborative effort between myself and three classmates, where I was responsible for creating the tileset and background art, programming, and acting as team lead. This project showcases my skills in creating compelling art for games, my programming skills, and my leadership abilities.

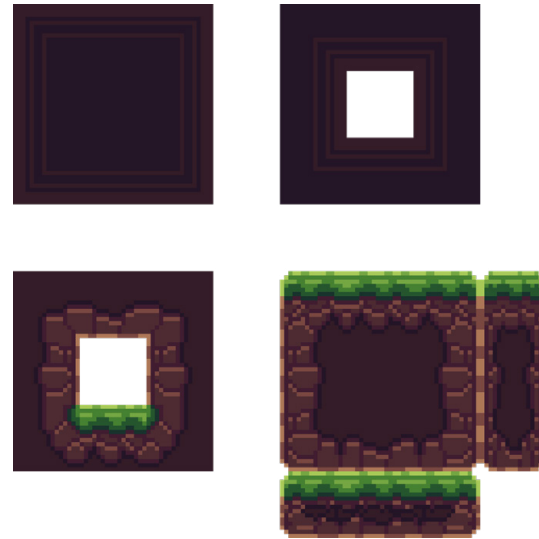
Preliminary Character Design



UI Assets



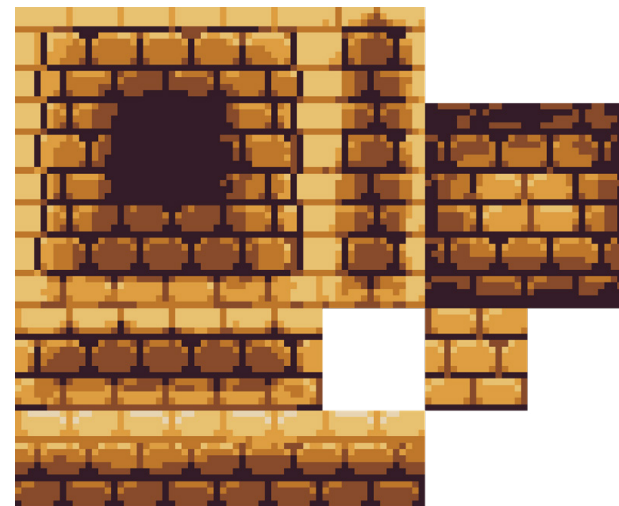
Jungle Level Tileset



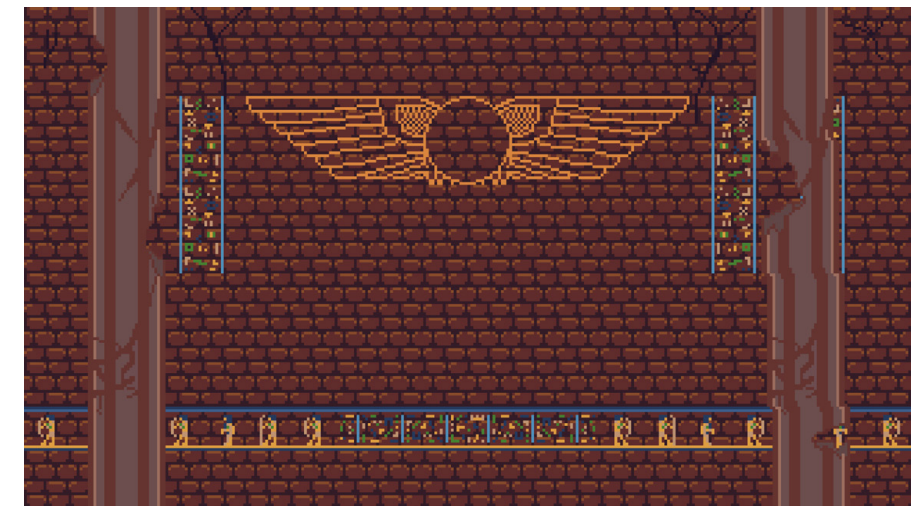
Jungle Level Background



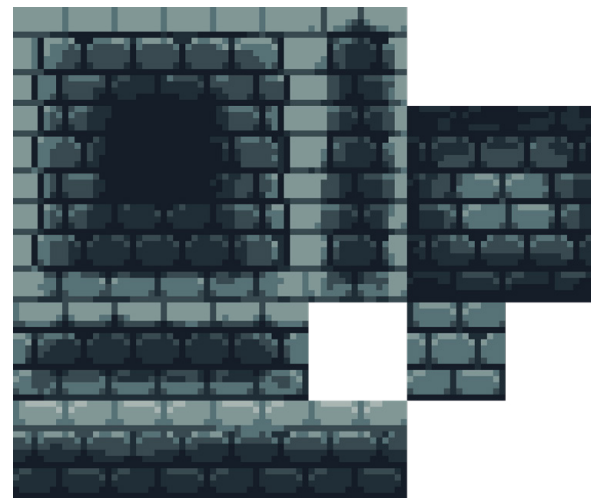
Pyramid Level Tileset



Pyramid Level Background



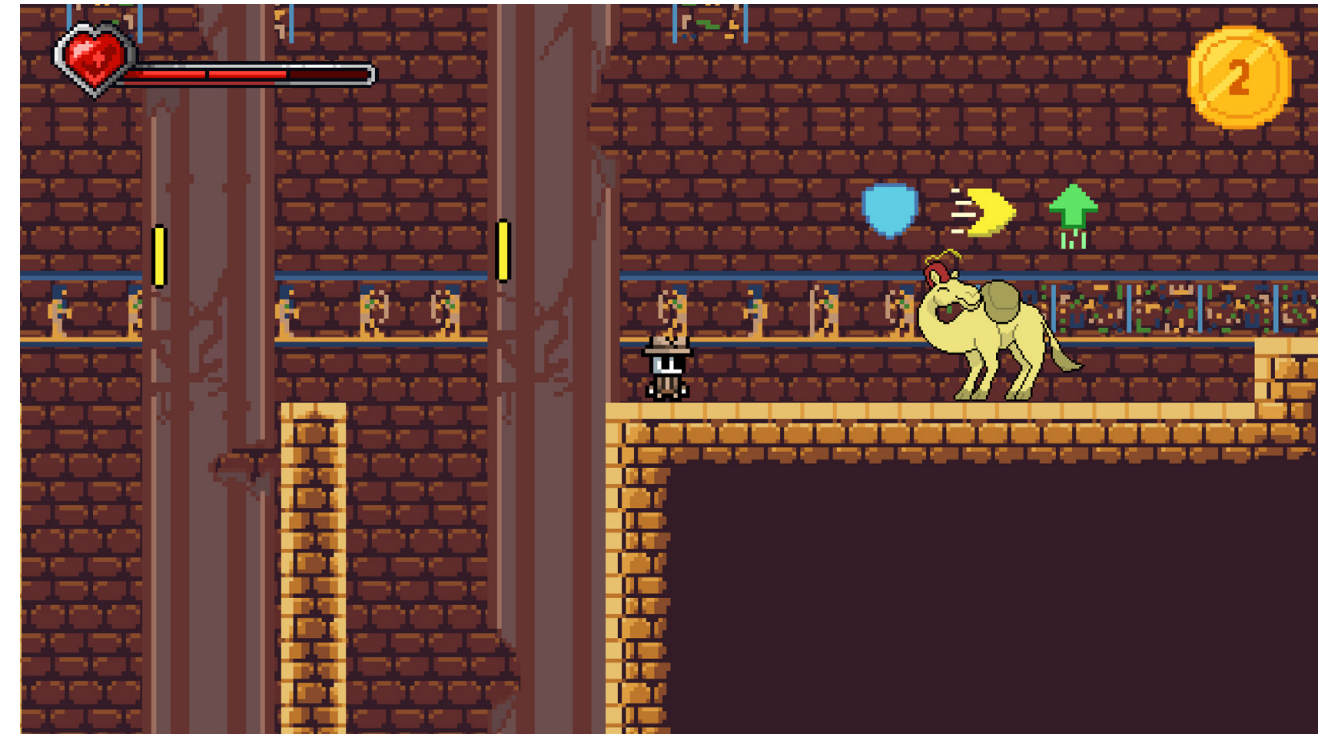
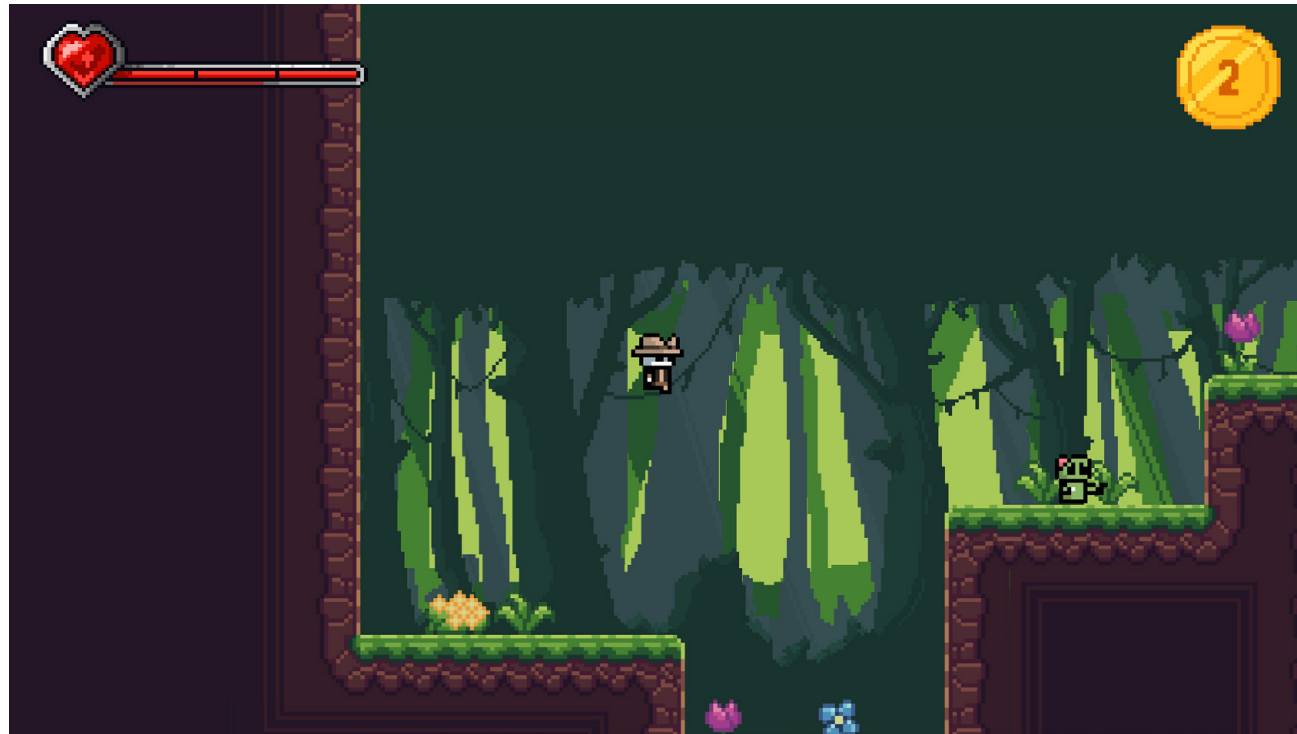
Museum Level Tileset



Museum Level Background



Screenshots



Hunt the Red Medallion





Scimitar

This 3D model, titled Scimitar, is inspired by my passion for fantasy and tabletop-roleplaying games. This projects goal was to create an imagined fantastical asset with texturing and detail to ground its fantasy nature in reality. Throughout this project I strengthened my skills in hard surface 3D modeling, texturing, UV mapping, and rendering.

Stills





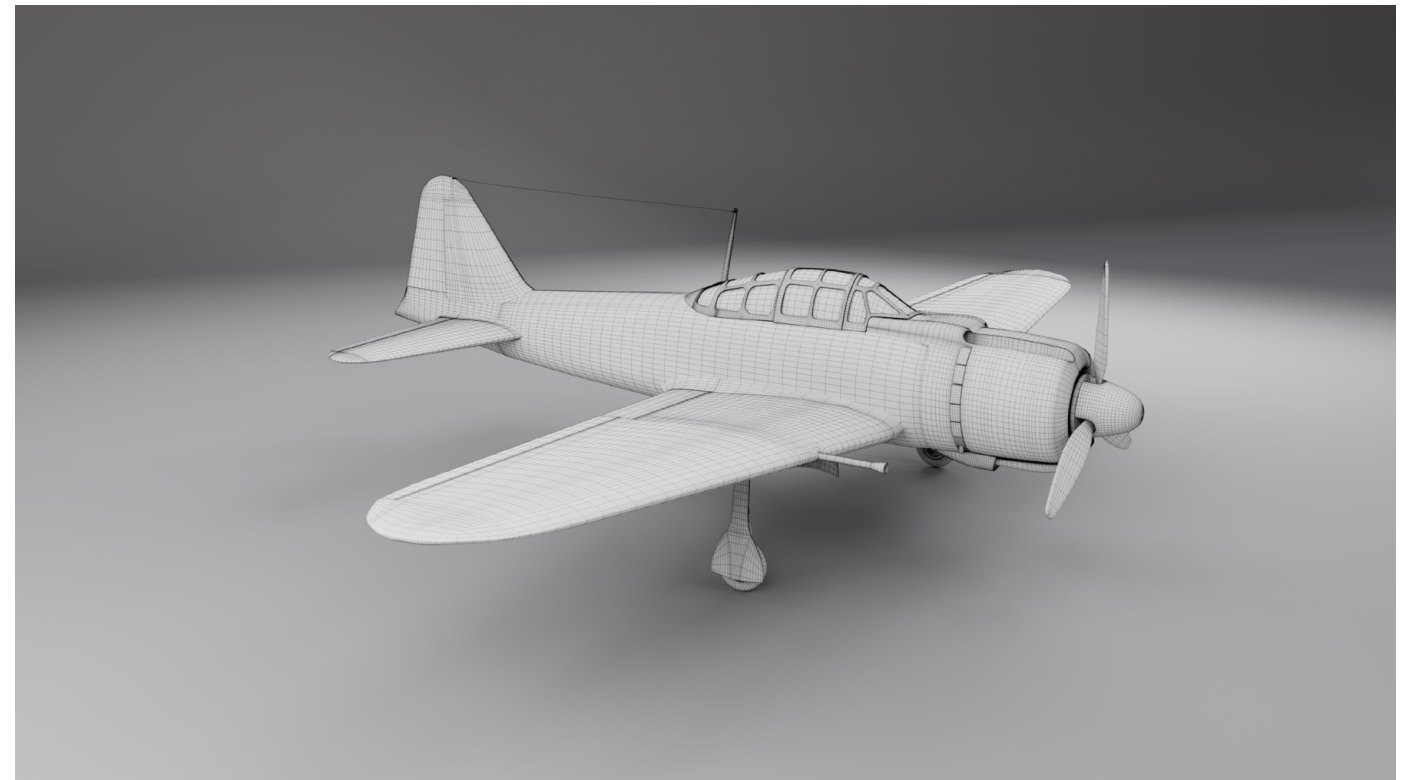
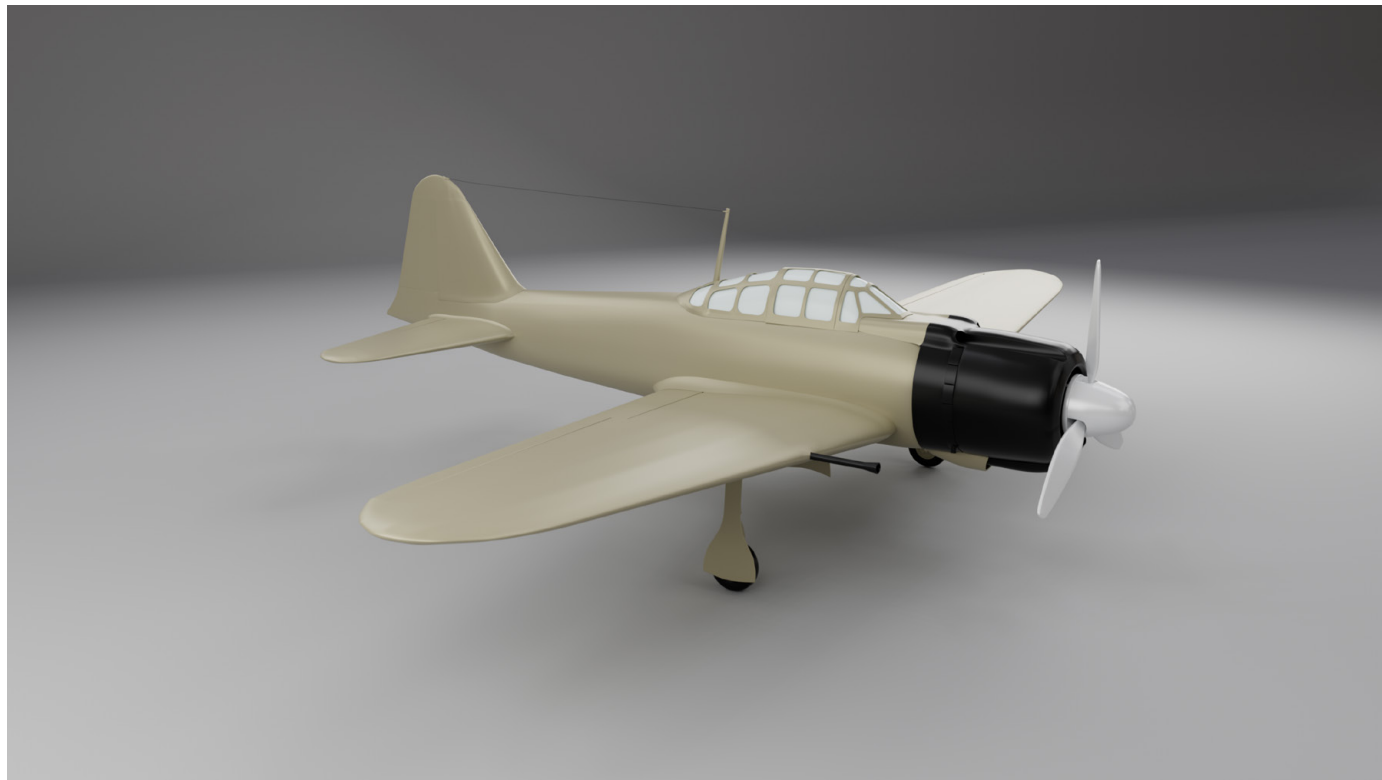
[Video Link](#)

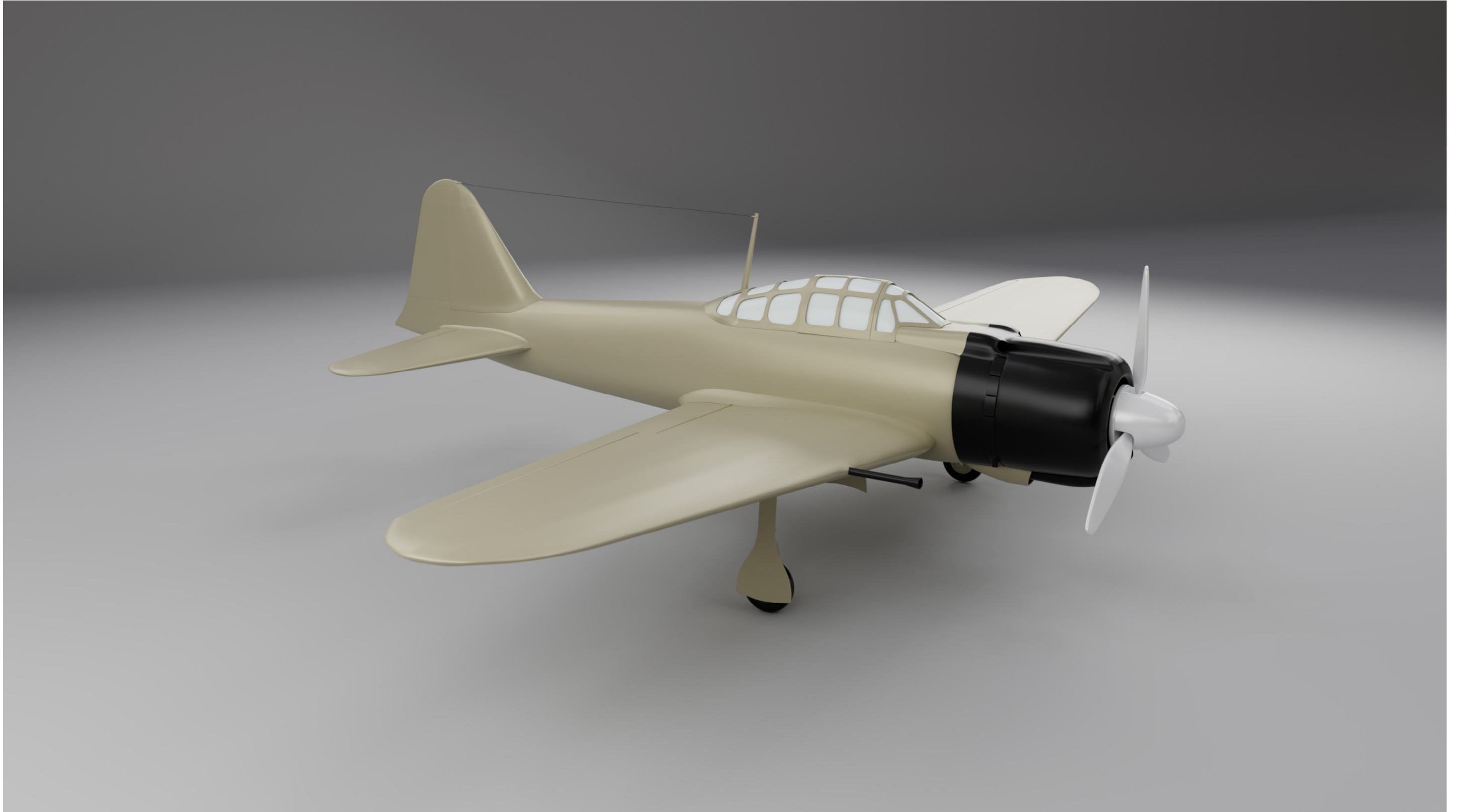


A6M ZERO FIGHTER PLANE

The A6M Zero was a fighter plane used by Japan in World War II. I was inspired to make this model due to my hobby in military history, and I wanted to create a large asset that would showcase what I could do with movement and animation. This piece is intended to be showcased in an educational context to highlight the engineering and history of these machines. This model showcases my skills in modeling large assets and animation.

Stills



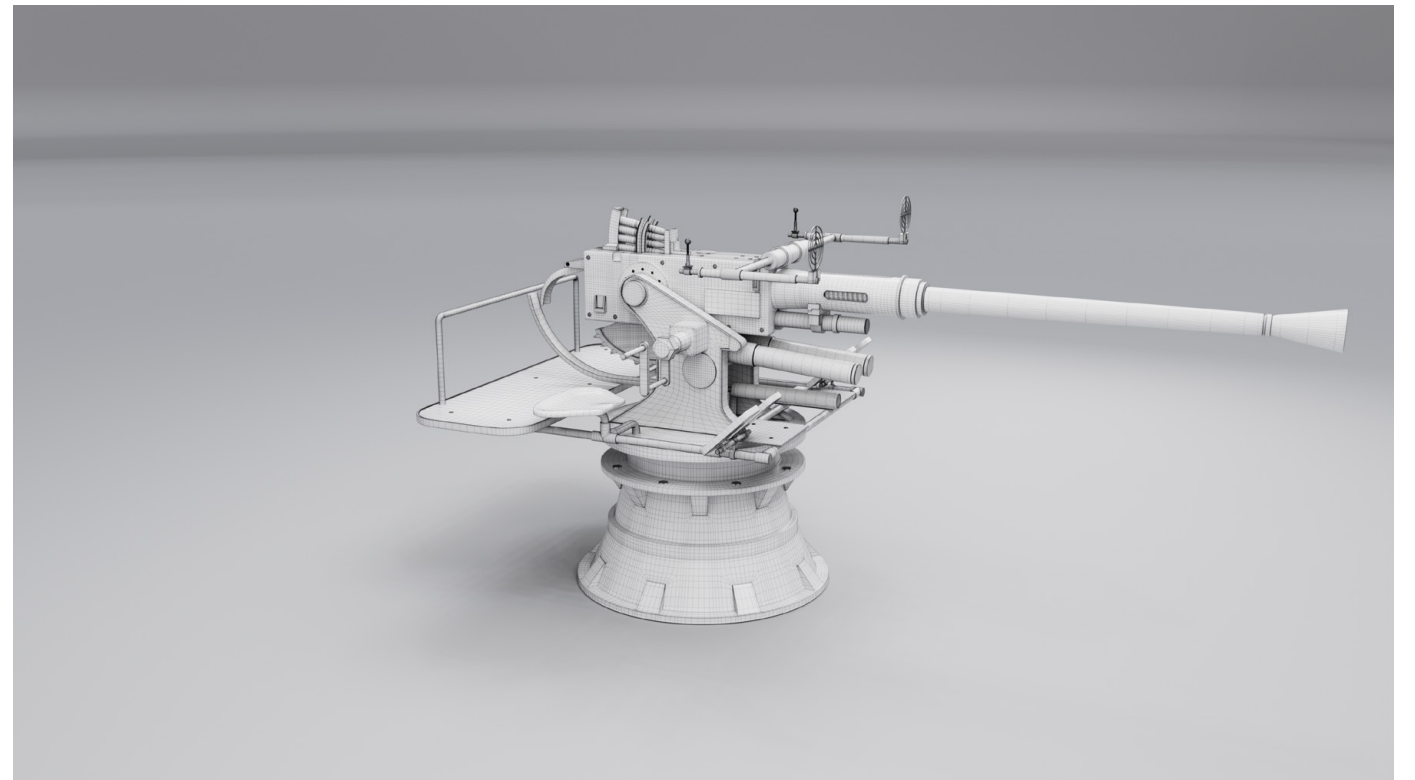
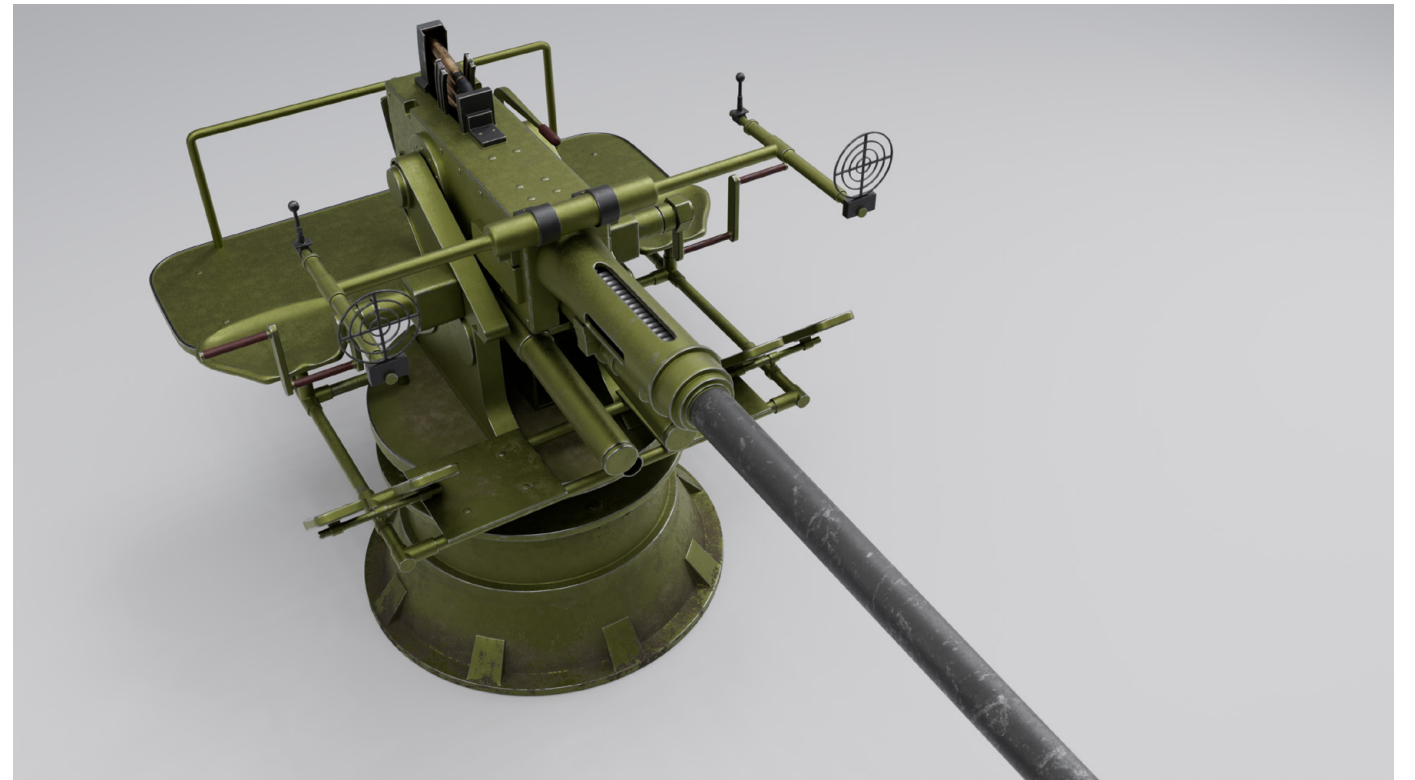


[Video Link](#)



BOFORS 40MM ANTI-AIRCRAFT CANNON

The Bofors Anti-Aircraft Cannon is a World-War-Two-Era Swedish cannon used by the Allied nations. I was inspired to make a 3D model of this cannon because my grandfather was in the Navy in the 1950's, and he had given me a shell casing from his time there. This piece is intended to be highly detailed for use mainly in educational settings such as museums and training modules. This model showcases my skills in modeling large, complex assets, as well as texturing and rendering.





[Video Link](#)

Thank You!



✉ alexmartingraphics@gmail.com

🌐 alexandermartindesign.com

