



Office of Information, Analysis and Planning — November 2009

2009–10 FACT BOOK



Table of Contents

STUDENTS	1
Fall Enrollment Trends	1
Fall Enrollment by Gender.....	2
Fall Enrollment by Ethnicity	3
Fall Enrollment Percentages	5
Fall Enrollment by Primary Major	6
Fall Enrollment by Residence	10
Fall Enrollment by Age Category	10
Fall Enrollment by State of Origin.....	11
International Students	12
First Generation College Students from Entering Freshman Class	12
Programs Offered	13
Degrees Granted by Department and Major.....	14
Admissions	16
Average SAT Scores for First-time Full-time Freshmen.....	16
Undergraduate Retention of First-time Full-time Freshmen	17
Graduation Rates for First-time Full-time Freshmen.....	18
Student Credit Hours by Department and Subject	19
Student Clubs.....	21
Leadership Institute	22
University College Programs and Services.....	22
Community Service.....	23
Career Placement of 2008 Graduates	23
Athletics.....	24
FACULTY AND STAFF	25
Staff by Category and Gender.....	25
Faculty by Gender and Tenure Status	26
Full-time Faculty by Department.....	27
Full-time Faculty Degrees.....	27
Faculty and Staff by Ethnicity	28

ORGANIZATIONAL CHARTS.....	29
Administrative	29
Finance and Support Operations	30
Academic Affairs.....	31
Enrollment Services.....	32
Advancement	33
Student Affairs	34
Marketing/Communications	35
FINANCES	36
Statement of Activities	36
Endowment and Other Long-Term Investments	37
Tuition, Fees, Room and Board Charges	38
Tuition Comparison, Wilkes and Other Institutions	40
Student Financial Aid	41
Wilkes Alumni	42
Funds Raised	43
<i>FACILITIES</i>	<i>44</i>
Building Inventory – Assignable Square Footage	44
Eugene S. Farley Library	46
Computing Inventory	47
<i>ACCREDITATIONS.....</i>	<i>47</i>
GLOSSARY.....	48

STUDENTS

Fall Enrollment Trends

As of official census date

	<u>2005</u>	<u>2006</u>	<u>2007</u>	<u>2008</u>	<u>2009</u>
Undergraduate					
Full-time	1,968	2,010	2,110	2,084	2,011
Part-time	220	235	226	225	229
Total	2,188	2,245	2,336	2,309	2,240
FTE	2,051	2,095	2,192	2,162	2,085
Graduate					
Full-time	157	173	215	277	303
Part-time	1,862	2,091	2,288	3,046	3,417
Total	2,019	2,264	2,503	3,323	3,720
FTE	903	1,017	1,168	1,566	1,781
First-Professional					
Full-time	272	267	274	268	279
Part-time	1	1	1	1	0
Total	273	268	275	269	279
FTE	272	267	274	268	279
Total					
Full-time	2,397	2,450	2,599	2,629	2,593
Part-time	2,083	2,327	2,515	3,272	3,646
Total	4,480	4,777	5,114	5,901	6,239
FTE	3,226	3,379	3,634	3,996	4,145

Fall Enrollment by Gender

As of official census date

	<u>2005</u>	<u>2006</u>	<u>2007</u>	<u>2008</u>	<u>2009</u>
Undergraduate Students					
Male Full-time	924	974	1,044	1,045	1,055
Female Full-time	<u>1,044</u>	<u>1,036</u>	<u>1,066</u>	<u>1,039</u>	<u>956</u>
Total	<u>1,968</u>	<u>2,010</u>	<u>2,110</u>	<u>2,084</u>	<u>2,011</u>
Male Part-time	107	97	122	105	88
Female Part-time	<u>113</u>	<u>138</u>	<u>104</u>	<u>120</u>	<u>141</u>
Total	<u>220</u>	<u>235</u>	<u>226</u>	<u>225</u>	<u>229</u>
First-Professional Students					
Male Full-time	97	100	105	105	115
Female Full-time	<u>175</u>	<u>167</u>	<u>169</u>	<u>163</u>	<u>164</u>
Total	<u>272</u>	<u>267</u>	<u>274</u>	<u>268</u>	<u>279</u>
Male Part-time	0	0	0	0	0
Female Part-time	<u>1</u>	<u>1</u>	<u>1</u>	<u>1</u>	<u>0</u>
Total	<u>1</u>	<u>1</u>	<u>1</u>	<u>1</u>	<u>0</u>
Graduate Students					
Male Full-time	63	75	102	127	127
Female Full-time	<u>94</u>	<u>98</u>	<u>113</u>	<u>150</u>	<u>176</u>
Total	<u>157</u>	<u>173</u>	<u>215</u>	<u>277</u>	<u>303</u>
Male Part-time	596	653	728	967	993
Female Part-time	<u>1,266</u>	<u>1,438</u>	<u>1,560</u>	<u>2,079</u>	<u>2,424</u>
Total	<u>1,862</u>	<u>2,091</u>	<u>2,288</u>	<u>3,046</u>	<u>3,417</u>
Total University					
Male Full-time	1,084	1,149	1,251	1,277	1,297
Female Full-time	<u>1,313</u>	<u>1,301</u>	<u>1,348</u>	<u>1,352</u>	<u>1,296</u>
Total	<u>2,397</u>	<u>2,450</u>	<u>2,599</u>	<u>2,629</u>	<u>2,593</u>
Male Part-time	703	750	850	1,072	1,081
Female Part-time	<u>1,380</u>	<u>1,577</u>	<u>1,665</u>	<u>2,200</u>	<u>2,565</u>
Total	<u>2,083</u>	<u>2,327</u>	<u>2,515</u>	<u>3,272</u>	<u>3,646</u>

Fall Enrollment by Ethnicity

As of official census date

	<u>2005</u>	<u>2006</u>	<u>2007</u>	<u>2008</u>	<u>2009</u>
Undergraduate Students					
Full-time					
White	1,802	1,834	1,865	1,753	1,678
American Indian/Alaskan	2	4	6	4	4
Asian	46	60	55	45	43
Black	46	58	66	72	69
Hawaiian/Pacific Island.	0	0	0	0	0
Hispanic	37	37	54	52	34
Non-Resident Alien	5	17	37	54	50
Two or more races	0	0	0	0	8
Unidentified	30	0	27	104	125
Total Full-time	<u>1,968</u>	<u>2,010</u>	<u>2,110</u>	<u>2,084</u>	<u>2,011</u>
Part-time					
White	179	217	156	142	122
American Indian/Alaskan	1	1	1	0	0
Asian	3	4	3	4	2
Black	6	5	4	8	5
Hawaiian/Pacific Island.	0	0	0	0	0
Hispanic	4	2	3	1	1
Non-Resident Alien	1	1	9	4	3
Two or more races	0	0	0	0	3
Unidentified	26	5	50	66	93
Total Part-time	<u>220</u>	<u>235</u>	<u>226</u>	<u>225</u>	<u>229</u>
First-Professional Students					
Full-time					
White	254	252	258	250	260
American Indian/Alaskan	1	1	1	0	0
Asian	11	12	12	13	10
Black	3	0	0	1	1
Hawaiian/Pacific Island.	0	0	0	0	0
Hispanic	1	1	1	1	1
Non-Resident Alien	2	1	2	3	2
Two or more races	0	0	0	0	2
Unidentified	0	0	0	0	3
Total Full-time	<u>272</u>	<u>267</u>	<u>274</u>	<u>268</u>	<u>279</u>
Part-time					
White	1	1	1	1	0
American Indian/Alaskan	0	0	0	0	0
Asian	0	0	0	0	0
Black	0	0	0	0	0
Hawaiian/Pacific Island.	0	0	0	0	0
Hispanic	0	0	0	0	0
Non-Resident Alien	0	0	0	0	0
Two or more races	0	0	0	0	0
Unidentified	0	0	0	0	0
Total Part-time	<u>1</u>	<u>1</u>	<u>1</u>	<u>1</u>	<u>0</u>

(Continued on following page)

Fall Enrollment by Ethnicity (continued)

	<u>2005</u>	<u>2006</u>	<u>2007</u>	<u>2008</u>	<u>2009</u>
Graduate Students					
Full-time					
White	122	130	159	171	172
American Indian/Alaskan	0	2	2	3	0
Asian	2	4	4	3	1
Black	6	7	7	5	13
Hawaiian/Pacific Island.	0	0	0	0	0
Hispanic	1	1	1	3	4
Non-Resident Alien	26	29	31	52	66
Two or more races	0	0	0	0	0
Unidentified	0	0	11	40	47
Total Full-time	<u>157</u>	<u>173</u>	<u>215</u>	<u>277</u>	<u>303</u>
Part-time					
White	1,758	2,005	2,113	2,631	2,831
American Indian/Alaskan	1	3	2	0	2
Asian	3	5	17	14	14
Black	10	7	10	14	14
Hawaiian/Pacific Island.	0	0	0	0	1
Hispanic	14	19	20	22	25
Non-Resident Alien	5	10	18	14	15
Two or more races	0	0	0	0	6
Unidentified	71	42	108	351	509
Total Part-time	<u>1,862</u>	<u>2,091</u>	<u>2,288</u>	<u>3,046</u>	<u>3,417</u>
Total University					
Full-time					
White	2,178	2,216	2,282	2,174	2,110
American Indian/Alaskan	3	7	9	7	4
Asian	59	76	71	61	54
Black	55	65	73	78	83
Hawaiian/Pacific Island.	0	0	0	0	0
Hispanic	39	39	56	56	39
Non-Resident Alien	33	47	70	109	118
Two or more races	0	0	0	0	10
Unidentified	30	0	38	144	175
Total Full-time	<u>2,397</u>	<u>2,450</u>	<u>2,599</u>	<u>2,629</u>	<u>2,593</u>
Part-time					
White	1,938	2,223	2,270	2,774	2,953
American Indian/Alaskan	2	4	3	0	2
Asian	6	9	20	18	16
Black	16	12	14	22	19
Hawaiian/Pacific Island.	0	0	0	0	1
Hispanic	18	21	23	23	26
Non-Resident Alien	6	11	27	18	18
Two or more races	0	0	0	0	9
Unidentified	97	47	158	417	602
Total Part-time	<u>2,083</u>	<u>2,327</u>	<u>2,515</u>	<u>3,272</u>	<u>3,646</u>

Fall Enrollment Percentages

Status

	Undergraduate	First Professional	Graduate	Total
Full-time	89.8%	100.0%	8.1%	41.6%
Part-time	10.2%	0.0%	91.9%	58.4%

Ethnicity

	Undergraduate	First Professional	Graduate	Total
Full-time				
White	83.4%	93.2%	56.8%	81.4%
American Indian/Alaskan	0.2%	0.0%	0.0%	0.2%
Asian	2.1%	3.6%	0.3%	2.1%
Black	3.4%	0.4%	4.3%	3.2%
Hawaiian/Pacific Islander	0.0%	0.0%	0.0%	0.0%
Hispanic	1.7%	0.4%	1.3%	1.5%
Non-Resident Alien	2.5%	0.7%	21.8%	4.6%
Two or more races	0.4%	0.7%	0.0%	0.4%
Unidentified	6.2%	1.1%	15.5%	6.7%
Part-time				
White	53.3%	0.0%	82.9%	81.0%
American Indian/Alaskan	0.0%	0.0%	0.1%	0.1%
Asian	0.9%	0.0%	0.4%	0.4%
Black	2.2%	0.0%	0.4%	0.5%
Hawaiian/Pacific Islander	0.0%	0.0%	0.0%	0.0%
Hispanic	0.4%	0.0%	0.7%	0.7%
Non-Resident Alien	1.3%	0.0%	0.4%	0.5%
Two or more races	1.3%	0.0%	0.2%	0.2%
Unidentified	40.6%	0.0%	14.9%	16.5%
Total				
White	80.4%	93.2%	80.7%	81.2%
American Indian/Alaskan	0.2%	0.0%	0.1%	0.1%
Asian	2.0%	3.6%	0.4%	1.1%
Black	3.3%	0.4%	0.7%	1.6%
Hawaiian/Pacific Islander	0.0%	0.0%	0.0%	0.0%
Hispanic	1.6%	0.4%	0.8%	1.0%
Non-Resident Alien	2.4%	0.7%	2.2%	2.2%
Two or more races	0.5%	0.7%	0.2%	0.3%
Unidentified	9.7%	1.1%	14.9%	12.5%

Gender

	Undergraduate	First Professional	Graduate	Total
Full-time				
Male	52.5%	41.2%	41.9%	50.0%
Female	47.5%	58.8%	58.1%	50.0%
Part-time				
Male	38.4%	0.0%	29.1%	29.6%
Female	61.6%	0.0%	70.9%	70.4%
Total				
Male	51.0%	41.2%	30.1%	38.1%
Female	49.0%	58.8%	69.9%	61.9%

Fall Enrollment by Primary Major

As of official census date

Full-time Undergraduate

	Fall 2005	Fall 2006	Fall 2007	Fall 2008	Fall 2009
Department of Biology & Health Sciences	152	147	146	139	117
Biology	149	145	140	135	115
Clinical Laboratory Science	-	-	-	1	1
Medical Technology	3	2	6	3	1
Department of Chemistry	82	77	61	43	46
Biochemistry	39	35	27	16	14
Chemistry	43	42	34	27	32
Division of Business Admin. & Accounting	272	290	315	306	283
Accounting	67	76	89	82	76
Business Administration	193	193	191	192	169
e-Business	1	-	-	-	-
Entrepreneurship	11	21	35	32	38
Department of Communication Studies	97	98	108	88	85
Department of Education	142	145	124	113	109
Elementary Education	142	145	103	68	54
Pre-Elementary Education	-	-	21	45	55
Division of Engineering & Physics	134	139	172	161	167
Applied & Engineering Sciences	8	3	4	3	1
Electrical Engineering	45	40	51	53	59
Engineering	9	12	10	5	11
Engineering Management	4	4	2	3	3
Mechanical Engineering	68	80	105	97	93
Dept. of Environmental Engr. & Earth Sciences	27	40	53	64	78
Earth & Environmental Sciences	12	15	20	27	27
Environmental Engineering	15	25	33	37	51
Division of Humanities	153	142	129	144	142
English	68	65	60	70	71
Foreign Languages	10	6	7	8	6
History	72	68	60	64	62
Philosophy	3	3	2	2	3
Integrative Media	6	15	26	32	36
Department of Math & Computer Science	68	59	55	65	71
Computer Info Systems	17	10	11	13	17
Computer Science	22	24	22	23	26
Mathematics	29	25	22	29	28
Department of Nursing	183	214	282	261	211
Nursing	183	214	282	261	211
School of Pharmacy	191	184	157	161	148
Pre-Pharmacy	175	161	141	143	135
Pharmaceutical Sciences	16	23	16	18	13

(Continued on following page)

Fall Enrollment by Primary Major (continued)

Full-time Undergraduate

	Fall 2005	Fall 2006	Fall 2007	Fall 2008	Fall 2009
Division of Behavioral and Social Sciences	264	265	280	267	270
Criminology	95	96	88	90	80
International Studies	7	8	10	11	12
Political Science	29	30	37	34	43
Psychology	117	120	132	118	119
Sociology	16	11	13	14	16
Department of Visual & Performing Arts	47	37	24	25	21
Music	4	1	-	-	-
Music Education	8	4	1	1	-
Musical Theatre	15	16	11	10	6
Theatre Arts	19	15	12	14	15
Visual & Performing Arts	1	1	-	-	-
Individualized Studies	-	-	1	-	-
Undeclared	150	158	177	215	227
Total	1,968	2,010	2,110	2,084	2,011

Full-time Graduate

	Fall 2005	Fall 2006	Fall 2007	Fall 2008	Fall 2009
Division of Business Admin. & Accounting	30	30	42	52	86
Business Administration	30	30	42	52	86
Graduate Teacher Education	46	32	50	76	89
Division of Engineering & Physics	24	28	21	27	15
Electrical Engineering	24	28	20	18	9
Engineering Operations & Strategy	-	-	1	9	6
Creative Writing	34	54	73	97	94
Department of Math & Computer Science	-	1	-	-	1
Mathematics	-	1	-	-	1
Department of Nursing	23	27	28	15	14
Undeclared	-	1	1	10	4
Total	157	173	215	277	303

Full-time First-Professional

	Fall 2005	Fall 2006	Fall 2007	Fall 2008	Fall 2009
School of Pharmacy	272	267	274	268	279

(Continued on following page)

Fall Enrollment by Primary Major (continued)

Part-time Undergraduate

	Fall 2005	Fall 2006	Fall 2007	Fall 2008	Fall 2009
Department of Biology & Health Sciences	16	7	6	10	7
Biology	15	7	6	10	7
Medical Technology	1	-	-	-	-
Department of Chemistry	5	5	4	5	3
Biochemistry	4	4	2	1	-
Chemistry	1	1	2	4	3
Division of Business Admin. & Accounting	17	16	19	20	32
Accounting	3	6	5	4	3
Business Administration	14	9	14	16	28
Entrepreneurship	-	1	-	-	1
Department of Communication Studies	6	6	2	2	4
Department of Education	18	20	13	5	7
Education	18	20	13	3	5
Pre-Elementary Education	-	-	-	2	2
Division of Engineering & Physics	17	16	11	10	7
Applied & Engineering Sciences	3	3	-	-	-
Electrical Engineering	4	8	3	3	3
Engineering	-	-	1	1	-
Engineering Management	4	-	2	2	1
Mechanical Engineering	6	5	5	4	3
Dept. of Environmental Engr. & Earth Sciences	6	8	5	3	3
Earth & Environmental Sciences	2	2	1	2	1
Environmental Engineering	4	6	4	1	2
Division of Humanities	14	9	17	11	5
English	8	4	9	8	3
Foreign Languages	-	1	-	-	-
History	6	3	8	3	1
Philosophy	-	1	-	-	1
Integrative Media	-	-	1	1	2
Department of Math & Computer Science	5	5	5	6	4
Computer Info Systems	1	1	3	1	1
Computer Science	1	1	-	3	1
Mathematics	3	3	2	2	2
Department of Nursing	32	37	14	16	16
School of Pharmacy	-	1	-	2	1
Pre-Pharmacy	-	-	-	-	-
Pharmaceutical Science	-	1	-	2	1

(Continued on following page)

Fall Enrollment by Primary Major (continued)

Part-time Undergraduate

	Fall 2005	Fall 2006	Fall 2007	Fall 2008	Fall 2009
Division of Behavioral and Social Sciences	18	25	27	23	17
Criminology	3	7	7	5	4
International Studies	-	1	1	-	1
Political Science	3	2	1	-	1
Psychology	9	10	12	13	8
Sociology	3	5	6	5	3
Department of Visual & Performing Arts	1	-	1	-	-
Music	-	-	-	-	-
Music Education	1	-	1	-	-
Musical Theatre	-	-	-	-	-
Theatre Arts	-	-	-	-	-
Individualized Studies	-	-	-	-	-
Undeclared	65	80	101	111	121
Total	220	235	226	225	229

Part-time Graduate

	Fall 2005	Fall 2006	Fall 2007	Fall 2008	Fall 2009
Division of Business Admin. & Accounting	146	149	151	111	118
Business Administration	146	149	151	111	118
Graduate Teacher Education	1,406	1,588	1,795	2,332	2,849
Division of Engineering & Physics	4	13	34	27	19
Electrical Engineering	4	10	19	12	9
Engineering Operations & Strategy	-	3	15	15	10
Creative Writing	7	5	19	10	29
Department of Math & Computer Science	2	4	-	3	1
Mathematics	2	4	-	3	1
Department of Nursing	14	12	31	33	26
Undeclared	283	320	258	530	375
Total	1,862	2,091	2,288	3,046	3,417

Part-time First-Professional

	Fall 2005	Fall 2006	Fall 2007	Fall 2008	Fall 2009
School of Pharmacy	1	1	1	1	-

Fall Enrollment by Residence

Full-time Students

	<u>Fall 2008</u>		<u>Fall 2009</u>	
Residence Halls				
First-time Full-time Freshmen	418	75%	383	73%
Full-time Undergraduate Students (including First-time Freshmen)	891	43%	804	40%
First-Professional Students	<u>37</u>	14%	<u>44</u>	16%
Total	928	39%	848	37%

Off-Campus

First-time Full-time Freshmen	143	25%	144	27%
Undergraduate Students (including First-time Freshmen)	1,193	57%	1,207	60%
First-Professional Students	<u>231</u>	86%	<u>235</u>	84%
Total	1,424	61%	1,442	63%

Total Full-time

First-time Full-time Freshmen	561	527
Full-time Undergraduate Students (including First-time Freshmen)	2,084	2,011
First-Professional Students	<u>268</u>	<u>279</u>
Total	2,352	2,290

Fall Enrollment by Age Category

Fall 2009 Enrollment

	Full-time			Part-time			Total
	Undergraduate	First-Professional	Graduate	Undergraduate	First-Professional	Graduate	
Under 18	2	0	0	64	0	0	66
18 - 19	836	1	0	36	0	0	873
20 - 21	796	110	3	19	0	1	929
22 - 24	294	152	106	39	0	284	875
25 - 29	64	12	83	26	0	1,238	1,423
30 - 34	10	3	33	14	0	591	651
35 - 39	3	1	29	5	0	426	464
40 - 49	6	0	26	17	0	575	624
50 - 64	0	0	22	8	0	299	329
65 & Over	0	0	1	1	0	2	4
Age unknown	0	0	0	0	0	1	1
Total	2,011	279	303	229	0	3,417	6,239

Fall Enrollment by State of Origin

Fall 2009 Enrollment							
Full-time				Part-time			
	Undergraduate	First- Professional	Graduate	Undergraduate	First- Professional	Graduate	Total
Alabama	1						1
Alaska			1				1
Arizona			1			1	2
Arkansas						2	2
California	3	2	4			8	17
Colorado			2				2
Connecticut	14					3	17
Delaware	5	2				2	9
Florida	5		5			2	12
Georgia			1			1	2
Hawaii						1	1
Illinois	2		1			11	14
Indiana			1			1	2
Iowa			1			2	3
Maine	6					1	7
Maryland	17	1	1	1		10	30
Massachusetts			2			1	3
Michigan			2			4	6
Missouri			1			2	3
Montana						1	1
New Hampshire	2					3	5
New Jersey	218	17	10	8		24	277
New York	127	19	11	3		15	175
North Carolina			3			2	5
Ohio	4	2				11	17
Oregon			1			2	3
Pennsylvania	1,554	231	175	214		3,251	5,425
Puerto Rico	1					1	2
Rhode Island							
South Carolina			1			3	4
South Dakota						1	1
Tennessee						3	3
Texas						9	9
Vermont		1					1
Virginia	1	1	7			7	16
Washington			1			4	5
West Virginia			1				1
Wisconsin		1	2			2	5
Wyoming						1	1
Canada			1			9	10
Foreign Country	51*	2	67	3		16	139
Total	2,011	279	303	229	0	3,417	6,239
In State	77.3%	82.8%	57.8%	93.4%		95.1%	87.0%
Out of State	20.2%	16.5%	19.8%	5.2%		4.1%	10.7%
Foreign	2.5%	0.7%	22.4%	1.3%		0.7%	2.4%

*One American citizen living abroad in Switzerland

International Students

Fall 2009 Enrollment By Country of Origin

	Undergraduate			First-Professional			Graduate			Total		
	Non-Resident Alien	Internat.	Total	Non-Resident Alien	Internat.	Total	Non-Resident Alien	Internat.	Total	Non-Resident Alien	Internat.	Total
Bahamas								1	1		1	1
Bangladesh				1		1				1		1
Benin	1		1							1		1
Cameroon							1		1	1		1
Canada								10	10		10	10
China	6		6				7		7	13		13
Greece	1		1							1		1
Hungary							1		1	1		1
India	4		4				52		52	56		56
Jordan							1		1	1		1
Nepal	1		1				1		1	2		2
Rwanda	5		5							5		5
Saudi Arabia	32		32	1		1	17		17	50		50
Switzerland		1	1								1	1
Thailand							1		1	1		1
United Kingdom	1		1					1	1	1	1	2
Venezuela	1		1							1		1
Vietnam	1		1							1		1
Total	53	1	54	2		2	81	12	93	136	13	149

First Generation College Students from Entering Freshman Class*

2005 Cohort	2006 Cohort	2007 Cohort	2008 Cohort	2009 Cohort
35.4%	31.4%	29.4%	29.4%	29.7%
201 students	160 students	173 students	153 students	148 students

*A first generation student is defined as a student whose parents have never enrolled in college. The data is from responses to the CIRP Freshman Survey administered to incoming freshmen at Orientation.

Programs Offered

Undergraduate

BA	Biochemistry	BBA	Business Administration
BA	Biology	BBA	Entrepreneurship
BA	Chemistry	BS	Applied & Engineering Sciences
BA	Communication Studies	BS	Accounting
BA	Computer Science	BS	Biochemistry
BA	Criminology	BS	Biology
BA	Earth & Environmental Sciences	BS	Chemistry
BA	Elementary Education	BS	Computer Information Systems
BA	English	BS	Computer Science
BA	History	BS	Earth & Environmental Sciences
BA	Individualized Studies	BS	Electrical Engineering
BA	Integrative Media	BS	Engineering Management
BA	International Studies	BS	Environmental Engineering
BA	Mathematics	BS	Individualized Studies
BA	Musical Theatre	BS	Mathematics
BA	Philosophy	BS	Mechanical Engineering
BA	Political Science	BS	Medical Technology
BA	Psychology	BS	Nursing
BA	Sociology	BS	Pharmaceutical Sciences
BA	Spanish		
BA	Theatre Arts		

Graduate

MA	Creative Writing
MBA	Business Administration
MFA	Creative Writing
MS	Education
MS	Electrical Engineering
MS	Engineering Operations & Strategy
MS	Mathematics
MS	Nursing

First- Professional

DPH	Pharmacy
-----	----------

Doctoral

EDD	Educational Leadership
-----	------------------------

Source: Registrar

Degrees Granted by Department and Major

Undergraduate

Department	2004-05	2005-06	2006-07	2007-08	2008-09
Department of Biology & Health Sciences	31	32	36	25	44
Biology	31	32	36	25	43
Medical Technology	-	-	-	-	1
Department of Chemistry	4	6	3	12	7
Biochemistry	3	4	1	6	5
Chemistry	1	2	2	6	2
Division of Business Administration & Accounting	65	57	65	95	72
Accounting	17	15	20	24	23
Business Administration	48	41	44	59	47
e-Business	-	1	-	-	-
Entrepreneurship	-	-	1	12	2
Department of Communication Studies	27	29	24	32	27
Integrative Media	-	-	1	2	6
Department of Education	38	30	41	32	18
Division of Engineering & Physics	31	24	23	30	40
Applied & Engineering Sciences	1	3	4	1	-
Electrical Engineering	12	6	8	11	10
Engineering Management	-	-	1	-	-
Mechanical Engineering	18	15	10	18	30
Physics	-	-	-	-	-
Department of Environmental Engineering & Earth Sciences	11	11	5	5	17
Earth & Environmental Sciences	4	7	1	1	9
Environmental Engineering	7	4	4	4	8
Division of Humanities	35	39	36	42	36
English	19	14	23	14	11
History	15	18	12	22	18
Philosophy	-	-	-	2	-
Spanish	1	7	1	4	7
Department of Math & Computer Science	18	20	13	11	16
Computer Information Systems	5	10	2	3	-
Computer Science	7	2	5	6	8
Mathematics	6	8	6	2	8
Department of Pharmaceutical Sciences	-	-	1	1	-
Department of Nursing	17	39	43	43	53
Division of Behavioral and Social Sciences	60	61	61	80	73
Criminology	15	13	18	20	22
Economics	-	-	-	-	-
International Studies	-	3	-	1	1
Political Science	5	7	5	11	3
Psychology	35	31	34	42	42
Sociology	5	7	4	6	5

(Continued on following page)

Degrees Granted by Department and Major (continued)

Undergraduate

Department	2004-05	2005-06	2006-07	2007-08	2008-09
Department of Visual & Performing Arts	10	11	13	10	6
Art	-	-	-	-	-
Music	2	-	1	-	-
Music Education	1	1	2	2	-
Musical Theatre	3	1	4	3	4
Theatre Arts	4	9	6	5	2
Unspecified	57	63	50	64	76
Individualized Studies	1	1	-	1	-
Total	405	423	415	485	491

Graduate

Department	2004-05	2005-06	2006-07	2007-08	2008-09
Division of Business Administration & Accounting	53	48	52	61	59
Business Administration	52	48	52	61	59
Health Care Admin	1	-	-	-	-
Creative Writing	-	-	31	27	27
Graduate Teacher Education	761	754	823	861	947
Division of Engineering & Physics	3	12	6	18	26
Electrical Engineering	3	12	6	18	16
Engineering Operations & Strategy	-	-	-	-	10
Department of Math & Computer Science	-	-	-	-	2
Mathematics	-	-	-	-	2
Department of Nursing	18	15	21	19	18
Total	835	829	933	986	1079

First-Professional

Department	2004-05	2005-06	2006-07	2007-08	2008-09
Pharmacy	69	73	63	71	61

Admissions

Full-time Undergraduate Students

	<u>Fall 2005</u>	<u>Fall 2006</u>	<u>Fall 2007</u>	<u>Fall 2008</u>	<u>Fall 2009</u>
Applied	3,209	3,400	3,066	3,176	3,038
Freshman	2,702	2,988	2,668	2,778	2,641
Transfer	507	412	398	398	397
Offered Admission	2,355	2,421	2,346	2,338	2,259
Freshman	2,084	2,181	2,102	2,091	1,995
Transfer	271	240	244	247	264
Offer Rate	73.4%	71.2%	76.5%	73.6%	74.4%
Freshman	77.1%	73.0%	78.8%	75.3%	75.5%
Transfer	53.5%	58.3%	61.3%	62.1%	66.5%
Enrolled*	720	707	740	698	652
Freshman	583	588	627	578	535
Transfer	137	119	113	120	117
Yield Rate	30.6%	29.2%	31.5%	29.9%	28.9%
Freshman	28.0%	27.0%	29.8%	27.6%	26.8%
Transfer	50.6%	49.6%	46.3%	48.6%	44.3%

**As of the beginning of the Fall semester*

Average SAT Scores for First-time Full-time Freshmen

Wilkes Freshmen	<u>Fall 2005</u>	<u>Fall 2006</u>	<u>Fall 2007</u>	<u>Fall 2008</u>	<u>Fall 2009</u>
Verbal	531	518	513	515	520
Math	543	539	532	530	539
Writing	-	-	-	507	514
Total Math & Verbal	1074	1057	1045	1045	1059
National Average					
Verbal	508	503	502	502	501
Math	520	518	515	515	515
Writing	-	-	-	494	493
Total Math & Verbal	1028	1021	1017	1017	1016

Undergraduate Retention of First-time Full-time Freshmen

		Retention Rates							
Entering Fall Term*		1st Fall	2nd Fall	3rd Fall	4th Fall	5th Fall	6th Fall	7th Fall	8th Fall
1998	N	375	267	224	203	52	11	2	1
	%		71.2%	59.7%	54.1%	13.9%	2.9%	0.5%	0.3%
1999	N	377	274	233	230	56	12	2	0
	%		72.7%	61.8%	61.0%	14.9%	3.2%	0.5%	0.0%
2000	N	460	343	299	287	77	15	5	3
	%		74.6%	65.0%	62.4%	16.7%	3.3%	1.1%	0.7%
2001	N	407	317	277	267	65	7	2	1
	%		77.9%	68.1%	65.6%	16.0%	1.7%	0.5%	0.2%
2002	N	471	370	313	296	69	22	6	1
	%		78.6%	66.5%	62.8%	14.6%	4.7%	1.3%	0.2%
2003	N	510	407	362	336	78	16	2	
	%		79.8%	71.0%	65.9%	15.3%	3.1%	0.4%	
2004	N	551	443	390	371	70	9		
	%		80.4%	70.8%	67.3%	12.7%	1.6%		
2005	N	566	417	366	348	62			
	%		73.7%	64.7%	61.5%	11.0%			
2006	N	571	453	387	354				
	%		79.3%	67.8%	62.0%				
2007	N	620	483	408					
	%		77.9%	65.8%					
2008	N	561	447						
	%		79.7%						
2009	N	527							

** As of official census date*

Note: Includes retention of students who enter the School of Pharmacy.

Graduation Rates for First-time Full-time Freshmen

			Graduation Rates				
Entering Fall Term*		1st Fall	within 4 yrs	within 5 yrs	within 6 yrs	within 7 yrs	within 8 yrs
1996	N	448	154	233	240	242	242
	%		34.4%	52.0%	53.6%	54.0%	54.0%
1997	N	355	162	209	215	217	217
	%		45.6%	58.9%	60.6%	61.1%	61.1%
1998	N	375	148	187	200	201	201
	%		39.5%	49.9%	53.3%	53.6%	53.6%
1999	N	377	166	209	221	223	223
	%		44.0%	55.4%	58.6%	59.2%	59.2%
2000	N	460	194	251	259	264	265
	%		42.2%	54.6%	56.3%	57.4%	57.6%
2001	N	406 **	198	252	255	256	257
	%		48.8%	62.1%	62.8%	63.1%	63.3%
2002	N	471	224	266	272	277	
	%		47.6%	56.5%	57.7%	58.8%	
2003	N	509 **	254	310	320		
	%		49.9%	60.9%	62.9%		
2004	N	550 **	288	349			
	%		52.4%	63.5%			
2005	N	565 **	270				
	%		47.8%				

**As of official census date*

***Cohort adjusted in accordance with IPEDS regulations*

Student Credit Hours by Department and Subject

Undergraduate	2004-05	2005-06	2006-07	2007-08	2008-09
Department of Aerospace Studies	139	80	87	96	141
Aerospace Studies	139	80	87	96	141
Department of Biology & Health Sciences	4,020	4,004	4,002	4,179	4,067
Biology	4,014	3,998	3,996	4,176	4,064
Marine Science	6	6	6	3	3
Department of Chemistry	3,446	3,566	3,563	3,263	3,209
Chemistry	3,446	3,566	3,563	3,263	3,209
Division of Business Administration & Accounting	5,712	6,948	7,058	7,506	6,813
Accelerated Business Administration	-	-	-	-	80
Accounting	1,257	1,347	1,407	1,539	1,359
Business Administration	4,236	5,089	4,839	4,780	4,383
Entrepreneurship	92	231	378	556	464
Personal & Professional Development	127	281	434	631	527
Department of Communication Studies	3,376	3,295	3,188	3,251	3,274
Communications	3,376	3,295	3,188	3,251	3,274
Department of Education	3,994	3,221	3,094	2,666	2,451
Education	3,727	3,035	2,974	2,498	2,214
Special Education	267	186	120	168	237
Division of Engineering & Physics	3,765	3,986	4,268	4,836	4,533
Electrical Engineering	614	635	703	704	777
Engineering	507	599	567	778	706
Engineering Management	134	96	156	119	111
Mechanical Engineering	1,039	1,050	1,197	1,292	1,272
Physics	1,471	1,606	1,645	1,943	1,667
Dept. of Environmental Engr. & Earth Sciences	1,284	1,393	1,497	1,515	1,805
Earth & Environmental Sciences	1,003	1,161	1,248	1,236	1,393
Environmental Engineering	281	232	249	279	412
Division of Humanities	9,826	9,731	9,922	10,340	10,473
English	5,101	5,039	5,138	5,199	5,092
French	153	144	144	177	135
Spanish	900	1,005	1,008	1,144	1,338
History	2,550	2,577	2,673	2,950	3,102
Philosophy	1,122	966	959	870	806
Integrative Media	-	66	202	306	366
Interdisciplinary	2,110	2,346	2,275	2,515	2,465
Freshman Foundations	1,728	1,812	1,767	1,929	1,773
Cooperative Education	192	243	259	251	244
Career Planning	123	138	153	170	244
Study Travel Experience	3	36	3	60	39
Women's Studies	64	117	93	105	165
Department of Math & Computer Science	6,468	6,362	6,145	6,722	6,369
Computer Science	2,323	2,180	1,886	2,289	2,086
Mathematics	4,145	4,182	4,259	4,433	4,283

(Continued on following page)

Student Credit Hours by Department & Subject (continued)

Undergraduate	2004-05	2005-06	2006-07	2007-08	2008-09
Department of Nursing	2,005	2,882	3,431	3,951	3,690
School of Pharmacy	4,493	4,763	4,862	4,930	5,011
Pharmacy	4,493	4,715	4,780	4,856	4,927
Pharmaceutical Sciences	-	48	82	74	84
Division of Behavioral & Social Sciences	9,248	9,830	10,194	10,897	10,216
Anthropology	600	600	702	861	864
Economics	1,036	1,038	1,014	1,068	1,030
International Studies	-	-	-	-	6
Political Science	1,227	1,390	1,557	1,708	1,454
Psychology	3,844	4,316	4,255	4,484	4,304
Sociology	2,541	2,486	2,666	2,776	2,558
Department of Visual & Performing Arts	3,851	3,761	3,867	3,866.5	4,117
Art	865	927	1,017	1,179	1,423
Dance	792	804	793	822	944
Music	1,236.5	1,190.5	1,168	1,061.5	958
Music Education	30.5	21.5	14	5	-
Theatre Arts	927	818	875	799	792
Total	63,737	66,234	67,655	70,839.5	69,000

Graduate	2004-05	2005-06	2006-07	2007-08	2008-09
Department of Biology & Health Sciences	38	18	31	9	20
Department of Chemistry	15	21	12	15	30
Division of Business Administration & Accounting	2,307	2,529	2,619	2,904	3,339
Graduate Teacher Education	29,829	30,183	34,459	40,188	46,173
Education	29,265	29,637	33,070	34,065	37,062
Special Education	564	546	390	468	411
Educational Advanced Methods	-	-	741	5,175	6,723
Education - Instructional Media	-	-	-	-	1,455
English as a Second Language	-	-	-	-	51
School Business Leadership	-	-	258	480	471
Division of Engineering & Physics	317	473	555	661	568
Electrical Engineering	314	443	447	466	353
Engineering Operations & Strategy	-	21	90	189	206
Physics	3	9	18	6	9
Creative Writing	210	794	1,016	1,555	1,879
Division of Humanities	81	78	84	54	87
English	45	54	57	30	48
History	36	24	27	24	39
Dept. of Environmental Engr. and Earth Sciences	-	-	2	14	3
Earth & Environmental Sciences	-	-	2	14	3
Department of Math & Computer Science	45	102	108	32	86
Computer Science	6	9	-	12	18
Mathematics	39	93	108	20	68
Department of Nursing	707	964	1,223	1,202	878
School of Pharmacy	4,691	4,625	4,493	4,581	4,356
Total	38,240	39,787	44,602	51,215	57,419

Student Clubs

The Student Development Office enhances student life by offering leadership programs, experiential education opportunities, and a variety of extracurricular and social activities for students. A few of the programs offered include the Cultural Series and Experiential Adventure Series, which both provide meaningful out of the classroom learning experiences. The Cultural Series introduces students to the world of art and performance by providing several opportunities each semester to experience visual art, music, theater and dance both locally and in larger Metropolitan areas such as New York City, Philadelphia and Washington D.C. The Experiential Adventure program is an alternative learning experience designed to challenge students to engage in physically demanding activities that emphasize wellness and provide practical leadership tools and lessons on teamwork. Students will have the opportunity to sign up for adventures such as white water rafting, skydiving, hiking and mountain biking.

The Student Development Office also coordinates a weekend entertainment series, which gives students a variety of entertainment options to choose from each weekend. A few of the weekly attractions include free ice-skating and bowling, discounted movie and ski passes and free admittance to local performances at the Little Theater of Wilkes-Barre. In addition, Student Development also coordinates periodic day trips to professional sporting events and theme parks. Several of the University's clubs are listed below.

Air Force ROTC	Green Club	Rock Climbing Club
Air & Waste Mgt. Assn.	History Club	Rowing Club
Alternative Spring Break	IEEE Club	Running Club
Amnicola	Indian Cultural Association	SAVE Club
Anime Club	Inter-Resident Hall Council	SIFE (Students In Free Enterprise)
ASME	Islamic Interest Society	Ski Club
BACCHUS	Lacrosse Club	Society for the Advancement SAM
The Beacon	Marketing Club	Society of Automotive Engineers
Biology Club	MANUSCRIPT	Society of Women Engineers
Cheerleading	Math Club	Sociology Club
Chemistry Club	MBA Student Association	Spanish Club
Choral Club	MENC Music Club	Step Club
Christian Fellowship Club	Multicultural Student Coalition	Strategic Gaming Club
Circle K International	Nursing Student Organization	Student Alumni Association
Climbing Club	Off-Campus Council	Student Health Advisory
College Democrats Club	PA Pharmacists Association	Student Political Action Forum
Comic Book Club	Paintball Club	Students for Envir. Sustainability
Communications Club	Pep Band	Television Club
Commuter Council	Personal Finance Club	Ultimate Frisbee
Cycling Club	Pre-Law Club	Wilkes in the World
Dance Team	Pre-Pharmacy Club	Wise Up
Debate Society	Pre-Professional Health Club	
Delta Epsilon Chi	Programming Board	
Earth and Envir. Sciences Club	PSEA Education Club	
Environmental Club	Psychology Club	
Equestrian Club	Public Affairs Club	
Fencing Club	Racquetball Club	
Free Spirit Club	Robotics Club	

Leadership Institute

The Student Affairs Leadership Institute, which functions as the coordinating body for all Student Affairs leadership programs, provides continuous opportunities to enhance the leadership skills of students and members of the community. By offering a variety of leadership programs that promote self-awareness, problem solving, service learning and multicultural issues, the Institute empowers students to explore their own personal leadership style. A few of the programs and services offered by the Institute include the Emerging Leaders Program, a Leadership Certificate Program, Intercollegiate Leadership Wilkes-Barre, National Society of Leadership & Success Speaker Series, Sigma Alpha Pi Honor Society, Leadership Assessments and a Step-Up Rock Wall and Ropes courses.

The Leadership Development Center, which is one of the elements of the Institute, is located on the first floor of the Henry Student Center. The center contains a leadership library and provides space for small group activities and leadership training.

Source: Student Affairs

University College Programs and Services

ACT 101 Program	A program funded by the Pennsylvania Department of Education to provide academic support and guidance for eligible students.
Advising Services	University College coordinates services for faculty and students to support the advising process. This includes services for “deciding” students and for those who intend to apply for entrance into the Pharmacy major.
Career Services	The Office of Career Services offers comprehensive career education and support for professional career development for the Wilkes community.
Disability Services	The University College Learning Center (UCLC) coordinates the University's policies and support programs for students with disabilities.
First Year Program	A program for first-year students who may benefit from a guided transition to college studies.
Learning Skills Program	The UCLC offers workshops and presentations designed to support student success.
Supplemental Instruction	Supplemental instruction is available for a number of courses for which review sessions have been deemed particularly beneficial.
Tutorial Services	The UCLC offers free assistance to all students enrolled at Wilkes. Tutoring is available in most courses at the introductory-level and in other courses as resources permit.
Upward Bound Program	This federally-funded program offers a comprehensive educational experience for financially-eligible high school students who are first-generation college-bound students.

Source: University College

Community Service

A liberal arts education teaches students to look at the world as a whole, to begin making connections between things like interpersonal conflict and international relations, between education and poverty, between thinking about themselves to thinking about “me in the world.” The Community Service Office coordinates projects that bridge service and study. Many academic departments offer service-learning courses that integrate classroom theory and hands-on experience with a pressing social issue. Students explore issues of hunger and homelessness, at-risk youth, access to health care, environmental sustainability, and countless other topics. The students of Wilkes partner with numerous organizations including Habitat for Humanity, the American Red Cross, the Commission on Economic Opportunity (CEO), REACH Inc., United Way, and the McGlynn Learning Center.

Students extend Wilkes’ spirit of service beyond local borders by volunteering during Alternative Fall Break in Philadelphia in the fall, and traveling domestically and internationally to serve during Spring Break. Most recently, Wilkes traveled to St. Bernard’s Parish, Louisiana to aid in Hurricane Katrina recovery efforts and Monte Christi, Dominican Republic to teach English as a second language in the public school system. In spring 2010 students will travel to Tennessee to work with the Cherokee Nation, Dominican Republic to teach English as a second language, and to Costa Rica to work on a fair trade coffee co-op. The Costa Rica trip is a new Service-Learning cross departmental program coordinated between the Community Service Office and Political Science. In extraordinary ways, Wilkes students are leading, mentoring, learning, and changing the world through service.

Source: Community Service

Career Placement of 2008 Graduates

Employed Full-time	67%
Graduate/Professional School, Full-time	28%
Part-time Graduate School	1%
Part-time Work	1%
Military Career	1%
Seeking Employment	1%
Not Employed by Choice or Pursuing Further Education	1%

Source: Career Services

Athletics

Wilkes sponsors an active intramural sports program as well as intercollegiate competition in 16 varsity sports. Varsity teams compete at the Division III level. The University is a member of the National Collegiate Athletic Association (NCAA), the Middle Atlantic States Collegiate Athletic Conference, Middle Atlantic Conference (MAC), the Freedom Conference, and the Eastern Collegiate Athletic Conference (ECAC). There were 355 student athletes on the roster for the 2008-09 season.

Varsity Programs

Men

Baseball
Basketball
Cross-Country
Football
Golf
Soccer
Tennis
Wrestling

Women

Basketball
Field Hockey
Cross-Country
Lacrosse
Soccer
Softball
Tennis
Volleyball

Athletic Department Statistics 2008-09

	<u>Wins</u>	<u>Losses</u>	<u>Ties</u>
Baseball	29	12	
Men's Basketball	15	11	
Women's Basketball	11	14	
Field Hockey	18	4	
Football	4	6	
Lacrosse	9	8	
Men's Soccer	11	8	3
Women's Soccer	10	10	1
Softball	18	21	
Men's Tennis	16	1	
Women's Tennis	17	0	
Volleyball	12	20	
Wrestling	17	6	2
Golf	Invitationals: 14 th of 20 teams, 3 rd of 18 teams		
	Tri Meet: 3 rd of 3 teams, 2 nd of 3 teams		
	Dual Meet: 1 st of 2 teams		
	Freedom Conference: 4 th of 6 teams		

Athletic Conference Participation

Freedom Conference Playoff Champions

Men's Tennis, Women's Tennis

Freedom Conference Playoff Appearances

Baseball, Men's Basketball, Men's Soccer, Field Hockey, Women's Soccer, Volleyball

NCAA Championship Appearances

Men's Tennis, Women's Tennis, Wrestling

Metro Conference Playoff Appearance

Wrestling

Source: Athletics

FACULTY and STAFF

Staff by Category and Gender

Fall 2009							Fall 2008
	Admin.	Clerical	Maint./ Custodial	Security	Coach	Total	Total
Full-time Staff							
Male	78	1	33	8	7	127	120
Female	119	50	13	4	3	189	190
Total	197	51	46	12	10	316	310
Part-time Staff							
Male	17	0	2	10	7	36	38
Female	23	4	0	0	3	30	26
Total	40	4	2	10	10	66	64
Total Staff							
Male	95	1	35	18	14	163	158
Female	142	54	13	4	6	219	216
Total	237	55	48	22	20	382	374

Faculty by Gender and Tenure Status

Full-time Faculty	Fall 2009			Fall 2008
	Male	Female	Total	Total
Professors	25	5	30	31
Associate Professors	24	24	48	43
Assistant Professors*	23	34	57	62
Instructors**	1	1	2	2
Visiting***	6	6	12	9
Total Full-time Faculty	79	70	149	147

* Includes two $\frac{3}{4}$ Asst. Prof. and two $\frac{1}{2}$ Asst. Prof.

** Includes one $\frac{3}{4}$ Instructor

***Includes two $\frac{3}{4}$ Visiting Instructors, three Visiting Instructors, six Visiting Asst. Prof. and one Visiting Assoc. Prof.

	Fall 2009			Fall 2008
	Male	Female	Total	Total
Tenured				
Professor	25	5	30	31
Associate Professor	24	24	48	43
Assistant Professor	1	0	1	1
Total Tenured	50	29	79	75
Tenure Track				
Professor	0	0	0	0
Associate Professor	0	0	0	0
Assistant Professor	21	30	51	58
Total Tenure Track	21	30	51	58
Not on Tenure Track				
Assistant Professor	1	0	1	0
Assistant Professor $\frac{3}{4}$ - time	0	2	2	1
Assistant Professor $\frac{1}{2}$ - time	0	2	2	2
Instructor	0	1	1	1
Instructor $\frac{3}{4}$ -time	1	0	1	1
Total Not on Tenure Track	2	5	7	5
Visiting				
Associate Professor	1	0	1	0
Assistant Professor	3	3	6	4
Assistant Professor $\frac{3}{4}$ - time	0	0	0	1
Instructor	1	2	3	2
Instructor $\frac{3}{4}$ - time	1	1	2	2
Total Visiting	6	6	12	9
Total Full-time Faculty	79	70	149	147

Part-time Faculty	Fall 2009			Fall 2008
	Male	Female	Total	Total
Not on Tenure Track				
Undergraduate	52	35	87	98
Graduate	108	101	209	175
ESL	0	4	4	5
Music Conservatory	3	2	5	5
Total Part-time Faculty	163	142	305	283

Full-time Faculty by Department

Department	Prof.	Assoc. Prof.	Asst. Prof.	Instr.	Visiting	Total	Tenured	On Tenure Track
Biology & Health Sciences	3	3	3	0	0	9	6	3
Behavioral & Social Sciences+	4	4	5	0	1	14	8	5
Business Division	4	2	8	0	0	14	6	8
Chemistry	0	5	2	0	0	7	5	2
Communication Studies*****	2	1	1	0	2	6	3	1
Education****	0	2	3	0	1	6	2	2
Engineering & Physics*****	7	0	1	1	2	11	8	0
Environmental Engr. & Earth Sci.++	3	3	0	0	1	7	6	0
Graduate Teacher Education	0	2	2	0	0	4	2	2
Humanities**	1	8	5	0	3	17	9	5
Math & Computer Science***	3	5	1	0	2	11	8	1
Nursing	0	4	10	0	0	14	4	9
Pharmacy*	3	6	14	1	0	24	9	11
Visual & Performing Arts	0	3	2	0	0	5	3	2
Total	30	48	57	2	12	149	79	51

* Includes two ½- time Asst. Prof. and one ¼ Asst. Prof.

** Includes one Visiting Asst. Prof., one Visiting Instructor and one ¾ Visiting Instructor

*** Includes two Visiting Asst. Prof.

**** Includes one ¾ Asst. Prof. and one ¾ Visiting Instructor

***** Includes two Visiting Instructors

***** Includes one ¾ Instructor and two Visiting Asst. Prof.

+ Includes one Visiting Asst. Prof.

++ Includes one Visiting Assoc. Prof.

Full-time Faculty Degrees

Full-time Faculty with Doctorates	Male		Female		Total	
	N	%	N	%	N	%
Professors	25	100%	5	100%	30	100%
Associate Professors	22	92%	22	92%	44	92%
Assistant Professors	21	91%	24	71%	45	79%
Instructors	0	0%	1	100%	1	50%
Visiting	5	83%	3	50%	8	67%
Total	73	92%	55	79%	128	86%

Full-time Faculty with Terminal Degrees*	Male		Female		Total	
	N	%	N	%	N	%
Professors	25	100%	5	100%	30	100%
Associate Professors	23	96%	24	100%	47	98%
Assistant Professors	21	91%	25	74%	46	81%
Instructors	0	0%	1	100%	1	50%
Visiting	5	83%	3	50%	8	67%
Total	74	94%	58	83%	132	89%

*Terminal degrees are Master of Business Administration/CPA and Master of Fine Arts.

Faculty and Staff by Ethnicity

Faculty	Full-time		Part-Time	
White	127	85.2%	283	92.8%
American Indian/Alaskan	1	0.7%	2	0.7%
Asian	7	4.7%	3	1.0%
Black	2	1.3%	1	0.3%
Hawaiian/Pacific Isl.	0	0.0%	0	0.0%
Hispanic	2	1.3%	2	0.7%
Non-Resident Alien	6	4.0%	0	0.0%
Two or more races	0	0.0%	1	0.3%
Unspecified	4	2.7%	13	4.3%
Total Faculty	149		305	

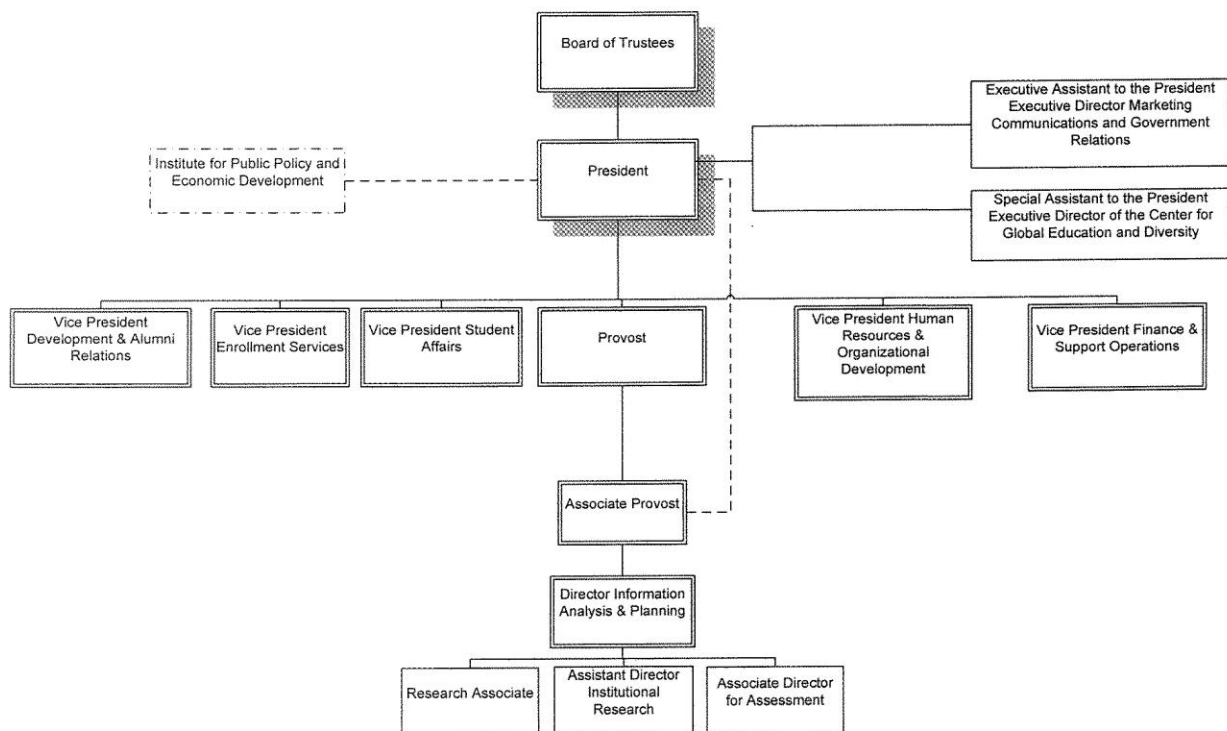
Staff	Full-time		Part-Time	
White	293	92.7%	58	87.9%
American Indian/Alaskan	2	0.6%	0	0.0%
Asian	3	0.9%	2	3.0%
Black	7	2.2%	2	3.0%
Hawaiian/Pacific Isl.	0	0.0%	0	0.0%
Hispanic	4	1.3%	0	0.0%
Non-Resident Alien	0	0.0%	0	0.0%
Two or more races	1	0.3%	0	0.0%
Unspecified	6	1.9%	4	6.1%
Total Staff	316		66	

Total University	Full-time		Part-Time	
White	420	90.3%	341	91.9%
American Indian/Alaskan	3	0.6%	2	0.5%
Asian	10	2.2%	5	1.3%
Black	9	1.9%	3	0.8%
Hawaiian/Pacific Isl.	0	0.0%	0	0.0%
Hispanic	6	1.3%	2	0.5%
Non-Resident Alien	6	1.3%	0	0.0%
Two or more races	1	0.2%	1	0.3%
Unspecified	10	2.2%	17	4.6%
Total University	465		371	

ORGANIZATIONAL CHARTS

Administrative

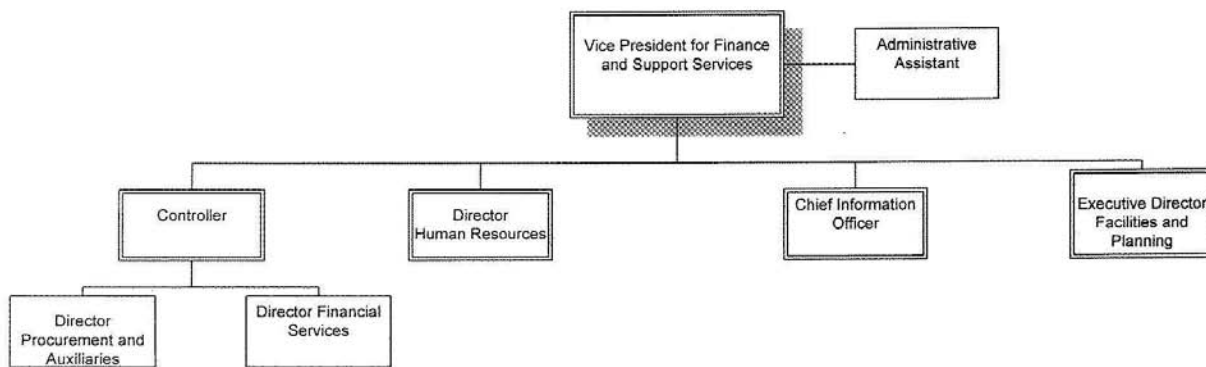
Wilkes University Administrative Organization



September 2009

Finance and Support Operations

Wilkes University Finance and Support Operations

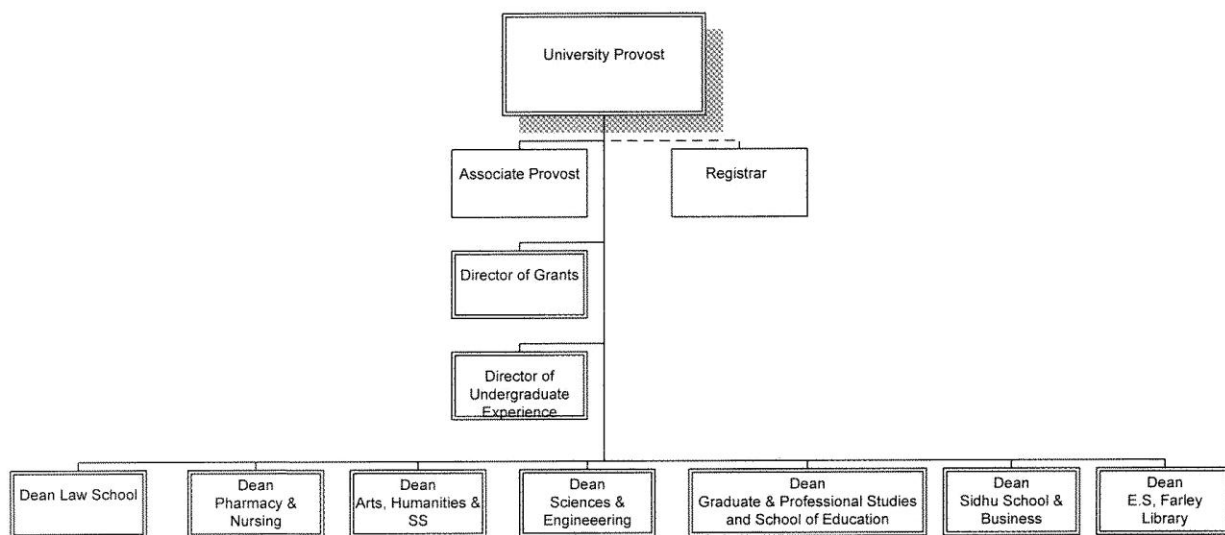


September 2009

Academic Affairs

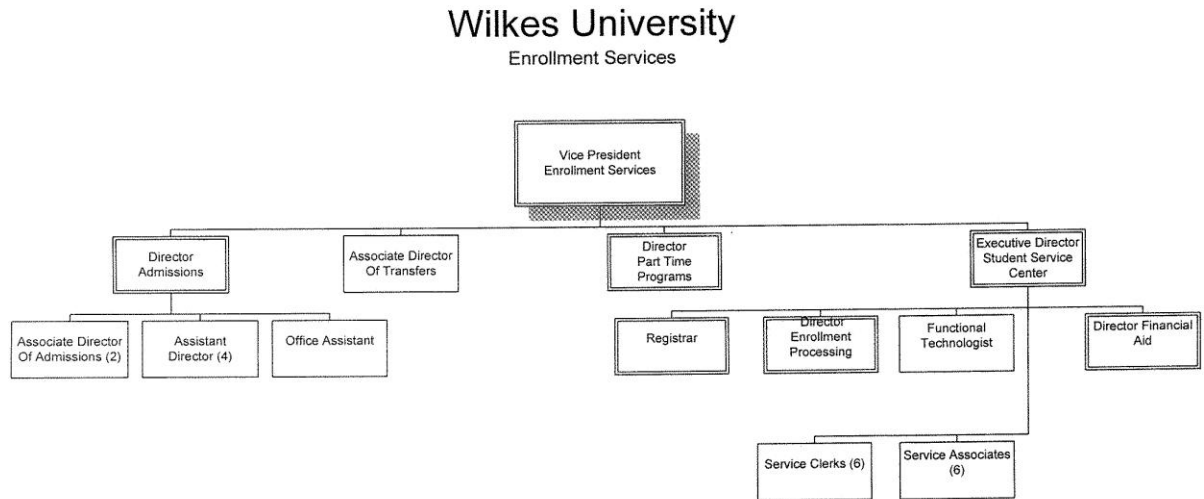
Wilkes University

Provost



September 2009

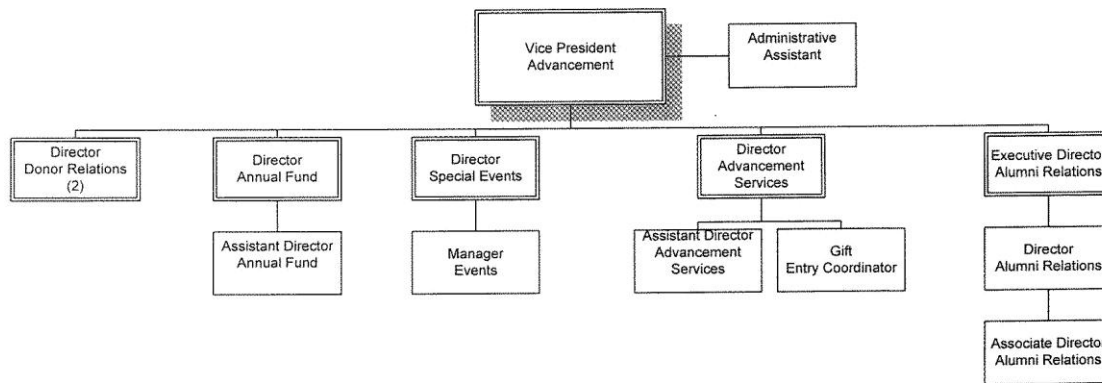
Enrollment Services



September 2009

Advancement

Wilkes University Advancement

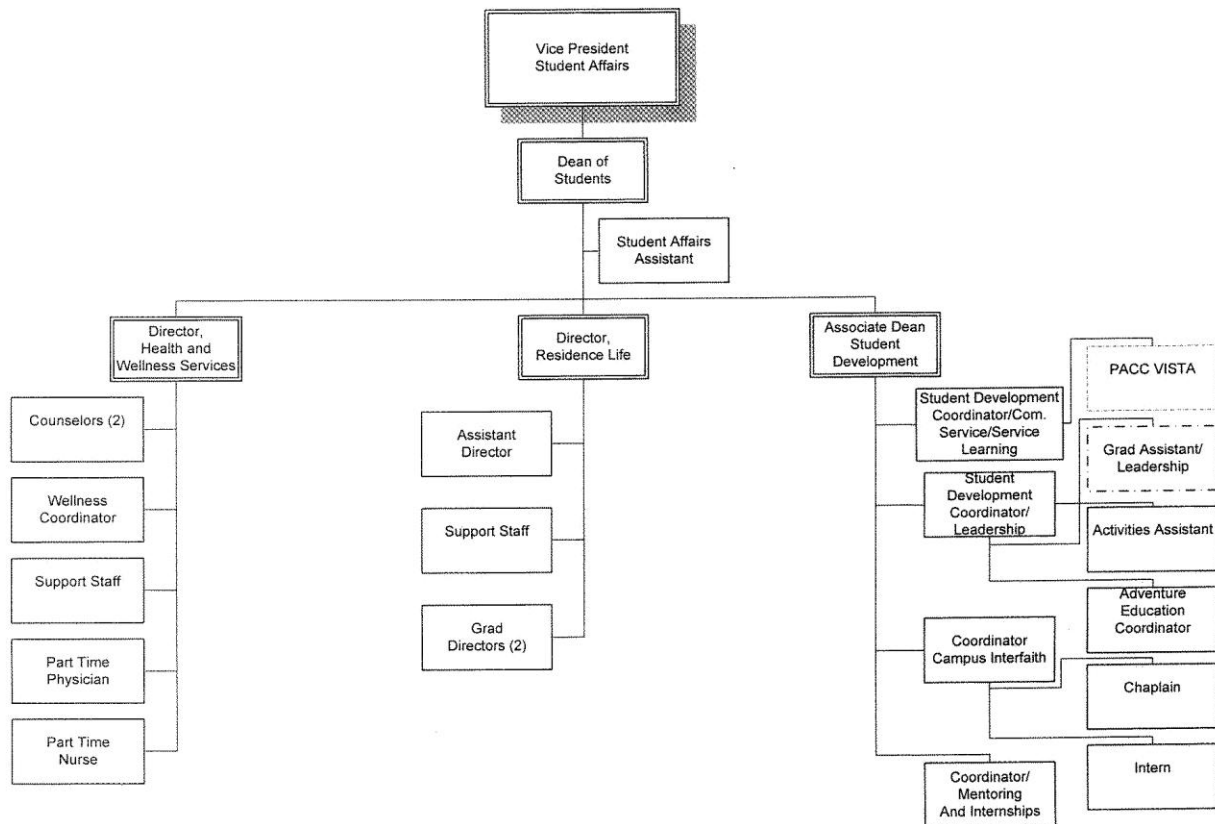


September 2009

Student Affairs

Wilkes University

Student Development/Health and Wellness/Residence Life

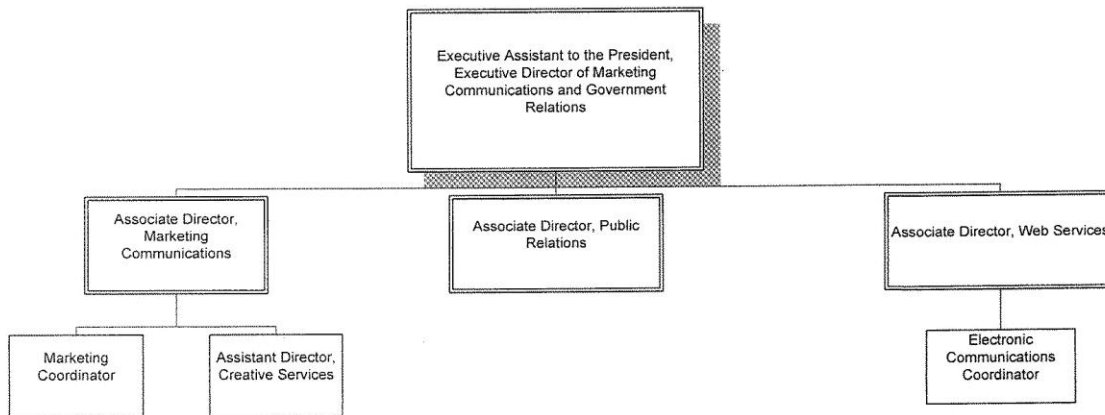


September 2009

Marketing/Communications

Wilkes University

Marketing/Communications



September 2009

FINANCES

Statement of Activities

	FY 2008	FY 2009
	AMOUNT	AMOUNT
REVENUES AND OTHER SUPPORT		
Tuition and Fees	\$ 74,734,827	\$ 79,647,342
Less Scholarship Aid	(22,895,089)	(22,556,975)
NET TUITION & FEES	51,839,738	57,090,367
Government Grants and Contracts	2,783,585	2,534,936
Private Gifts, Grants & Contracts	2,173,933	2,049,677
Sales and Services of Auxiliary Enterprises	10,436,404	9,737,912
Income from Interest and Dividends	753,181	483,155
Other Additions	1,112,816	884,500
Endowment Income Designated for Current Operations	1,300,000	1,530,321
TOTAL REVENUES AND OTHER SUPPORT	\$ 70,399,657	\$ 74,310,868
EXPENDITURES		
Instruction	\$ 32,033,947	\$ 36,018,758
Research	1,013,103	1,105,871
Public Service	1,123,499	1,017,456
Academic Support	4,761,126	5,592,934
Student Services	9,471,075	9,887,266
Institutional Support	13,654,180	13,639,869
Auxiliary Enterprises	6,773,231	6,443,840
TOTAL EXPENSES	\$ 68,830,161	\$ 73,705,994
 Increase in Net Assets from Operating Activities	 \$ 1,569,496	 \$ 604,874
NON-OPERATING INCOME (EXPENSES)		
Private Gifts and Grants	4,162,902	2,627,876
Net Investment Return After Application of Spending Policy	(2,002,000)	(10,897,851)
Net Realized and Unrealized Gain(Loss) on Derivative Instruments	-	-
Changes in Liabilities Under Split Interest Agreements and Perpetual Trusts	(152,703)	(1,097,320)
Increase(Decrease) in Net Assets from Non-Operating Activities	\$ 2,008,199	\$ (9,367,295)
Cumulative Effect of a Change in Accounting Principal	35,817	-
Change in Net Assets Due to Restatement	-	-
TOTAL CHANGE IN NET ASSETS	\$ 3,613,512	\$ (8,762,421)
Net Assets, Beginning of Year	\$ 73,363,322	\$ 76,976,834
Net Assets, End of Year	\$ 76,976,834	\$ 68,214,413

Source: Controller's Office

Endowment and Other Long-Term Investments

(At fair market value)

	<u>5/31/2008</u>	<u>5/31/2009</u>
Endowment and Similar Funds:		
Cash and cash equivalents	\$ 3,843,561	\$ 1,208,429
Fixed income investments	6,103,848	5,488,532
Common, preferred stocks and equity funds	22,506,023	18,397,940
Alternative investments	6,390,471	4,353,927
Total	<u>\$ 38,843,903</u>	<u>\$ 29,448,828</u>
 Annuity and Life Income Funds:		
Cash and cash equivalents	\$ 44,178	\$ 24,851
Bonds, notes and bond funds	145,402	133,795
Common, preferred stocks and equity funds	484,470	308,387
Alternative Investments	39,407	27,458
Total	<u>\$ 713,457</u>	<u>\$ 494,491</u>
 Total Endowment and Similar Funds	<u>\$ 39,557,360</u>	<u>\$ 29,943,319</u>
 Investments:		
Current Funds:		
Cash and cash equivalents	\$ 46,018	\$ 66,907
Certificates of deposit	-	-
Bonds, notes and bond funds	232,553	237,742
Common, preferred stocks and equity funds	422,635	238,948
Total Investments	<u>\$ 701,206</u>	<u>\$ 543,597</u>
 Deposits with Bond Trustee:		
Cash and cash equivalents	\$ 2,180,782	\$ 2,194,591
Total Deposits	<u>\$ 2,180,782</u>	<u>\$ 2,194,591</u>
 Total Endowment, Investments and Similar Funds	<u>\$ 42,439,348</u>	<u>\$ 32,681,507</u>

Source: Controller's Office

Tuition, Fees, Room and Board Charges

		<u>FY2007</u>	<u>FY2008</u>	<u>FY2009</u>	<u>FY 2010</u>
FULL-TIME	UNDERGRADUATE (Annual):				
Tuition:	Full-time Tuition (12-18 Credits per semester)	\$21,830	\$22,820	\$23,850	\$24,690
Fees:	General University Fee	\$650	\$680	\$710	\$710
	Student Activity Fee	210	220	230	230
	Technology Fee	200	250	270	270
	Student Union Fee	40	50	50	50
	Recreation Fee	60	60	60	60
	Total Fees	\$1,160	\$1,260	\$1,320	\$1,320
	Total Tuition & Fees	\$22,990	\$24,080	\$25,170	\$26,010
PART-TIME	(Per Credit Hour)				
	Tuition	\$605	\$630	\$660	\$685
	General University Fee	30	30	30	30
	Technology Fee	20	25	30	30
	Total Cost	\$655	\$685	\$720	\$745
FULL-TIME	FIRST PROFESSIONAL (Annual):				
Tuition:	Full-time Tuition (12-18 Credits per semester)	\$23,200	\$24,250	\$25,350	\$26,240
Fees:	General University Fee	\$650	\$680	\$710	\$710
	Pharmacy Clerkship Fee	420	440	840	960
	Student Activity Fee	210	220	230	230
	Technology Fee	200	250	270	270
	Student Union Fee	40	50	50	50
	Recreation Fee	60	60	60	60
	Total Fees	\$1,580	\$1,700	\$2,160	\$2,280
	Total Tuition & Fees	\$24,780	\$25,950	\$27,510	\$28,520
ROOM AND BOARD					
Room:	Residence Hall - Apartment Style	\$6,570	\$6,870	\$7,180	\$7,400
	Residence Hall - Dorm	5,940	6,210	6,490	6,680
	Residence Hall – Single Room	6,240	6,520	6,820	7,020
Board:	Colonel Gold Plus (19 meals per week)	\$3,920	\$4,100	\$4,290	\$4,420
	Colonel Blue Plus	3,530	3,690	3,860	3,980
	Colonel Gold	3,840	4,010	4,190	4,320
	Colonel Blue	3,340	3,490	3,650	3,760
	Senior	1,700	1,780	2,160	1,920

(Continued on following page)

Tuition, Fees, Room and Board Charges (continued)

	<u>FY2007</u>	<u>FY2008</u>	<u>FY2009</u>	<u>FY2010</u>
GRADUATE (Per Credit Hour):				
Tuition	\$760	\$760	\$795	\$795
General University Fee	30	30	30	30
Technology Fee	20	25	30	30
Total Cost	<u>\$810</u>	<u>\$815</u>	<u>\$855</u>	<u>\$855</u>

GRADUATE (Per Credit Hour) Education Program

Tuition-Summer	<u>\$327</u>	<u>\$335</u>	<u>\$345</u>	<u>\$357</u>
Tuition-Fall/Spring	<u>335</u>	<u>346</u>	<u>357</u>	<u>370</u>

GRADUATE (Per Credit Hour) MBA Program

Tuition	\$655	\$685	\$715	\$715
General University Fee	30	30	30	30
Technology Fee	20	25	30	30
Total Cost	<u>\$705</u>	<u>\$740</u>	<u>\$775</u>	<u>\$775</u>

GRADUATE (Per Credit Hour) Creative Writing Program

Tuition	\$540	\$565	\$590	\$608
General University Fee	20	25	30	30
Technology Fee	25	25	30	30
Total Cost	<u>\$585</u>	<u>\$615</u>	<u>\$650</u>	<u>\$668</u>

GRADUATE (Per Credit Hour) Ed. D. Program

Tuition-Fall/Spring	<u>-</u>	<u>\$415</u>	<u>\$435</u>	<u>\$463</u>
---------------------	----------	--------------	--------------	--------------

Source: Controller's Office

Tuition Comparison, Wilkes and Other Institutions

Tuition and Fees	<u>2006-07</u>	<u>2007-08</u>	<u>2008-09</u>	<u>2009-10</u>	<u>% most recent increase</u>
Wilkes University	\$22,990	\$24,080	\$25,170	\$26,010	3.3%
Bloomsburg University	6,412	6,623	6,848	7,110	3.8%
Drexel University	25,450	28,780	30,440	31,835	4.6%
Duquesne University	22,665	23,950	25,475	26,468	3.9%
East Stroudsburg University	6,577	6,737	7,090	7,394	4.3%
Elizabethtown College	26,950	29,000	30,650	31,800	3.8%
Fairleigh Dickinson University (Main Campus)	24,644	25,624	27,784	29,066	4.6%
King's College	22,280	23,450	24,680	25,644	3.9%
Kutztown University	6,619	6,873	7,126	7,398	3.8%
Lebanon Valley College	26,385	27,800	29,350	30,490	3.9%
Lock Haven University	6,445	6,679	6,917	7,201	4.1%
Luzerne County Community College (30 cr hrs)	2,790	2,880	2,880	3,090	7.3%
Lycoming College	25,605	27,129	28,764	29,894	3.9%
Mansfield University	6,676	6,979	7,359	7,756	5.4%
Marywood University	22,760	23,990	25,390	26,270	3.5%
Millersville University	6,398	6,624	6,866	7,147	4.1%
Misericordia University	20,860	21,950	23,150	24,050	3.9%
Moravian College	26,775	28,388	30,062	31,250	4.0%
Penn State University- University Park***	12,450	12,844	13,706	14,416	5.2%
Penn State Wilkes-Barre***	10,806	11,006	11,700	12,150	3.8%
Rutgers University (New Brunswick)**	9,958	10,614	11,560	11,886	2.8%
Shippensburg University	6,549	6,848	7,099	7,444	4.9%
Susquehanna University	27,620	29,330	31,080	32,450	4.4%
Temple University	10,180	10,802	11,448	11,764	2.8%
University of Delaware*	18,450	19,400	21,126	23,186	9.8%
University of Pittsburgh	12,138	12,876	13,642	14,154	3.8%
University of Scranton	25,938	28,758	31,576	33,124	4.9%
University of the Sciences in Philadelphia	25,392	26,900	28,506	29,630	3.9%
West Chester University	6,293	6,676	6,737	7,211	7.0%

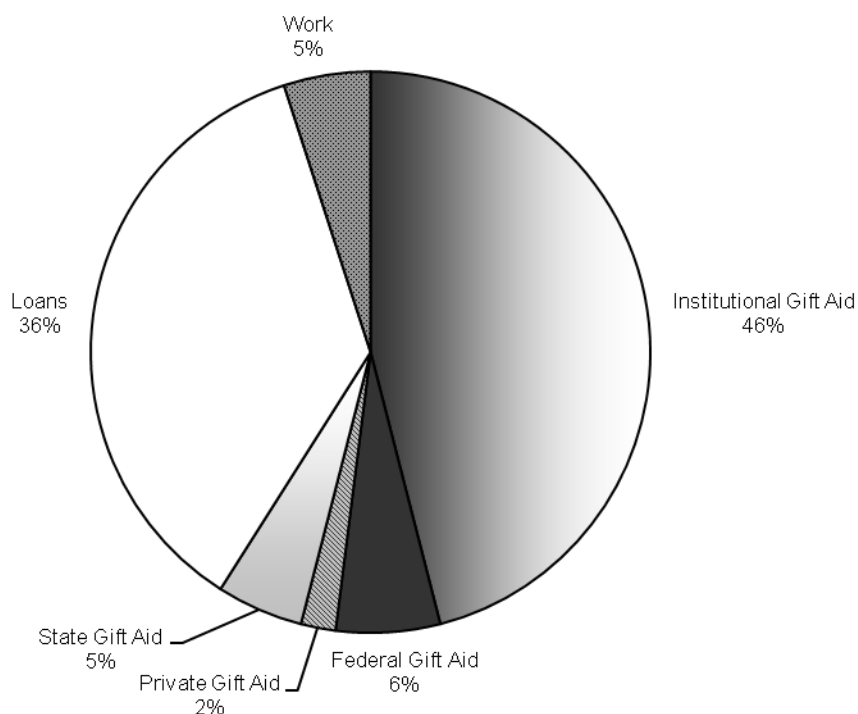
* *Non-resident tuition*

** *NJ resident*

*** *PA resident*

Student Financial Aid

Financial Aid Awarded to Fall 2009 Full-Time Undergraduate Students* by Source



Percentage of Full-Time Undergraduates* Awarded Some Form of Financial Aid	95.6%
Percentage of First-Time Full-Time Freshmen Awarded Some Form of Financial Aid	98.9%
Average Financial Aid Package Awarded to Full-Time Undergraduate Students* (including work study and loans to students)	\$23,570
Percentage of 2009 Bachelor's Degree Recipients Who Borrowed	87.3%
Estimated Average Indebtedness of 2009 Bachelor's Degree Recipients Who Borrowed	\$34,775
Percentage of 2009 Doctor of Pharmacy (D.Ph.) Degree Recipients Who Borrowed	88.5%
Estimated Average Indebtedness of 2009 D.Ph. Degree Recipients Who Borrowed	\$65,224

* Includes first- and second-year students in the School of Pharmacy

Wilkes Alumni

Alumni by Graduation Year (Undergraduate only)

Graduation Year	Graduates	Alumni of Record*	% Constituents	Deceased
1935 - 1939	354	41	0.15%	205
1940 - 1949	1,181	305	1.12%	493
1950 - 1959	2,786	1,089	3.99%	761
1960 - 1969	3,361	2,295	8.41%	357
1970 - 1979	5,354	3,857	14.14%	231
1980 - 1989	5,424	4,198	15.39%	122
1990 - 1999	5,875	5,112	18.74%	51
2000 - 2009	10,708	10,376	38.04%	15
TOTAL	35,043	27,273	100.00%	2,235

** Solicitable alumni (excludes deceased, bad addresses & those requesting no solicitation)*

Alumni Giving

	2004-05	2005-06	2006-07	2007-08	2008-09
Undergraduate Alumni of Record	14,694	15,006	16,609	17,029	17,762
Undergraduate Alumni Donors	2,361	2,422	2,574	2,668	2,800
Alumni Giving Rate	16.1%	16.1%	15.5%	15.7%	15.8%

Source: Advancement Division

Funds Raised
(Cash Basis)

<u>By Source</u>	<u>FY2008</u>	<u>FY2009</u>
Alumni	\$ 1,021,648	\$ 1,245,278
Parents	740	-
Other	2,589,871	749,035
Foundations	225,158	260,417
Corporation/Business	316,453	410,849
Total	<u>\$ 4,153,870</u>	<u>\$ 2,665,579</u>

<u>By Purpose</u>	<u>FY2008</u>	<u>FY2009</u>
Unrestricted	\$ 1,028,838	\$ 484,371
Academic Divisions	301,445	1,508
Public Service	234,501	209,905
Library	3,606	7,679
Physical Plant	11,425	1,050
Student Financial Aid	107,751	240,112
Other Restricted	268,244	264,561
Property	5,000	5,000
Endowment (restricted)	2,102,549	1,406,574
Endowment (unrestricted)	2,927	3,282
Research	15,610	250
Athletics	71,974	41,287
Total	<u>\$ 4,153,870</u>	<u>\$ 2,665,579</u>

Source: Advancement Division

FACILITIES

Building Inventory – Assignable Square Footage

Buildings:	Admin	Classrooms, Labs, Galleries, Studios	Faculty Offices	Residence Halls	Other Aux. Buildings	Total
Allan P. Kirby Center	1,800				1,200	3,000
Annette Evans House*	1,018					1,018
Barre Hall*				7,553		7,553
Bedford Hall	1,200	2,487	848			4,535
Breiseth Hall	2,000	18,880	10,000			30,880
Capin Hall	971	450	3,756			5,177
Catlin Hall				5,097		5,097
Ceramics Studio		1,800				1,800
Chase Hall	3,973					3,973
Conyngham Hall	1,898					1,898
Darte Center	437		661		9,000	10,098
Darte Hall	975	14,529	4,870			20,374
Doane Hall				3,353		3,353
Evans Hall				41,724	1,421	43,145
Facilities & Support Operations	14,000					14,000
Farley Library					45,282	45,282
Fenner Hall	350				800	1,150
Fortinsky Hall				11,718		11,718
Henry Student Center					48,000	48,000
Hollenback Hall	2,978					2,978
Kirby Hall	610	2,031	3,621			6,262
Marts Center	1,000	7,775			46,654	55,429
McCole House					8,300	8,300
Moat/Miner Hall					1,500	1,500
Munson Field House	400	800			38,000	39,200
O'Hop Hall					3,772	3,772
Parking Garage	4,500				104,832	109,332
Passan Hall	9,815					9,815
Pearsall Hall		1,500	5,100			6,600
Rifkin Hall				10,000		10,000
Ross Hall*				2,792		2,792
Roth Center	12,340					12,340
Roth Residence Hall				18,152		18,152
Schiowitz Hall				11,356		11,356
Slocum Hall				6,107		6,107
Stark Learning Center	2,127	111,655	14,610			128,392
Sterling Hall				5,355		5,355
Sturdevant Hall				7,329		7,329
Sullivan Hall				5,852		5,852

(Continued on following page)

FACILITIES (continued)

Buildings:	Admin	Classrooms, Labs, Galleries, Studios	Faculty Offices	Residence Halls	Other Aux. Buildings	Total
UCoM	43,000	36,000			2,000	81,000
University Tower				103,214	66,786	170,000
Waller North & South				18,771		18,771
Weckesser Hall & Annex					13,691	13,691
Weiss Hall				4,487		4,487
30 West River St.					5,802	5,802
70-72 Wright St.					7,200	7,200
247 South Franklin St.*					6,100	6,100
245 South River St			2,500		6,875	9,375
258 South River St.*				3,000		3,000
321-323 South River St.*				5,400		5,400
324 South River St.*					4,500	4,500
325-327 South River St.*				5,965		5,965
339 South River St.*				3,164		3,164
Total	105,392	197,907	45,966	280,389	421,715	1,051,369

** Building is offline*

Source: Capital Projects & Planning

Eugene S. Farley Library

Fall 2009 Resources:

Print Collection

Total Books	204,975
Book Additions	1,743
Total Bound Periodicals	12,064
Current Print Subscriptions	474
Microformats	839,816

A-V Collection

DVD's	949
VHS	15
CD Books	77

Digital Resources

Online Journals	10,000+
Licensed Databases	70+

Expenditures (\$)

Books & Monographs	29,872
Print Periodicals (Print & Online)	114,714
A-V Resources	2,924
Online Databases	101,732

Usage Statistics

Total Circulations	14,559
Turnstile Count	188,469
Interlibrary Loans	2,192
Information Literacy Classes	128
Reference Questions	3,062

Computers

Desktops Available	44
Laptops Available	14
Laptop Loans	4,076
Instructional Desktops	13

Staff

Professional Librarians	5
Technicians	10

Source: Library

Computing Inventory

Computers Available for Student Use

Closed labs, classrooms, clubs	483
--------------------------------	-----

Open access labs	82
------------------	----

Computers Available for Administrative & Faculty Use	881
---	------------

Total	1,446
--------------	--------------

Servers	98
----------------	----

Storage	57 Terabytes
----------------	--------------

Network Printers	133
-------------------------	-----

Source: Information Technology Services

ACCREDITATIONS

Regional:

Middle States Association of Colleges and Schools

Professional:

American Chemical Society

Commission on Collegiate Nursing Education

Engineering Accreditation Commission

Accreditation Board of Engineering and
Technology

Association of Collegiate Business Schools and Programs

American Council on Pharmaceutical Education

GLOSSARY

Census Date

The completion of six weeks of classes

First-Generation Student

A student whose parents have never enrolled in college

First-Professional Program

The First-Professional Program requires the completion of the academic requirements to begin practice in the profession; at least two years of college work prior to entering the program; and a total of at least six academic years of college work to complete the degree program, including prior required college work plus the length of the professional program itself.

First-Professional Student

A student enrolled in the Pharmacy Program

First-Time Freshman

An entering freshman who has never attended any college. Includes students enrolled in the fall term who attended for the first time in the prior summer term. Includes students who entered with advanced standing (college credits earned before graduation from high school).

FTE (Full-Time Equivalent)

A full-time Undergraduate, Graduate, or First-Professional Student is equivalent to one FTE

Part-time Undergraduate and First-Professional FTE is calculated by dividing part-time registered credits by fifteen

Part-time Graduate FTE is calculated by dividing part-time registered credits by nine

Full-time Student

Undergraduate and First-Professional - A student enrolled for twelve or more semester credits each term

Graduate - A student enrolled for nine or more semester credits

Graduate Student

A student who holds a bachelor's or first-professional degree, or equivalent, and is taking courses at the post-baccalaureate level

International Student (Nonresident Alien)

A person who is not a citizen or national of the United States and who is in this country on a visa or temporary basis and does not have the right to remain indefinitely

Part-time Student

Undergraduate and First-Professional - A student enrolled for less than twelve credits

Graduate - A student enrolled for less than nine credits

Tenure

Status of a personnel position, or a person occupying a position or occupation, with respect to permanence of the position

Tenure Track

Status of personnel positions that lead to consideration for tenure

Undergraduate Student

A student enrolled in a four-year bachelor's degree program