



Office of Information, Analysis and Planning — November 2008

2008-09 FACT BOOK



Table of Contents

| | |
|--|-----------|
| STUDENTS | 1 |
| Fall Enrollment Trends | 1 |
| Fall Enrollment by Gender..... | 2 |
| Fall Enrollment by Ethnicity | 3 |
| Fall Enrollment Percentages | 5 |
| Fall Enrollment by Primary Major | 6 |
| Fall Enrollment by Residence | 10 |
| Fall Enrollment by Age Category | 10 |
| Fall Enrollment by State of Origin..... | 11 |
| International Students | 12 |
| First Generation College Students from Entering Freshman Class | 12 |
| Programs Offered | 13 |
| Degrees Granted by Department and Major..... | 14 |
| Admissions | 16 |
| Average SAT Scores for First-time Full-time Freshmen..... | 16 |
| Undergraduate Retention of First-time Full-time Freshmen | 17 |
| Graduation Rates for First-time Full-time Freshmen..... | 18 |
| Student Credit Hours by Department and Subject | 19 |
| Student Clubs..... | 21 |
| Leadership Institute | 22 |
| University College Programs and Services..... | 22 |
| Community Service..... | 23 |
| Career Placement of 2007 Graduates | 23 |
| Athletics..... | 24 |
| FACULTY AND STAFF | 25 |
| Staff by Category and Gender..... | 25 |
| Faculty by Gender and Tenure Status | 26 |
| Full-time Faculty by Department..... | 27 |
| Full-time Faculty Degrees..... | 27 |
| Faculty and Staff by Ethnicity | 28 |

| | |
|---|------------------|
| ORGANIZATIONAL CHARTS..... | 29 |
| Administrative | 29 |
| Finance and Support Operations..... | 30 |
| Academic Affairs..... | 31 |
| Enrollment Services..... | 32 |
| Advancement | 33 |
| Student Affairs | 34 |
| Human Resources and Organizational Development..... | 35 |
| FINANCES | 36 |
| Statement of Activities | 36 |
| Endowment and Other Long-Term Investments | 37 |
| Tuition, Fees, Room and Board Charges | 38 |
| Tuition Comparison, Wilkes and Other Institutions | 40 |
| Student Financial Aid | 41 |
| Wilkes Alumni | 42 |
| Funds Raised | 43 |
| <i>FACILITIES</i> | <i>44</i> |
| Building Inventory – Assignable Square Footage | 44 |
| Eugene S. Farley Library | 46 |
| Computing Inventory | 47 |
| <i>ACCREDITATIONS.....</i> | <i>47</i> |
| GLOSSARY..... | 48 |

STUDENTS

Fall Enrollment Trends

As of official census date

| | <u>2004</u> | <u>2005</u> | <u>2006</u> | <u>2007</u> | <u>2008</u> |
|---------------------------|--------------|--------------|--------------|--------------|--------------|
| Undergraduate | | | | | |
| Full-time | 1,896 | 1,968 | 2,010 | 2,110 | 2,084 |
| Part-time | 212 | 220 | 235 | 226 | 225 |
| Total | 2,108 | 2,188 | 2,245 | 2,336 | 2,309 |
| FTE | 1,968 | 2,051 | 2,095 | 2,192 | 2,162 |
| Graduate | | | | | |
| Full-time | 96 | 157 | 173 | 215 | 277 |
| Part-time | 1,881 | 1,862 | 2,091 | 2,288 | 3,046 |
| Total | 1,977 | 2,019 | 2,264 | 2,503 | 3,323 |
| FTE | 840 | 903 | 1,017 | 1,168 | 1,566 |
| First-Professional | | | | | |
| Full-time | 275 | 272 | 267 | 274 | 268 |
| Part-time | 4 | 1 | 1 | 1 | 1 |
| Total | 279 | 273 | 268 | 275 | 269 |
| FTE | 277 | 272 | 267 | 274 | 268 |
| Total | | | | | |
| Full-time | 2,267 | 2,397 | 2,450 | 2,599 | 2,629 |
| Part-time | 2,097 | 2,083 | 2,327 | 2,515 | 3,272 |
| Total | 4,364 | 4,480 | 4,777 | 5,114 | 5,901 |
| FTE | 3,085 | 3,226 | 3,379 | 3,634 | 3,996 |

Fall Enrollment by Gender

As of official census date

| | <u>2004</u> | <u>2005</u> | <u>2006</u> | <u>2007</u> | <u>2008</u> |
|------------------------------------|--------------|--------------|--------------|--------------|--------------|
| Undergraduate Students | | | | | |
| Male Full-time | 919 | 924 | 974 | 1,044 | 1,045 |
| Female Full-time | <u>977</u> | <u>1,044</u> | <u>1,036</u> | <u>1,066</u> | <u>1,039</u> |
| Total | <u>1,896</u> | <u>1,968</u> | <u>2,010</u> | <u>2,110</u> | <u>2,084</u> |
| | | | | | |
| Male Part-time | 100 | 107 | 97 | 122 | 105 |
| Female Part-time | <u>112</u> | <u>113</u> | <u>138</u> | <u>104</u> | <u>120</u> |
| Total | <u>212</u> | <u>220</u> | <u>235</u> | <u>226</u> | <u>225</u> |
| First-Professional Students | | | | | |
| Male Full-time | 97 | 97 | 100 | 105 | 105 |
| Female Full-time | <u>178</u> | <u>175</u> | <u>167</u> | <u>169</u> | <u>163</u> |
| Total | <u>275</u> | <u>272</u> | <u>267</u> | <u>274</u> | <u>268</u> |
| | | | | | |
| Male Part-time | 2 | 0 | 0 | 0 | 0 |
| Female Part-time | <u>2</u> | <u>1</u> | <u>1</u> | <u>1</u> | <u>1</u> |
| Total | <u>4</u> | <u>1</u> | <u>1</u> | <u>1</u> | <u>1</u> |
| Graduate Students | | | | | |
| Male Full-time | 38 | 63 | 75 | 102 | 127 |
| Female Full-time | <u>58</u> | <u>94</u> | <u>98</u> | <u>113</u> | <u>150</u> |
| Total | <u>96</u> | <u>157</u> | <u>173</u> | <u>215</u> | <u>277</u> |
| | | | | | |
| Male Part-time | 598 | 596 | 653 | 728 | 967 |
| Female Part-time | <u>1,283</u> | <u>1,266</u> | <u>1,438</u> | <u>1,560</u> | <u>2,079</u> |
| Total | <u>1,881</u> | <u>1,862</u> | <u>2,091</u> | <u>2,288</u> | <u>3,046</u> |
| Total University | | | | | |
| Male Full-time | 1,054 | 1,084 | 1,149 | 1,251 | 1,277 |
| Female Full-time | <u>1,213</u> | <u>1,313</u> | <u>1,301</u> | <u>1,348</u> | <u>1,352</u> |
| Total | <u>2,267</u> | <u>2,397</u> | <u>2,450</u> | <u>2,599</u> | <u>2,629</u> |
| | | | | | |
| Male Part-time | 700 | 703 | 750 | 850 | 1,072 |
| Female Part-time | <u>1,397</u> | <u>1,380</u> | <u>1,577</u> | <u>1,665</u> | <u>2,200</u> |
| Total | <u>2,097</u> | <u>2,083</u> | <u>2,327</u> | <u>2,515</u> | <u>3,272</u> |

Fall Enrollment by Ethnicity

As of official census date

| | <u>2004</u> | <u>2005</u> | <u>2006</u> | <u>2007</u> | <u>2008</u> |
|------------------------------------|--------------------|--------------------|--------------------|--------------------|--------------------|
| Undergraduate Students | | | | | |
| Full-time | | | | | |
| Caucasian | 1,773 | 1,802 | 1,834 | 1,865 | 1,753 |
| American Indian/Alaskan | 4 | 2 | 4 | 6 | 4 |
| Asian/Pacific Islander | 42 | 46 | 60 | 55 | 45 |
| Black | 42 | 46 | 58 | 66 | 72 |
| Hispanic | 31 | 37 | 37 | 54 | 52 |
| International | 4 | 5 | 17 | 37 | 54 |
| Unidentified | 0 | 30 | 0 | 27 | 104 |
| Total Full-time | <u>1,896</u> | <u>1,968</u> | <u>2,010</u> | <u>2,110</u> | <u>2,084</u> |
| Part-time | | | | | |
| Caucasian | 205 | 179 | 217 | 156 | 142 |
| American Indian/Alaskan | 0 | 1 | 1 | 1 | 0 |
| Asian/Pacific Islander | 3 | 3 | 4 | 3 | 4 |
| Black | 0 | 6 | 5 | 4 | 8 |
| Hispanic | 2 | 4 | 2 | 3 | 1 |
| International | 0 | 1 | 1 | 9 | 4 |
| Unidentified | 2 | 26 | 5 | 50 | 66 |
| Total Part-time | <u>212</u> | <u>220</u> | <u>235</u> | <u>226</u> | <u>225</u> |
| First-Professional Students | | | | | |
| Full-time | | | | | |
| Caucasian | 258 | 254 | 252 | 258 | 250 |
| American Indian/Alaskan | 2 | 1 | 1 | 1 | 0 |
| Asian/Pacific Islander | 11 | 11 | 12 | 12 | 13 |
| Black | 2 | 3 | 0 | 0 | 1 |
| Hispanic | 1 | 1 | 1 | 1 | 1 |
| International | 1 | 2 | 1 | 2 | 3 |
| Unidentified | 0 | 0 | 0 | 0 | 0 |
| Total Full-time | <u>275</u> | <u>272</u> | <u>267</u> | <u>274</u> | <u>268</u> |
| Part-time | | | | | |
| Caucasian | 2 | 1 | 1 | 1 | 1 |
| American Indian/Alaskan | 0 | 0 | 0 | 0 | 0 |
| Asian/Pacific Islander | 0 | 0 | 0 | 0 | 0 |
| Black | 2 | 0 | 0 | 0 | 0 |
| Hispanic | 0 | 0 | 0 | 0 | 0 |
| International | 0 | 0 | 0 | 0 | 0 |
| Unidentified | 0 | 0 | 0 | 0 | 0 |
| Total Part-time | <u>4</u> | <u>1</u> | <u>1</u> | <u>1</u> | <u>1</u> |

(Continued on following page)

Fall Enrollment by Ethnicity (continued)

| | <u>2004</u> | <u>2005</u> | <u>2006</u> | <u>2007</u> | <u>2008</u> |
|--------------------------|--------------|--------------|--------------|--------------|--------------|
| Graduate Students | | | | | |
| Full-time | | | | | |
| Caucasian | 75 | 122 | 130 | 159 | 171 |
| American Indian/Alaskan | 0 | 0 | 2 | 2 | 3 |
| Asian/Pacific | 4 | 2 | 4 | 4 | 3 |
| Black | 3 | 6 | 7 | 7 | 5 |
| Hispanic | 0 | 1 | 1 | 1 | 3 |
| International | 14 | 26 | 29 | 31 | 52 |
| Unidentified | 0 | 0 | 0 | 11 | 40 |
| Total Full-time | <u>96</u> | <u>157</u> | <u>173</u> | <u>215</u> | <u>277</u> |
| Part-time | | | | | |
| Caucasian | 1,775 | 1,758 | 2,005 | 2,113 | 2,631 |
| American Indian/Alaskan | 0 | 1 | 3 | 2 | 0 |
| Asian/Pacific | 6 | 3 | 5 | 17 | 14 |
| Black | 4 | 10 | 7 | 10 | 14 |
| Hispanic | 13 | 14 | 19 | 20 | 22 |
| International | 7 | 5 | 10 | 18 | 14 |
| Unidentified | 76 | 71 | 42 | 108 | 351 |
| Total Part-time | <u>1,881</u> | <u>1,862</u> | <u>2,091</u> | <u>2,288</u> | <u>3,046</u> |
| Total University | | | | | |
| Full-time | | | | | |
| Caucasian | 2,106 | 2,178 | 2,216 | 2,282 | 2,174 |
| American Indian/Alaskan | 6 | 3 | 7 | 9 | 7 |
| Asian/Pacific | 57 | 59 | 76 | 71 | 61 |
| Black | 47 | 55 | 65 | 73 | 78 |
| Hispanic | 32 | 39 | 39 | 56 | 56 |
| International | 19 | 33 | 47 | 70 | 109 |
| Unidentified | 0 | 30 | 0 | 38 | 144 |
| Total Full-time | <u>2,267</u> | <u>2,397</u> | <u>2,450</u> | <u>2,599</u> | <u>2,629</u> |
| Part-time | | | | | |
| Caucasian | 1,982 | 1,938 | 2,223 | 2,270 | 2,774 |
| American Indian/Alaskan | 0 | 2 | 4 | 3 | 0 |
| Asian/Pacific | 9 | 6 | 9 | 20 | 18 |
| Black | 6 | 16 | 12 | 14 | 22 |
| Hispanic | 15 | 18 | 21 | 23 | 23 |
| International | 7 | 6 | 11 | 27 | 18 |
| Unidentified | 78 | 97 | 47 | 158 | 417 |
| Total Part-time | <u>2,097</u> | <u>2,083</u> | <u>2,327</u> | <u>2,515</u> | <u>3,272</u> |

Fall Enrollment Percentages

Status

| | Undergraduate | First Professional | Graduate | Total |
|-----------|----------------------|---------------------------|-----------------|--------------|
| Full-time | 90.3% | 99.6% | 8.3% | 44.6% |
| Part-time | 9.7% | 0.4% | 91.7% | 55.4% |

Ethnicity

| Full-time | Undergraduate | First Professional | Graduate | Total |
|-------------------------|----------------------|---------------------------|-----------------|--------------|
| Caucasian | 84.1% | 93.3% | 61.7% | 82.7% |
| American Indian/Alaskan | 0.2% | 0.0% | 1.1% | 0.3% |
| Asian/Pacific Islander | 2.2% | 4.9% | 1.1% | 2.3% |
| Black | 3.5% | 0.4% | 1.8% | 3.0% |
| Hispanic | 2.5% | 0.4% | 1.1% | 2.1% |
| International | 2.6% | 1.1% | 18.8% | 4.1% |
| Unidentified | 5.0% | 0.0% | 14.4% | 5.5% |

Part-time

| | | | | |
|-------------------------|-------|--------|-------|-------|
| Caucasian | 63.1% | 100.0% | 86.3% | 84.8% |
| American Indian/Alaskan | 0.0% | 0.0% | 0.0% | 0.0% |
| Asian/Pacific Islander | 1.8% | 0.0% | 0.5% | 0.6% |
| Black | 3.6% | 0.0% | 0.5% | 0.7% |
| Hispanic | 0.4% | 0.0% | 0.7% | 0.7% |
| International | 1.8% | 0.0% | 0.5% | 0.6% |
| Unidentified | 29.3% | 0.0% | 11.6% | 12.7% |

Total

| | | | | |
|-------------------------|-------|-------|-------|-------|
| Caucasian | 82.1% | 93.3% | 84.3% | 83.9% |
| American Indian/Alaskan | 0.2% | 0.0% | 0.1% | 0.1% |
| Asian/Pacific Islander | 2.1% | 4.8% | 0.5% | 1.3% |
| Black | 3.5% | 0.4% | 0.6% | 1.7% |
| Hispanic | 2.3% | 0.4% | 0.8% | 1.3% |
| International | 2.5% | 1.1% | 2.0% | 2.2% |
| Unidentified | 7.4% | 0.0% | 11.8% | 9.5% |

Gender

| Full-time | Undergraduate | First Professional | Graduate | Total |
|------------------|----------------------|---------------------------|-----------------|--------------|
| Male | 50.1% | 39.2% | 45.8% | 48.6% |
| Female | 49.9% | 60.8% | 54.2% | 51.4% |
| Part-time | | | | |
| Male | 46.7% | 0.0% | 31.7% | 32.8% |
| Female | 53.3% | 100.0% | 68.3% | 67.2% |
| Total | | | | |
| Male | 49.8% | 39.0% | 32.9% | 39.8% |
| Female | 50.2% | 61.0% | 67.1% | 60.2% |

Fall Enrollment by Primary Major

As of official census date

Full-time Undergraduate

| | Fall 2004 | Fall 2005 | Fall 2006 | Fall 2007 | Fall 2008 |
|--|------------|------------|------------|------------|------------|
| Department of Biology & Health Sciences | 177 | 152 | 147 | 146 | 139 |
| Biology | 173 | 149 | 145 | 140 | 135 |
| Clinical Laboratory Science | - | - | - | - | 1 |
| Medical Technology | 4 | 3 | 2 | 6 | 3 |
| Department of Chemistry | 73 | 82 | 77 | 61 | 43 |
| Biochemistry | 30 | 39 | 35 | 27 | 16 |
| Chemistry | 43 | 43 | 42 | 34 | 27 |
| Division of Business Admin & Accounting | 223 | 272 | 290 | 315 | 306 |
| Accounting | 64 | 67 | 76 | 89 | 82 |
| Business Administration | 155 | 193 | 193 | 191 | 192 |
| e-Business | 1 | 1 | - | - | - |
| Entrepreneurship | 3 | 11 | 21 | 35 | 32 |
| Department of Communication Studies | 104 | 97 | 98 | 108 | 88 |
| Department of Education | 146 | 142 | 145 | 124 | 113 |
| Elementary Education | 146 | 142 | 145 | 103 | 68 |
| Pre-Elementary Education | - | - | - | 21 | 45 |
| Division of Engineering & Physics | 130 | 134 | 139 | 172 | 161 |
| Applied Engineering Sciences | 6 | 8 | 3 | 4 | 3 |
| Electrical Engineering | 42 | 45 | 40 | 51 | 53 |
| Engineering | 14 | 9 | 12 | 10 | 5 |
| Engineering Management | 1 | 4 | 4 | 2 | 3 |
| Mechanical Engineering | 67 | 68 | 80 | 105 | 97 |
| Dept. of Environmental Engr. & Earth Sciences | 30 | 27 | 40 | 53 | 64 |
| Earth & Environmental Sciences | 13 | 12 | 15 | 20 | 27 |
| Environmental Engineering | 17 | 15 | 25 | 33 | 37 |
| Division of Humanities | 153 | 153 | 142 | 129 | 144 |
| English | 75 | 68 | 65 | 60 | 70 |
| Foreign Languages | 6 | 10 | 6 | 7 | 8 |
| History | 70 | 72 | 68 | 60 | 64 |
| Philosophy | 2 | 3 | 3 | 2 | 2 |
| Integrative Media | - | 6 | 15 | 26 | 32 |
| Department of Math & Computer Science | 74 | 68 | 59 | 55 | 65 |
| Computer Info Systems | 18 | 17 | 10 | 11 | 13 |
| Computer Science | 27 | 22 | 24 | 22 | 23 |
| Mathematics | 29 | 29 | 25 | 22 | 29 |
| Department of Nursing | 133 | 183 | 214 | 282 | 261 |
| Nursing | 133 | 183 | 214 | 282 | 261 |
| School of Pharmacy | 168 | 191 | 184 | 157 | 161 |
| Pre-Pharmacy | 168 | 175 | 161 | 141 | 143 |
| Pharmaceutical Sciences | - | 16 | 23 | 16 | 18 |

(Continued on following page)

Fall Enrollment by Primary Major (continued)

Full-time Undergraduate

| | Fall 2004 | Fall 2005 | Fall 2006 | Fall 2007 | Fall 2008 |
|---|--------------|--------------|--------------|--------------|--------------|
| Division of Behavioral and Social Sciences | 244 | 264 | 265 | 280 | 267 |
| Criminology | 74 | 95 | 96 | 88 | 90 |
| International Studies | 6 | 7 | 8 | 10 | 11 |
| Political Science | 29 | 29 | 30 | 37 | 34 |
| Psychology | 114 | 117 | 120 | 132 | 118 |
| Sociology | 21 | 16 | 11 | 13 | 14 |
| Department of Visual & Performing Arts | 52 | 47 | 37 | 24 | 25 |
| Music | 5 | 4 | 1 | - | - |
| Music Education | 8 | 8 | 4 | 1 | 1 |
| Musical Theatre | 15 | 15 | 16 | 11 | 10 |
| Theatre Arts | 23 | 19 | 15 | 12 | 14 |
| Visual & Performing Arts | 1 | 1 | 1 | - | - |
| Individualized Studies | - | - | - | 1 | - |
| Undeclared | 189 | 150 | 158 | 177 | 215 |
| Total | 1,896 | 1,968 | 2,010 | 2,110 | 2,084 |

Full-time Graduate

| | Fall 2004 | Fall 2005 | Fall 2006 | Fall 2007 | Fall 2008 |
|---|-----------|------------|------------|------------|------------|
| Division of Business Administration & Accounting | 32 | 30 | 30 | 42 | 52 |
| Business Administration | 32 | 30 | 30 | 42 | 52 |
| Graduate Teacher Education | 32 | 46 | 32 | 50 | 76 |
| Division of Engineering & Physics | 12 | 24 | 28 | 21 | 27 |
| Electrical Engineering | 12 | 24 | 28 | 20 | 18 |
| Engineering Operations & Strategy | - | - | - | 1 | 9 |
| Creative Writing | - | 34 | 54 | 73 | 97 |
| Department of Math & Computer Science | - | - | 1 | - | - |
| Mathematics | - | - | 1 | - | - |
| Department of Nursing | 17 | 23 | 27 | 28 | 15 |
| Undeclared | 3 | - | 1 | 1 | 10 |
| Total | 96 | 157 | 173 | 215 | 277 |

Full-time First-Professional

| | Fall 2004 | Fall 2005 | Fall 2006 | Fall 2007 | Fall 2008 |
|---------------------------|------------|------------|------------|------------|------------|
| School of Pharmacy | 275 | 272 | 267 | 274 | 268 |

(Continued on following page)

Fall Enrollment by Primary Major (continued)

Part-time Undergraduate

| | Fall 2004 | Fall 2005 | Fall 2006 | Fall 2007 | Fall 2008 |
|--|-----------|-----------|-----------|-----------|-----------|
| Department of Biology & Health Sciences | 7 | 16 | 7 | 6 | 10 |
| Biology | 7 | 15 | 7 | 6 | 10 |
| Medical Technology | - | 1 | - | - | - |
| Department of Chemistry | 2 | 5 | 5 | 4 | 5 |
| Biochemistry | 2 | 4 | 4 | 2 | 1 |
| Chemistry | - | 1 | 1 | 2 | 4 |
| Division of Business Admin & Accounting | 23 | 17 | 16 | 19 | 20 |
| Accounting | 4 | 3 | 6 | 5 | 4 |
| Business Administration | 19 | 14 | 9 | 14 | 16 |
| Entrepreneurship | - | - | 1 | - | - |
| Department of Communication Studies | 4 | 6 | 6 | 2 | 2 |
| Department of Education | 20 | 18 | 20 | 13 | 5 |
| Education | 20 | 18 | 20 | 13 | 3 |
| Pre-Elementary Education | - | - | - | - | 2 |
| Division of Engineering & Physics | 12 | 17 | 16 | 11 | 10 |
| Applied Engr Sciences | 2 | 3 | 3 | - | - |
| Electrical Engineering | 4 | 4 | 8 | 3 | 3 |
| Engineering | 1 | - | - | 1 | 1 |
| Engineering Management | 2 | 4 | - | 2 | 2 |
| Mechanical Engineering | 3 | 6 | 5 | 5 | 4 |
| Dept. of Environmental Engr. & Earth Sciences | 7 | 6 | 8 | 5 | 3 |
| Earth & Environmental Sciences | 7 | 2 | 2 | 1 | 2 |
| Environmental Engineering | - | 4 | 6 | 4 | 1 |
| Division of Humanities | 13 | 14 | 9 | 17 | 11 |
| English | 4 | 8 | 4 | 9 | 8 |
| Foreign Languages | - | - | 1 | - | - |
| History | 8 | 6 | 3 | 8 | 3 |
| Philosophy | 1 | - | 1 | - | - |
| Department of Integrative Media | - | - | - | 1 | 1 |
| Department of Math & Computer Science | 7 | 5 | 5 | 5 | 6 |
| Computer Info Systems | 2 | 1 | 1 | 3 | 1 |
| Computer Science | 3 | 1 | 1 | - | 3 |
| Mathematics | 2 | 3 | 3 | 2 | 2 |
| Department of Nursing | 16 | 32 | 37 | 14 | 16 |
| School of Pharmacy | - | - | 1 | - | 2 |
| Pre-Pharmacy | - | - | - | - | - |
| Pharmaceutical Science | - | - | 1 | - | 2 |

(Continued on following page)

Fall Enrollment by Primary Major (continued)

Part-time Undergraduate

| | Fall 2004 | Fall 2005 | Fall 2006 | Fall 2007 | Fall 2008 |
|---|------------|------------|------------|------------|------------|
| Division of Behavioral and Social Sciences | 22 | 18 | 25 | 27 | 23 |
| Criminology | 2 | 3 | 7 | 7 | 5 |
| International Studies | - | - | 1 | 1 | - |
| Political Science | 3 | 3 | 2 | 1 | - |
| Psychology | 12 | 9 | 10 | 12 | 13 |
| Sociology | 5 | 3 | 5 | 6 | 5 |
| Department of Visual & Performing Arts | - | 1 | - | 1 | - |
| Music | - | - | - | - | - |
| Music Education | - | 1 | - | 1 | - |
| Musical Theatre | - | - | - | - | - |
| Theatre Arts | - | - | - | - | - |
| Individualized Studies | 1 | - | - | - | - |
| Undeclared | 78 | 65 | 80 | 101 | 111 |
| Total | 212 | 220 | 235 | 226 | 225 |

Part-time Graduate

| | Fall 2004 | Fall 2005 | Fall 2006 | Fall 2007 | Fall 2008 |
|---|--------------|--------------|--------------|--------------|--------------|
| Division of Business Administration & Accounting | 124 | 146 | 149 | 151 | 111 |
| Business Administration | 124 | 146 | 149 | 151 | 111 |
| Graduate Teacher Education | 1,476 | 1,406 | 1,588 | 1,795 | 2,332 |
| Division of Engineering & Physics | 9 | 4 | 13 | 34 | 27 |
| Electrical Engineering | 9 | 4 | 10 | 19 | 12 |
| Engineering Operations & Strategy | - | - | 3 | 15 | 15 |
| Creative Writing | - | 7 | 5 | 19 | 10 |
| Department of Math & Computer Science | 1 | 2 | 4 | - | 3 |
| Mathematics | 1 | 2 | 4 | - | 3 |
| Department of Nursing | 8 | 14 | 12 | 31 | 33 |
| Undeclared | 263 | 283 | 320 | 258 | 530 |
| Total | 1,881 | 1,862 | 2,091 | 2,288 | 3,046 |

Part-time First-Professional

| | Fall 2004 | Fall 2005 | Fall 2006 | Fall 2007 | Fall 2008 |
|---------------------------|-----------|-----------|-----------|-----------|-----------|
| School of Pharmacy | 4 | 1 | 1 | 1 | 1 |

Fall Enrollment by Residence

Full-time Students

| | <u>Fall 2007</u> | | <u>Fall 2008</u> | |
|--|-------------------------|------------|-------------------------|------------|
| Residence Halls | | | | |
| First-time Freshmen | 486 | 78% | 418 | 75% |
| Undergraduate Students (including First-time Freshmen) | 948 | 45% | 891 | 43% |
| First-Professional Students | <u>45</u> | 16% | <u>37</u> | 14% |
| Total | 993 | 42% | 928 | 39% |

Off-Campus

| | | | | |
|--|--------------|------------|--------------|------------|
| First-time Freshmen | 134 | 22% | 143 | 25% |
| Undergraduate Students (including First-time Freshmen) | 1,162 | 55% | 1193 | 57% |
| First-Professional Students | <u>229</u> | 84% | <u>231</u> | 86% |
| Total | 1,391 | 58% | 1,424 | 61% |

Total Full-time

| | | |
|--|--------------|--------------|
| First-time Freshmen | 620 | 561 |
| Undergraduate Students (including First-time Freshmen) | 2,110 | 2,084 |
| First-Professional Students | <u>274</u> | <u>268</u> |
| Total | 2,384 | 2,352 |

Fall Enrollment by Age Category

Fall 2008 Enrollment

| | Full-time | | | Part-time | | | Total |
|----------------------|----------------------|---------------------------|-----------------|----------------------|---------------------------|-----------------|--------------|
| | Undergraduate | First-Professional | Graduate | Undergraduate | First-Professional | Graduate | |
| Under 18 | 1 | 0 | 0 | 54 | 0 | 0 | 55 |
| 18 - 19 | 884 | 2 | 0 | 29 | 0 | 0 | 915 |
| 20 - 21 | 821 | 95 | 2 | 19 | 0 | 0 | 937 |
| 22 - 24 | 300 | 157 | 77 | 46 | 1 | 261 | 842 |
| 25 - 29 | 54 | 12 | 83 | 33 | 0 | 1,073 | 1,255 |
| 30 - 34 | 16 | 2 | 35 | 12 | 0 | 536 | 601 |
| 35 - 39 | 5 | 0 | 24 | 7 | 0 | 390 | 426 |
| 40 - 49 | 2 | 0 | 23 | 20 | 0 | 516 | 561 |
| 50 - 64 | 1 | 0 | 29 | 5 | 0 | 268 | 303 |
| 65 & Over | 0 | 0 | 4 | 0 | 0 | 0 | 4 |
| Age unknown | 0 | 0 | 0 | 0 | 0 | 2 | 2 |
| Total | 2,084 | 268 | 277 | 225 | 1 | 3,046 | 5,901 |

Fall Enrollment by State of Origin

| Fall 2008 Enrollment | | | | | | | |
|----------------------|---------------|------------------------|--------------|---------------|------------------------|--------------|--------------|
| Full-time | | | | Part-time | | | |
| | Undergraduate | First- Professional | Graduate | Undergraduate | First- Professional | Graduate | Total |
| Alabama | 1 | | | | | | 1 |
| Alaska | | | 1 | | | 1 | 2 |
| Arizona | | | 1 | | | | 1 |
| California | 2 | 2 | 3 | | | 7 | 14 |
| Colorado | | | 1 | | | | 1 |
| Connecticut | 15 | | 1 | | | 2 | 18 |
| Delaware | 6 | 2 | 1 | | | 2 | 11 |
| Florida | 1 | | 1 | | | 1 | 3 |
| Georgia | | | 2 | | | 1 | 3 |
| Hawaii | | | | | | 1 | 1 |
| Illinois | 1 | | 2 | | | 5 | 8 |
| Indiana | | | 1 | | | 1 | 2 |
| Iowa | | | 2 | | | 1 | 3 |
| Maine | 6 | | | 1 | | | 7 |
| Massachusetts | 1 | | 2 | | | | 3 |
| Maryland | 15 | 1 | 1 | | | 7 | 24 |
| Michigan | 1 | | | | | 1 | 2 |
| Missouri | | | 1 | | | 1 | 2 |
| New Hampshire | 3 | | | 1 | | 2 | 6 |
| New Jersey | 264 | 14 | 6 | 7 | | 17 | 308 |
| New York | 127 | 11 | 11 | 4 | 1 | 12 | 166 |
| North Carolina | | | 1 | | | 2 | 3 |
| Ohio | 3 | 1 | 1 | | | 5 | 10 |
| Pennsylvania | 1,581 | 231 | 179 | 207 | | 2,942 | 5,140 |
| Puerto Rico | | | 1 | | | | 1 |
| Rhode Island | 1 | | | | | | 1 |
| South Carolina | | | 1 | | | 1 | 2 |
| Tennessee | | | | | | 1 | 1 |
| Texas | | | 1 | | | 5 | 6 |
| Virginia | 1 | 2 | 3 | 1 | | 5 | 12 |
| Vermont | | 1 | | | | | 1 |
| Washington | | | 1 | | | 2 | 3 |
| Wisconsin | | | | | | 2 | 2 |
| Canada | | | | | | 5 | 5 |
| Foreign Country | 55* | 3 | 52 | 4 | | 14 | 128 |
| Total | 2,084 | 268 | 277 | 225 | 1 | 3,046 | 5,901 |
| In State | 75.9% | 86.2% | 64.6% | 92.0% | 0.0% | 96.6% | 87.1% |
| Out of State | 21.5% | 12.7% | 16.6% | 6.2% | 100.0% | 2.8% | 10.6% |
| Foreign | 2.6% | 1.1% | 18.8% | 1.8% | 0.0% | 0.6% | 2.3% |

*One American citizen living abroad in Switzerland

International Students

Fall 2008 Enrollment By Country of Origin

| | Undergraduate | | First- Professional | | Graduate | | Total | |
|------------------------|----------------------|-------|--------------------------------|-------|-----------------|-------|--------------|-------|
| Bangladesh | | | 1 | 33.3% | | | 1 | 0.8% |
| British Virgin Islands | 1 | 1.7% | | | | | 1 | 0.8% |
| China | 5 | 8.6% | | | 16 | 24.2% | 21 | 16.5% |
| Germany | 1 | 1.7% | | | | | 1 | 0.8% |
| Greece | 1 | 1.7% | | | | | 1 | 0.8% |
| Honduras | 1 | 1.7% | | | | | 1 | 0.8% |
| India | 5 | 8.6% | 2 | 66.7% | 30 | 45.5% | 37 | 29.1% |
| Jordan | | | | | 1 | 1.5% | 1 | 0.8% |
| Kenya | | | | | 1 | 1.5% | 1 | 0.8% |
| Nepal | 1 | 1.7% | | | 1 | 1.5% | 2 | 1.6% |
| Niger | 1 | 1.7% | | | | | 1 | 0.8% |
| Rwanda | 6 | 10.3% | | | | | 6 | 4.7% |
| Saudi Arabia | 35 | 60.3% | | | 16 | 24.2% | 51 | 40.2% |
| Thailand | | | | | 1 | 1.5% | 1 | 0.8% |
| Vietnam | 1 | 1.7% | | | | | 1 | 0.8% |
| Total | 58 | | 3 | | 66 | | 127 | |

First Generation College Students from Entering Freshman Class *

| <u>2005 Cohort</u> | <u>2006 Cohort</u> | <u>2007 Cohort</u> | <u>2008 Cohort</u> |
|---------------------------|---------------------------|---------------------------|---------------------------|
| 35.4% | 31.4% | 29.4% | 29.4% |
| 201 students | 160 students | 173 students | 153 students |

* A first generation student is defined as a student whose parents have never enrolled in college. The data is from responses to the CIRP Freshman Survey administered at Orientation.

Programs Offered

Undergraduate

| | | | |
|----|--------------------------------|-----|----------------------------------|
| BA | Biochemistry | BBA | Business Administration |
| BA | Biology | BBA | Entrepreneurship |
| BA | Chemistry | BS | Applied and Engineering Sciences |
| BA | Communication Studies | BS | Accounting |
| BA | Computer Science | BS | Biochemistry |
| BA | Criminology | BS | Biology |
| BA | Earth & Environmental Sciences | BS | Chemistry |
| BA | Elementary Education | BS | Computer Information Systems |
| BA | English | BS | Computer Science |
| BA | History | BS | Earth & Environmental Sciences |
| BA | Individualized Studies | BS | Electrical Engineering |
| BA | Integrated Media | BS | Engineering Management |
| BA | International Studies | BS | Environmental Engineering |
| BA | Mathematics | BS | Individualized Studies |
| BA | Musical Theatre | BS | Mathematics |
| BA | Philosophy | BS | Mechanical Engineering |
| BA | Political Science | BS | Medical Technology |
| BA | Psychology | BS | Nursing |
| BA | Sociology | BS | Pharmaceutical Sciences |
| BA | Spanish | | |
| BA | Theatre Arts | | |

Graduate

| | |
|-----|-----------------------------------|
| MA | Creative Writing |
| MBA | Business Administration |
| MFA | Creative Writing |
| MS | Mathematics |
| MS | Nursing |
| MS | Electrical Engineering |
| MS | Education |
| MS | Engineering Operations & Strategy |

First-Professional

| | |
|-----|----------|
| DPH | Pharmacy |
|-----|----------|

Doctoral

| | |
|-----|------------------------|
| EDD | Educational Leadership |
|-----|------------------------|

Source: Registrar

Degrees Granted by Department and Major

Undergraduate

| Department | 2003-04 | 2004-05 | 2005-06 | 2006-07 | 2007-08 |
|---|----------------|----------------|----------------|----------------|----------------|
| Department of Biology & Health Sciences | 32 | 31 | 32 | 36 | 25 |
| Biology | 32 | 31 | 32 | 36 | 25 |
| Medical Technology | - | - | - | - | - |
| Department of Chemistry | 4 | 4 | 6 | 3 | 12 |
| Biochemistry | 1 | 3 | 4 | 1 | 6 |
| Chemistry | 3 | 1 | 2 | 2 | 6 |
| Division of Business Administration & Accounting | 59 | 65 | 57 | 65 | 95 |
| Accounting | 17 | 17 | 15 | 20 | 24 |
| Business Administration | 42 | 48 | 41 | 44 | 59 |
| Entrepreneurship | - | - | - | 1 | 12 |
| e-Business | - | - | 1 | - | - |
| Department of Communication Studies | 31 | 27 | 29 | 24 | 32 |
| Integrative Media | - | - | - | 1 | 2 |
| Department of Education | 13 | 38 | 30 | 41 | 32 |
| Division of Engineering & Physics | 24 | 31 | 24 | 23 | 30 |
| Applied & Engineering Sciences | 1 | 1 | 3 | 4 | 1 |
| Electrical Engineering | 6 | 12 | 6 | 8 | 11 |
| Engineering Management | 2 | - | - | 1 | - |
| Mechanical Engineering | 15 | 18 | 15 | 10 | 18 |
| Physics | - | - | - | - | - |
| Department of Environmental Engineering & Earth Sciences | 15 | 11 | 11 | 5 | 5 |
| Environmental Engineering | 6 | 7 | 4 | 4 | 4 |
| Earth & Environmental Sciences | 9 | 4 | 7 | 1 | 1 |
| Division of Humanities | 39 | 35 | 39 | 36 | 42 |
| English | 15 | 19 | 14 | 23 | 14 |
| History | 16 | 15 | 18 | 12 | 22 |
| Philosophy | 6 | - | - | - | 2 |
| Spanish | 2 | 1 | 7 | 1 | 4 |
| Department of Math & Computer Science | 27 | 18 | 20 | 13 | 11 |
| Computer Information Systems | 7 | 5 | 10 | 2 | 3 |
| Computer Science | 6 | 7 | 2 | 5 | 6 |
| Mathematics | 14 | 6 | 8 | 6 | 2 |
| Department of Pharmaceutical Sciences | - | - | - | 1 | 1 |
| Department of Nursing | 18 | 17 | 39 | 43 | 43 |
| Division of Behavioral and Social Sciences | 80 | 60 | 61 | 61 | 80 |
| Criminology | 9 | 15 | 13 | 18 | 20 |
| Economics | - | - | - | - | - |
| International Studies | - | - | 3 | - | 1 |
| Political Science | 5 | 5 | 7 | 5 | 11 |
| Psychology | 59 | 35 | 31 | 34 | 42 |
| Sociology | 9 | 5 | 7 | 4 | 6 |

(Continued on following page)

Degrees Granted by Department and Major (continued)

Undergraduate

| Department | 2003-04 | 2004-05 | 2005-06 | 2006-07 | 2007-08 |
|--|------------|------------|------------|------------|------------|
| Department of Visual & Performing Arts | 7 | 10 | 11 | 13 | 10 |
| Art | - | - | - | - | - |
| Music | - | 2 | - | 1 | - |
| Music Education | 3 | 1 | 1 | 2 | 2 |
| Musical Theatre | 1 | 3 | 1 | 4 | 3 |
| Theatre Arts | 3 | 4 | 9 | 6 | 5 |
| Unspecified | 50 | 57 | 63 | 50 | 64 |
| Individualized Studies | - | 1 | 1 | - | 1 |
| Total | 401 | 405 | 423 | 415 | 485 |

Graduate

| Department | 2003-04 | 2004-05 | 2005-06 | 2006-07 | 2007-08 |
|--|------------|------------|------------|------------|------------|
| Division of Business Administration & Accounting | 40 | 53 | 48 | 52 | 61 |
| Business Administration | 40 | 52 | 48 | 52 | 61 |
| Health Care Admin | - | 1 | - | - | - |
| Creative Writing | - | - | - | 31 | 27 |
| Graduate Teacher Education | 724 | 761 | 754 | 823 | 861 |
| Division of Engineering & Physics | 7 | 3 | 12 | 6 | 18 |
| Electrical Engineering | 7 | 3 | 12 | 6 | 18 |
| Department of Math & Computer Science | 1 | - | - | - | - |
| Mathematics | 1 | - | - | - | - |
| Department of Nursing | 14 | 18 | 15 | 21 | 19 |
| Total | 786 | 835 | 829 | 933 | 986 |

First-Professional

| Department | 2003-04 | 2004-05 | 2005-06 | 2006-07 | 2007-08 |
|------------|---------|---------|---------|---------|---------|
| Pharmacy | 53 | 69 | 73 | 63 | 71 |

Admissions

Full-time Undergraduate Students

| | <u>Fall 2004</u> | <u>Fall 2005</u> | <u>Fall 2006</u> | <u>Fall 2007</u> | <u>Fall 2008</u> |
|--------------------------|-------------------------|-------------------------|-------------------------|-------------------------|-------------------------|
| Applied | 3,052 | 3,209 | 3,400 | 3,066 | 3,176 |
| Freshman | 2,593 | 2,702 | 2,988 | 2,668 | 2,778 |
| Transfer | 459 | 507 | 412 | 398 | 398 |
| Offered Admission | 2,322 | 2,355 | 2,421 | 2,346 | 2,338 |
| Freshman | 2,056 | 2,084 | 2,181 | 2,102 | 2,091 |
| Transfer | 266 | 271 | 240 | 244 | 247 |
| Offer Rate | 76.1% | 73.4% | 71.2% | 76.5% | 73.6% |
| Freshman | 79.3% | 77.1% | 73.0% | 78.8% | 75.3% |
| Transfer | 58.0% | 53.5% | 58.3% | 61.3% | 62.1% |
| Enrolled* | 702 | 720 | 707 | 740 | 698 |
| Freshman | 569 | 583 | 588 | 627 | 578 |
| Transfer | 133 | 137 | 119 | 113 | 120 |
| Yield Rate | 30.2% | 30.6% | 29.2% | 31.5% | 29.9% |
| Freshman | 27.7% | 28.0% | 27.0% | 29.8% | 27.6% |
| Transfer | 50.0% | 50.6% | 49.6% | 46.3% | 48.9% |

*As of the beginning of the Fall semester

Average SAT Scores for First-time Full-time Freshmen

| Wilkes Freshmen | <u>Fall 2004</u> | <u>Fall 2005</u> | <u>Fall 2006</u> | <u>Fall 2007</u> | <u>Fall 2008</u> |
|-------------------------|-------------------------|-------------------------|-------------------------|-------------------------|-------------------------|
| Verbal | 526 | 531 | 518 | 513 | 515 |
| Math | 537 | 543 | 539 | 532 | 530 |
| Total | 1063 | 1074 | 1057 | 1045 | 1045 |
| National Average | | | | | |
| Verbal | 508 | 508 | 503 | 502 | 502 |
| Math | 518 | 520 | 518 | 515 | 515 |
| Total | 1026 | 1028 | 1021 | 1017 | 1017 |

Undergraduate Retention of First-time Full-time Freshmen

| | | Retention Rates | | | | | | | |
|--------------------------------|---|---------------------|---------------------|---------------------|---------------------|---------------------|---------------------|---------------------|---------------------|
| Entering Fall Term* | | 1st Fall | 2nd Fall | 3rd Fall | 4th Fall | 5th Fall | 6th Fall | 7th Fall | 8th Fall |
| 1997 | N | 355 | 270 | 230 | 220 | 55 | 10 | 2 | 1 |
| | % | | 76.1% | 64.8% | 62.0% | 15.5% | 2.8% | 0.6% | 0.3% |
| 1998 | N | 375 | 267 | 224 | 203 | 52 | 11 | 2 | 1 |
| | % | | 71.2% | 59.7% | 54.1% | 13.9% | 2.9% | 0.5% | 0.3% |
| 1999 | N | 377 | 274 | 233 | 230 | 56 | 12 | 2 | 0 |
| | % | | 72.7% | 61.8% | 61.0% | 14.9% | 3.2% | 0.5% | 0.0% |
| 2000 | N | 460 | 343 | 299 | 287 | 77 | 15 | 5 | 3 |
| | % | | 74.6% | 65.0% | 62.4% | 16.7% | 3.3% | 1.1% | 0.7% |
| 2001 | N | 407 | 317 | 277 | 267 | 65 | 7 | 2 | 1 |
| | % | | 77.9% | 68.1% | 65.6% | 16.0% | 1.7% | 0.5% | 0.2% |
| 2002 | N | 471 | 370 | 313 | 296 | 69 | 22 | 6 | |
| | % | | 78.6% | 66.5% | 62.8% | 14.6% | 4.7% | 1.3% | |
| 2003 | N | 510 | 407 | 362 | 336 | 78 | 16 | | |
| | % | | 79.8% | 71.0% | 65.9% | 15.3% | 3.1% | | |
| 2004 | N | 551 | 443 | 390 | 371 | 70 | | | |
| | % | | 80.4% | 70.8% | 67.3% | 12.7% | | | |
| 2005 | N | 566 | 417 | 366 | 348 | | | | |
| | % | | 73.7% | 64.7% | 61.5% | | | | |
| 2006 | N | 571 | 453 | 387 | | | | | |
| | % | | 79.3% | 67.8% | | | | | |
| 2007 | N | 620 | 483 | | | | | | |
| | % | | 77.9% | | | | | | |
| 2008 | N | 561 | | | | | | | |

* As of official census date

Note: Includes retention of students who enter the School of Pharmacy.

Graduation Rates for First-time Full-time Freshmen

| <u>Entering Fall Term*</u> | | <u>1st Fall</u> | <u>Graduation Rates</u> | | | | |
|--------------------------------|---|-----------------|-------------------------|-------------------------|-------------------------|-------------------------|-------------------------|
| | | | <u>within 4 yrs</u> | <u>within 5 yrs</u> | <u>within 6 yrs</u> | <u>within 7 yrs</u> | <u>within 8 yrs</u> |
| 1995 | N | 369 | 117 | 172 | 213 | 214 | 216 |
| | % | | 31.7% | 46.6% | 57.7% | 58.0% | 58.5% |
| 1996 | N | 448 | 154 | 233 | 240 | 242 | 242 |
| | % | | 34.4% | 52.0% | 53.6% | 54.0% | 54.0% |
| 1997 | N | 355 | 162 | 209 | 215 | 217 | 217 |
| | % | | 45.6% | 58.9% | 60.6% | 61.1% | 61.1% |
| 1998 | N | 375 | 148 | 187 | 200 | 201 | 201 |
| | % | | 39.5% | 49.9% | 53.3% | 53.6% | 53.6% |
| 1999 | N | 377 | 166 | 209 | 221 | 223 | 223 |
| | % | | 44.0% | 55.4% | 58.6% | 59.2% | 59.2% |
| 2000 | N | 460 | 194 | 251 | 259 | 264 | 265 |
| | % | | 42.2% | 54.6% | 56.3% | 57.4% | 57.6% |
| 2001 | N | 407 | 198 | 252 | 255 | 256 | |
| | % | | 48.6% | 61.9% | 62.7% | 62.9% | |
| 2002 | N | 471 | 224 | 266 | 272 | | |
| | % | | 47.6% | 56.5% | 57.7% | | |
| 2003 | N | 510 | 254 | 310 | | | |
| | % | | 49.8% | 60.8% | | | |
| 2004 | N | 550** | 288 | | | | |
| | % | | 52.4% | | | | |

*As of official census date

**Cohort adjusted in accordance with IPEDS regulations

Student Credit Hours by Department and Subject

| Undergraduate | 2003-04 | 2004-05 | 2005-06 | 2006-07 | 2007-08 |
|---|----------------|----------------|----------------|----------------|----------------|
| Department of Aerospace Studies | 185 | 139 | 80 | 87 | 96 |
| Aerospace Studies | 185 | 139 | 80 | 87 | 96 |
| Department of Biology & Health Sciences | 3,602 | 4,020 | 4,004 | 4,002 | 4,179 |
| Biology | 3,596 | 4,014 | 3,998 | 3,996 | 4,176 |
| Marine Science | 6 | 6 | 6 | 6 | 3 |
| Department of Chemistry | 3,261 | 3,446 | 3,566 | 3,563 | 3,263 |
| Chemistry | 3,261 | 3,446 | 3,566 | 3,563 | 3,263 |
| Division of Business Administration & Accounting | 4,777 | 5,712 | 6,948 | 7,058 | 7,506 |
| Accounting | 1,041 | 1,257 | 1,347 | 1,407 | 1,539 |
| Business Administration | 3,736 | 4,236 | 5,089 | 4,839 | 4,780 |
| Entrepreneurship | - | 92 | 231 | 378 | 556 |
| Personal & Professional Development | - | 127 | 281 | 434 | 631 |
| Department of Communication Studies | 3,037 | 3,376 | 3,295 | 3,188 | 3,251 |
| Communications | 3,037 | 3,376 | 3,295 | 3,188 | 3,251 |
| Department of Education | 4,095 | 3,994 | 3,221 | 3,094 | 2,666 |
| Education | 3,867 | 3,727 | 3,035 | 2,974 | 2,498 |
| Special Education | 228 | 267 | 186 | 120 | 168 |
| Division of Engineering & Physics | 3,814 | 3,765 | 3,986 | 4,268 | 4,836 |
| Electrical Engineering | 779 | 614 | 635 | 703 | 704 |
| Engineering | 288 | 507 | 599 | 567 | 778 |
| Engineering Management | 172 | 134 | 96 | 156 | 119 |
| Materials Engineering | 1 | - | - | - | - |
| Mechanical Engineering | 1,184 | 1,039 | 1,050 | 1,197 | 1,292 |
| Physics | 1,390 | 1,471 | 1,606 | 1,645 | 1,943 |
| Dept. of Environmental Engr. & Earth Sciences | 1,433 | 1,284 | 1,393 | 1,497 | 1,515 |
| Earth & Environmental Sciences | 1,127 | 1,003 | 1,161 | 1,248 | 1,236 |
| Environmental Engineering | 306 | 281 | 232 | 249 | 279 |
| Division of Humanities | 9,981 | 9,826 | 9,731 | 9,922 | 10,340 |
| English | 4,941 | 5,101 | 5,039 | 5,138 | 5,199 |
| French | 222 | 153 | 144 | 144 | 177 |
| Foreign Language | 4 | - | - | - | - |
| German | - | - | - | - | - |
| Russian | - | - | - | - | - |
| Spanish | 681 | 900 | 1,005 | 1,008 | 1,144 |
| History | 2,932 | 2,550 | 2,577 | 2,673 | 2,950 |
| Philosophy | 1,201 | 1,122 | 966 | 959 | 870 |
| Integrative Media | - | - | 66 | 202 | 306 |
| Interdisciplinary | 1,881 | 2,110 | 2,346 | 2,275 | 2,515 |
| Freshman Foundations | 1,608 | 1,728 | 1,812 | 1,767 | 1,929 |
| Interdisciplinary Core Studies | - | - | - | - | - |
| Cooperative Education | 157 | 192 | 243 | 259 | 251 |
| Career Planning | 116 | 123 | 138 | 153 | 170 |
| Study Travel Experience | - | 3 | 36 | 3 | 60 |
| Women's Studies | - | 64 | 117 | 93 | 105 |

(Continued on following page)

Student Credit Hours by Department & Subject (continued)

| Undergraduate | 2003-04 | 2004-05 | 2005-06 | 2006-07 | 2007-08 |
|---|----------------|----------------|----------------|----------------|-----------------|
| Department of Math & Computer Science | 6,531 | 6,468 | 6,362 | 6,145 | 6,722 |
| Computer Science | 2,225 | 2,323 | 2,180 | 1,886 | 2,289 |
| Mathematics | 4,306 | 4,145 | 4,182 | 4,259 | 4,433 |
| Department of Nursing | 1,425 | 2,005 | 2,882 | 3,431 | 3,951 |
| School of Pharmacy | 4,460 | 4,493 | 4,763 | 4,862 | 4,930 |
| Pharmacy | 4,460 | 4,493 | 4,715 | 4,780 | 4,856 |
| Pharmaceutical Sciences | - | - | 48 | 82 | 74 |
| Division of Behavioral & Social Sciences | 9,084 | 9,248 | 9,830 | 10,194 | 10,897 |
| Anthropology | 562 | 600 | 600 | 702 | 861 |
| Economics | 849 | 1,036 | 1,038 | 1,014 | 1,068 |
| Political Science | 1,050 | 1,227 | 1,390 | 1,557 | 1,708 |
| Psychology | 4,117 | 3,844 | 4,316 | 4,255 | 4,484 |
| Sociology | 2,506 | 2,541 | 2,486 | 2,666 | 2,776 |
| Department of Visual & Performing Arts | 3,210 | 3,852 | 3,761 | 3,867 | 3,866.5 |
| Art | 790 | 865 | 927 | 1,017 | 1,179 |
| Dance | 616 | 792 | 804 | 793 | 822 |
| Music | 969 | 1,237 | 1,190.5 | 1,168 | 1,061.5 |
| Music Education | 72 | 31 | 21.5 | 14 | 5 |
| Theatre Arts | 763 | 927 | 818 | 875 | 799 |
| Total | 60,776 | 63,737 | 66,234 | 67,655 | 70,839.5 |

| Graduate | 2003-04 | 2004-05 | 2005-06 | 2006-07 | 2007-08 |
|---|----------------|----------------|----------------|----------------|----------------|
| Department of Biology & Health Sciences | 79 | 38 | 18 | 31 | 9 |
| Department of Chemistry | 21 | 15 | 21 | 12 | 15 |
| Division of Business Administration & Accounting | 1,904 | 2,307 | 2,529 | 2,619 | 2,904 |
| Business Administration | 1,904 | 2,307 | 2,259 | 2,619 | 2,904 |
| Graduate Teacher Education | 29,873 | 29,829 | 30,183 | 34,459 | 40,188 |
| Education | 29,501 | 29,265 | 29,637 | 33,070 | 34,065 |
| Special Education | 372 | 564 | 546 | 390 | 468 |
| Educational Advanced Methods | - | - | - | 741 | 5,175 |
| School Business Leadership | - | - | - | 258 | 480 |
| Division of Engineering & Physics | 288 | 317 | 473 | 555 | 661 |
| Electrical Engineering | 270 | 314 | 443 | 447 | 466 |
| Engineering Operations & Strategy | - | - | 21 | 90 | 189 |
| Physics | 18 | 3 | 9 | 18 | 6 |
| Creative Writing | - | 210 | 794 | 1,016 | 1,555 |
| Division of Humanities | 72 | 81 | 78 | 84 | 54 |
| English | 39 | 45 | 54 | 57 | 30 |
| History | 33 | 36 | 24 | 27 | 24 |
| Dept. of Environmental Engr. and Earth Sciences | 9 | - | - | 2 | 14 |
| Earth & Environmental Sciences | 9 | - | - | 2 | 14 |
| Department of Math & Computer Science | 32 | 45 | 102 | 108 | 32 |
| Computer Science | - | 6 | 9 | - | 12 |
| Mathematics | 32 | 39 | 93 | 108 | 20 |
| Department of Nursing | 741 | 707 | 964 | 1,223 | 1,202 |
| School of Pharmacy | 4,222 | 4,691 | 4,625 | 4,493 | 4,581 |
| Total | 37,241 | 38,240 | 39,787 | 44,602 | 51,215 |

Student Clubs

The Student Development Office enhances student life by offering leadership programs, experiential education opportunities, and a variety of extracurricular and social activities for students. A few of the programs offered include the Cultural Series and Experiential Adventure Series, which both provide meaningful out of the classroom learning experiences. The Cultural Series introduces students to the world of art and performance by providing several opportunities each semester to experience visual art, music, theater and dance both locally and in larger Metropolitan areas such as New York City, Philadelphia and Washington D.C. The Experiential Adventure program is an alternative learning experience designed to challenge students to engage in physically demanding activities that emphasize wellness and provide practical leadership tools and lessons on teamwork. Students will have the opportunity to sign up for adventures such as white water rafting, skydiving, hiking and mountain biking.

The Student Development Office also coordinates a weekend entertainment series, which gives students a variety of entertainment options to choose from each weekend. A few of the weekly attractions include indoor rock climbing, ice-skating, skiing, bowling, and movie tickets. Several of the University's clubs are listed below.

| | | |
|--------------------------------|---------------------------------|------------------------------------|
| Air Force ROTC | Green Club | Rock Climbing Club |
| Air & Waste Mgt. Assn. | History Club | Rowing Club |
| Alternative Spring Break | IEEE Club | Running Club |
| Amnicola | Indian Cultural Association | SAVE Club |
| Anime Club | Inter-Resident Hall Council | SIFE (Students In Free Enterprise) |
| ASME | Islamic Interest Society | Ski Club |
| BACCHUS | Lacrosse Club | Society for the Advancement SAM |
| The Beacon | Marketing Club | Society of Automotive Engineers |
| Biology Club | MANUSCRIPT | Society of Women Engineers |
| Cheerleading | Math Club | Sociology Club |
| Chemistry Club | MBA Student Association | Spanish Club |
| Choral Club | MENC Music Club | Step Club |
| Christian Fellowship Club | Multicultural Student Coalition | Student Alumni Association |
| Circle K International | Nursing Student Organization | Student Health Advisory |
| College Democrats Club | Off-Campus Council | Student Political Action Forum |
| Comic Book Club | PA Pharmacists Association | Television Club |
| Communications Club | Pep Band | Ultimate Frisbee |
| Commuter Council | Personal Finance Club | Wilkes in the World |
| Cycling Club | Pre-Law Club | Wise Up |
| Dance Team | Pre-Pharmacy Club | |
| Debate Society | Pre-Professional Health Club | |
| Delta Epsilon Chi | Programming Board | |
| Earth and Envir. Sciences Club | PSEA Education Club | |
| Environmental Club | Psychology Club | |
| Equestrian Club | Public Affairs Club | |
| Fencing Club | Racquetball Club | |
| Free Spirit Club | Robotics Club | |

Leadership Institute

The Student Affairs Leadership Institute, which functions as the coordinating body for all Student Affairs leadership programs, provides continuous opportunities to enhance the leadership skills of students and members of the community. By offering a variety of leadership programs that promote self-awareness, problem solving, service learning and multicultural issues, the Institute empowers students to explore their own personal leadership style. A few of the programs and services offered by the Institute include the Emerging Leaders Program, a Leadership Certificate Program, Intercollegiate Leadership Wilkes-Barre, National Society of Leadership & Success Speaker Series, Sigma Alpha Pi Honor Society, Leadership Assessments and a Step-Up Rock Wall and Ropes courses.

The Leadership Development Center, which is one of the elements of the Institute, is located on the first floor of the Henry Student Center. The center contains a leadership library and provides space for small group activities and leadership training.

Source: Student Affairs

University College Programs and Services

| | |
|--------------------------|--|
| ACT 101 Program | A program funded by the Pennsylvania Department of Education to provide academic support and guidance for eligible students. |
| Advising Services | University College coordinates services for faculty and students to support the advising process. This includes services for “deciding” students and for those who intend to apply for entrance into the Pharmacy major. |
| Career Services | The Office of Career Services offers comprehensive career education and support for professional career development for the Wilkes community. |
| Disability Services | The University College Learning Center (UCLC) coordinates the University’s policies and support programs for students with disabilities. |
| First Year Program | A program for first-year students who may benefit from a guided transition to college studies. |
| Learning Skills Program | The UCLC offers workshops and presentations designed to support student success. |
| Supplemental Instruction | Supplemental instruction is available for a number of courses for which review sessions have been deemed particularly beneficial. |
| Tutorial Services | The UCLC offers free assistance to all students enrolled at Wilkes. Tutoring is available in most courses at the introductory-level and in other courses as resources permit. |
| Upward Bound Program | This federally-funded program offers a comprehensive educational experience for financially-eligible high school students who are first-generation college-bound students. |

Source: University College

Community Service

A liberal arts education teaches students to look at the world as a whole, to begin making connections between things like interpersonal conflict and international relations, between education and poverty, between thinking about themselves to thinking about the “me in context.” Every year, the students of Wilkes partner with numerous organizations including Habitat for Humanity, the American Red Cross, the Commission on Economic Opportunity (CEO), REACH Inc., and the McGlynn Learning Center. Students extend Wilkes’ spirit of service beyond local borders by volunteering in Philadelphia in the fall, and traveling domestically and internationally to serve during Spring Break. Most recently, Wilkes traveled to St. Bernard’s Parish, Louisiana to aid in Hurricane Katrina recovery efforts and San Ignacio, Belize to construct a library for a local school. In spring 2009 students will travel to St. Bernard’s Parish, Louisiana to work with the Community Center and animal shelter. Another group of students will be traveling to the Dominican Republic to work with Orphanage Outreach. In extraordinary ways, Wilkes students are leading, mentoring, and learning through service.

Source: Community Service

Career Placement of 2007 Graduates

| | |
|--|-----|
| Employed Full-time | 67% |
| Graduate/Professional School, Full-time | 26% |
| Part-time Graduate School with Part-time Work | 4% |
| Military Career | 2% |
| Seeking Full-time Employment or Not Employed by Choice | 1% |

Source: Career Services

Athletics

Wilkes sponsors an active intramural sports program as well as intercollegiate competition in 16 varsity sports. Varsity teams compete at the Division III level. The University is a member of the National Collegiate Athletic Association (NCAA), the Middle Atlantic States Collegiate Athletic Conference, Middle Atlantic Conference (MAC), the Freedom Conference, and the Eastern Collegiate Athletic Conference (ECAC). There were 348 student athletes on the roster for the 2007-08 season.

Varsity Programs

Men

Baseball
Basketball
Cross-Country
Football
Golf
Soccer
Tennis
Wrestling

Women

Basketball
Field Hockey
Cross-Country
Lacrosse
Soccer
Softball
Tennis
Volleyball

Athletic Department Statistics 2007-08

| | <u>Wins</u> | <u>Losses</u> | <u>Ties</u> |
|--------------------|--------------------|----------------------|--------------------|
| Baseball | 24 | 11 | |
| Men's Basketball | 13 | 12 | |
| Women's Basketball | 2 | 23 | |
| Field Hockey | 8 | 11 | |
| Football | 4 | 6 | |
| Golf | 0 | 2 | |
| Lacrosse | 6 | 10 | |
| Men's Soccer | 11 | 6 | 2 |
| Women's Soccer | 9 | 9 | 1 |
| Softball | 26 | 14 | |
| Men's Tennis | 16 | 2 | |
| Women's Tennis | 18 | 2 | |
| Volleyball | 12 | 17 | |
| Wrestling | 19 | 7 | 1 |

Athletic Conference Participation

Freedom Conference Playoff Champions

Men's Tennis and Women's Tennis

Freedom Conference Playoff Appearances

Field Hockey, Men's Soccer, Women's Soccer, Men's Tennis, Women's Tennis

NCAA Championship Appearances

Men's Tennis, Women's Tennis, Wrestling

Metro Conference Playoff Appearance

Wrestling

FACULTY and STAFF

Staff by Category and Gender

| Fall 2008 | | | | | | | Fall 2007 |
|------------------------|------------|-----------|----------------------|-----------|-----------|------------|------------|
| | Admin. | Clerical | Maint./ Custodial | Security | Coach | Total | Total |
| Full-time Staff | | | | | | | |
| Male | 72 | 1 | 32 | 8 | 7 | 120 | 113 |
| Female | 118 | 51 | 13 | 5 | 3 | 190 | 181 |
| Total | 190 | 52 | 45 | 13 | 10 | 310 | 294 |
| Part-time Staff | | | | | | | |
| Male | 18 | 0 | 2 | 11 | 7 | 38 | 29 |
| Female | 19 | 4 | 0 | 0 | 3 | 26 | 33 |
| Total | 37 | 4 | 2 | 11 | 10 | 64 | 62 |
| Total Staff | | | | | | | |
| Male | 90 | 1 | 34 | 19 | 14 | 158 | 142 |
| Female | 137 | 55 | 13 | 5 | 6 | 216 | 214 |
| Total | 227 | 56 | 47 | 24 | 20 | 374 | 356 |

Faculty by Gender and Tenure Status

| Full-time Faculty | Fall 2008 | | | Fall 2007 |
|--------------------------------|------------------|---------------|--------------|------------------|
| | Male | Female | Total | Total |
| Professors | 26 | 5 | 31 | 28 |
| Associate Professors | 22 | 21 | 43 | 45 |
| Assistant Professors* | 26 | 36 | 62 | 54 |
| Instructors** | 1 | 1 | 2 | 3 |
| Visiting*** | 5 | 4 | 9 | 7 |
| Total Full-time Faculty | 80 | 67 | 147 | 137 |

* Includes one $\frac{3}{4}$ Asst. Professors and two $\frac{1}{2}$ Asst. Professors

** Includes one $\frac{3}{4}$ instructor

***Includes two $\frac{3}{4}$ Visiting Instructors, two Visiting Instructors, four Visiting Asst. Professors and one Visiting $\frac{3}{4}$ Asst. Professor

| | Fall 2008 | | | Fall 2007 |
|--|------------------|---------------|--------------|------------------|
| | Male | Female | Total | Total |
| Tenured | | | | |
| Professor | 26 | 5 | 31 | 28 |
| Associate Professor | 22 | 21 | 43 | 45 |
| Assistant Professor | 1 | 0 | 1 | 1 |
| Total Tenured | 49 | 26 | 75 | 74 |
| Tenure Track | | | | |
| Professor | 0 | 0 | 0 | 0 |
| Associate Professor | 0 | 0 | 0 | 0 |
| Assistant Professor | 25 | 33 | 58 | 50 |
| Total Tenure Track | 25 | 33 | 58 | 50 |
| Not on Tenure Track | | | | |
| Assistant Professor $\frac{3}{4}$ - time | 0 | 1 | 1 | 1 |
| Assistant Professor $\frac{1}{2}$ - time | 0 | 2 | 2 | 2 |
| Instructor | 0 | 1 | 1 | 3 |
| Instructor $\frac{3}{4}$ -time | 1 | 0 | 1 | 0 |
| Total Not on Tenure Track | 1 | 4 | 5 | 6 |
| Visiting | | | | |
| Assistant Professor | 2 | 2 | 4 | 2 |
| Assistant Professor $\frac{3}{4}$ - time | 1 | 0 | 1 | 1 |
| Instructor | 1 | 1 | 2 | 1 |
| Instructor $\frac{3}{4}$ - time | 1 | 1 | 2 | 3 |
| Total Visiting | 5 | 4 | 9 | 7 |
| Total Full-time Faculty | 80 | 67 | 147 | 137 |

| Part-time Faculty | Fall 2008 | | | Fall 2007 |
|--------------------------------|------------------|---------------|--------------|------------------|
| | Male | Female | Total | Total |
| Not on Tenure Track | | | | |
| Undergraduate | 49 | 49 | 98 | 101 |
| Graduate | 102 | 73 | 175 | 159 |
| ESL | 0 | 5 | 5 | 5 |
| Music Conservatory | 4 | 1 | 5 | 11 |
| Total Part-time Faculty | 155 | 128 | 283 | 276 |

Full-time Faculty by Department

| Department | Prof. | Assoc. Prof. | Asst. Prof. | Instr. | Visiting | Total | Tenured | On Tenure Track |
|----------------------------------|-----------|--------------|-------------|----------|----------|------------|-----------|-----------------|
| Biology & Health Sciences | 3 | 2 | 4 | 0 | 0 | 9 | 5 | 4 |
| Behavioral & Social Sciences | 5 | 4 | 5 | 0 | 0 | 14 | 9 | 5 |
| Business Division | 4 | 2 | 8 | 0 | 0 | 14 | 6 | 8 |
| Chemistry***** | 0 | 3 | 3 | 0 | 1 | 7 | 3 | 3 |
| Communication Studies***** | 2 | 2 | 1 | 0 | 1 | 6 | 4 | 1 |
| Education**** | 0 | 2 | 2 | 0 | 1 | 5 | 2 | 1 |
| Engineering & Physics***** | 7 | 0 | 1 | 1 | 2 | 11 | 8 | 0 |
| Environmental Engr. & Earth Sci. | 3 | 3 | 0 | 0 | 0 | 6 | 6 | 0 |
| Graduate Teacher Education | 0 | 2 | 2 | 0 | 0 | 4 | 2 | 2 |
| Humanities** | 1 | 5 | 8 | 0 | 3 | 17 | 6 | 8 |
| Math & Computer Science*** | 3 | 6 | 1 | 0 | 1 | 11 | 9 | 1 |
| Nursing | 0 | 4 | 10 | 0 | 0 | 14 | 4 | 10 |
| Pharmacy* | 3 | 5 | 15 | 1 | 0 | 24 | 8 | 13 |
| Visual & Performing Arts | 0 | 3 | 2 | 0 | 0 | 5 | 3 | 2 |
| Total | 31 | 43 | 62 | 2 | 9 | 147 | 75 | 58 |

* Includes two ½- time Asst. Professors

** Includes one Visiting Asst. Prof., one Visiting Instructor and one ¾ Visiting Instructor

*** Includes one ¾ Visiting Asst. Professor

**** Includes one ¾ Asst. Professor and one ¾ Visiting Instructor

***** Includes one Visiting Instructor

***** Includes one ¾ Instructor and two Visiting Asst. Professor

***** Includes one Visiting Asst. Professor

Full-time Faculty Degrees

| Full-time Faculty with Doctorates | Male | | Female | | Total | |
|-----------------------------------|-----------|------------|-----------|------------|------------|------------|
| | N | % | N | % | N | % |
| Professors | 26 | 100% | 5 | 100% | 31 | 100% |
| Associate Professors | 20 | 91% | 19 | 90% | 39 | 91% |
| Assistant Professors | 24 | 92% | 26 | 72% | 50 | 81% |
| Instructors | 0 | 0% | 1 | 100% | 1 | 50% |
| Visiting | 3 | 60% | 2 | 50% | 5 | 56% |
| Total | 73 | 91% | 53 | 79% | 126 | 86% |

| Full-time Faculty with Terminal Degrees* | Male | | Female | | Total | |
|--|-----------|------------|-----------|------------|------------|------------|
| | N | % | N | % | N | % |
| Professors | 26 | 100% | 5 | 100% | 31 | 100% |
| Associate Professors | 21 | 95% | 21 | 100% | 42 | 98% |
| Assistant Professors | 24 | 92% | 27 | 75% | 51 | 82% |
| Instructors | 0 | 0% | 1 | 100% | 1 | 50% |
| Visiting | 3 | 60% | 2 | 50% | 5 | 56% |
| Total | 74 | 93% | 56 | 84% | 130 | 88% |

*Terminal degrees are Master of Business Administration/CPA and Master of Fine Arts.

Faculty and Staff by Ethnicity

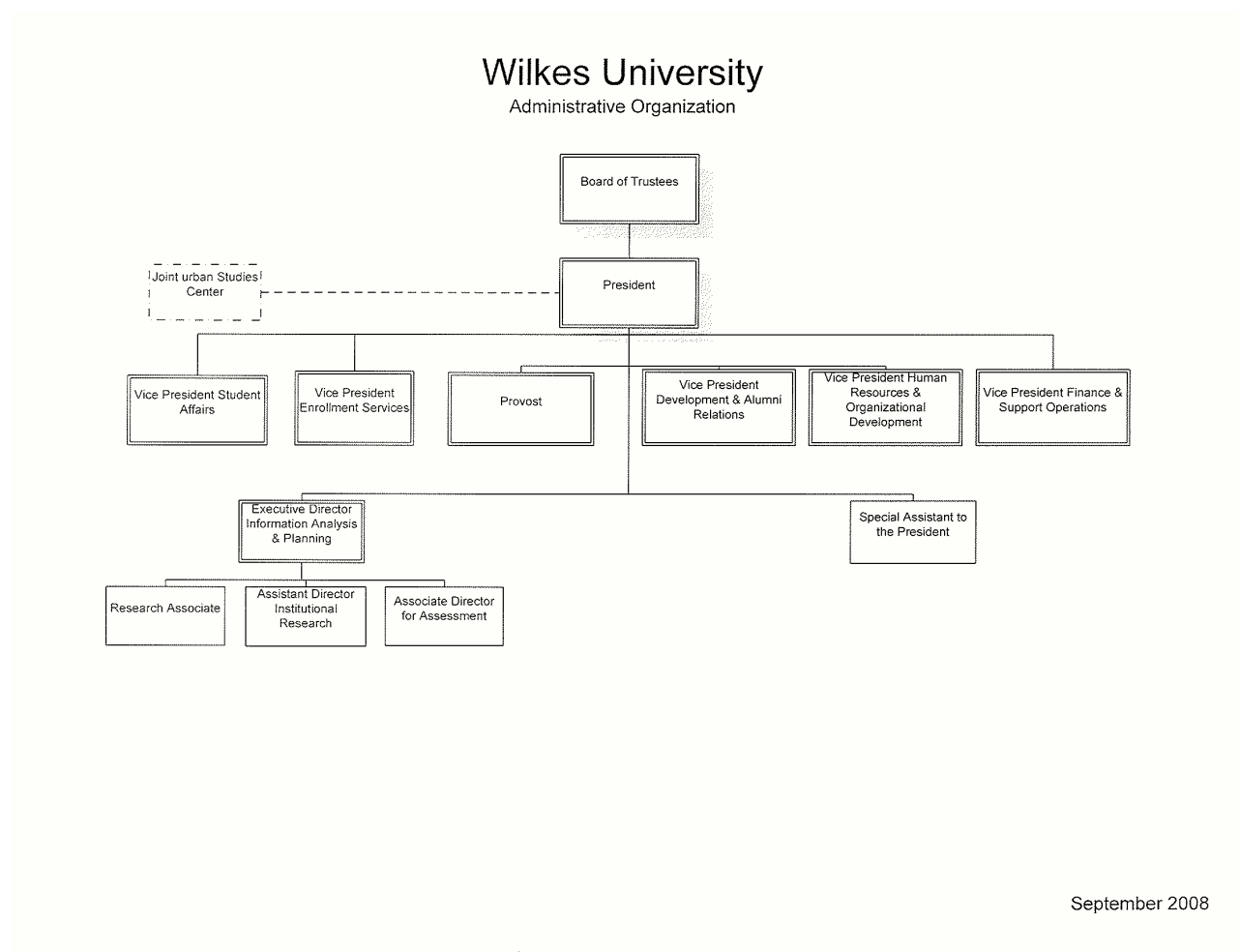
| Faculty | Full-time | | Part-Time | |
|-------------------------|------------------|-------|------------------|-------|
| Caucasian | 127 | 86.4% | 263 | 92.9% |
| American Indian/Alaskan | 1 | 0.7% | 2 | 0.7% |
| Asian/Pacific Islander | 6 | 4.1% | 3 | 1.1% |
| Black | 2 | 1.4% | 2 | 0.7% |
| Hispanic | 1 | 0.7% | 3 | 1.1% |
| Nonresident Alien | 4 | 2.7% | 0 | 0.0% |
| Unspecified | 6 | 4.1% | 10 | 3.5% |
| Total Faculty | 147 | | 283 | |

| Staff | Full-time | | Part-Time | |
|-------------------------|------------------|-------|------------------|-------|
| Caucasian | 287 | 92.6% | 57 | 89.1% |
| American Indian/Alaskan | 2 | 0.6% | 0 | 0.0% |
| Asian/Pacific Islander | 2 | 0.6% | 0 | 0.0% |
| Black | 9 | 2.9% | 1 | 1.6% |
| Hispanic | 4 | 1.3% | 1 | 1.6% |
| Nonresident Alien | 0 | 0.0% | 0 | 0.0% |
| Unspecified | 6 | 1.9% | 5 | 7.8% |
| Total Staff | 310 | | 64 | |

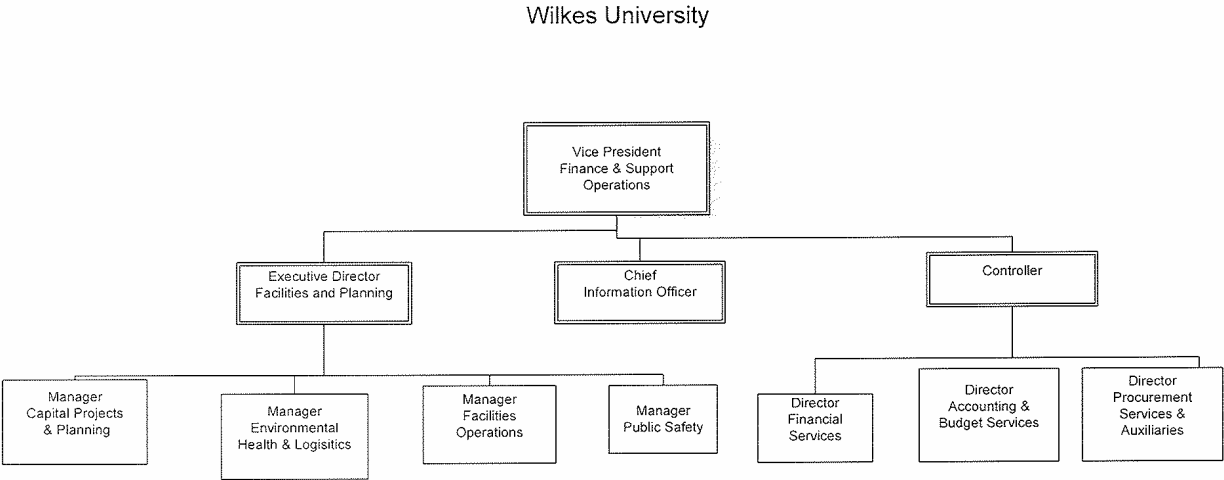
| Total University | Full-time | | Part-Time | |
|-------------------------|------------------|-------|------------------|-------|
| Caucasian | 414 | 90.6% | 320 | 92.2% |
| American Indian/Alaskan | 3 | 0.7% | 2 | 0.6% |
| Asian/Pacific Islander | 8 | 1.8% | 3 | 0.9% |
| Black | 11 | 2.4% | 3 | 0.9% |
| Hispanic | 5 | 1.1% | 4 | 1.2% |
| Nonresident Alien | 4 | 0.9% | 0 | 0.0% |
| Unspecified | 12 | 2.6% | 15 | 4.3% |
| Total University | 457 | | 347 | |

ORGANIZATIONAL CHARTS

Administrative

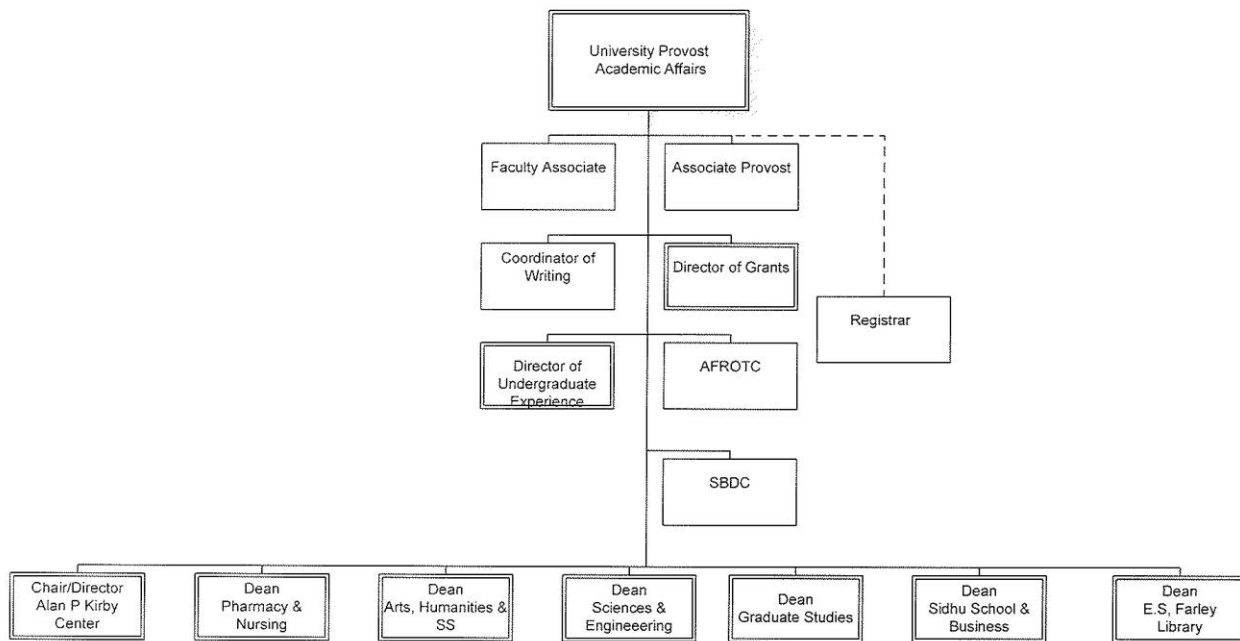


Finance and Support Operations



Academic Affairs

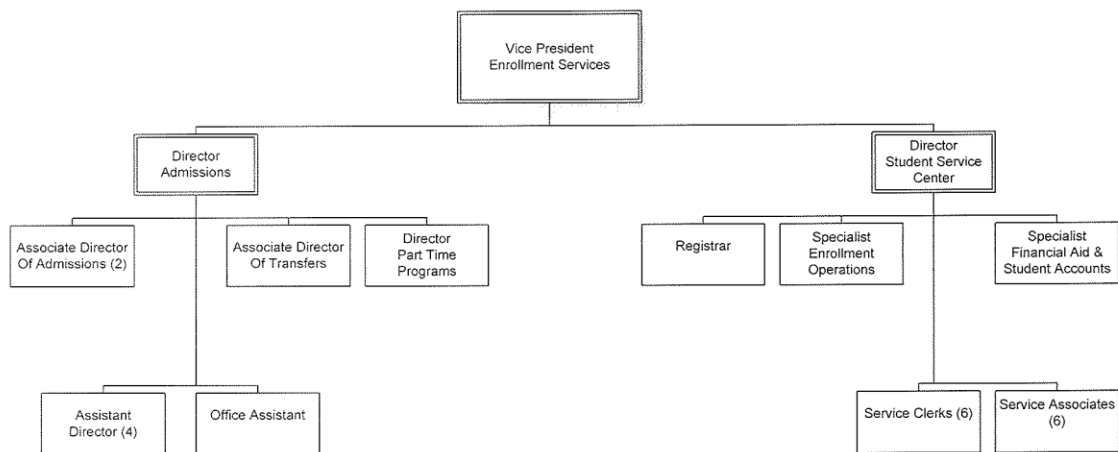
Wilkes University



September 2008

Enrollment Services

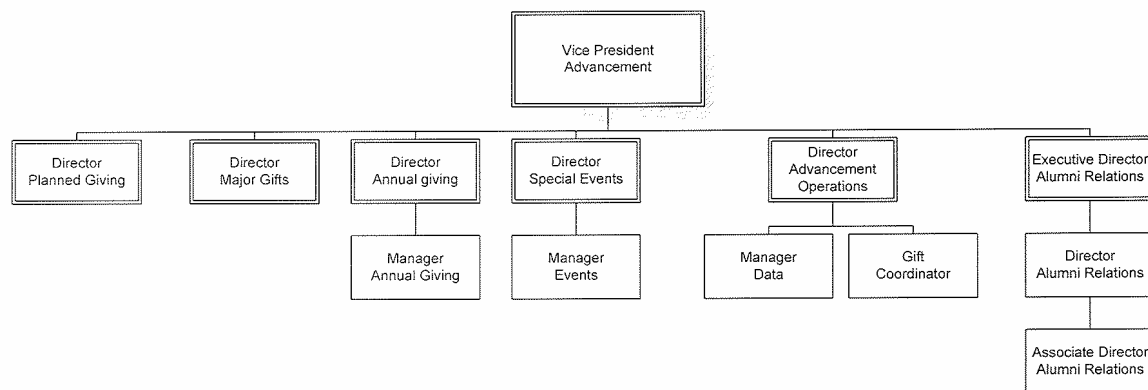
Wilkes University



September 2008

Advancement

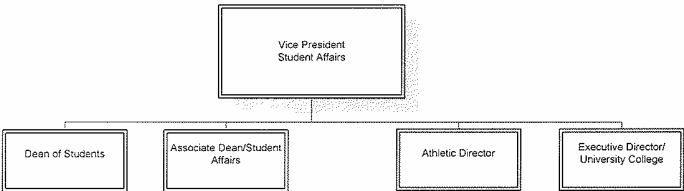
Wilkes University



September 2008

Student Affairs

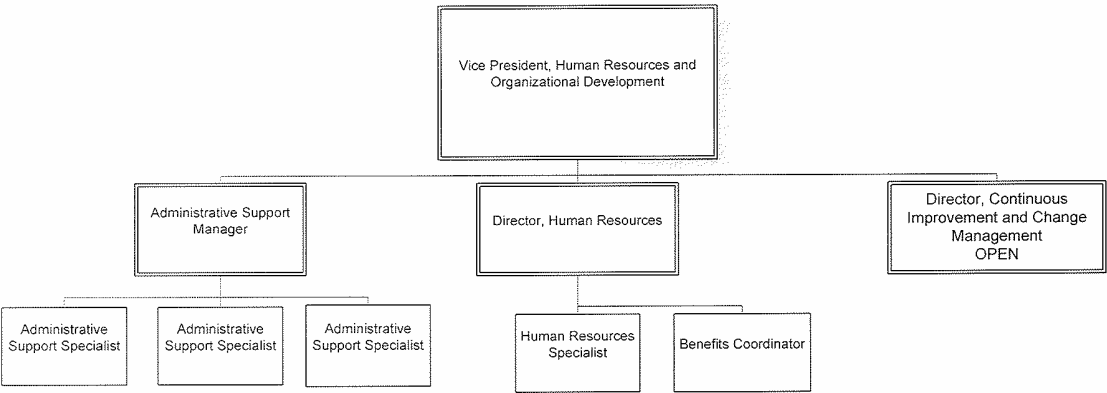
Wilkes University
Student Affairs



September 2008

Human Resources and Organizational Development

Wilkes University



September 2008

FINANCES

Statement of Activities

| | FY 2007 | FY 2008 |
|---|----------------------|----------------------|
| | AMOUNT | AMOUNT |
| REVENUES AND OTHER SUPPORT | | |
| Tuition and Fees | \$ 66,807,877 | \$ 74,734,827 |
| Less Scholarship Aid | (20,519,152) | (22,895,089) |
| NET TUITION & FEES | 46,288,725 | 51,839,738 |
| Government Grants and Contracts | 2,665,695 | 2,783,585 |
| Private Gifts, Grants & Contracts | 5,357,132 | 2,173,933 |
| Sales and Services of Auxiliary Enterprises | 9,716,912 | 10,436,404 |
| Income from Interest and Dividends | 991,104 | 753,181 |
| Other Additions | 1,057,938 | 1,112,816 |
| Endowment Income Designated for Current Operations | 858,000 | 1,300,000 |
| TOTAL REVENUES AND OTHER SUPPORT | \$ 66,935,506 | \$ 70,399,657 |
| EXPENDITURES | | |
| Instruction | \$ 28,343,043 | \$ 32,033,947 |
| Research | 1,127,915 | 1,013,103 |
| Public Service | 1,257,442 | 1,123,499 |
| Academic Support | 5,134,062 | 4,761,126 |
| Student Services | 9,165,733 | 9,471,075 |
| Institutional Support | 16,225,093 | 13,654,180 |
| Auxiliary Enterprises | 6,160,563 | 6,773,231 |
| TOTAL EXPENSES | \$ 67,413,851 | \$ 68,830,161 |
| Increase in Net Assets from Operating Activities | \$ (478,345) | \$ 1,569,496 |
| NON-OPERATING INCOME (EXPENSES) | | |
| Private Gifts and Grants | \$ 875,551 | 4,162,902 |
| Net Investment Return After Application of Spending Policy | 5,134,521 | (2,002,000) |
| Net Realized and Unrealized Gain(Loss) on Derivative Instruments | (557,366) | - |
| Changes in Liabilities Under Split Interest Agreements and Perpetual Trusts | 677,279 | (152,703) |
| Increase(Decrease) in Net Assets from Non-Operating Activities | \$ 5,651,640 | \$ 2,008,199 |
| Cumulative Effect of a Change in Accounting Principal | - | 35,817 |
| Change in Net Assets Due to Restatement | (4,005,861) | - |
| TOTAL CHANGE IN NET ASSETS | \$ 1,645,779 | \$ 3,613,512 |
| Net Assets, Beginning of Year | \$ 71,717,543 | \$ 73,363,322 |
| Net Assets, End of Year | \$ 73,363,322 | \$ 76,976,834 |

Source: Controller's Office

Endowment and Other Long-Term Investments

(At fair market value)

| | <u>5/31/2007</u> | <u>5/31/2008</u> |
|---|---------------------------------|---------------------------------|
| Endowment and Similar Funds: | | |
| Cash and cash equivalents | \$ - | \$ 3,843,561 |
| Fixed income investments | 4,331,640 | 6,103,848 |
| Common, preferred stocks and equity funds | 33,375,055 | 22,506,023 |
| Real estate investment trust | 40,888 | - |
| Alternative investments | <u>4,921,604</u> | <u>6,390,471</u> |
| Total | <u>\$ 42,669,187</u> | <u>\$ 38,843,903</u> |
| Annuity and Life Income Funds: | | |
| Cash and cash equivalents | \$ 117,961 | \$ 44,178 |
| Bonds, notes and bond funds | 268,789 | 171,405 |
| Common, preferred stocks and equity funds | 1,493,925 | 497,874 |
| Total | <u>\$ 1,880,675</u> | <u>\$ 713,457</u> |
| Total Endowment and Similar Funds | <u>\$ 44,549,862</u> | <u>\$ 39,557,360</u> |
| Investments: | | |
| Current Funds: | | |
| Cash and cash equivalents | \$ 27,102 | \$ 46,018 |
| Certificates of deposit | 239,510 | - |
| Bonds, notes and bond funds | 240,166 | 232,553 |
| Common, preferred stocks and equity funds | 446,763 | 422,635 |
| Total Investments | <u>\$ 953,541</u> | <u>\$ 701,206</u> |
| Deposits with Bond Trustee: | | |
| Cash and cash equivalents | \$ 2,387,106 | \$ 2,180,782 |
| Total Deposits | <u>\$ 2,387,106</u> | <u>\$ 2,180,782</u> |
| Total Endowment, Investments and Similar Funds | <u>\$ 47,890,509</u> | <u>\$ 42,439,348</u> |

Source: Controller's Office

Tuition, Fees, Room and Board Charges

| | | <u>FY2006</u> | <u>FY2007</u> | <u>FY2008</u> | <u>FY2009</u> |
|---|--|----------------------|----------------------|----------------------|----------------------|
| FULL-TIME UNDERGRADUATE (Annual): | | | | | |
| Tuition: | Full-time Tuition (12-18 Credits per semester) | \$20,592 | \$21,830 | \$22,820 | \$23,850 |
| Fees: | General University Fee | \$614 | \$650 | \$680 | \$710 |
| | Student Activity Fee | 200 | 210 | 220 | 230 |
| | Technology Fee | 160 | 200 | 250 | 270 |
| | Student Union Fee | 40 | 40 | 50 | 50 |
| | Recreation Fee | 40 | 60 | 60 | 60 |
| | Total Fees | \$1,054 | \$1,160 | \$1,260 | \$1,320 |
| Total Tuition & Fees | | \$21,646 | \$22,990 | \$24,080 | \$25,170 |
| PART-TIME (Per Credit Hour) | | | | | |
| | Tuition | \$569 | \$605 | \$630 | \$660 |
| | General University Fee | 28 | 30 | 30 | 30 |
| | Technology Fee | 15 | 20 | 25 | 30 |
| | Total Cost | \$612 | \$655 | \$685 | \$720 |
| FULL-TIME FIRST PROFESSIONAL (Annual): | | | | | |
| Tuition: | Full-time Tuition (12-18 Credits per semester) | \$21,892 | \$23,200 | \$24,250 | \$25,350 |
| Fees: | General University Fee | \$614 | \$650 | \$680 | \$710 |
| | Pharmacy Clerkship Fee | 400 | 420 | 440 | 840 |
| | Student Activity Fee | 200 | 210 | 220 | 230 |
| | Technology Fee | 160 | 200 | 250 | 270 |
| | Student Union Fee | 40 | 40 | 50 | 50 |
| | Recreation Fee | 40 | 60 | 60 | 60 |
| | Total Fees | \$1,454 | \$1,580 | \$1,700 | \$2,160 |
| Total Tuition & Fees | | \$23,346 | \$24,780 | \$25,950 | \$27,510 |
| Room: | Residence Hall - Apartment Style | \$6,196 | \$6,570 | \$6,870 | \$7,180 |
| | Residence Hall - Dorm | 5,600 | 5,940 | 6,210 | 6,490 |
| | Residence Hall – Single Room | - | 6,240 | 6,520 | 6,820 |
| Board: | Medallion Gold Plus (19 meals per week) | \$3,640 | \$3,920 | \$4,100 | \$4,290 |
| | Medallion Blue Plus | \$3,270 | \$3,530 | 3,690 | 3,860 |
| | Medallion Gold | \$3,540 | \$3,840 | 4,010 | 4,190 |
| | Medallion Blue | \$3,070 | \$3,340 | 3,490 | 3,650 |

(Continued on following page)

Tuition, Fees, Room and Board Charges (continued)

| | <u>FY2006</u> | <u>FY2007</u> | <u>FY2008</u> | <u>FY2009</u> |
|------------------------------------|----------------------|----------------------|----------------------|----------------------|
| GRADUATE (Per Credit Hour): | | | | |
| Tuition | \$717 | \$760 | \$760 | \$795 |
| General University Fee | 28 | 30 | 30 | 30 |
| Technology Fee | 15 | 20 | 25 | 30 |
| Total Cost | <u>\$760</u> | <u>\$810</u> | <u>\$815</u> | <u>\$855</u> |

GRADUATE (Per Credit Hour) Education Program

| | | | | |
|---------------------|-------|-------|-------|-------|
| Tuition-Summer | \$321 | \$327 | \$335 | \$345 |
| Tuition-Fall/Spring | 327 | 335 | 346 | 357 |

GRADUATE (Per Credit Hour) MBA Program

| | | | | |
|------------------------|--------------|--------------|--------------|--------------|
| Tuition | \$617 | \$655 | \$685 | \$715 |
| General University Fee | 28 | 30 | 30 | 30 |
| Technology Fee | 15 | 20 | 25 | 30 |
| Total Cost | <u>\$660</u> | <u>\$705</u> | <u>\$740</u> | <u>\$775</u> |

GRADUATE (Per Credit Hour) Creative Writing Program

| | | | | |
|------------------------|--------------|--------------|--------------|--------------|
| Tuition | \$520 | \$540 | \$565 | \$590 |
| General University Fee | 20 | 20 | 25 | 30 |
| Technology Fee | 17 | 25 | 25 | 30 |
| Total Cost | <u>\$557</u> | <u>\$585</u> | <u>\$615</u> | <u>\$650</u> |

GRADUATE (Per Credit Hour) Ed. D. Program

| | | | | |
|---------------------|----------|----------|--------------|--------------|
| Tuition-Fall/Spring | <u>-</u> | <u>-</u> | <u>\$415</u> | <u>\$435</u> |
|---------------------|----------|----------|--------------|--------------|

Source: Controller's Office

Tuition Comparison, Wilkes and Other Institutions

(For institutions where ten or more accepted freshman applicants enrolled in a given year)

| Tuition and Fees | <u>2005-06</u> | <u>2006-07</u> | <u>2007-08</u> | <u>2008-09</u> | <u>% most recent increase</u> |
|--|-----------------------|-----------------------|-----------------------|-----------------------|--------------------------------------|
| Wilkes University | \$21,646 | \$22,990 | \$24,080 | \$25,170 | 4.5% |
| Bloomsburg University | 6,226 | 6,412 | 6,623 | 6,848 | 3.4% |
| Drexel University | 24,280 | 25,450 | 28,780 | 30,440 | 5.8% |
| Duquesne University | 21,480 | 22,665 | 23,950 | 25,475 | 6.4% |
| East Stroudsburg University | 6,399 | 6,577 | 6,737 | 7,090 | 5.2% |
| Elizabethtown College | 25,200 | 26,950 | 29,000 | 30,650 | 5.7% |
| Fairleigh Dickinson University (Main Campus) | 23,144 | 24,644 | 25,624 | 27,784 | 8.4% |
| King's College | 21,470 | 22,280 | 23,450 | 24,680 | 5.2% |
| Kutztown University | 6,426 | 6,619 | 6,873 | 7,126 | 3.7% |
| Lebanon Valley College | 24,860 | 26,385 | 27,800 | 29,350 | 5.6% |
| Lock Haven University | 6,258 | 6,445 | 6,679 | 6,917 | 3.6% |
| Luzerne County Community College (30 cr hrs) | 2,760 | 2,790 | 2,880 | 2,880 | 0.0% |
| Lycoming College | 24,255 | 25,605 | 27,129 | 28,764 | 6.0% |
| Mansfield University | 6,434 | 6,676 | 6,979 | 7,359 | 5.4% |
| Marywood University | 21,580 | 22,760 | 23,990 | 25,390 | 5.8% |
| Millersville University | 6,236 | 6,398 | 6,624 | 6,866 | 3.7% |
| Misericordia University | 19,700 | 20,860 | 21,950 | 23,150 | 5.5% |
| Moravian College | 25,263 | 26,775 | 28,388 | 30,062 | 5.9% |
| Penn State University- University Park*** | 11,508 | 12,450 | 12,844 | 13,706 | 6.7% |
| Penn State Wilkes-Barre*** | 10,200 | 10,806 | 11,006 | 11,700 | 6.3% |
| Rutgers University (New Brunswick)** | 9,221 | 9,958 | 10,614 | 11,560 | 8.9% |
| Shippensburg University | 6,175 | 6,549 | 6,848 | 7,099 | 3.7% |
| Susquehanna University | 26,265 | 27,620 | 29,330 | 31,080 | 6.0% |
| Temple University | 9,640 | 10,180 | 10,802 | 11,448 | 6.0% |
| University of Delaware* | 17,474 | 18,450 | 19,400 | 21,126 | 8.9% |
| University of Pittsburgh | 11,436 | 12,138 | 12,876 | 13,642 | 5.9% |
| University of Scranton | 24,030 | 25,938 | 28,758 | 31,576 | 9.8% |
| University of the Sciences in Philadelphia | 24,000 | 25,392 | 26,900 | 28,506 | 6.0% |
| West Chester University | 6,147 | 6,293 | 6,676 | 6,737 | 0.9% |

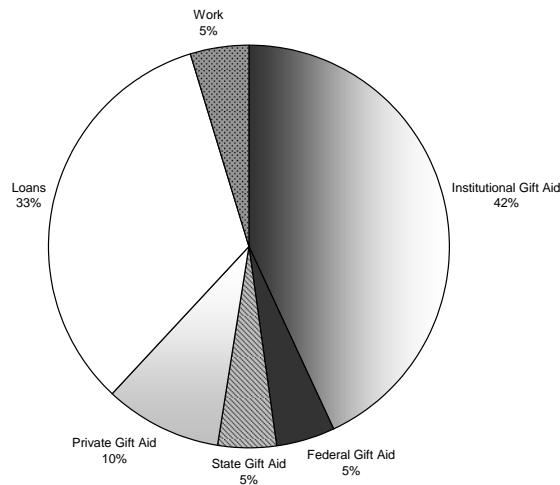
* Non-resident tuition

** NJ resident

*** PA resident

Student Financial Aid

Financial Aid Awarded to Fall 2008 Full-Time Undergraduate Students* by Source



| | |
|--|----------|
| Percentage of Full-Time Undergraduates* Awarded Some Form of Financial Aid | 94.5% |
| Percentage of First-Time Full-Time Freshmen Awarded Some Form of Financial Aid | 97.1% |
| Average Financial Aid Package Awarded to Full-Time Undergraduate Students* (including work study and loans to students) | \$22,073 |
| Percentage of 2008 Bachelor's Degree Recipients Who Borrowed | 88.3% |
| Estimated Average Indebtedness of 2008 Bachelor's Degree Recipients Who Borrowed | \$31,935 |
| Percentage of 2008 Doctor of Pharmacy (D.Ph.) Degree Recipients Who Borrowed | 85.9% |
| Estimated Average Indebtedness of 2008 D.Ph. Degree Recipients Who Borrowed | \$68,926 |

Institutional, Federal and State Gift Aid

| <u>Funding Source</u> | <u>FY 2004</u> | <u>FY 2005</u> | <u>FY2006</u> | <u>FY2007</u> | <u>FY2008</u> |
|------------------------------|-----------------------|-----------------------|----------------------|----------------------|----------------------|
| Institutional Gift Aid** | \$14,804,434 | \$17,162,346 | \$18,946,275 | \$19,353,547 | \$21,064,310 |
| Federal Gift Aid | 1,968,603 | 1,947,067 | 2,375,707 | 2,050,527 | 2,508,839 |
| State Gift Aid | 3,060,025 | 3,199,354 | 3,653,440 | 3,909,295 | 4,036,331 |
| Total | \$19,833,062 | \$22,308,767 | \$24,975,422 | \$25,313,369 | \$27,609,480 |

* Includes first- and second-year students in the School of Pharmacy

**Excludes employee and dependent tuition remission

Wilkes Alumni

Alumni by Graduation Year (Undergraduate only)

| Graduation Year | Graduates | Alumni of Record[*] | % Constituents | Deceased |
|------------------------|------------------|-------------------------------------|-----------------------|-----------------|
| 1935 - 1939 | 354 | 63 | 0.23% | 186 |
| 1940 - 1949 | 1,180 | 372 | 1.39% | 466 |
| 1950 - 1959 | 2,791 | 1,344 | 5.01% | 710 |
| 1960 - 1969 | 3,370 | 2,521 | 9.39% | 341 |
| 1970 - 1979 | 5,340 | 4,295 | 16.00% | 218 |
| 1980 - 1989 | 5,231 | 4,328 | 16.12% | 113 |
| 1990 - 1999 | 5,745 | 5,119 | 19.07% | 46 |
| 2000 - 2008 | 9,020 | 8,801 | 32.79% | 8 |
| TOTAL | 33,031 | 26,843 | 100.00% | 2,088 |

* Solicitable alumni (excludes deceased, bad addresses & those requesting no solicitation)

Alumni Giving

| | 2003-04 | 2004-05 | 2005-06 | 2006-07 | 2007-08 |
|---------------------------------------|----------------|----------------|----------------|----------------|----------------|
| Undergraduate Alumni of Record | 14,394 | 14,694 | 15,006 | 15,339 | 15,700 |
| Undergraduate Alumni Donors | 2,543 | 2,361 | 2,422 | 2,510 | 2,590 |
| Alumni Giving Rate | 17.7% | 16.1% | 16.1% | 16.4% | 16.5% |

Source: Alumni Relations & Annual Giving Programs

Funds Raised
(Cash Basis)

| <u>By Source</u> | <u>FY2007</u> | <u>FY2008</u> |
|-------------------------|----------------------|----------------------|
| Alumni | \$ 1,959,971 | \$ 1,021,648 |
| Parents | 3,859 | 740 |
| Other | 1,171,788 | 2,589,871 |
| Foundations | 204,165 | 225,158 |
| Corporation/Business | 3,089,485 | 316,453 |
| Total | \$ 6,429,268 | \$ 4,153,870 |

| <u>By Purpose</u> | <u>FY2007</u> | <u>FY2008</u> |
|--------------------------|----------------------|----------------------|
| Unrestricted | \$ 970,190 | \$ 1,028,838 |
| Academic Divisions | 600,731 | 301,445 |
| Public Service | 161,837 | 234,501 |
| Library | 3,699 | 3,606 |
| Physical Plant | 2,100 | 11,425 |
| Student Financial Aid | 107,878 | 107,751 |
| Other Restricted | 322,672 | 268,244 |
| Property | 2,972,750 | 5,000 |
| Endowment (restricted) | 2,095 | 2,102,549 |
| Endowment (unrestricted) | 1,235,722 | 2,927 |
| Research | 19,256 | 15,610 |
| Athletics | 30,338 | 71,974 |
| Total | \$ 6,429,268 | \$ 4,153,870 |

Source: Alumni Relations & Annual Giving Programs

FACILITIES

Building Inventory – Assignable Square Footage

| Buildings: | Admin | Classrooms, Labs, Galleries, Studios | Faculty Offices | Residence Halls | Other Aux. Buildings | Total |
|------------------------------|--------------|---|----------------------------|----------------------------|-------------------------------------|--------------|
| Allan P. Kirby Center | 1,800 | | | | 1,200 | 3,000 |
| Annette Evans House | 1,018 | | | | | 1,018 |
| Barre Hall | | | | 7,553 | | 7,553 |
| Bedford Hall | 1,200 | 2,487 | 848 | | | 4,535 |
| Breiseth Hall | 2,000 | 18,880 | 10,000 | | | 30,880 |
| Capin | 971 | 450 | 3,756 | | | 5,177 |
| Catlin Hall | | | | 5,097 | | 5,097 |
| Ceramics Studio | | 1,800 | | | | 1,800 |
| Chase Hall | 3,973 | | | | | 3,973 |
| Chesapeake/Delaware Hall | | | | 13,665 | | 13,665 |
| Conyngham Hall | 1,898 | | | | | 1,898 |
| Darte Center | 437 | | 661 | | 9,000 | 10,098 |
| Darte Hall | 975 | 14,529 | 4,870 | | | 20,374 |
| Doane Hall | | | | 3,353 | | 3,353 |
| Evans Hall | | | | 41,724 | 1,421 | 43,145 |
| Service & Support Operations | 14,000 | | | | | 14,000 |
| Farley Library | | | | | 45,282 | 45,282 |
| Fenner Hall | 350 | | | | 800 | 1,150 |
| Fortinsky Hall | | | | 11,718 | | 11,718 |
| Henry Student Center | | | | | 48,000 | 48,000 |
| Hollenback Hall | 2,978 | | | | | 2,978 |
| Kirby Hall | 610 | 2,031 | 3,621 | | | 6,262 |
| Marts Center | 1,000 | 7,775 | | | 46,654 | 55,429 |
| McClintock Hall | | | | 5,532 | | 5,532 |
| McCole House | | | | | 8,300 | 8,300 |
| Moat/Miner Hall | | | | | 1,500 | 1,500 |
| Munson Field House | 400 | 800 | | | 38,000 | 39,200 |
| O'Hop Hall | | | | | 3,772 | 3,772 |
| Parking Garage | 4,500 | | | | 104,832 | 109,332 |
| Passan Hall | 9,815 | | | | | 9,815 |
| Pearsall Hall | | 1,500 | 5,100 | | | 6,600 |
| Rifkin Hall | | | | 10,000 | | 10,000 |
| Ross Hall | | | | 2,792 | | 2,792 |
| Roth Hall | 12,340 | | | | | 12,340 |
| Schiowitz Hall | | | | 11,356 | | 11,356 |
| Slocum Hall | | | | 6,107 | | 6,107 |
| Stark Learning Center | 2,127 | 111,655 | 14,610 | | | 128,392 |
| Sterling Hall | | | | 5,355 | | 5,355 |
| Sturdevant Hall | | | | 7,329 | | 7,329 |

(Continued on following page)

FACILITIES (continued)

| Buildings: | Admin | Classrooms, Labs, Galleries, Studios | Faculty Offices | Residence Halls | Other Aux. Buildings | Total |
|-------------------------|----------------|---|----------------------------|----------------------------|-------------------------------------|------------------|
| Sullivan Hall | | | | 5,852 | | 5,852 |
| UCoM | 43,000 | 36,000 | | | 2,000 | 81,000 |
| University Tower | | | | 103,214 | 66,786 | 170,000 |
| Waller North & South | | | | 18,771 | | 18,771 |
| Weckesser Hall & Annex | | | | | 13,691 | 13,691 |
| Weiss Hall | | | | 4,487 | | 4,487 |
| 70-72 Wright St. | | | | | 7,200 | 7,200 |
| 247 South Franklin St. | | | | | 6,100 | 6,100 |
| 245 South River St | | | 2,500 | | 6,875 | 9,375 |
| 258 South River St. | | | | 3,000 | | 3,000 |
| 321-323 South River St. | | | | 5,400 | | 5,400 |
| 324 South River St. | | | | | 4,500 | 4,500 |
| 325-327 South River St. | | | | 5,965 | | 5,965 |
| 339 South River St. | | | | 3,164 | | 3,164 |
| Total | 105,392 | 197,907 | 45,966 | 281,434 | 415,913 | 1,046,612 |

Eugene S. Farley Library

Fall 2008 Resources:

Print Collection

| | |
|-----------------------------|---------|
| Total Books | 176,839 |
| Book Additions | 2,241 |
| Total Bound Periodicals | 13,039 |
| Current Print Subscriptions | 434 |
| Microfilm Units | 789,824 |

A-V Collection

| | |
|----------|-----|
| DVD's | 918 |
| VHS | 687 |
| CD Books | 96 |

Digital Resources

| | |
|--------------------|---------|
| Online Journals | 10,000+ |
| Licensed Databases | 70+ |

Expenditures (\$)

| | |
|------------------------------------|---------|
| Books & Monographs | 68,107 |
| Print Periodicals (Print & Online) | 107,678 |
| A-V Resources | 4,156 |
| Online Databases | 77,322 |

Usage Statistics

| | |
|------------------------------|---------|
| Total Circulations | 12,657 |
| Turnstile Count | 199,673 |
| Interlibrary Loans | 2,087 |
| Information Literacy Classes | 104 |
| Reference Questions | 3,100 |

Computers

| | |
|------------------------|-------|
| Desktops Available | 44 |
| Laptops Available | 14 |
| Laptop Loans | 2,939 |
| Instructional Desktops | 13 |

Staff

| | |
|-------------------------|---|
| Professional Librarians | 4 |
| Technicians | 8 |

Source: Library

Computing Inventory

Computers Available for Student Use

| | |
|--------------------------------|-----|
| Closed labs, classrooms, clubs | 490 |
|--------------------------------|-----|

| | |
|------------------|----|
| Open access labs | 80 |
|------------------|----|

| | |
|---|------------|
| Computers Available for Administrative & Faculty Use | <u>800</u> |
|---|------------|

| | |
|--------------|--------------|
| Total | 1,370 |
|--------------|--------------|

| | |
|----------------|----|
| Servers | 91 |
|----------------|----|

| | |
|----------------|--------------|
| Storage | 55 Terabytes |
|----------------|--------------|

| | |
|-------------------------|-----|
| Network Printers | 130 |
|-------------------------|-----|

Source: Information Technology Services

ACCREDITATIONS

Regional:

Middle States Association of Colleges and Schools

Professional:

American Chemical Society

Commission on Collegiate Nursing Education

Engineering Accreditation Commission

Accreditation Board of Engineering and
Technology

Association of Collegiate Business Schools and Programs

American Council on Pharmaceutical Education

GLOSSARY

Census Date

The completion of six weeks of classes

First-Generation Student

A student whose parents have never enrolled in college

First-Professional Program

The First-Professional Program requires the completion of the academic requirements to begin practice in the profession; at least two years of college work prior to entering the program; and a total of at least six academic years of college work to complete the degree program, including prior required college work plus the length of the professional program itself.

First-Professional Student

A student enrolled in the Pharmacy Program

First-Time Freshman

An entering freshman who has never attended any college. Includes students enrolled in the fall term who attended for the first time in the prior summer term. Includes students who entered with advanced standing (college credits earned before graduation from high school).

FTE (Full-Time Equivalent)

A full-time Undergraduate, Graduate, or First-Professional Student is equivalent to one FTE

Part-time Undergraduate and First-Professional FTE is calculated by dividing part-time registered credits by fifteen

Part-time Graduate FTE is calculated by dividing part-time registered credits by nine

Full-time Student

Undergraduate and First-Professional - A student enrolled for twelve or more semester credits each term

Graduate - A student enrolled for nine or more semester credits

Graduate Student

A student who holds a bachelor's or first-professional degree, or equivalent, and is taking courses at the post-baccalaureate level

International Student (Nonresident Alien)

A person who is not a citizen or national of the United States and who is in this country on a visa or temporary basis and does not have the right to remain indefinitely

Part-time Student

Undergraduate and First-Professional - A student enrolled for less than twelve credits

Graduate - A student enrolled for less than nine credits

Tenure

Status of a personnel position, or a person occupying a position or occupation, with respect to permanence of the position

Tenure Track

Status of personnel positions that lead to consideration for tenure

Undergraduate Student

A student enrolled in a four-year bachelor's degree program