



*Office of Information, Analysis and Planning — November 2011*

# 2011–12 FACT BOOK



## Table of Contents

<b>STUDENTS.....</b>	<b>1</b>
Fall Enrollment Trends .....	1
Fall Enrollment by Gender .....	2
Fall Enrollment by Ethnicity.....	3
Fall Enrollment Percentages.....	5
Fall Enrollment by Primary Major .....	6
Fall Enrollment by Residence .....	10
Fall Enrollment by Age Category .....	10
Fall Enrollment by State of Origin .....	11
International Students .....	12
First Generation College Students from Entering Freshman Class.....	12
Programs Offered .....	13
Degrees Granted by Department and Major .....	14
Admissions.....	16
Average SAT Scores for First-time Full-time Freshmen .....	16
Undergraduate Retention of First-time Full-time Freshmen .....	17
Graduation Rates for First-time Full-time Freshmen.....	18
Student Credit Hours by Department and Subject .....	19
Student Development .....	21
Leadership Institute.....	22
University College Programs and Services.....	22
Community Service .....	23
Career Placement of 2010 Graduates .....	23
Athletics.....	24
<b>FACULTY AND STAFF.....</b>	<b>25</b>
Staff by Category and Gender .....	25
Faculty by Gender and Tenure Status .....	26
Full-time Faculty by Department .....	27
Full-time Faculty Degrees .....	28
Faculty and Staff by Ethnicity.....	29

<b>ORGANIZATIONAL CHARTS.....</b>	<b>30</b>
Administrative .....	30
Finance and Support Operations .....	31
Provost.....	32
Enrollment Services .....	33
Advancement .....	34
Student Development .....	35
Marketing/Communications .....	36
<b>FINANCES.....</b>	<b>37</b>
Statement of Activities .....	37
Endowment and Other Long-Term Investments .....	38
Tuition, Fees, Room and Board Charges .....	39
Tuition Comparison, Wilkes and Other Institutions .....	41
Student Financial Aid .....	42
Wilkes Alumni .....	43
Funds Raised .....	44
<b><i>FACILITIES</i> .....</b>	<b>45</b>
Building Inventory – Assignable Square Footage .....	45
Eugene S. Farley Library .....	47
Computing Inventory .....	48
<b><i>ACCREDITATIONS</i>.....</b>	<b>48</b>
<b>GLOSSARY .....</b>	<b>49</b>

# STUDENTS

## *Fall Enrollment Trends*

As of official census date

	<u>2007</u>	<u>2008</u>	<u>2009</u>	<u>2010</u>	<u>2011</u>
<b>Undergraduate</b>					
Full-time	2,110	2,084	2,011	1,968	2,023
Part-time	226	225	229	216	188
<b>Total</b>	<b>2,336</b>	<b>2,309</b>	<b>2,240</b>	<b>2,184</b>	<b>2,211</b>
FTE	2,192	2,162	2,085	2,033	2,089
<b>Graduate</b>					
Full-time	215	277	303	231	248
Part-time	2,288	3,046	3,417	3,232	2,425
<b>Total</b>	<b>2,503</b>	<b>3,323</b>	<b>3,720</b>	<b>3,463</b>	<b>2,673</b>
FTE	1,168	1,566	1,781	1,704	1,332
<b>First-Professional</b>					
Full-time	274	268	279	278	276
Part-time	1	1	0	1	3
<b>Total</b>	<b>275</b>	<b>269</b>	<b>279</b>	<b>279</b>	<b>279</b>
FTE	274	268	279	278	277
<b>Total</b>					
Full-time	2,599	2,629	2,593	2,477	2,547
Part-time	2,515	3,272	3,646	3,449	2,616
<b>Total</b>	<b>5,114</b>	<b>5,901</b>	<b>6,239</b>	<b>5,926</b>	<b>5,163</b>
FTE	3,634	3,996	4,145	4,015	3,697

**Fall Enrollment by Gender**

As of official census date

	<u>2007</u>	<u>2008</u>	<u>2009</u>	<u>2010</u>	<u>2011</u>
<b>Undergraduate Students</b>					
Male Full-time	1,044	1,045	1,055	1,009	1,024
Female Full-time	<u>1,066</u>	<u>1,039</u>	<u>956</u>	<u>959</u>	<u>999</u>
Total	<u>2,110</u>	<u>2,084</u>	<u>2,011</u>	<u>1,968</u>	<u>2,023</u>
Male Part-time	122	105	88	115	96
Female Part-time	<u>104</u>	<u>120</u>	<u>141</u>	<u>101</u>	<u>92</u>
Total	<u>226</u>	<u>225</u>	<u>229</u>	<u>216</u>	<u>188</u>
<b>First Professional Students</b>					
Male Full-time	105	105	115	111	107
Female Full-time	<u>169</u>	<u>163</u>	<u>164</u>	<u>167</u>	<u>169</u>
Total	<u>274</u>	<u>268</u>	<u>279</u>	<u>278</u>	<u>276</u>
Male Part-time	0	0	0	0	1
Female Part-time	<u>1</u>	<u>1</u>	<u>0</u>	<u>1</u>	<u>2</u>
Total	<u>1</u>	<u>1</u>	<u>0</u>	<u>1</u>	<u>3</u>
<b>Graduate Students</b>					
Male Full-time	102	127	127	90	111
Female Full-time	<u>113</u>	<u>150</u>	<u>176</u>	<u>141</u>	<u>137</u>
Total	<u>215</u>	<u>277</u>	<u>303</u>	<u>231</u>	<u>248</u>
Male Part-time	728	967	993	927	696
Female Part-time	<u>1,560</u>	<u>2,079</u>	<u>2,424</u>	<u>2,305</u>	<u>1,729</u>
Total	<u>2,288</u>	<u>3,046</u>	<u>3,417</u>	<u>3,232</u>	<u>2,425</u>
<b>Total University</b>					
Male Full-time	1,251	1,277	1,297	1,210	1,242
Female Full-time	<u>1,348</u>	<u>1,352</u>	<u>1,296</u>	<u>1,267</u>	<u>1,305</u>
Total	<u>2,599</u>	<u>2,629</u>	<u>2,593</u>	<u>2,477</u>	<u>2,547</u>
Male Part-time	850	1,072	1,081	1,042	793
Female Part-time	<u>1,665</u>	<u>2,200</u>	<u>2,565</u>	<u>2,407</u>	<u>1,823</u>
Total	<u>2,515</u>	<u>3,272</u>	<u>3,646</u>	<u>3,449</u>	<u>2,616</u>

## ***Fall Enrollment by Ethnicity***

As of official census date

	<u>2007</u>	<u>2008</u>	<u>2009</u>	<u>2010</u>	<u>2011</u>
<b>Undergraduate Students</b>					
<b>Full-time</b>					
White	1,865	1,753	1,678	1,548	1,555
American Indian/Alaskan	6	4	4	2	3
Asian	55	45	43	45	50
Black	66	72	69	66	71
Hawaiian/Pacific Island.	0	0	0	1	0
Hispanic	54	52	34	51	63
Non-Resident Alien	37	54	50	53	56
Two or more races	0	0	8	29	44
Unidentified	27	104	125	173	181
Total Full-time	<u>2,110</u>	<u>2,084</u>	<u>2,011</u>	<u>1,968</u>	<u>2,023</u>
<b>Part-time</b>					
White	156	142	122	86	102
American Indian/Alaskan	1	0	0	0	0
Asian	3	4	2	2	1
Black	4	8	5	5	2
Hawaiian/Pacific Island.	0	0	0	0	0
Hispanic	3	1	1	5	8
Non-Resident Alien	9	4	3	7	3
Two or more races	0	0	3	4	5
Unidentified	50	66	93	107	67
Total Part-time	<u>226</u>	<u>225</u>	<u>229</u>	<u>216</u>	<u>188</u>
<b>First-Professional Students</b>					
<b>Full-time</b>					
White	258	250	260	264	260
American Indian/Alaskan	1	0	0	0	0
Asian	12	13	10	4	7
Black	0	1	1	2	1
Hawaiian/Pacific Island.	0	0	0	0	0
Hispanic	1	1	1	1	1
Non-Resident Alien	2	3	2	1	1
Two or more races	0	0	2	2	2
Unidentified	0	0	3	4	4
Total Full-time	<u>274</u>	<u>268</u>	<u>279</u>	<u>278</u>	<u>276</u>
<b>Part-time</b>					
White	1	1	0	0	1
American Indian/Alaskan	0	0	0	0	0
Asian	0	0	0	0	0
Black	0	0	0	0	1
Hawaiian/Pacific Island.	0	0	0	0	0
Hispanic	0	0	0	0	0
Non-Resident Alien	0	0	0	1	1
Two or more races	0	0	0	0	0
Unidentified	0	0	0	0	0
Total Part-time	<u>1</u>	<u>1</u>	<u>0</u>	<u>1</u>	<u>3</u>

(Continued on following page)

# ***Fall Enrollment by Ethnicity (continued)***

	<u>2007</u>	<u>2008</u>	<u>2009</u>	<u>2010</u>	<u>2011</u>
<b>Graduate Students</b>					
<b>Full-time</b>					
White	159	171	172	166	151
American Indian/Alaskan	2	3	0	0	0
Asian	4	3	1	4	7
Black	7	5	13	10	13
Hawaiian/Pacific Island.	0	0	0	1	1
Hispanic	1	3	4	6	3
Non-Resident Alien	31	52	66	24	31
Two or more races	0	0	0	2	2
Unidentified	11	40	47	18	40
Total Full-time	<u>215</u>	<u>277</u>	<u>303</u>	<u>231</u>	<u>248</u>
<b>Part-time</b>					
White	2,113	2,631	2,831	2,799	2,113
American Indian/Alaskan	2	0	2	0	1
Asian	17	14	14	20	19
Black	10	14	14	24	32
Hawaiian/Pacific Island.	0	0	1	1	0
Hispanic	20	22	25	33	36
Non-Resident Alien	18	14	15	9	3
Two or more races	0	0	6	26	23
Unidentified	108	351	509	320	198
Total Part-time	<u>2,288</u>	<u>3,046</u>	<u>3,417</u>	<u>3,232</u>	<u>2,425</u>
<b>Total University</b>					
<b>Full-time</b>					
White	2,282	2,174	2,110	1,978	1,966
American Indian/Alaskan	9	7	4	2	3
Asian	71	61	54	53	64
Black	73	78	83	78	85
Hawaiian/Pacific Island.	0	0	0	2	1
Hispanic	56	56	39	58	67
Non-Resident Alien	70	109	118	78	88
Two or more races	0	0	10	33	48
Unidentified	38	144	175	195	225
Total Full-time	<u>2,599</u>	<u>2,629</u>	<u>2,593</u>	<u>2,477</u>	<u>2,547</u>
<b>Part-time</b>					
White	2,270	2,774	2,953	2,885	2,216
American Indian/Alaskan	3	0	2	0	1
Asian	20	18	16	22	20
Black	14	22	19	29	35
Hawaiian/Pacific Island.	0	0	1	1	0
Hispanic	23	23	26	38	44
Non-Resident Alien	27	18	18	17	7
Two or more races	0	0	9	30	28
Unidentified	158	417	602	427	265
Total Part-time	<u>2,515</u>	<u>3,272</u>	<u>3,646</u>	<u>3,449</u>	<u>2,616</u>



## Fall Enrollment Percentages

### Status

	Undergraduate	First Professional	Graduate	Total
Full-time	91.5%	98.9%	9.3%	49.3%
Part-time	8.5%	1.1%	90.7%	50.7%
<b>Full-time</b>				
White	76.9%	94.2%	60.9%	77.2%
American Indian/Alaskan	0.1%	0.0%	0.0%	0.1%
Asian	2.5%	2.5%	2.8%	2.5%
Black	3.5%	0.4%	5.2%	3.3%
Hawaiian/Pacific Islander	0.0%	0.0%	0.4%	0.0%
Hispanic	3.1%	0.4%	1.2%	2.6%
Non-Resident Alien	2.8%	0.4%	12.5%	3.5%
Two or more races	2.2%	0.7%	0.8%	1.9%
Unidentified	8.9%	1.4%	16.1%	8.8%
<b>Part-time</b>				
White	54.3%	33.3%	87.1%	84.7%
American Indian/Alaskan	0.0%	0.0%	0.0%	0.0%
Asian	0.5%	0.0%	0.8%	0.8%
Black	1.1%	33.3%	1.3%	1.3%
Hawaiian/Pacific Islander	0.0%	0.0%	0.0%	0.0%
Hispanic	4.3%	0.0%	1.5%	1.7%
Non-Resident Alien	1.6%	33.3%	0.1%	0.3%
Two or more races	2.7%	0.0%	0.9%	1.1%
Unidentified	35.6%	0.0%	8.2%	10.1%
<b>Total</b>				
White	74.9%	93.5%	84.7%	81.0%
American Indian/Alaskan	0.1%	0.0%	0.0%	0.1%
Asian	2.3%	2.5%	1.0%	1.6%
Black	3.3%	0.7%	1.7%	2.3%
Hawaiian/Pacific Islander	0.0%	0.0%	0.0%	0.0%
Hispanic	3.2%	0.4%	1.5%	2.1%
Non-Resident Alien	2.7%	0.7%	1.3%	1.8%
Two or more races	2.2%	0.7%	0.9%	1.5%
Unidentified	11.2%	1.4%	8.9%	9.5%

### Gender

	Undergraduate	First Professional	Graduate	Total
<b>Full-time</b>				
Male	50.6%	38.8%	44.8%	48.8%
Female	49.4%	61.2%	55.2%	51.2%
<b>Part-time</b>				
Male	51.1%	33.3%	28.7%	30.3%
Female	48.9%	66.7%	71.3%	69.7%
<b>Total</b>				
Male	50.7%	38.7%	30.2%	39.4%
Female	49.3%	61.3%	69.8%	60.6%



## ***Fall Enrollment by Primary Major***

**As of official census date**

### **Full-time Undergraduate**

	<b>Fall 2007</b>	<b>Fall 2008</b>	<b>Fall 2009</b>	<b>Fall 2010</b>	<b>Fall 2011</b>
<b>Division of Biology &amp; Health Sciences</b>	<b>146</b>	<b>139</b>	<b>117</b>	<b>121</b>	<b>149</b>
Biology	140	135	115	116	141
Clinical Laboratory Sciences	-	1	1	5	8
Medical Technology	6	3	1	-	-
<b>Department of Chemistry</b>	<b>61</b>	<b>43</b>	<b>46</b>	<b>33</b>	<b>41</b>
Biochemistry	27	16	14	16	15
Chemistry	34	27	32	17	26
<b>Department of Accounting &amp; Business Admin.</b>	<b>280</b>	<b>274</b>	<b>245</b>	<b>235</b>	<b>217</b>
Accounting	89	82	76	68	72
Business Administration	191	192	169	167	145
<b>Dept. of Entrepreneurship &amp; Leadership Studies</b>	<b>35</b>	<b>32</b>	<b>38</b>	<b>32</b>	<b>22</b>
Entrepreneurship	35	32	38	32	22
<b>Department of Communication Studies</b>	<b>108</b>	<b>88</b>	<b>85</b>	<b>85</b>	<b>77</b>
Communication Studies	108	88	85	85	77
<b>Department of Education</b>	<b>124</b>	<b>113</b>	<b>109</b>	<b>124</b>	<b>121</b>
Education	6	-	-	-	-
Elementary & Early Childhood Education	-	-	-	1	3
Elementary Education	97	68	54	52	41
Middle School Education	-	-	-	1	6
Pre-Elementary Education	21	45	55	54	46
Pre-Middle School Education	-	-	-	16	25
<b>Division of Engineering &amp; Physics</b>	<b>172</b>	<b>161</b>	<b>167</b>	<b>175</b>	<b>193</b>
Applied & Engineering Sciences	4	3	1	1	-
Electrical Engineering	51	53	59	55	47
Engineering	10	5	11	15	21
Engineering Management	2	3	3	9	10
Mechanical Engineering	105	97	93	95	115
<b>Dept. of Environmental Engr. &amp; Earth Sciences</b>	<b>53</b>	<b>64</b>	<b>78</b>	<b>72</b>	<b>68</b>
Earth & Environmental Sciences	20	27	27	23	17
Environmental Engineering	33	37	51	49	51
<b>Division of Humanities</b>	<b>129</b>	<b>144</b>	<b>142</b>	<b>119</b>	<b>108</b>
English	60	70	71	53	50
History	60	64	62	57	48
Philosophy	2	2	3	2	2
Spanish	7	8	6	7	8
<b>Integrative Media and Art Department</b>	<b>26</b>	<b>32</b>	<b>36</b>	<b>32</b>	<b>44</b>
Integrative Media	26	32	36	32	44
<b>Department of Math &amp; Computer Science</b>	<b>55</b>	<b>65</b>	<b>71</b>	<b>68</b>	<b>64</b>
Computer Info Systems	11	13	17	9	7
Computer Science	22	23	26	30	33
Mathematics	22	29	28	29	24
<b>School of Nursing</b>	<b>282</b>	<b>261</b>	<b>211</b>	<b>225</b>	<b>257</b>
Nursing	282	261	211	225	257

(Continued on following page)

## ***Fall Enrollment by Primary Major (continued)***

### **Full-time Undergraduate**

	Fall 2007	Fall 2008	Fall 2009	Fall 2010	Fall 2011
<b>School of Pharmacy</b>	<b>157</b>	<b>161</b>	<b>148</b>	<b>137</b>	<b>132</b>
Pre-Pharmacy	141	143	135	130	130
Pharmaceutical Sciences	16	18	13	7	2
<b>Division of Behavioral and Social Sciences</b>	<b>280</b>	<b>267</b>	<b>270</b>	<b>262</b>	<b>273</b>
Criminology	88	90	80	91	104
International Studies	10	11	12	8	11
Political Science	37	34	43	36	34
Psychology	132	118	119	112	110
Sociology	13	14	16	15	14
<b>Division of Performing Arts</b>	<b>24</b>	<b>25</b>	<b>21</b>	<b>15</b>	<b>13</b>
Music Education	1	1	-	-	-
Musical Theatre	11	10	6	7	5
Theatre Arts	12	14	15	8	8
<b>Individualized Studies</b>	<b>1</b>	<b>-</b>	<b>-</b>	<b>-</b>	<b>-</b>
<b>Undeclared</b>	<b>177</b>	<b>215</b>	<b>227</b>	<b>233</b>	<b>244</b>
<b>Total</b>	<b>2,110</b>	<b>2,084</b>	<b>2,011</b>	<b>1,968</b>	<b>2,023</b>

### **Full-time Graduate**

	Fall 2007	Fall 2008	Fall 2009	Fall 2010	Fall 2011
<b>Department of Accounting &amp; Business Admin.</b>	<b>42</b>	<b>52</b>	<b>86</b>	<b>39</b>	<b>48</b>
Business Administration	42	52	86	39	48
<b>Graduate Teacher Education</b>	<b>50</b>	<b>76</b>	<b>89</b>	<b>73</b>	<b>92</b>
<b>Division of Engineering &amp; Physics</b>	<b>21</b>	<b>27</b>	<b>15</b>	<b>13</b>	<b>27</b>
Electrical Engineering	20	18	9	5	5
Engineering Management	-	-	-	6	18
Engineering Operations & Strategy	1	9	6	-	-
Mechanical Engineering	-	-	-	2	4
<b>Creative Writing</b>	<b>73</b>	<b>97</b>	<b>94</b>	<b>81</b>	<b>72</b>
<b>Department of Math &amp; Computer Science</b>	<b>-</b>	<b>-</b>	<b>1</b>	<b>1</b>	<b>-</b>
Mathematics	-	-	1	1	-
<b>School of Nursing</b>	<b>28</b>	<b>15</b>	<b>14</b>	<b>20</b>	<b>5</b>
<b>Undeclared</b>	<b>1</b>	<b>10</b>	<b>4</b>	<b>4</b>	<b>4</b>
<b>Total</b>	<b>215</b>	<b>277</b>	<b>303</b>	<b>231</b>	<b>248</b>

### **Full-time First-Professional**

	Fall 2007	Fall 2008	Fall 2009	Fall 2010	Fall 2011
<b>School of Pharmacy</b>	<b>274</b>	<b>268</b>	<b>279</b>	<b>278</b>	<b>276</b>

(Continued on following page)

## ***Fall Enrollment by Primary Major (continued)***

### **Part-time Undergraduate**

	<b>Fall 2007</b>	<b>Fall 2008</b>	<b>Fall 2009</b>	<b>Fall 2010</b>	<b>Fall 2011</b>
<b>Division of Biology &amp; Health Sciences</b>	<b>6</b>	<b>10</b>	<b>7</b>	<b>3</b>	<b>5</b>
Biology	6	10	7	3	4
Clinical Laboratory Sciences	-	-	-	-	1
<b>Department of Chemistry</b>	<b>4</b>	<b>5</b>	<b>3</b>	<b>1</b>	<b>4</b>
Biochemistry	2	1	-	-	1
Chemistry	2	4	3	1	3
<b>Department of Accounting &amp; Business Admin.</b>	<b>19</b>	<b>20</b>	<b>31</b>	<b>28</b>	<b>32</b>
Accounting	5	4	3	5	3
Business Administration	14	16	28	23	29
<b>Dept. of Entrepreneurship &amp; Leadership Studies</b>	<b>-</b>	<b>-</b>	<b>1</b>	<b>2</b>	<b>-</b>
Entrepreneurship	-	-	1	2	-
<b>Department of Communication Studies</b>	<b>2</b>	<b>2</b>	<b>4</b>	<b>2</b>	<b>2</b>
Communication Studies	2	2	4	2	2
<b>Department of Education</b>	<b>13</b>	<b>5</b>	<b>7</b>	<b>3</b>	<b>4</b>
Education	1	-	-	-	1
Elementary Education	12	3	5	1	3
Pre-Elementary Education	-	2	2	2	-
<b>Division of Engineering &amp; Physics</b>	<b>11</b>	<b>10</b>	<b>7</b>	<b>5</b>	<b>8</b>
Applied & Engineering Sciences	-	-	-	-	-
Electrical Engineering	3	3	3	3	5
Engineering	1	1	-	1	1
Engineering Management	2	2	1	-	-
Mechanical Engineering	5	4	3	1	2
<b>Dept. of Environmental Engr. &amp; Earth Sciences</b>	<b>5</b>	<b>3</b>	<b>3</b>	<b>5</b>	<b>3</b>
Earth & Environmental Sciences	1	2	1	2	1
Environmental Engineering	4	1	2	3	2
<b>Division of Humanities</b>	<b>17</b>	<b>11</b>	<b>5</b>	<b>6</b>	<b>8</b>
English	9	8	3	4	4
History	8	3	1	2	4
Philosophy	-	-	1	-	-
Spanish	-	-	-	-	-
<b>Integrative Media and Art Department</b>	<b>1</b>	<b>1</b>	<b>2</b>	<b>1</b>	<b>3</b>
Integrative Media	1	1	2	1	3
<b>Department of Math &amp; Computer Science</b>	<b>5</b>	<b>6</b>	<b>4</b>	<b>5</b>	<b>7</b>
Computer Info Systems	3	1	1	-	2
Computer Science	-	3	1	2	2
Mathematics	2	2	2	3	3
<b>School of Nursing</b>	<b>14</b>	<b>16</b>	<b>16</b>	<b>8</b>	<b>15</b>
<b>School of Pharmacy</b>	<b>-</b>	<b>2</b>	<b>1</b>	<b>1</b>	<b>-</b>
Pre-Pharmacy	-	-	-	1	-
Pharmaceutical Science	-	2	1	-	-

(Continued on following page)

## ***Fall Enrollment by Primary Major (continued)***

### **Part-time Undergraduate**

	Fall 2007	Fall 2008	Fall 2009	Fall 2010	Fall 2011
<b>Division of Behavioral and Social Sciences</b>	<b>27</b>	<b>23</b>	<b>17</b>	<b>10</b>	<b>9</b>
Criminology	7	5	4	1	2
International Studies	1	-	1	-	2
Political Science	1	-	1	1	-
Psychology	12	13	8	2	4
Sociology	6	5	3	6	1
<b>Division of Performing Arts</b>	<b>1</b>	<b>-</b>	<b>-</b>	<b>-</b>	<b>-</b>
Music	-	-	-	-	-
Music Education	1	-	-	-	-
Musical Theatre	-	-	-	-	-
Theatre Arts	-	-	-	-	-
<b>Individualized Studies</b>	<b>-</b>	<b>-</b>	<b>-</b>	<b>-</b>	<b>-</b>
<b>Undeclared</b>	<b>101</b>	<b>111</b>	<b>121</b>	<b>136</b>	<b>88</b>
<b>Total</b>	<b>226</b>	<b>225</b>	<b>229</b>	<b>216</b>	<b>188</b>

### **Part-time Graduate**

	Fall 2007	Fall 2008	Fall 2009	Fall 2010	Fall 2011
<b>Department of Accounting &amp; Business Admin.</b>	<b>151</b>	<b>111</b>	<b>118</b>	<b>146</b>	<b>134</b>
Business Administration	151	111	118	146	134
<b>Graduate Teacher Education</b>	<b>1,795</b>	<b>2,332</b>	<b>2,849</b>	<b>2,741</b>	<b>2,005</b>
<b>Division of Engineering &amp; Physics</b>	<b>34</b>	<b>27</b>	<b>19</b>	<b>15</b>	<b>26</b>
Electrical Engineering	19	12	9	6	6
Engineering Operations & Strategy	15	15	10	-	-
Engineering Management	-	-	-	9	9
Mechanical Engineering	-	-	-	-	11
<b>Creative Writing</b>	<b>19</b>	<b>10</b>	<b>29</b>	<b>18</b>	<b>17</b>
<b>Dept. of Environmental Engr. &amp; Earth Sciences</b>	<b>-</b>	<b>-</b>	<b>-</b>	<b>-</b>	<b>3</b>
Sustainability Management	-	-	-	-	3
<b>Department of Math &amp; Computer Sciences</b>	<b>-</b>	<b>3</b>	<b>1</b>	<b>3</b>	<b>4</b>
Mathematics	-	3	1	3	4
<b>School of Nursing</b>	<b>31</b>	<b>33</b>	<b>26</b>	<b>43</b>	<b>87</b>
<b>Undeclared</b>	<b>258</b>	<b>530</b>	<b>375</b>	<b>266</b>	<b>149</b>
<b>Total</b>	<b>2,288</b>	<b>3,046</b>	<b>3,417</b>	<b>3,232</b>	<b>2,425</b>

### **Part-time First-Professional**

	Fall 2007	Fall 2008	Fall 2009	Fall 2010	Fall 2011
<b>School of Pharmacy</b>	<b>1</b>	<b>1</b>	<b>-</b>	<b>1</b>	<b>3</b>

## ***Fall Enrollment by Residence***

### **Full-time Students**

	<b><u>Fall 2010</u></b>		<b><u>Fall 2011</u></b>	
<b>Residence Halls</b>				
First-time Full-time Freshmen	372	75%	399	74%
Full-time Undergraduate Students (including First-time Freshmen)	762	39%	734	36%
First-Professional Students	<u>34</u>	12%	<u>36</u>	13%
<b>Total</b>	<b>796</b>	<b>37%</b>	<b>770</b>	<b>33%</b>

### **Off-Campus**

First-time Full-time Freshmen	127	25%	140	26%
Undergraduate Students (including First-time Freshmen)	1,206	61%	1,289	64%
First-Professional Students	<u>244</u>	88%	<u>240</u>	87%
<b>Total</b>	<b>1,450</b>	<b>65%</b>	<b>1,529</b>	<b>67%</b>

### **Total Full-time**

First-time Full-time Freshmen	499	539
Full-time Undergraduate Students (including First-time Freshmen)	1,968	2,023
First-Professional Students	<u>278</u>	<u>276</u>
<b>Total</b>	<b>2,246</b>	<b>2,299</b>

## ***Fall Enrollment by Age Category***

### **Fall 2011 Enrollment**

	<b>Full-time</b>			<b>Part-time</b>			<b>Total</b>
	<b>Undergraduate</b>	<b>First-Professional</b>	<b>Graduate</b>	<b>Undergraduate</b>	<b>First-Professional</b>	<b>Graduate</b>	
<b>Under 18</b>	4	0	0	22	0	0	<b>26</b>
<b>18 - 19</b>	810	3	0	35	0	0	<b>848</b>
<b>20 - 21</b>	785	99	1	20	0	0	<b>905</b>
<b>22 - 24</b>	308	158	46	38	3	166	<b>719</b>
<b>25 - 29</b>	66	8	82	24	0	945	<b>1,125</b>
<b>30 - 34</b>	36	6	39	12	0	423	<b>516</b>
<b>35 - 39</b>	8	2	26	8	0	260	<b>304</b>
<b>40 - 49</b>	3	0	35	18	0	398	<b>454</b>
<b>50 - 64</b>	2	0	19	4	0	220	<b>245</b>
<b>65 &amp; Over</b>	0	0	0	1	0	2	<b>3</b>
<b>Age unknown</b>	1	0	0	6	0	11	<b>18</b>
<b>Total</b>	<b>2,023</b>	<b>276</b>	<b>248</b>	<b>188</b>	<b>3</b>	<b>2,425</b>	<b>5,163</b>

## ***Fall Enrollment by State of Origin***

### **Fall 2011 Enrollment**

	Full-time			Part-time			Total
	Undergraduate	First- Professional	Graduate	Undergraduate	First- Professional	Graduate	
Alaska						5	5
Arizona						6	6
Arkansas			1			2	3
California	1		4			13	18
Colorado						2	2
Connecticut	8	1		1		5	15
DC						4	4
Delaware	3	1	1			1	6
Florida	8		7			10	25
Georgia	1		4			2	7
Hawaii			3				3
Illinois	1					7	8
Indiana	1					6	7
Iowa						2	2
Kansas			1			1	2
Kentucky						1	1
Louisiana						1	1
Maine	5		1	1		2	9
Maryland	25	3	4	1		20	53
Massachusetts	3		1	1		2	7
Michigan	1		2			5	8
Minnesota						3	3
Mississippi			1			1	2
Missouri						1	1
Nevada						2	2
New Hampshire		1				3	4
New Jersey	201	15	5	2		30	253
New Mexico						1	1
New York	87	33	7	5		24	156
North Carolina	1					5	6
North Dakota						1	1
Ohio	1	2	2			5	10
Oregon						2	2
Pennsylvania	1,614	217	144	173	2	2,187	4,337
South Carolina	1		1			6	8
South Dakota						1	1
Tennessee	1		2			4	7
Texas			4			12	16
Vermont		1				1	2
Virginia	3		5	1		9	18
Washington			2			2	4
West Virginia			1				1
Wisconsin		1				2	3
Wyoming						1	1
Canada						19	19
Foreign Country	57	1	45	3	1	6	113
<b>Total</b>	<b>2,023</b>	<b>276</b>	<b>248</b>	<b>188</b>	<b>3</b>	<b>2,425</b>	<b>5,163</b>
<b>In State</b>	<b>79.8%</b>	<b>78.6%</b>	<b>58.1%</b>	<b>92.0%</b>	<b>66.7%</b>	<b>90.2%</b>	<b>84.0%</b>
<b>Out of State</b>	<b>17.4%</b>	<b>21.0%</b>	<b>23.8%</b>	<b>6.4%</b>	<b>0.0%</b>	<b>8.8%</b>	<b>13.4%</b>
<b>Foreign</b>	<b>2.8%</b>	<b>0.4%</b>	<b>18.1%</b>	<b>1.6%</b>	<b>33.3%</b>	<b>1.0%</b>	<b>2.6%</b>

## ***International Students***

### **Fall 2011 Enrollment By Country of Origin**

	Undergraduate		First- Professional	Graduate		Total		Total
	Non-Resident Alien	Internat.	Non-Resident Alien	Non-Resident Alien	Internat.	Non-Resident Alien	Internat.	
Bangladesh			1			1		1
Canada					19		19	19
China	1			4	1	5	1	6
France					1		1	1
Ghana	1					1		1
Greece	1					1		1
India	2			6		8		8
Japan	1					1		1
Jordan				4		4		4
Kuwait	2					2		2
Libya				1		1		1
Nepal	1			1		2		2
Nigeria				1		1		1
Oman					14		14	14
Russia	1					1		1
Saudi Arabia	39		1	14		54		54
Sweden				1		1		1
Switzerland		1					1	1
Turkey				1	1	1	1	2
UAE	10					10		10
Vietnam				1		1		1
<b>Total</b>	<b>59</b>	<b>1</b>	<b>2</b>	<b>34</b>	<b>36</b>	<b>95</b>	<b>37</b>	<b>132</b>

### ***First Generation College Students from Entering Freshman Class\****

<b><u>2007 Cohort</u></b>	<b><u>2008 Cohort</u></b>	<b><u>2009 Cohort</u></b>	<b><u>2010 Cohort</u></b>	<b><u>2011 Cohort</u></b>
29.4%	29.4%	29.7%	26.3%	28.1%
173 students	153 students	148 students	123 students	149 students

*\*A first generation student is defined as a student whose parents have never enrolled in college. The data is from responses to the CIRP Freshman Survey administered to incoming freshmen at Orientation.*



## ***Programs Offered***

### **Undergraduate**

BA	Biology	BBA	Business Administration
BA	Chemistry	BBA	Entrepreneurship
BA	Communication Studies	BS	Applied & Engineering Sciences
BA	Computer Science	BS	Accounting
BA	Criminology	BS	Biochemistry
BA	Earth & Environmental Sciences	BS	Biology
BA	Elem. & Early Childhood Education	BS	Chemistry
BA	English	BS	Clinical Laboratory Sciences
BA	History	BS	Computer Information Systems
BA	Individualized Studies	BS	Computer Science
BA	Integrative Media	BS	Earth & Environmental Sciences
BA	International Studies	BS	Electrical Engineering
BA	Mathematics	BS	Engineering Management
BA	Middle Level Education	BS	Environmental Engineering
BA	Musical Theatre	BS	Individualized Studies
BA	Philosophy	BS	Mathematics
BA	Political Science	BS	Mechanical Engineering
BA	Psychology	BS	Nursing
BA	Sociology		
BA	Spanish		
BA	Theatre Arts		

### **Graduate**

MA	Creative Writing
MBA	Business Administration
MFA	Creative Writing
MS	Education
MS	Electrical Engineering
MS	Engineering Management
MS	Mathematics
MS	Mechanical Engineering
MS	Nursing

### **Doctoral**

EDD	Educational Leadership
<b>Doctoral</b>	<b>Professional Practice</b>
DPH	Pharmacy
DNP	Nursing Practice

## ***Degrees Granted by Department and Major***

### **Bachelor's Degrees**

<b>Department</b>	<b>2006-07</b>	<b>2007-08</b>	<b>2008-09</b>	<b>2009-10</b>	<b>2010-11</b>
<b>Division of Biology &amp; Health Sciences</b>	<b>36</b>	<b>25</b>	<b>44</b>	<b>30</b>	<b>21</b>
Biology	36	25	43	29	21
Medical Technology	-	-	1	1	-
<b>Department of Chemistry</b>	<b>3</b>	<b>12</b>	<b>7</b>	<b>7</b>	<b>2</b>
Biochemistry	1	6	5	3	-
Chemistry	2	6	2	4	2
<b>Department of Accounting &amp; Business Administration</b>	<b>64</b>	<b>83</b>	<b>70</b>	<b>61</b>	<b>77</b>
Accounting	20	24	23	17	18
Business Administration	44	59	47	44	59
<b>Dept. of Entrepreneurship &amp; Leadership Studies</b>	<b>1</b>	<b>12</b>	<b>2</b>	<b>8</b>	<b>9</b>
<b>Department of Communication Studies</b>	<b>24</b>	<b>32</b>	<b>27</b>	<b>27</b>	<b>32</b>
<b>Integrative Media and Art Department</b>	<b>1</b>	<b>2</b>	<b>6</b>	<b>10</b>	<b>6</b>
Integrative Media	1	2	6	10	6
<b>Department of Education</b>	<b>41</b>	<b>32</b>	<b>18</b>	<b>16</b>	<b>30</b>
<b>Division of Engineering &amp; Physics</b>	<b>23</b>	<b>30</b>	<b>40</b>	<b>24</b>	<b>36</b>
Applied & Engineering Sciences	4	1	-	-	-
Electrical Engineering	8	11	10	6	17
Engineering Management	1	-	-	1	1
Mechanical Engineering	10	18	30	17	18
Physics	-	-	-	-	-
<b>Department of Environmental Engineering &amp; Earth Sciences</b>	<b>5</b>	<b>5</b>	<b>17</b>	<b>10</b>	<b>24</b>
Earth & Environmental Sciences	1	1	9	5	9
Environmental Engineering	4	4	8	5	15
<b>Division of Humanities</b>	<b>36</b>	<b>42</b>	<b>36</b>	<b>46</b>	<b>36</b>
English	23	14	11	25	10
History	12	22	18	17	20
Philosophy	-	2	-	3	1
Spanish	1	4	7	1	5
<b>Department of Math &amp; Computer Science</b>	<b>13</b>	<b>11</b>	<b>16</b>	<b>15</b>	<b>9</b>
Computer Information Systems	2	3	-	8	2
Computer Science	5	6	8	1	1
Mathematics	6	2	8	6	6
<b>Department of Pharmaceutical Sciences</b>	<b>1</b>	<b>1</b>	<b>-</b>	<b>3</b>	<b>3</b>
<b>School of Nursing</b>	<b>43</b>	<b>43</b>	<b>53</b>	<b>56</b>	<b>49</b>
<b>Division of Behavioral and Social Sciences</b>	<b>61</b>	<b>80</b>	<b>73</b>	<b>81</b>	<b>58</b>
Criminology	18	20	22	22	11
International Studies	-	1	1	2	-
Political Science	5	11	3	11	8
Psychology	34	42	42	36	32
Sociology	4	6	5	10	7

(Continued on following page)

## Degrees Granted by Department and Major (continued)

### Bachelor's Degrees

Department	2006-07	2007-08	2008-09	2009-10	2010-11
Division of Performing Arts	13	10	6	5	6
Music	1	-	-	-	-
Music Education	2	2	-	-	-
Musical Theatre	4	3	4	-	1
Theatre Arts	6	5	2	5	5
Unspecified	50	64	76	57	64
Individualized Studies	-	1	-	-	-
<b>Total</b>	<b>415</b>	<b>485</b>	<b>491</b>	<b>456</b>	<b>462</b>

### Master's Degrees

Department	2006-07	2007-08	2008-09	2009-10	2010-11
Department of Accounting & Business Administration	52	61	59	85	69
Business Administration	52	61	59	85	69
Creative Writing	31	27	27	45	50
Graduate Teacher Education	823	861	947	1,073	1,150
Division of Engineering & Physics	6	18	26	25	11
Electrical Engineering	6	18	16	16	3
Engineering Management	-	-	-	-	6
Engineering Operations & Strategy	-	-	10	9	2
Department of Math & Computer Science	-	-	2	1	1
Mathematics	-	-	2	1	1
School of Nursing	21	19	18	16	19
<b>Total</b>	<b>933</b>	<b>986</b>	<b>1,079</b>	<b>1,245</b>	<b>1,300</b>

### First-Professional Degrees

Department	2006-07	2007-08	2008-09	2009-10	2010-11
Pharmacy	63	71	61	69	70

### Doctoral Degrees

Department	2006-07	2007-08	2008-09	2009-10	2010-11
Education	-	-	-	-	3

## ***Admissions***

### **Full-time Undergraduate Students**

	<u>Fall 2007</u>	<u>Fall 2008</u>	<u>Fall 2009</u>	<u>Fall 2010</u>	<u>Fall 2011</u>
<b>Applied</b>	<b>3,066</b>	<b>3,176</b>	<b>3,038</b>	<b>2,951</b>	<b>3,275</b>
Freshman	2,668	2,778	2,641	2,485	2,811
Transfer	398	398	397	466	464
<b>Offered Admission</b>	<b>2,346</b>	<b>2,338</b>	<b>2,259</b>	<b>2,179</b>	<b>2,449</b>
Freshman	2,102	2,091	1,995	1,875	2,146
Transfer	244	247	264	304	303
<b>Offer Rate</b>	<b>76.5%</b>	<b>73.6%</b>	<b>74.4%</b>	<b>73.8%</b>	<b>74.8%</b>
Freshman	78.8%	75.3%	75.5%	75.5%	76.3%
Transfer	61.3%	62.1%	66.5%	65.2%	65.3%
<b>Enrolled*</b>	<b>740</b>	<b>698</b>	<b>652</b>	<b>654</b>	<b>719</b>
Freshman	627	578	535	513	558
Transfer	113	120	117	141	161
<b>Yield Rate</b>	<b>31.5%</b>	<b>29.9%</b>	<b>28.9%</b>	<b>30.0%</b>	<b>29.4%</b>
Freshman	29.8%	27.6%	26.8%	27.4%	26.0%
Transfer	46.3%	48.6%	44.3%	46.4%	53.1%

*\*As of the beginning of the Fall semester*

### ***Average SAT Scores for First-time Full-time Freshmen***

<b>Wilkes Freshmen</b>	<u>Fall 2007</u>	<u>Fall 2008</u>	<u>Fall 2009</u>	<u>Fall 2010</u>	<u>Fall 2011</u>
<b>Verbal</b>	513	515	520	519	515
<b>Math</b>	532	530	539	542	537
<b>Writing</b>	-	507	514	513	509
<b>Total Math &amp; Verbal</b>	1045	1045	1059	1060	1051
 <b>National Average</b>					
<b>Verbal</b>	502	502	501	501	497
<b>Math</b>	515	515	515	516	514
<b>Writing</b>	-	494	493	492	489
<b>Total Math &amp; Verbal</b>	1017	1017	1016	1017	1011

### ***Undergraduate Retention of First-time Full-time Freshmen***

		Retention Rates							
<b>Entering Fall Term*</b>		<b>1st Fall</b>	<b>2nd Fall</b>	<b>3rd Fall</b>	<b>4th Fall</b>	<b>5th Fall</b>	<b>6th Fall</b>	<b>7th Fall</b>	<b>8th Fall</b>
2000	N	460	343	299	287	77	15	5	3
	%		74.6%	65.0%	62.4%	16.7%	3.3%	1.1%	0.7%
2001	N	407	317	277	267	65	7	2	1
	%		77.9%	68.1%	65.6%	16.0%	1.7%	0.5%	0.2%
2002	N	471	370	313	296	69	22	6	1
	%		78.6%	66.5%	62.8%	14.6%	4.7%	1.3%	0.2%
2003	N	510	407	362	336	78	16	2	3
	%		79.8%	71.0%	65.9%	15.3%	3.1%	0.4%	0.6%
2004	N	551	443	390	371	70	9	4	3
	%		80.4%	70.8%	67.3%	12.7%	1.6%	0.7%	0.5%
2005	N	566	417	366	348	62	2	1	
	%		73.7%	64.7%	61.5%	11.0%	0.4%	0.2%	
2006	N	571	453	387	354	78	16		
	%		79.3%	67.8%	62.0%	13.7%	2.8%		
2007	N	620	483	408	381	76			
	%		77.9%	65.8%	61.5%	12.3%			
2008	N	561	447	355	337				
	%		79.7%	63.3%	60.1%				
2009	N	527	417	359					
	%		79.1%	68.1%					
2010	N	499	408						
	%		81.8%						
2011	N	539							

*\* As of official census date*

Note: Includes retention of students who enter the School of Pharmacy.

## Graduation Rates for First-time Full-time Freshmen

			Graduation Rates				
Entering Fall Term*		1st Fall	within 4 yrs	within 5 yrs	within 6 yrs	within 7 yrs	within 8 yrs
1998	N	375	148	187	200	201	201
	%		39.5%	49.9%	53.3%	53.6%	53.6%
1999	N	377	166	209	221	223	223
	%		44.0%	55.4%	58.6%	59.2%	59.2%
2000	N	460	194	251	259	264	265
	%		42.2%	54.6%	56.3%	57.4%	57.6%
2001	N	406 **	198	252	255	256	257
	%		48.8%	62.1%	62.8%	63.1%	63.3%
2002	N	471	224	266	272	277	278
	%		47.6%	56.5%	57.7%	58.8%	59.0%
2003	N	509 **	254	310	320	324	326
	%		49.9%	60.9%	62.9%	63.7%	64.0%
2004	N	550 **	288	349	355	357	
	%		52.4%	63.5%	64.5%	64.9%	
2005	N	562 **	270	323	325		
	%		48.0%	57.5%	57.8%		
2006	N	570 **	279	334			
	%		48.9%	58.6%			
2007	N	620	291				
	%		46.9%				

\*As of official census date

\*\*Cohort adjusted in accordance with IPEDS regulations

## ***Student Credit Hours by Department and Subject***

<b>Undergraduate</b>	<b>2006-07</b>	<b>2007-08</b>	<b>2008-09</b>	<b>2009-10</b>	<b>2010-11</b>
<b>Department of Aerospace Studies</b>	<b>87</b>	<b>96</b>	<b>141</b>	<b>205</b>	<b>231</b>
Aerospace Studies	87	96	141	205	231
<b>Division of Biology &amp; Health Sciences</b>	<b>4,002</b>	<b>4,179</b>	<b>4,067</b>	<b>3,826</b>	<b>3,899</b>
Biology	3,996	4,176	4,064	3,826	3,896
Marine Science	6	3	3	-	3
<b>Department of Chemistry</b>	<b>3,563</b>	<b>3,263</b>	<b>3,209</b>	<b>3,207</b>	<b>3,080</b>
Chemistry	3,563	3,263	3,209	3,207	3,080
<b>Department of Accounting &amp; Business Admin.</b>	<b>6,680</b>	<b>6,950</b>	<b>6,349</b>	<b>6,234</b>	<b>6,187</b>
Accelerated Business Administration	-	-	80	328	300
Accounting	1,407	1,539	1,359	1,285	1,215
Business Administration	4,839	4,780	4,383	4,139	4,059
Personal & Professional Development	434	631	527	482	613
<b>Dept. of Entrepreneurship &amp; Leadership Studies</b>	<b>378</b>	<b>556</b>	<b>464</b>	<b>579</b>	<b>573</b>
Entrepreneurship	378	556	464	579	573
<b>Department of Communication Studies</b>	<b>3,188</b>	<b>3,251</b>	<b>3,274</b>	<b>2,841</b>	<b>2,747</b>
Communications	3,188	3,251	3,274	2,841	2,747
<b>Department of Education</b>	<b>3,094</b>	<b>2,666</b>	<b>2,451</b>	<b>2,854</b>	<b>3,294</b>
Education	2,974	2,498	2,214	2,569	2,661
Special Education	120	168	237	285	633
<b>Division of Engineering &amp; Physics</b>	<b>4,268</b>	<b>4,836</b>	<b>4,533</b>	<b>4,714</b>	<b>4,866</b>
Electrical Engineering	703	704	777	865	913
Engineering	567	778	706	691	883
Engineering Management	156	119	111	183	146
Mechanical Engineering	1,197	1,292	1,272	1,291	1,293
Physics	1,645	1,943	1,667	1,684	1,631
<b>Dept. of Environmental Engr. &amp; Earth Sciences</b>	<b>1,497</b>	<b>1,515</b>	<b>1,805</b>	<b>1,872</b>	<b>2,129</b>
Earth & Environmental Sciences	1,248	1,236	1,393	1,230	1,420
Environmental Engineering	249	279	412	642	709
<b>Division of Humanities</b>	<b>9,922</b>	<b>10,340</b>	<b>10,473</b>	<b>9,900</b>	<b>9,184</b>
English	5,138	5,199	5,092	4,715	4,541
French	144	177	135	210	135
Spanish	1,008	1,144	1,338	1,314	1,107
History	2,673	2,950	3,102	2,814	2,584
Philosophy	959	870	806	847	817
<b>Integrative Media and Art Department</b>	<b>1,219</b>	<b>1,485</b>	<b>1,789</b>	<b>1,745</b>	<b>1,771</b>
Integrative Media	202	306	366	439	433
Art	1,017	1,179	1,423	1,306	1,338
<b>Interdisciplinary</b>	<b>2,275</b>	<b>2,515</b>	<b>2,465</b>	<b>2,135</b>	<b>2,070</b>
Freshman Foundations	1,767	1,929	1,773	1,677	1,635
Cooperative Education	259	251	244	154	122
Career Planning	153	170	244	217	255
Interdisciplinary Core Studies	-	-	-	-	3
Study Travel Experience	3	60	39	6	-
Women's Studies	93	105	165	81	55
<b>Department of Math &amp; Computer Science</b>	<b>6,145</b>	<b>6,722</b>	<b>6,369</b>	<b>6,337</b>	<b>6,320</b>
Computer Science	1,886	2,289	2,086	2,081	2,079
Mathematics	4,259	4,433	4,283	4,256	4,241

(Continued on following page)



## Student Credit Hours by Department & Subject (continued)

<b>Undergraduate</b>	<b>2006-07</b>	<b>2007-08</b>	<b>2008-09</b>	<b>2009-10</b>	<b>2010-11</b>
<b>School of Nursing</b>	<b>3,431</b>	<b>3,951</b>	<b>3,690</b>	<b>3,365</b>	<b>3,506</b>
<b>School of Pharmacy</b>	<b>4,862</b>	<b>4,930</b>	<b>5,011</b>	<b>5,203</b>	<b>5,122</b>
Pharmacy	4,780	4,856	4,927	5,063	4,995
Pharmaceutical Sciences	82	74	84	140	127
<b>Division of Behavioral &amp; Social Sciences</b>	<b>10,194</b>	<b>10,897</b>	<b>10,216</b>	<b>9,917</b>	<b>9,261</b>
Anthropology	702	861	864	747	822
Economics	1,014	1,068	1,030	1,008	798
International Studies	-	-	6	6	3
Political Science	1,557	1,708	1,454	1,575	1,542
Psychology	4,255	4,484	4,304	4,049	3,828
Sociology	2,666	2,776	2,558	2,532	2,268
<b>Division of Performing Arts</b>	<b>2,850</b>	<b>2,687.5</b>	<b>2,694</b>	<b>2,462</b>	<b>2,079</b>
Dance	793	822	944	843	793
Music	1,168	1,061.5	958	902	731
Music Education	14	5	-	-	-
Theatre Arts	875	799	792	717	555
<b>Total</b>	<b>67,655</b>	<b>70,839.5</b>	<b>69,000</b>	<b>67,396</b>	<b>66,319</b>

<b>Graduate</b>	<b>2006-07</b>	<b>2007-08</b>	<b>2008-09</b>	<b>2009-10</b>	<b>2010-11</b>
<b>Division of Biology &amp; Health Sciences</b>	<b>31</b>	<b>9</b>	<b>20</b>	<b>16</b>	<b>30</b>
<b>Department of Chemistry</b>	<b>12</b>	<b>15</b>	<b>30</b>	<b>6</b>	<b>15</b>
<b>Department of Accounting &amp; Business Admin.</b>	<b>2,619</b>	<b>2,904</b>	<b>3,339</b>	<b>4,137</b>	<b>3,272</b>
<b>Graduate Teacher Education</b>	<b>34,459</b>	<b>40,188</b>	<b>46,173</b>	<b>51,286</b>	<b>47,493</b>
Autism	-	-	-	102	150
Education	33,070	34,065	37,062	40,699	36,753
Special Education	390	468	411	492	468
Educational Advanced Methods	741	5,175	6,723	5,091	4,602
Education - Instructional Media	-	-	1,455	3,990	4,368
English as a Second Language	-	-	51	240	357
School Business Leadership	258	480	471	672	795
<b>Division of Engineering &amp; Physics</b>	<b>555</b>	<b>661</b>	<b>568</b>	<b>343</b>	<b>390</b>
Electrical Engineering	447	466	353	194	141
Engineering Operations & Strategy	90	189	206	149	162
Mechanical Engineering	-	-	-	-	60
Physics	18	6	9	-	27
<b>Creative Writing</b>	<b>1,016</b>	<b>1,555</b>	<b>1,879</b>	<b>1,887</b>	<b>1,827</b>
<b>Division of Humanities</b>	<b>84</b>	<b>54</b>	<b>87</b>	<b>51</b>	<b>54</b>
English	57	30	48	30	21
History	27	24	39	21	33
<b>Dept. of Environmental Engr. and Earth Sciences</b>	<b>2</b>	<b>14</b>	<b>3</b>	<b>3</b>	<b>18</b>
Earth & Environmental Sciences	2	14	3	3	15
Sustainability	-	-	-	-	3
<b>Department of Math &amp; Computer Science</b>	<b>108</b>	<b>32</b>	<b>86</b>	<b>65</b>	<b>49</b>
Computer Science	-	12	18	18	6
Mathematics	108	20	68	47	43
<b>School of Nursing</b>	<b>1,223</b>	<b>1,202</b>	<b>878</b>	<b>820</b>	<b>1,234</b>
<b>School of Pharmacy</b>	<b>4,493</b>	<b>4,581</b>	<b>4,356</b>	<b>4,817</b>	<b>4,652</b>
<b>Total</b>	<b>44,602</b>	<b>51,215</b>	<b>57,419</b>	<b>63,431</b>	<b>59,034</b>

## **Student Development**

The Student Development Office offers educational and social experiences that enhance the quality of student life and learning. A few of the programs offered include the Cultural Series and Experiential Adventure Series, which both provide meaningful out of the classroom learning experiences. The Cultural Series introduces students to the world of art and performance by providing several opportunities each semester to experience visual art, music, theater and dance both locally and in larger Metropolitan areas such as New York City, Philadelphia and Washington DC. The Experiential Adventure program is an alternative learning experience designed to challenge students to engage in physically demanding activities that emphasize wellness and provide practical leadership tools and lessons on teamwork. Students will have the opportunity to sign up for adventures such as white water rafting, skydiving, hiking and mountain biking.

The Student Development Office also coordinates a weekend entertainment series, which gives students a variety of entertainment options to choose from each weekend. A few of the weekly attractions include free bowling, discounted movie and ski passes and free admittance to local performances at the Little Theater of Wilkes-Barre. In addition, Student Development also coordinates periodic day trips to professional sporting events and theme parks. Several of the University's clubs are listed below.

### **Clubs and Organizations**

Air Force ROTC	History Club	Rock Climbing Club
Air & Waste Mgt. Assn.	IEEE Club	Rowing Club
Alternative Spring Break	Indian Cultural Association	Running Club
Amnicola	International Services Club	Saudi Interest Club
Anime Club	Inter-Resident Hall Council	SAVE Club
ASME	Islamic Interest Society	Self Defense Club
BACCHUS	Lacrosse Club	SIFE (Students In Free Enterprise)
The Beacon	Marketing Club	Ski Club
Biology Club	MANUSCRIPT	Society for the Advancement SAM
Cheerleading	Math Club	Society of Automotive Engineers
Chemistry Club	MBA Student Association	Society of Women Engineers
Choral Club	Medieval Renaissance Club	Sociology Club
Christian Fellowship Club	MENC Music Club	Spanish Club
Circle K International	Multicultural Student Coalition	Step Club
College Democrats Club	Nursing Student Organization	Strategic Gaming Club
College Republicans	Off-Campus Council	Student Alumni Association
Comic Book Club	PA Pharmacists Association	Student Health Advisory
Communications Club	Paintball Club	Student Political Action Forum
Commuter Council	Pep Band	Students for Envir. Sustainability
Dance Team	Personal Finance Club	Television Club
Debate Society	Pool Players Club	Ultimate Frisbee
Delta Epsilon Chi	Pre-Law Club	Wilkes African Cultural Association
Earth and Envir. Sciences Club	Pre-Pharmacy Club	Wilkes in the World
Environmental Club	Pre-Professional Health Club	Wise Up
Equestrian Club	Programming Board	
Fencing Club	PSEA Education Club	
Free Spirit Club	Psychology Club	
Health & Fitness Club	Public Affairs Club	
Hindu Spirituality Club	Robotics Club	

## ***Leadership Institute***

The Student Affairs Leadership Institute, which functions as the coordinating body for all Student Affairs leadership programs, provides continuous opportunities to enhance the leadership skills of students and members of the community. By offering a variety of leadership programs that promote self-awareness, problem solving, service learning and multicultural issues, the Institute empowers students to explore their own personal leadership style. A few of the programs and services offered by the Institute include a Leadership Passport Program, Intercollegiate Leadership Wilkes-Barre, National Society of Leadership & Success Speaker Series, Sigma Alpha Pi Honor Society, Leadership Assessments and a Step-Up Rock Wall and Ropes courses.

The Leadership Development Center, which is one of the elements of the Institute, is located on the first floor of the Henry Student Center. The center contains a leadership library and provides space for small group activities and leadership training.

Source: Student Affairs

## ***University College Programs and Services***

ACT 101 Program	A program funded by the Pennsylvania Department of Education to provide academic support and guidance for eligible students.
Advising Services	University College coordinates services for faculty and students to support the advising process. This includes providing advising for “deciding” students and for those who intend to apply for restricted majors.
Career Services	The Office of Career Services offers comprehensive career education and support for professional career development for the Wilkes community.
Disability Services	The University College Learning Center (UCLC) coordinates the University's policies and support programs for students with disabilities.
First Year Program	A program for first-year students who may benefit from a guided transition to college studies.
Learning Skills Program	The UCLC offers workshops and presentations designed to support student success.
Prior Learning Assessment (PLA)	UC coordinates the process to award credit for life experience and serves as the point of contact for interested students.
Supplemental Instruction	Supplemental instruction is available for a number of courses for which review sessions have been deemed particularly beneficial.
Tutorial Services	The UCLC offers free assistance to all students enrolled at Wilkes. Tutoring is available in most courses at the introductory-level and in other courses as resources permit.
Upward Bound Program	This federally-funded program offers a comprehensive educational experience for financially-eligible high school students who are first-generation college-bound students.

Source: University College

## ***Community Service***

A liberal arts education teaches students to look at the world as a whole, to begin making connections between things like interpersonal conflict and international relations, between education and poverty, between thinking about themselves to thinking about “me in the world.” The Community Service Office coordinates projects that bridge service and study. Many academic departments offer service-learning courses that integrate classroom theory and hands-on experience with a pressing social issue. Students explore issues of hunger and homelessness, at-risk youth, access to health care, environmental sustainability, and countless other topics. The students of Wilkes partner with numerous organizations including Habitat for Humanity, the American Red Cross, the Commission on Economic Opportunity (CEO), Victims Resource Center, United Way, and the McGlynn Learning Center.

Students extend Wilkes’ spirit of service beyond local borders by volunteering during Alternative Fall Break in Philadelphia in the fall, and traveling domestically and internationally to serve during Spring Break. Most recently, Wilkes traveled to Kentucky to work with the Christian Appalachian Project, Dominican Republic to teach English as a second language, and to Costa Rica to work on a fair trade coffee co-op. In spring 2012 students will have the opportunity to choose between four locations. Students have the opportunity to travel to Kentucky to work with Christian Appalachian Project, a program that matches homeowners with building teams, Joplin, Missouri with Habitat for Humanity, Dominican Republic to work on public health programs and teach English as a second language in the school system with Orphanage Outreach. And for the third year the community service office is partnering with a political science faculty to sustain the Costa Rica service-learning experience with Community Collaborations. This past year we added an additional service trip in the summer to teach English as a second language in an impoverished village in Nicaragua. In extraordinary ways, Wilkes students are leading, mentoring, learning, and changing the world through service.

Source: Community Service

## ***Career Placement of 2010 Graduates***

Employed Full-time	64%
Graduate/Professional School, Full-time	25%
Part-time Graduate School/Work	1%
Part-time Work	7%
Military Career	1%
Seeking Employment	1%

Source: Career Services

## ***Athletics***

Wilkes sponsors an active intramural sports program as well as intercollegiate competition in 16 varsity sports. Varsity teams compete at the Division III level. The University is a member of the National Collegiate Athletic Association (NCAA), Middle Atlantic Conference (MAC), the Freedom Conference, the Eastern Collegiate Athletic Conference (ECAC), and the Metropolitan Conference for Wrestling. There were 334 student athletes on the roster for the 2010-11 season.

### **Varsity Programs**

#### **Men**

Baseball  
Basketball  
Cross-Country  
Football  
Golf  
Soccer  
Tennis  
Wrestling

#### **Women**

Basketball  
Field Hockey  
Cross-Country  
Lacrosse  
Soccer  
Softball  
Tennis  
Volleyball

### **Athletic Department Statistics 2010-11**

	<b><u>Wins</u></b>	<b><u>Losses</u></b>	<b><u>Ties</u></b>
Baseball	21	16	
Men's Basketball	15	10	
Women's Basketball	6	19	
Field Hockey	5	11	
Football	6	5	
Lacrosse	3	14	
Men's Soccer	5	14	
Women's Soccer	6	11	2
Softball	7	25	
Men's Tennis	11	4	
Women's Tennis	16	2	
Volleyball	10	20	
Wrestling	15	10	2
Golf	Tournament Play		

## FACULTY and STAFF

### *Staff by Category and Gender*

Fall 2011							Fall 2010
	Admin.	Clerical	Maint./ Custodial	Security	Coach	Total	Total
<b>Full-time Staff</b>							
Male	80	1	30	9	8	128	123
Female	127	56	12	4	2	201	198
<b>Total</b>	<b>207</b>	<b>57</b>	<b>42</b>	<b>13</b>	<b>10</b>	<b>329</b>	<b>321</b>
<b>Part-time Staff</b>							
Male	15	1	2	6	3	27	30
Female	19	5	0	0	0	24	24
<b>Total</b>	<b>34</b>	<b>6</b>	<b>2</b>	<b>6</b>	<b>3</b>	<b>51</b>	<b>54</b>
<b>Total Staff</b>							
Male	95	2	32	15	11	155	153
Female	146	61	12	4	2	225	222
<b>Total</b>	<b>241</b>	<b>63</b>	<b>44</b>	<b>19</b>	<b>13</b>	<b>380</b>	<b>375</b>

## Faculty by Gender and Tenure Status

Full-time Faculty	Fall 2011			Fall 2010
	Male	Female	Total	Total
Professors***	26	6	32	32
Associate Professors	35	31	66	56
Assistant Professors*	20	31	51	59
Instructors	0	1	1	1
Visiting**	4	3	7	9
<b>Total Full-time Faculty</b>	<b>85</b>	<b>72</b>	<b>157</b>	<b>157</b>

\* Includes one  $\frac{3}{4}$  Asst. Prof. and two  $\frac{1}{2}$  Asst. Prof.

\*\*Includes one  $\frac{3}{4}$  Visiting Instructor, two Visiting Instructors, four Visiting Asst. Prof.

\*\*\*Includes one  $\frac{1}{2}$  Professor

	Fall 2011			Fall 2010
	Male	Female	Total	Total
<b>Tenured</b>				
Professor	25	6	31	32
Professor $\frac{1}{2}$ -time	1	0	1	0
Associate Professor	34	28	62	52
Assistant Professor	1	0	1	1
<b>Total Tenured</b>	<b>61</b>	<b>34</b>	<b>95</b>	<b>85</b>
<b>Tenure Track</b>				
Professor	0	0	0	0
Associate Professor	1	3	4	3
Assistant Professor	18	27	45	52
<b>Total Tenure Track</b>	<b>19</b>	<b>30</b>	<b>49</b>	<b>55</b>
<b>Not on Tenure Track</b>				
Associate Professor $\frac{1}{2}$ -time	0	0	0	1
Assistant Professor	1	1	2	3
Assistant Professor $\frac{3}{4}$ - time	0	1	1	2
Assistant Professor $\frac{1}{2}$ - time	0	2	2	1
Instructor	0	1	1	0
Instructor $\frac{3}{4}$ -time	0	0	0	1
<b>Total Not on Tenure Track</b>	<b>1</b>	<b>5</b>	<b>6</b>	<b>8</b>
<b>Visiting</b>				
Associate Professor	0	0	0	0
Assistant Professor	2	2	4	4
Instructor	1	1	2	3
Instructor $\frac{3}{4}$ - time	1	0	1	2
<b>Total Visiting</b>	<b>4</b>	<b>3</b>	<b>7</b>	<b>9</b>
<b>Total Full-time Faculty</b>	<b>85</b>	<b>72</b>	<b>157</b>	<b>157</b>



<b>Part-time Faculty</b>	<b>Fall 2011</b>			<b>Fall 2010</b>
<b>Not on Tenure Track</b>	<b>Male</b>	<b>Female</b>	<b>Total</b>	<b>Total</b>
Undergraduate	52	47	99	101
Graduate	89	68	157	199
ESL	0	1	1	5
Music Conservatory	0	2	2	3
<b>Total Part-time Faculty</b>	<b>141</b>	<b>118</b>	<b>259</b>	<b>308</b>

### ***Full-time Faculty by Department***

<b>Department</b>	<b>Prof.</b>	<b>Assoc. Prof.</b>	<b>Asst. Prof.</b>	<b>Instr.</b>	<b>Visiting</b>	<b>Total</b>	<b>Tenured</b>	<b>On Tenure Track</b>
<b>Biology &amp; Health Sciences</b>	3	4	4	0	0	11	7	4
<b>Behavioral &amp; Social Sciences</b>	5	5	3	0	1	14	10	3
<b>Business</b>	4	4	5	1	0	14	8	5
<b>Chemistry</b>	0	5	2	0	0	7	5	2
<b>Communication Studies****</b>	2	2	1	0	1	6	4	1
<b>Education</b>	1	4	9	0	0	14	3	11
<b>Engineering &amp; Physics*****</b>	7	0	3	0	1	11	8	2
<b>Environmental Engr. &amp; Earth Sci.</b>	3	3	0	0	0	6	6	0
<b>Humanities**</b>	1	9	5	0	2	17	10	5
<b>Integrative Media</b>	0	2	1	0	0	3	1	1
<b>Math &amp; Computer Science***</b>	3	6	0	0	2	11	9	0
<b>Nursing</b>	0	5	11	0	0	16	5	10
<b>Pharmacy*</b>	3	14	6	0	0	23	16	4
<b>Performing Arts</b>	0	3	1	0	0	4	3	1
<b>Total</b>	<b>32</b>	<b>66</b>	<b>51</b>	<b>1</b>	<b>7</b>	<b>157</b>	<b>95</b>	<b>49</b>

\* Includes two ½ Asst. Prof., and one ¾ Asst. Prof.

\*\* Includes one Visiting Asst. Prof., one Visiting Instructor

\*\*\* Includes one Visiting Asst. Prof., one ¾ Visiting Instructor, one ½ Professor

\*\*\*\* Includes one Visiting Instructor

\*\*\*\*\* Includes one Visiting Asst. Prof.

### ***Full-time Faculty Degrees***

<b>Full-time Faculty with Doctorates</b>	<b>Male</b>		<b>Female</b>		<b>Total</b>	
	<b>N</b>	<b>%</b>	<b>N</b>	<b>%</b>	<b>N</b>	<b>%</b>
Professors	26	100%	6	100%	32	100%
Associate Professors	32	91%	29	94%	61	92%
Assistant Professors	18	90%	20	65%	38	75%
Instructors	0	0%	0	0%	0	0%
Visiting	2	50%	2	67%	4	57%
<b>Total</b>	<b>78</b>	<b>92%</b>	<b>57</b>	<b>79%</b>	<b>135</b>	<b>86%</b>

<b>Full-time Faculty with Terminal Degrees*</b>	<b>Male</b>		<b>Female</b>		<b>Total</b>	
	<b>N</b>	<b>%</b>	<b>N</b>	<b>%</b>	<b>N</b>	<b>%</b>
Professors	26	100%	6	100%	32	100%
Associate Professors	33	94%	31	100%	64	97%
Assistant Professors	18	90%	22	71%	40	78%
Instructors	0	0%	0	0%	0	0%
Visiting	2	50%	2	67%	4	57%
<b>Total</b>	<b>79</b>	<b>93%</b>	<b>61</b>	<b>85%</b>	<b>140</b>	<b>89%</b>

*\*Terminal degrees are Master of Business Administration/CPA and Master of Fine Arts.*

## ***Faculty and Staff by Ethnicity***

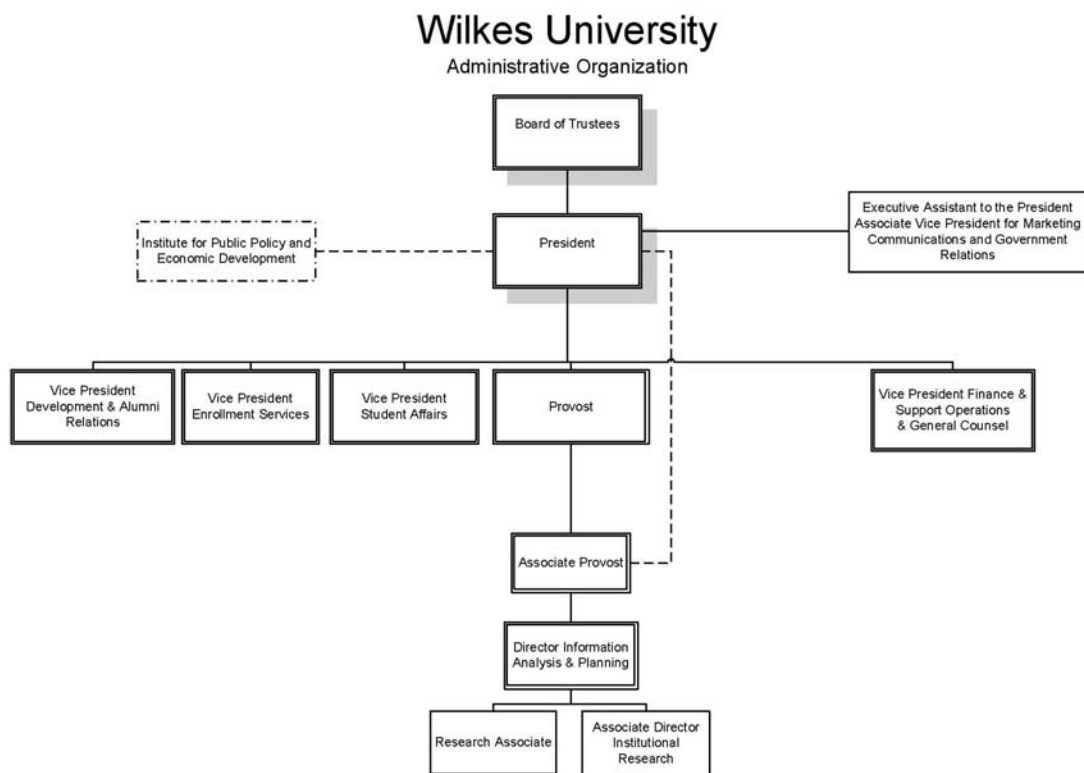
<b>Faculty</b>	<b>Full-time</b>		<b>Part-Time</b>	
White	136	86.6%	244	94.2%
American Indian/Alaskan	1	0.6%	0	0.0%
Asian	6	3.8%	4	1.5%
Black	1	0.6%	0	0.0%
Hawaiian/Pacific Isl.	0	0.0%	0	0.0%
Hispanic	4	2.5%	2	0.8%
Non-Resident Alien	7	4.5%	0	0.0%
Two or more races	0	0.0%	1	0.4%
Unspecified	2	1.3%	8	3.1%
<b>Total Faculty</b>	<b>157</b>	<b>100.0%</b>	<b>259</b>	<b>100.0%</b>

<b>Staff</b>	<b>Full-time</b>		<b>Part-Time</b>	
White	309	93.9%	44	86.3%
American Indian/Alaskan	1	0.3%	0	0.0%
Asian	2	0.6%	1	2.0%
Black	7	2.1%	2	3.9%
Hawaiian/Pacific Isl.	0	0.0%	0	0.0%
Hispanic	3	0.9%	0	0.0%
Non-Resident Alien	1	0.3%	0	0.0%
Two or more races	3	0.9%	1	2.0%
Unspecified	3	0.9%	3	5.9%
<b>Total Staff</b>	<b>329</b>	<b>100.0%</b>	<b>51</b>	<b>100.0%</b>

<b>Total University</b>	<b>Full-time</b>		<b>Part-Time</b>	
White	445	91.6%	288	92.9%
American Indian/Alaskan	2	0.4%	0	0.0%
Asian	8	1.6%	5	1.6%
Black	8	1.6%	2	0.6%
Hawaiian/Pacific Isl.	0	0.0%	0	0.0%
Hispanic	7	1.4%	2	0.6%
Non-Resident Alien	8	1.6%	0	0.0%
Two or more races	3	0.6%	2	0.6%
Unspecified	5	1.0%	11	3.5%
<b>Total University</b>	<b>486</b>	<b>100.0%</b>	<b>310</b>	<b>100.0%</b>

# ORGANIZATIONAL CHARTS

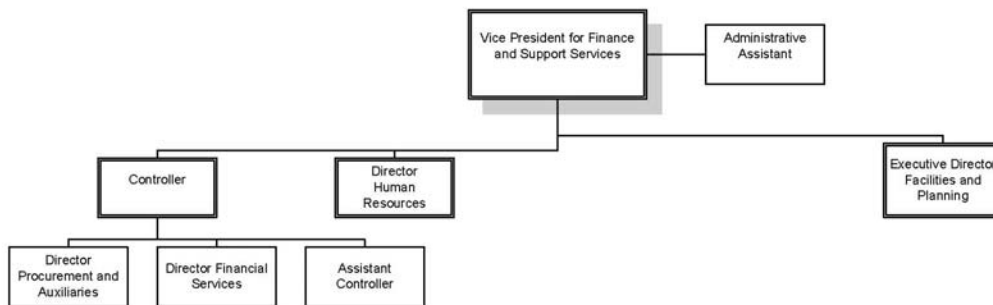
## *Administrative*



November 2011

## ***Finance and Support Operations***

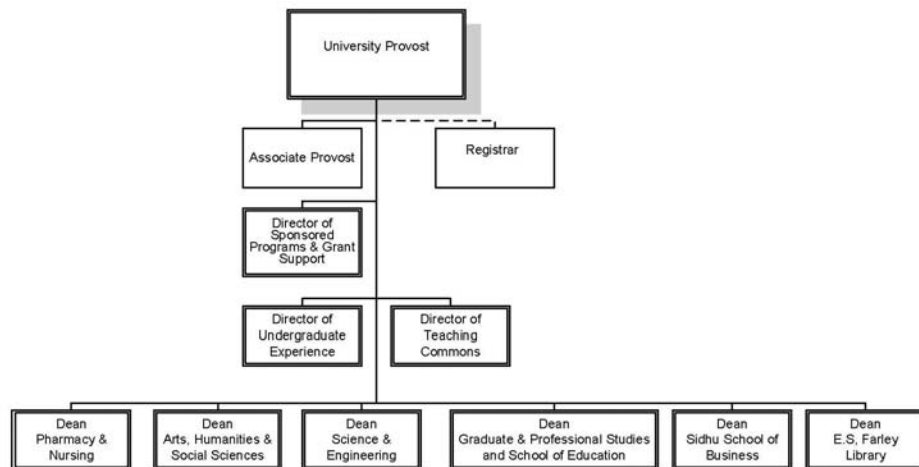
### **Wilkes University** Finance and Support Operations



November 2011

## Provost

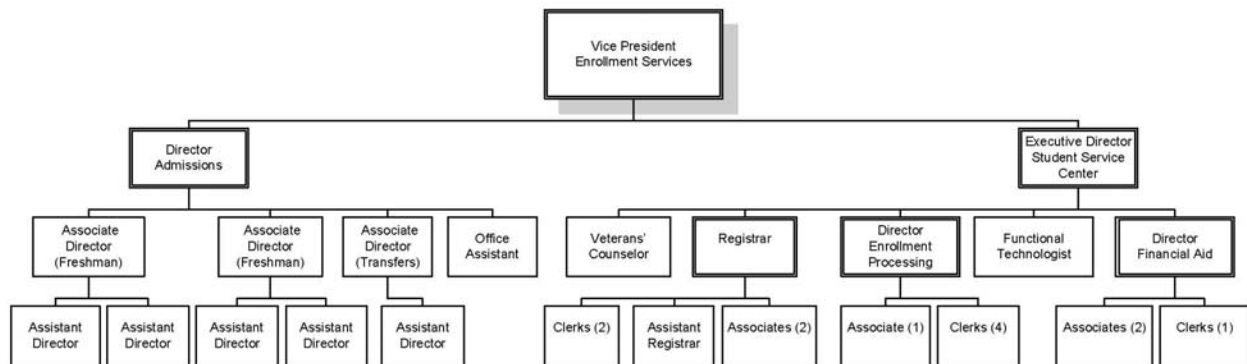
### Wilkes University Provost



November 2011

## Enrollment Services

### Wilkes University Enrollment Services

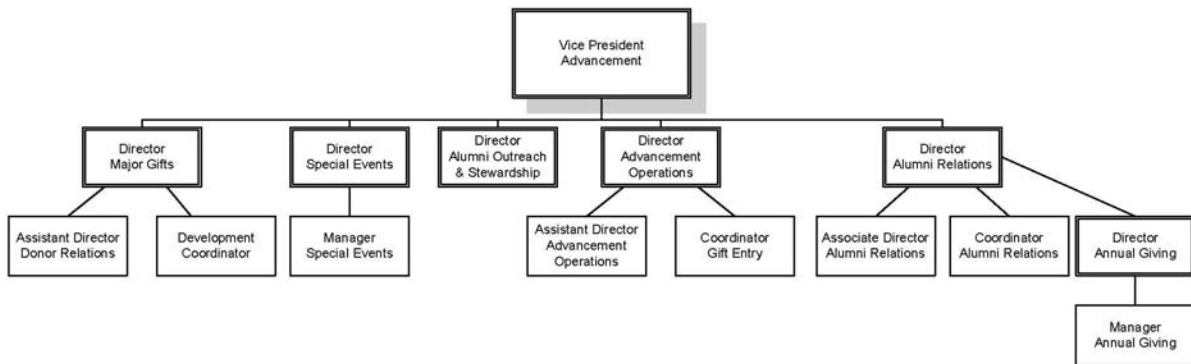


November 2011



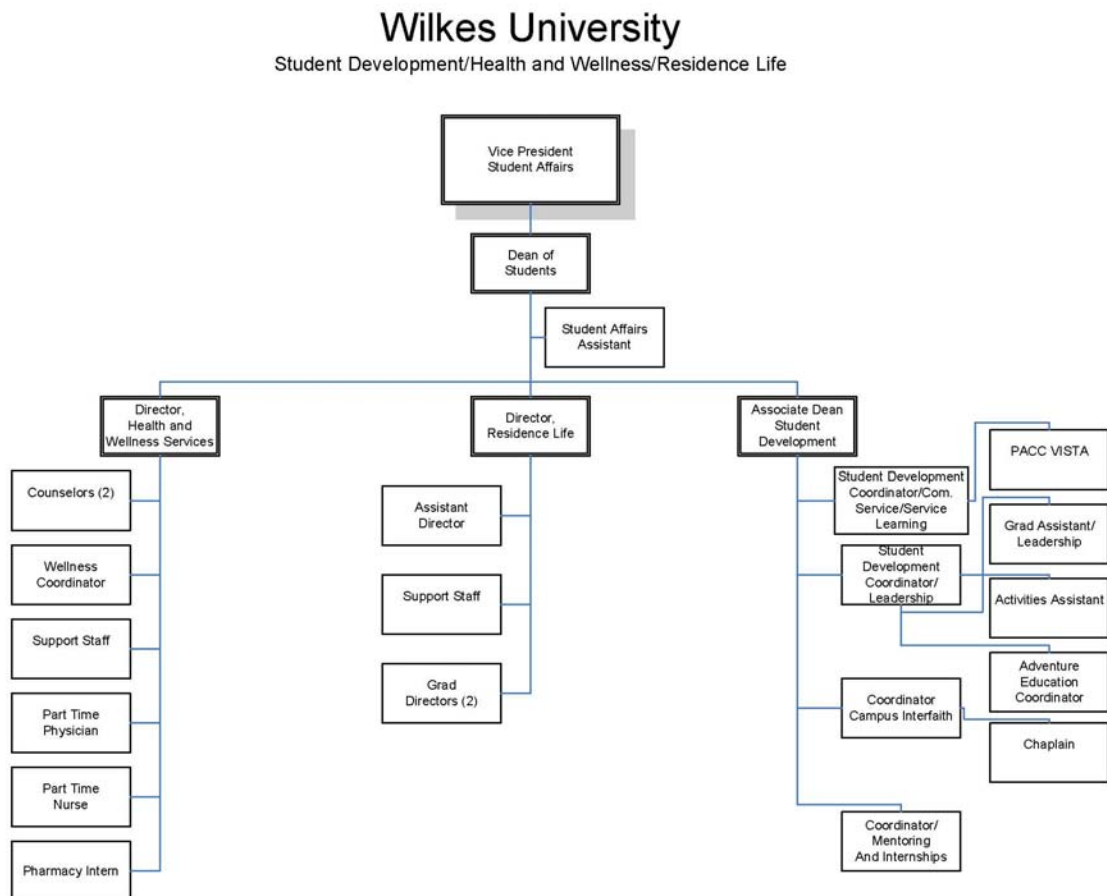
## Advancement

### Wilkes University Advancement



November 2011

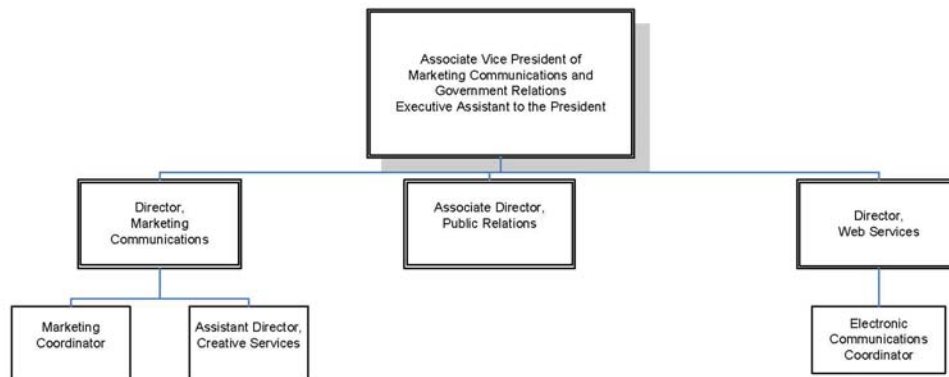
## Student Development



November 2011

## Marketing/Communications

### Wilkes University Marketing/Communications



November 2011

## FINANCES

### *Statement of Activities\**

	<b>FY 2010</b>	<b>FY 2011</b>
	<b>AMOUNT</b>	<b>AMOUNT</b>
<b>REVENUES AND OTHER SUPPORT</b>		
Tuition and Fees	\$ 83,484,765	\$ 84,469,184
Less Scholarship Aid	(23,001,751)	(24,160,630)
<b>NET TUITION &amp; FEES</b>	<b>60,483,014</b>	<b>60,308,554</b>
Government Grants and Contracts	3,839,604	3,902,300
Private Gifts, Grants & Contracts	2,019,755	1,618,055
Sales and Services of Auxiliary Enterprises	9,356,727	8,868,284
Income from Interest and Dividends	462,275	497,909
Other Additions	1,135,381	802,050
Endowment Income Designated for Current Operations	1,675,095	1,363,000
<b>TOTAL REVENUES AND OTHER SUPPORT</b>	<b>\$ 78,971,851</b>	<b>\$77,360,152</b>
<b>EXPENDITURES</b>		
Instruction	\$ 33,491,387	\$ 34,509,427
Research	1,571,741	1,560,298
Public Service	962,284	1,092,103
Academic Support	9,634,933	9,218,770
Student Services	10,809,978	11,159,312
Institutional Support	13,235,626	13,394,233
Auxiliary Enterprises	7,355,597	7,302,066
<b>TOTAL EXPENSES</b>	<b>\$ 77,061,546</b>	<b>\$ 78,236,209</b>
 Increase in Net Assets from Operating Activities	 \$ 1,910,305	 \$ (876,057)
<b>NON-OPERATING INCOME (EXPENSES)</b>		
Private Gifts and Grants	652,421	2,544,928
Net Investment Return After Application of Spending Policy	2,493,304	5,137,075
Changes in Liabilities Under Split Interest Agreements and Perpetual Trusts	476,339	839,160
Impairment Charge	-	(203,671)
Increase(Decrease) in Net Assets from Non-Operating Activities	\$ 3,622,064	\$ 8,317,492
<b>TOTAL CHANGE IN NET ASSETS</b>	<b>\$ 5,532,369</b>	<b>\$ 7,441,435</b>
Net Assets, Beginning of Year	\$ 68,214,413	\$ 73,746,782
Net Assets, End of Year	\$ 73,746,782	\$ 81,188,217

*\*Information is from Audited Financial Statements. Note that the 2010 figures have been restated for the FY 11 statements.*

Source: Controller's Office

## ***Endowment and Other Long-Term Investments***

(At fair market value)

	<u>5/31/2010</u>	<u>5/31/2011</u>
<b>Endowment and Similar Funds:</b>		
Cash and cash equivalents	\$ 1,351,913	\$ 2,710,769
Fixed income investments	7,798,485	7,917,353
Common, preferred stocks and equity funds	18,686,858	22,257,478
Alternative investments	<u>4,829,817</u>	<u>5,264,234</u>
Total	<u>\$ 32,667,073</u>	<u>\$ 38,149,834</u>
 Annuity and Life Income Funds:		
Cash and cash equivalents	\$ 52,624	\$ 8,131
Bonds, notes and bond funds	143,120	153,998
Common, preferred stocks and equity funds	331,213	389,100
Alternative Investments	<u>57,975</u>	<u>82,137</u>
Total	<u>\$ 584,932</u>	<u>\$ 633,366</u>
 <b>Total Endowment and Similar Funds</b>	 <u><b>\$ 33,252,005</b></u>	 <u><b>\$ 38,783,200</b></u>
 <b>Investments:</b>		
<b>Current Funds:</b>		
Cash and cash equivalents	\$ 29,773	\$ 14,774
Bonds, notes and bond funds	202,159	223,229
Common, preferred stocks and equity funds	<u>345,997</u>	<u>422,494</u>
Total Investments	<u>\$ 577,929</u>	<u>\$ 660,497</u>
 Deposits with Bond Trustee:		
Cash and cash equivalents	\$ 2,194,252	\$ 2,194,475
Total Deposits	<u>\$ 2,194,252</u>	<u>\$ 2,194,475</u>
 <b>Total Endowment, Investments and Similar Funds</b>	 <u><b>\$ 36,024,186</b></u>	 <u><b>\$ 41,638,172</b></u>

## ***Tuition, Fees, Room and Board Charges***

		<b><u>FY2009</u></b>	<b><u>FY2010</u></b>	<b><u>FY 2011</u></b>	<b><u>FY2012</u></b>
<b>FULL-TIME</b>	<b>UNDERGRADUATE (Annual):</b>				
Tuition:	Full-time Tuition (12-18 Credits per semester)	<u>\$23,850</u>	<u>\$24,690</u>	<u>\$25,802</u>	<u>\$26,834</u>
Fees:	General University Fee	\$710	\$710	\$736	\$1,376
	Student Activity Fee	230	230	244	-
	Technology Fee	270	270	282	-
	Student Union Fee	50	50	52	-
	Recreation Fee	60	60	62	-
	<b>Total Fees</b>	<u>\$1,320</u>	<u>\$1,320</u>	<u>\$1,376</u>	<u>\$1,376</u>
	<b>Total Tuition &amp; Fees</b>	<u>\$25,170</u>	<u>\$26,010</u>	<u>\$27,178</u>	<u>\$28,210</u>
<b>PART-TIME</b>	<b>(Per Credit Hour)</b>				
	Tuition	\$660	\$685	\$715	\$745
	General University Fee	30	30	31	62
	Technology Fee	30	30	31	-
	<b>Total Cost</b>	<u>\$720</u>	<u>\$745</u>	<u>\$777</u>	<u>\$807</u>
<b>FULL-TIME</b>	<b>FIRST PROFESSIONAL (Annual):</b>				
Tuition:	Full-time Tuition (12-18 Credits per semester)	<u>\$25,350</u>	<u>\$26,240</u>	<u>\$27,422</u>	<u>\$28,520</u>
Fees:	General University Fee	\$710	\$710	\$736	1,376
	Pharmacy Clerkship Fee	840	960	1,000	1,000
	Student Activity Fee	230	230	244	-
	Technology Fee	270	270	282	-
	Student Union Fee	50	50	52	-
	Recreation Fee	60	60	62	-
	<b>Total Fees</b>	<u>\$2,160</u>	<u>\$2,280</u>	<u>\$2,376</u>	<u>\$2,376</u>
	<b>Total Tuition &amp; Fees</b>	<u>\$27,510</u>	<u>\$28,520</u>	<u>\$29,798</u>	<u>\$30,896</u>
<b>ROOM AND BOARD</b>					
Room:	Residence Hall - Apartment Style	\$7,180	\$7,400	\$7,630	\$7,782
	Residence Hall - Dorm	6,490	6,680	6,880	7,018
	Residence Hall – Single Room	6,820	7,020	7,230	7,374
Board:	Colonel Gold Plus (19 meals per week)	\$4,290	\$4,420	\$4,590	\$4,680
	Colonel Blue Plus	3,860	3,980	4,110	4,186
	Colonel Gold	4,190	4,320	4,490	4,580
	Colonel Blue	3,650	3,760	3,910	3,986
	Senior	2,160	1,920	2,000	2,042

(Continued on following page)

## ***Tuition, Fees, Room and Board Charges (continued)***

	<b><u>FY2009</u></b>	<b><u>FY2010</u></b>	<b><u>FY 2011</u></b>	<b><u>FY2012</u></b>
<b>GRADUATE (Per Credit Hour):</b>				
Tuition	\$795	\$795	\$795	\$811
General University Fee	30	30	31	62
Technology Fee	30	30	31	-
Total Cost	<u>\$855</u>	<u>\$855</u>	<u>\$857</u>	<u>\$873</u>

### **GRADUATE (Per Credit Hour) Education Program**

Tuition-Summer	\$345	\$357	\$370	\$484
Tuition-Fall/Spring	357	370	377	494

### **GRADUATE (Per Credit Hour) MBA Program**

Tuition	\$715	\$715	\$725	\$740
General University Fee	30	30	31	62
Technology Fee	30	30	31	-
Total Cost	<u>\$775</u>	<u>\$775</u>	<u>\$787</u>	<u>\$802</u>

### **GRADUATE (Per Credit Hour) Creative Writing Program**

Tuition	\$590	\$608	\$610	\$622
General University Fee	30	30	31	62
Technology Fee	30	30	31	-
Total Cost	<u>\$650</u>	<u>\$668</u>	<u>\$672</u>	<u>\$684</u>

### **GRADUATE (Per Credit Hour) Ed. D. Program**

Tuition-Fall.Spring	\$430	\$463	\$471	\$494
---------------------	-------	-------	-------	-------

## ***Tuition Comparison, Wilkes and Other Institutions***

<b>Tuition and Fees</b>	<b><u>2008-09</u></b>	<b><u>2009-10</u></b>	<b><u>2010-11</u></b>	<b><u>2011-12</u></b>	<b><u>% most recent increase</u></b>
<b>Wilkes University</b>	<b>\$25,170</b>	<b>\$26,010</b>	<b>\$27,178</b>	<b>\$28,210</b>	<b>3.8%</b>
Bloomsburg University	6,848	7,110	7,456	8,082	8.4%
Drexel University	30,440	31,835	33,005	34,505	4.5%
Duquesne University	25,475	26,468	27,502	28,671	4.3%
East Stroudsburg University	7,090	7,394	7,778	8,350	7.4%
Elizabethtown College	30,650	31,800	33,250	34,830	4.8%
Fairleigh Dickinson University (Main Campus)	27,784	29,066	31,060	32,973	6.2%
King's College	24,680	25,644	26,644	27,680	3.9%
Kutztown University	7,126	7,398	7,732	8,359	8.1%
Lebanon Valley College	29,350	30,490	31,620	33,200	5.0%
Lock Haven University	6,917	7,201	7,540	8,239	9.3%
Luzerne County Community College (30 cr hrs)	2,880	3,090	3,090	3,150	1.9%
Lycoming College	28,764	29,894	30,800	31,738	3.0%
Mansfield University	7,359	7,756	8,058	8,654	7.4%
Marywood University	25,390	26,270	27,150	28,175	3.8%
Millersville University	6,866	7,147	7,700	8,361	8.6%
Misericordia University	23,150	24,050	24,990	25,990	4.0%
Moravian College	30,062	31,250	32,177	33,446	3.9%
Penn State University- University Park***	13,706	14,416	15,250	15,984	4.8%
Penn State Wilkes-Barre***	11,700	12,150	12,616	12,994	3.0%
Rutgers University (New Brunswick)**	11,560	11,886	12,582	12,754	1.4%
Shippensburg University	7,099	7,444	8,056	8,856	9.9%
Susquehanna University	31,080	32,450	34,070	35,860	5.3%
Temple University	11,448	11,764	12,424	13,596	9.4%
University of Delaware*	21,126	23,186	25,408	27,462	8.1%
University of Pittsburgh	13,642	14,154	14,936	16,132	8.0%
University of Scranton	31,576	33,124	34,536	36,042	4.4%
University of the Sciences in Philadelphia	28,506	29,630	30,794	32,148	4.4%
West Chester University	6,737	7,211	7,680	8,275	7.7%

\* *Non-resident tuition*

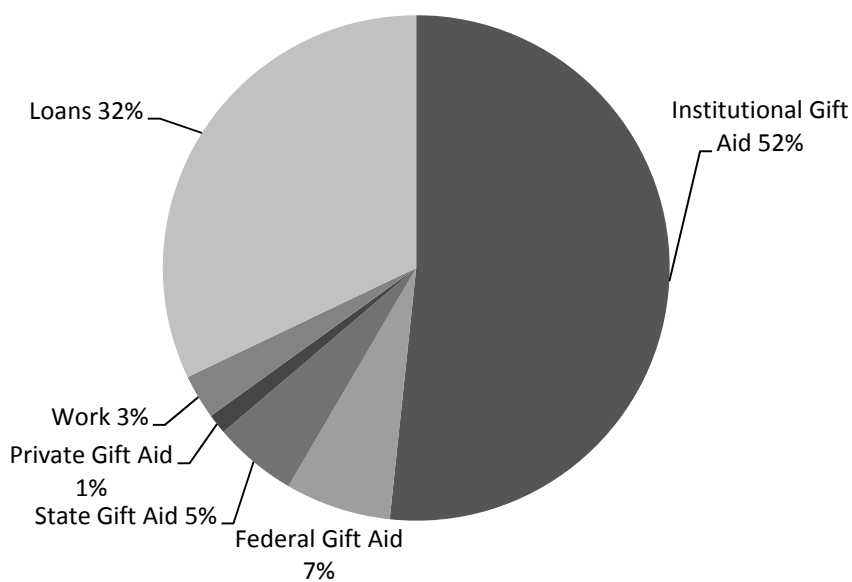
\*\* *NJ resident*

\*\*\* *PA resident*



## Student Financial Aid

### Financial Aid Awarded to Fall 2011 Full-Time Undergraduate Students\* by Source



Percentage of Full-Time Undergraduates* Awarded Some Form of Financial Aid	93.6%
Percentage of First-Time Full-Time Freshmen Awarded Some Form of Financial Aid	97.8%
Average Financial Aid Package Awarded to Full-Time Undergraduate Students* (including work study and loans to students)	\$25,982
Percentage of 2011 Bachelor's Degree Recipients Who Borrowed	83.3%
Estimated Average Indebtedness of 2011 Bachelor's Degree Recipients Who Borrowed	\$35,684
Percentage of 2011 Doctor of Pharmacy (D.Ph.) Degree Recipients Who Borrowed	88.6%
Estimated Average Indebtedness of 2011 D.Ph. Degree Recipients Who Borrowed	\$82,885

\* Includes first- and second-year students in the School of Pharmacy

## ***Wilkes Alumni***

### **Alumni by Graduation Year**

<b>Graduation Year</b>	<b>Total Graduates</b>	<b>Advanced Degrees</b>	<b>Undergraduate Degrees</b>	<b>Undergraduate Alumni of Record</b>	<b>% of Solicitable Undergraduates</b>
<b>1935 – 1939</b>	354	1	353	30	22.22%
<b>1940 – 1949</b>	1,182	0	1,182	263	41.42%
<b>1950 - 1959</b>	2,784	2	2,782	1,006	52.81%
<b>1960 - 1969</b>	3,363	20	3,343	2,253	77.37%
<b>1970 - 1979</b>	5,375	281	5,094	3,726	77.37%
<b>1980 - 1989</b>	5,453	728	4,725	3,851	83.81%
<b>1990 - 1999</b>	5,897	1,279	4,618	4,237	92.86%
<b>2000 - 2009</b>	11,101	6,855	4,246	3,972	93.90%
<b>2010 - 2011</b>	3,669	2,804	865	856	99.07%
<b>TOTAL</b>	<b>39,178</b>	<b>11,970</b>	<b>27,208</b>	<b>20,194</b>	<b>81.91%</b>

\* **Solicitable alumni** includes undergraduate excludes advanced degrees, deceased, inactive home addresses & those requesting no contact or solicitation.

### **Alumni Giving**

	<b>2006-07</b>	<b>2007-08</b>	<b>2008-09</b>	<b>2009-10</b>	<b>2010-11</b>
<b>Undergraduate Alumni of Record</b>	16,609	17,029	17,762	18,710	19,955
<b>Undergraduate Alumni Donors</b>	2,517	2,580	2,538	2,618	2,640
<b>Alumni Giving Rate</b>	15.1%	15.1%	14.3%	14.0%	13.2%

Source: Advancement Division

***Funds Raised***  
**(Cash Basis)**

<b><u>By Source</u></b>	<b><u>FY2010</u></b>	<b><u>FY2011</u></b>
Alumni	\$ 929,068	\$878,976
Parents	-	-
Other	2,996,812	413,010
Foundations	365,304	250,060
Corporation/Business	442,096	359,531
<b>Total</b>	<b><u>\$ 4,733,280</u></b>	<b><u>\$1,901,577</u></b>

<b><u>By Purpose</u></b>	<b><u>FY2010</u></b>	<b><u>FY2011</u></b>
Unrestricted	\$ 465,382	\$571,265
Academic Divisions	7,727	19,383
Public Service	155,250	197,470
Library	82,339	5,264
Physical Plant	1,525	3,602
Student Financial Aid	1,838,236	123,226
Other Restricted	255,749	266,227
Property	10,000	5,000
Endowment (restricted)	1,841,617	559,219
Endowment (unrestricted)	2,594	2,474
Research	20,250	250
Athletics	52,611	148,197
<b>Total</b>	<b><u>\$ 4,733,280</u></b>	<b><u>\$1,901,577</u></b>

Source: Advancement Division

## **FACILITIES**

### **Building Inventory – Assignable Square Footage**

<b>Buildings:</b>	<b>Admin</b>	<b>Classrooms, Labs, Galleries, Studios</b>	<b>Faculty Offices</b>	<b>Residence Halls</b>	<b>Other Aux. Buildings</b>	<b>Total</b>
Allan P. Kirby Center	1,800				1,200	3,000
Annette Evans House	1,018					1,018
Barre Hall*				7,553		7,553
Bedford Hall	1,200	2,487	848			4,535
Breiseth Hall	2,000	18,880	10,000			30,880
Capin Hall	971	450	3,756			5,177
Catlin Hall				5,097		5,097
Ceramics Studio		1,800				1,800
Chase Hall	3,973					3,973
Conyngham Hall	1,898					1,898
Darte Center	437		661		9,000	10,098
Darte Hall	975	14,529	4,870			20,374
Doane Hall*				3,353		3,353
Evans Hall				41,724	1,421	43,145
Facilities & Support Operations	14,000					14,000
Farley Library					45,282	45,282
Fenner Hall	350				800	1,150
Fortinsky Hall*				11,718		11,718
Henry Student Center					48,000	48,000
Hollenback Hall	2,978					2,978
Kirby Hall	610	2,031	3,621			6,262
Marts Center	1,000	7,775			46,654	55,429
McCole House					8,300	8,300
Moat/Miner Hall					1,500	1,500
Munson Field House	400	800			38,000	39,200
O'Hop Hall					3,772	3,772
Parking Garage	4,500				104,832	109,332
Passan Hall	9,815					9,815
Pearsall Hall		1,500	5,100			6,600
Rifkin Hall				10,000		10,000
Ross Hall*				2,792		2,792
Roth Center	12,340					12,340
Roth Residence Hall				18,152		18,152
Schiowitz Hall				11,356		11,356
Slocum Hall	6,107					6,107
Stark Learning Center	2,127	111,655	14,610			128,392
Sterling Hall				5,355		5,355
Sturdevant Hall				7,329		7,329
Sullivan Hall				5,852		5,852

(Continued on following page)

***FACILITIES (continued)***

<b>Buildings:</b>	<b>Admin</b>	<b>Classrooms, Labs, Galleries, Studios</b>	<b>Faculty Offices</b>	<b>Residence Halls</b>	<b>Other Aux. Buildings</b>	<b>Total</b>
UCoM	43,000	36,000			2,000	81,000
University Tower				103,214	66,786	170,000
Waller North & South				18,771		18,771
Weckesser Hall & Annex					13,691	13,691
Weiss Hall				4,487		4,487
30 West River St.					5,802	5,802
70-72 Wright St.					7,200	7,200
247 South Franklin St.*					6,100	6,100
245 South River St			2,500		6,875	9,375
258 South River St.*					3,000	3,000
321-323 South River St.*				5,400		5,400
325-327 South River St.*				5,965		5,965
339 South River St.*				3,164		3,164
<b>Total</b>	<b>114,499</b>	<b>197,907</b>	<b>45,966</b>	<b>271,282</b>	<b>420,215</b>	<b>1,046,869</b>

*\* Building is offline*

Source: Capital Projects & Planning

## ***Eugene S. Farley Library***

### **Fall 2011 Resources:**

#### **Print Collection**

Total Books	181,792
Book Additions	3,763
Total Bound Periodicals	8,573
Total Unbound Periodicals	11,571
Current Print Subscriptions	339
Microformats	16,023

#### **A-V Collection**

DVD's	1,167
VHS	887
CD Books	104

#### **Digital Resources**

Online Journals	35,043
Licensed Databases	29

#### **Expenditures (\$)**

Books & Monographs	36,728
Periodicals, subscriptions, electronic resources	329,311
A-V Resources	2,535

#### **Usage Statistics**

Total Circulations	17,806
Turnstile Count	218,808
Interlibrary Loans	2175
Information Literacy Classes	121
Reference Questions	2,033

#### **Computers**

Desktops Available	55
Laptops Available	14
Laptop Loans	4,772
Instructional Desktops	3
Ipads	4

#### **Staff**

Professional Librarians	5
Technicians	10

## ***Computing Inventory***

### **Computers Available for Student Use**

Closed labs, classrooms, clubs	603
--------------------------------	-----

Open access labs	106
------------------	-----

<b>Computers Available for Administrative &amp; Faculty Use</b>	<u>918</u>
---	------------

<b>Total</b>	<b>1,627</b>
--------------	--------------

<b>Servers</b>	82
----------------	----

<b>Storage</b>	37 Terabytes
----------------	--------------

<b>Network Printers</b>	130
-------------------------	-----

Source: Information Technology Services

## ***ACCREDITATIONS***

### **Regional:**

Middle States Association of Colleges and Schools

### **Professional:**

American Chemical Society

Commission on Collegiate Nursing Education

Engineering Accreditation Commission

Accreditation Board of Engineering and Technology

Accreditation Council for Business Schools and Programs

Accreditation Council for Pharmaceutical Education

## **GLOSSARY**

### **Census Date**

The completion of six weeks of classes

### **First-Generation Student**

A student whose parents have never enrolled in college

### **First-Professional Program**

The First-Professional Program requires the completion of the academic requirements to begin practice in the profession; at least two years of college work prior to entering the program; and a total of at least six academic years of college work to complete the degree program, including prior required college work plus the length of the professional program itself.

### **First-Professional Student**

A student enrolled in the Pharmacy Program

### **First-Time Freshman**

An entering freshman who has never attended any college. Includes students enrolled in the fall term who attended for the first time in the prior summer term. Includes students who entered with advanced standing (college credits earned before graduation from high school).

### **FTE (Full-Time Equivalent)**

A full-time Undergraduate, Graduate, or First-Professional Student is equivalent to one FTE

Part-time Undergraduate and First-Professional FTE is calculated by dividing part-time registered credits by fifteen

Part-time Graduate FTE is calculated by dividing part-time registered credits by nine

### **Full-time Student**

Undergraduate and First-Professional - A student enrolled for twelve or more semester credits each term

Graduate - A student enrolled for nine or more semester credits

### **Graduate Student**

A student who holds a bachelor's or first-professional degree, or equivalent, and is taking courses at the post-baccalaureate level

### **Nonresident Alien**

A person who is not a citizen or national of the United States and who is in this country on a visa or temporary basis and does not have the right to remain indefinitely

### **Part-time Student**

Undergraduate and First-Professional - A student enrolled for less than twelve credits

Graduate - A student enrolled for less than nine credits

### **Tenure**

Status of a personnel position, or a person occupying a position or occupation, with respect to permanence of the position

### **Tenure Track**

Status of personnel positions that lead to consideration for tenure

### **Undergraduate Student**

A student enrolled in a four-year bachelor's degree program