

FORM AND ATMOSPHERE:
THE ETCHINGS OF PAUL RESIKA
1995 - 1998

FORM AND ATMOSPHERE:
THE ETCHINGS OF PAUL RESIKA
1995 - 1998

MAY 6 TO JUNE 20, 1998

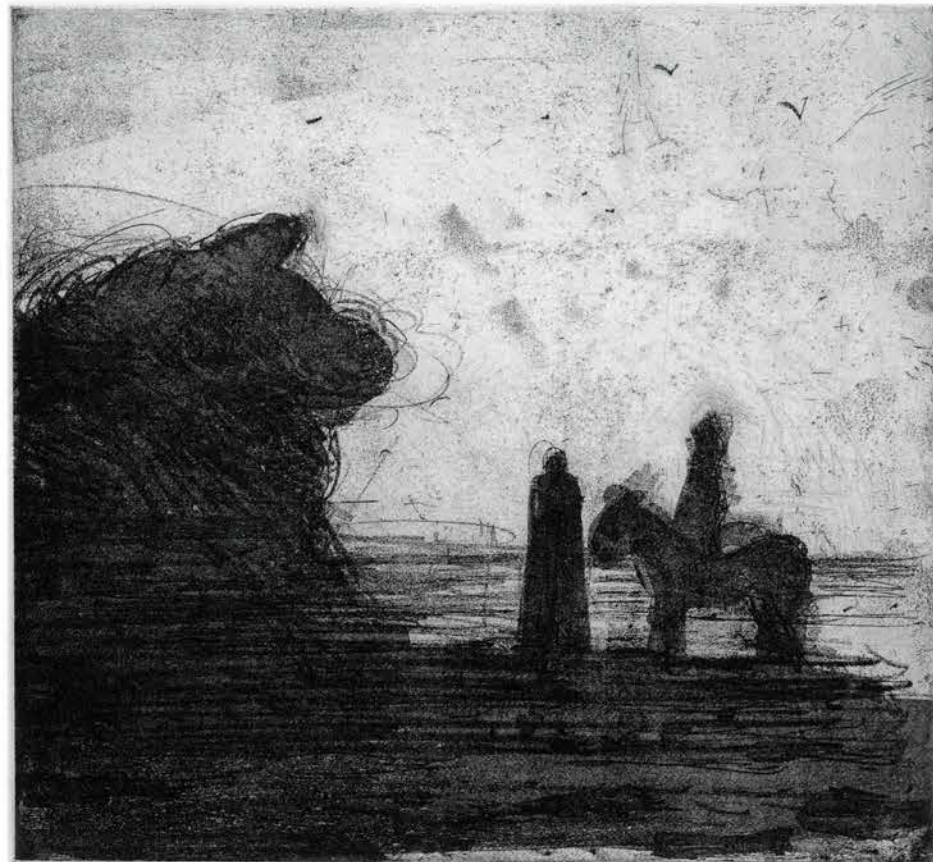
LORI BOOKSTEIN FINE ART

50 EAST 78TH STREET, 2A NEW YORK, NY 10021

TEL 212 439-9605 FAX 212 439-9698



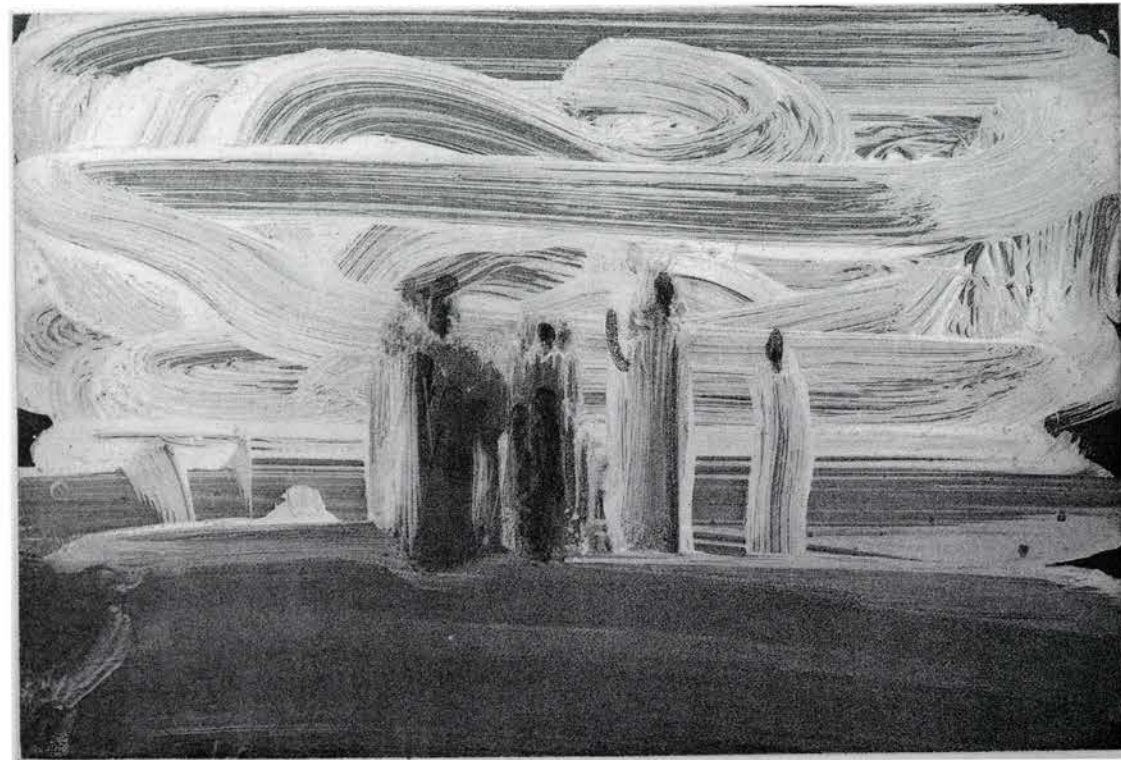
No. 5



No. 13



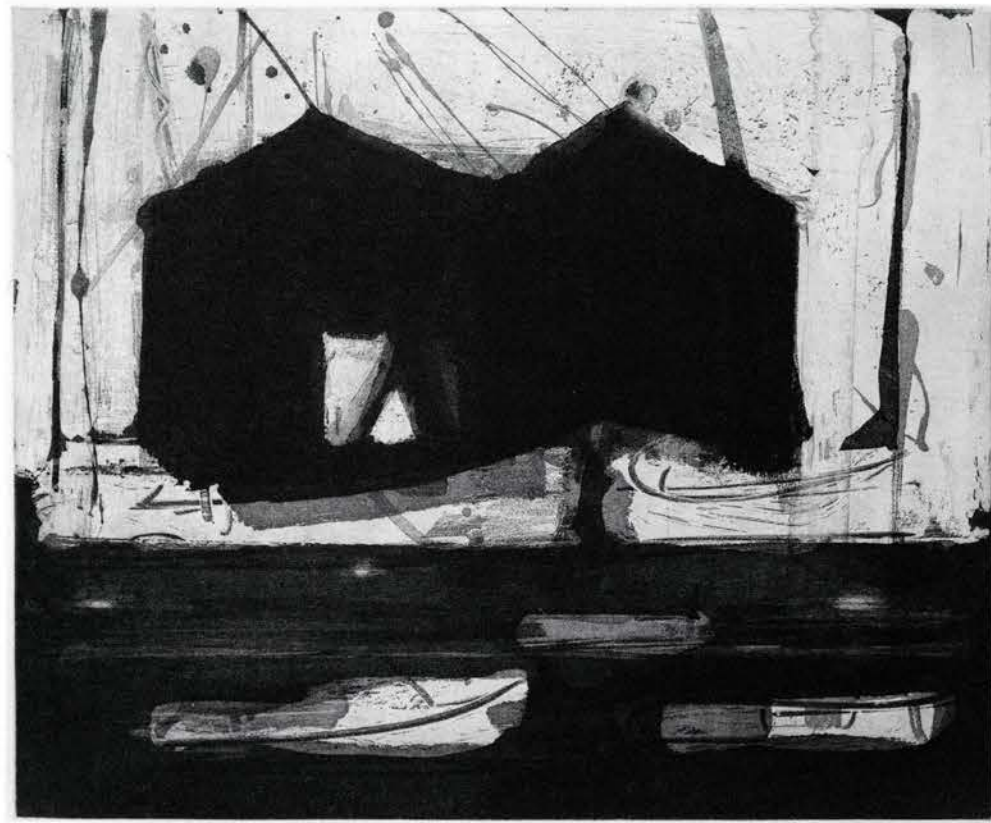
No. 3



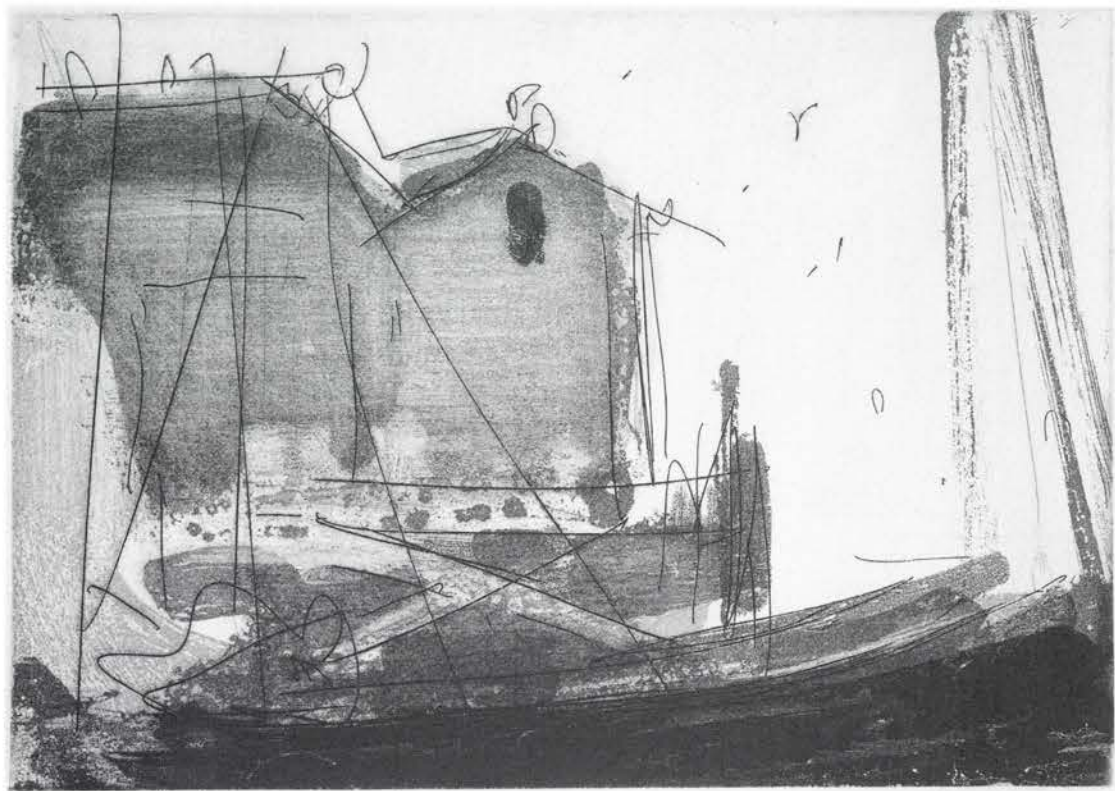
No. 4



No. 14



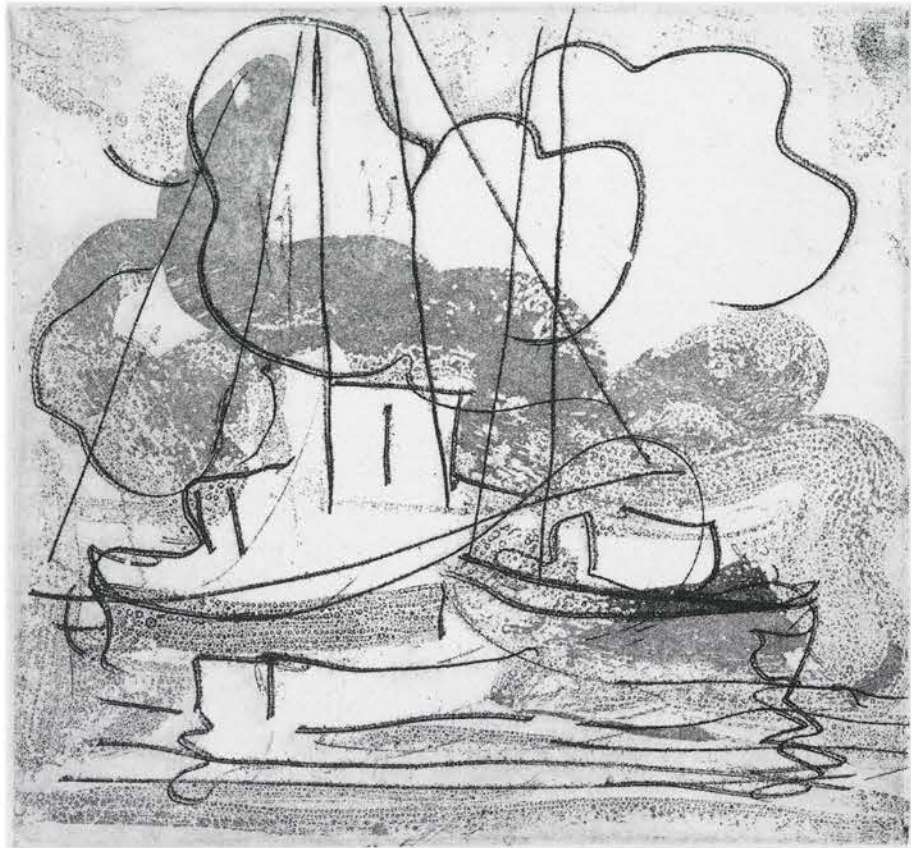
No. 8



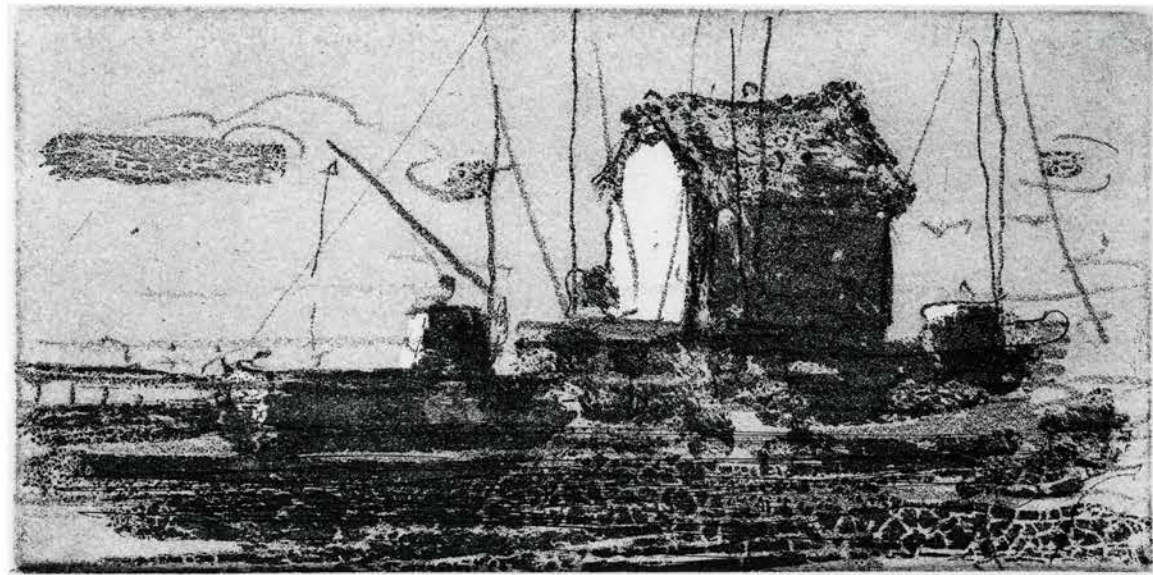
No. 2



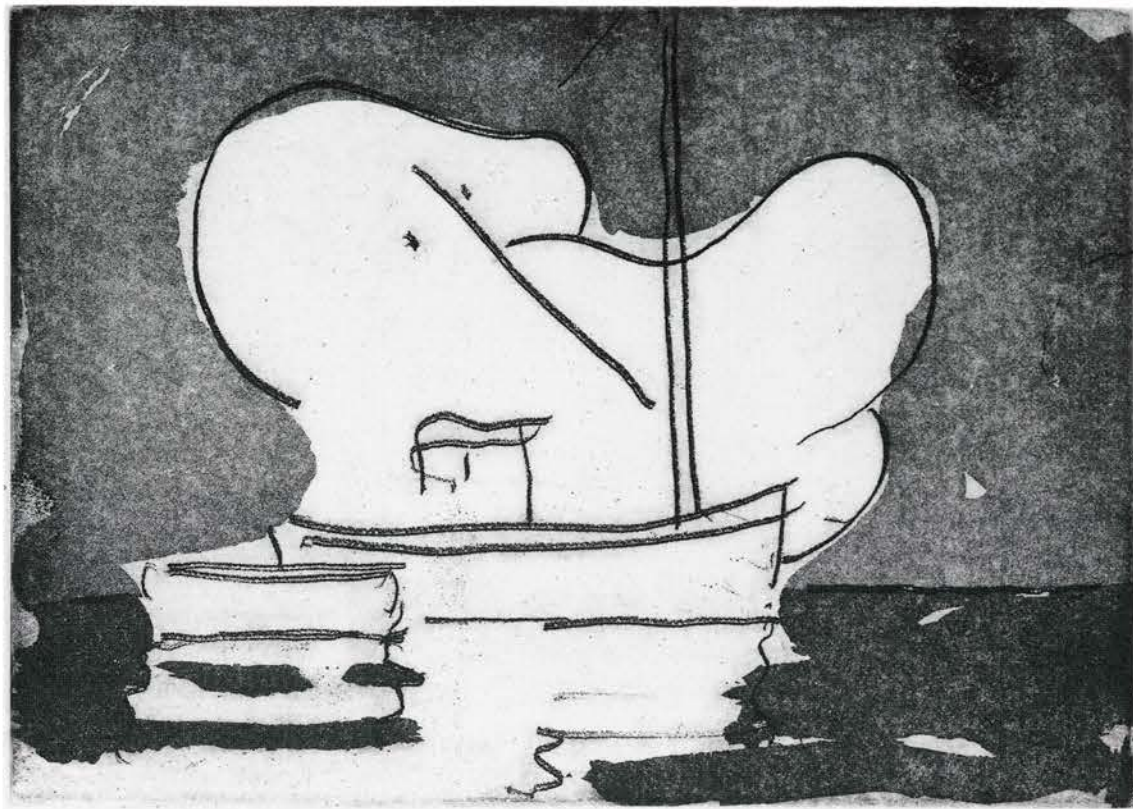
No. 7



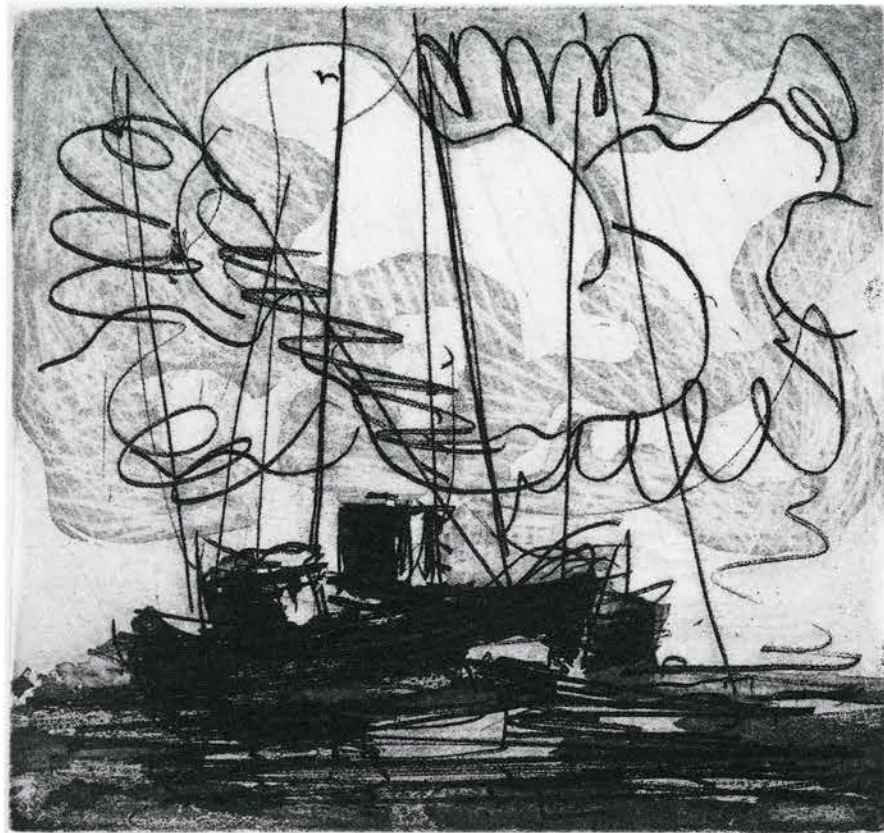
No. 19



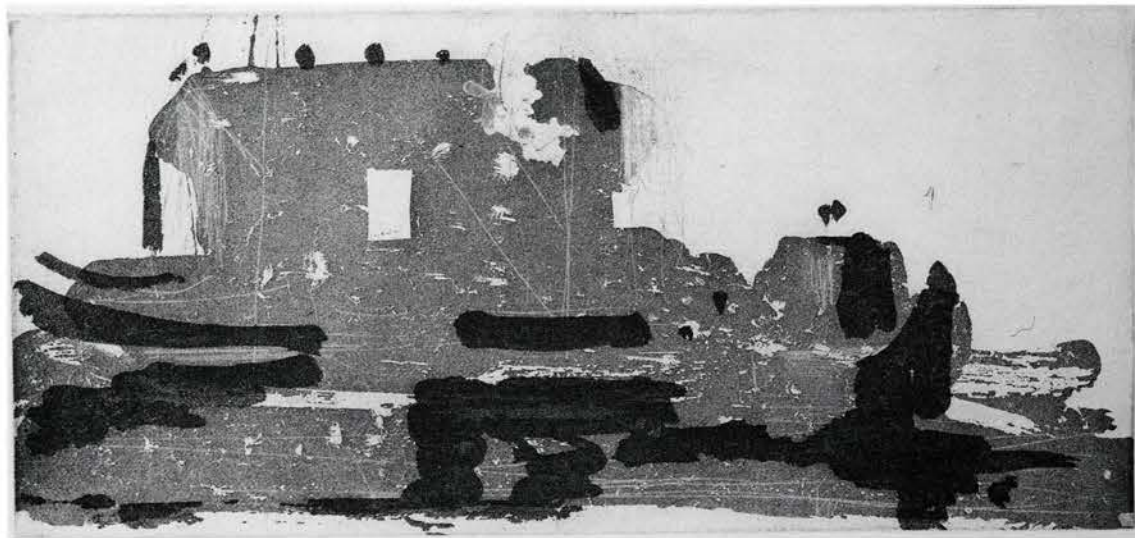
No. 15



No. 30



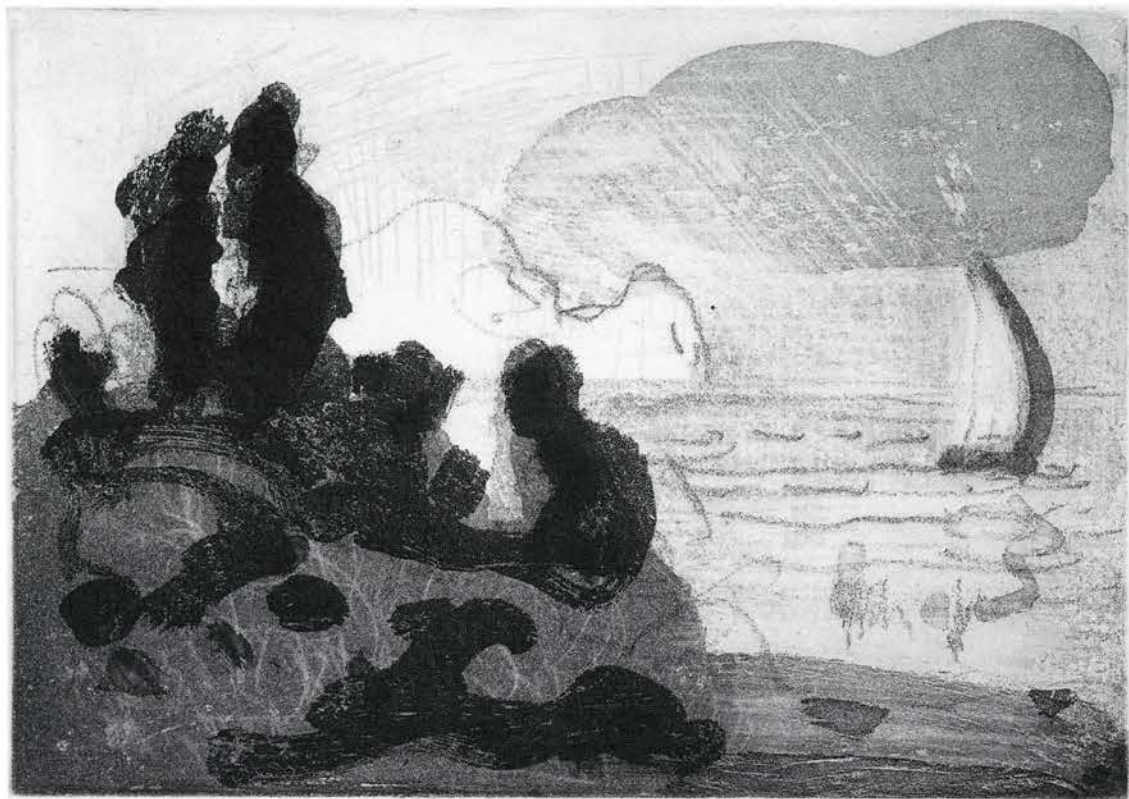
No. 18



No. 16



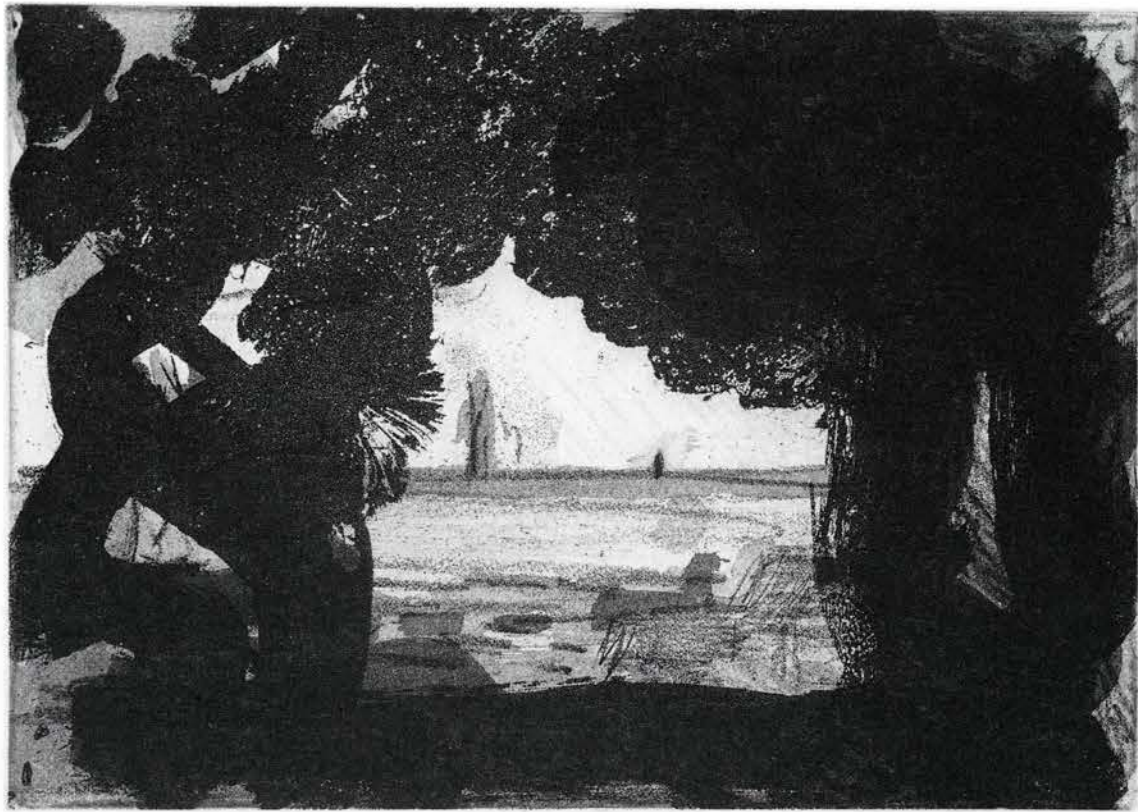
No. 29



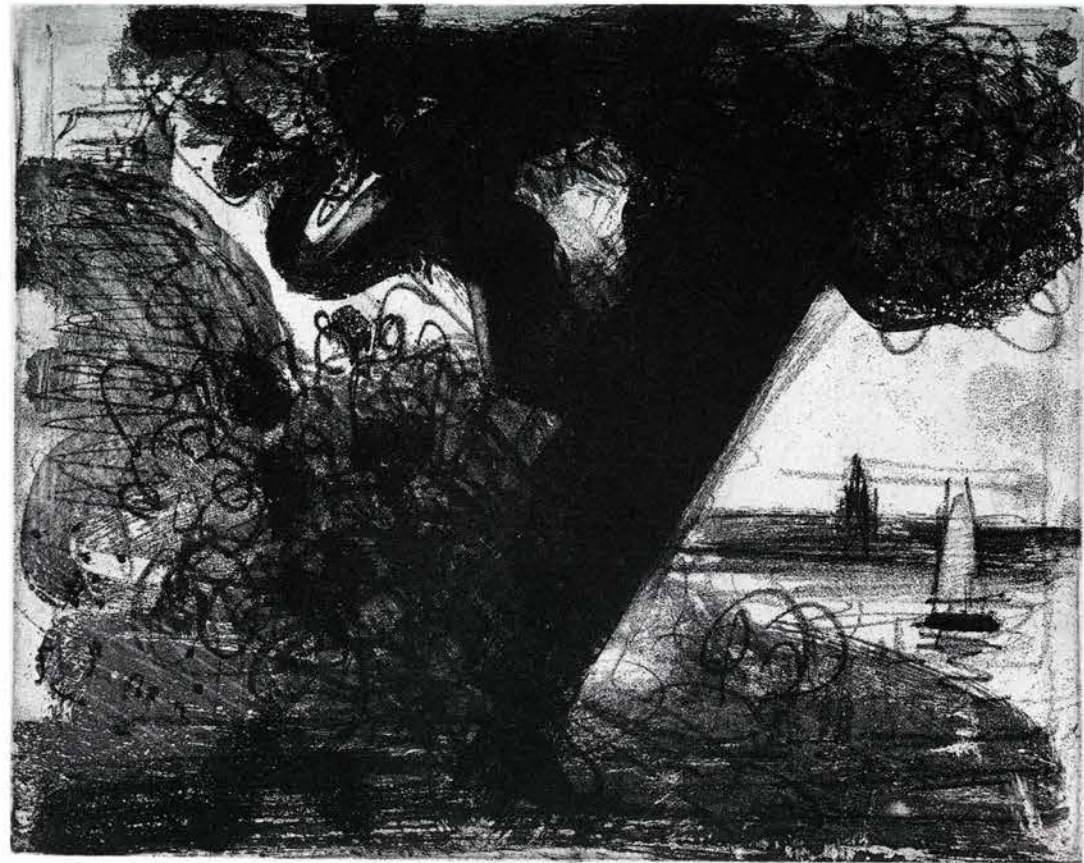
No. 26



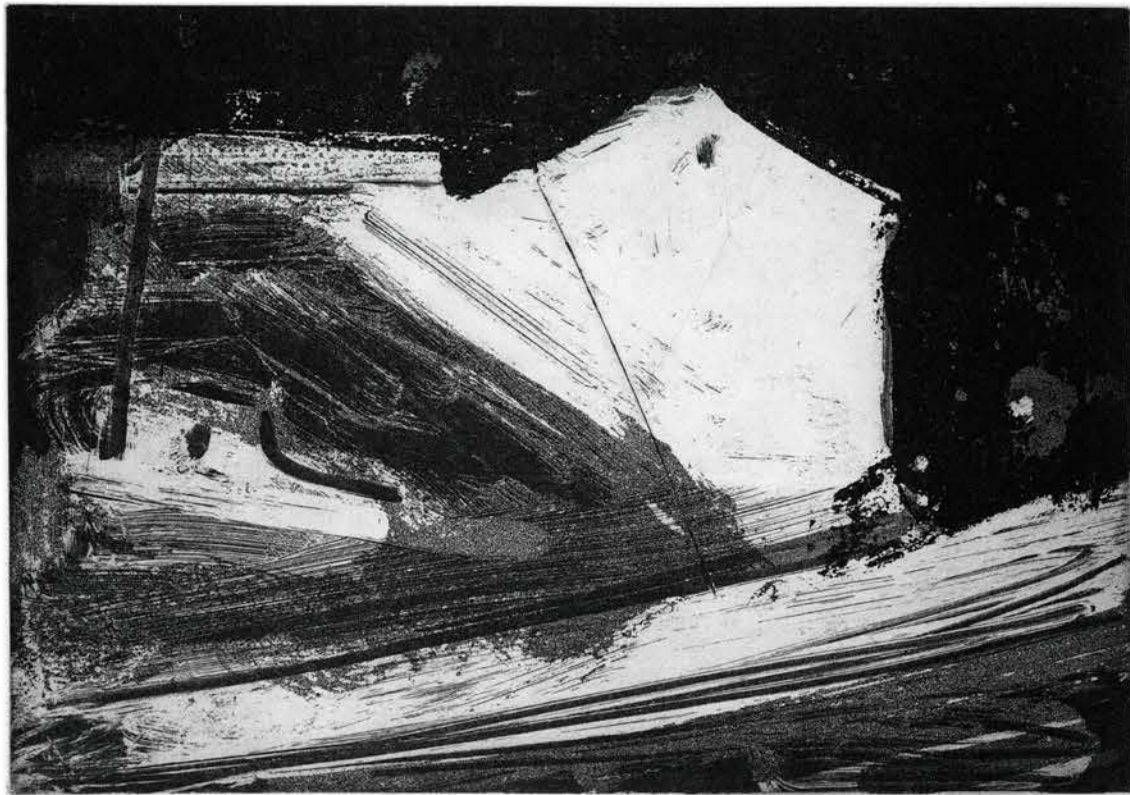
No. 28



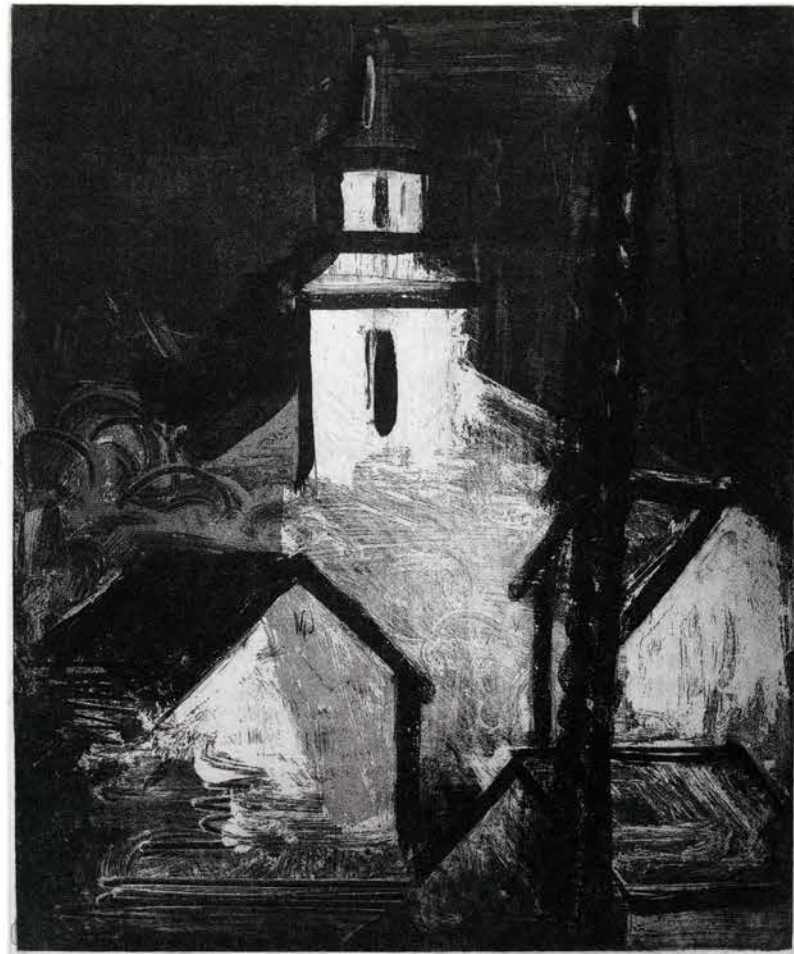
No. 31



No. 21



No. 6



No. 25

CHECKLISTS

BLACK AND WHITE ETCHINGS

1. FIGURES ON THE BEACH, 1994
3 x 4 inches
edition of 25
2. CLASSIC PIER, 1995*
6 1/2 x 9 1/4 inches
edition of 35
3. ENDYMION, 1995*
12 13/16 x 17 3/8 inches
edition of 35
4. FIGURES ON THE BEACH, 1995*
10 1/2 x 15 7/8 inches
edition of 35
5. FIGURES WITH DOG, 1995*
9 1/8 x 13 1/2 inches
edition of 35
6. STORM PIER, 1995*
8 13/16 x 12 3/4 inches
edition of 35
7. PIER AT NIGHT, STORMY SKY, 1996*
7 x 9 1/2 inches
edition of 8
8. DARK PIER AND BOATS, 1996*
14 3/4 x 17 3/4 inches
edition of 30
9. FIGURES AND CLIFF, 1996
8 x 9 3/4 inches
edition of 10
10. LITTLE PROVINCETOWN, 1996
4 x 3 3/4 inches
edition of 19
11. PROVINCETOWN, NIGHT VIEW, 1996
2 7/16 x 6 1/2 inches
edition of 35
12. PROVINCETOWN, BLACK WATER, 1996
4 x 9 1/4 inches
edition of 35
13. RIDER AND CLIFF, 1996*
10 1/2 x 11 1/2 inches
edition of 15
14. BOATHOUSE WITH MAST, 1997*
7 7/8 x 9 1/4 inches
edition of 8
15. BOATHOUSE AND BOATS, 1997*
3 7/8 x 7 7/8 inches
edition of 15
16. BOATHOUSE HORIZONTAL (first state), 1997*
7 3/4 x 14 3/4 inches
edition of 5
17. BOATHOUSE, SHADOW, 1997
4 3/4 x 5 7/8 inches
edition of 15
18. BOATS, SWIRLING SKY, 1997*
6 3/4 x 7 1/4 inches
edition of 15

19. CLOUDS AND BOATS I, 1997*
6 ¹/₁₆ x 7 ⁷/₁₆ inches
edition of 5
20. CLOUDS AND BOATS II, 1997
6 ¹/₁₆ x 7 ⁷/₁₆ inches
edition of 15
21. RYDER'S TREE, 1997*
7 ³/₄ x 9 ³/₄ inches
edition of 40
22. SELF PORTRAIT, 1997*
5 ⁷/₈ x 3 ³/₄ inches
edition of 10
23. SELF PORTRAIT, 1997
5 ³/₄ x 3 ¹/₁₆ inches
edition of 5
24. SELF PORTRAIT, 1997
8 ¹/₄ x 6 ¹/₁₆ inches
edition of 5
25. STEEPLE AT NIGHT, 1997*
17 ³/₄ x 14 ³/₄ inches
edition of 3
26. THE RETURN OF ODYSSEUS, 1997*
6 ¹/₂ x 9 ¹/₄ inches
edition of 10
27. THREE SAILBOATS, 1997
10 ³/₄ x 13 ³/₄ inches
edition of 10
28. THROUGH THE TREES, 1997*
10 ³/₄ x 13 ³/₄ inches
edition of 10
29. TWO TREES, THE RAYS, 1997*
7 x 9 ¹/₄ inches
edition of 10
30. WHITE CLOUD, 1997*
4 ³/₄ x 6 ³/₄ inches
edition of 15
31. SEASCAPE THROUGH TREES, 1997*
6 ⁷/₈ x 9 ⁷/₈ inches
edition of 10
32. NIGHT (SAIL), 1997
8 ¹/₄ x 6 ¹/₁₆ inches
edition of 10
33. BOATS IN THE SEA, 1998
4 ⁷/₈ x 5 ¹/₁₆ inches
edition of 10
34. STEEPLE AT NIGHT (second state), 1998
17 ³/₄ x 14 ³/₄ inches
edition of 8

*ILLUSTRATED

HANDPAINTED AQUATINTS

1. HOUSE (SEILLANS), 1996
8 x 9 ³/₄ inches
2. HOUSE, GREY TREE (SEILLANS), 1996
8 x 9 ³/₄ inches
3. HOUSE, PINK (SEILLANS), 1996
8 x 9 ³/₄ inches
4. HOUSE, RED ROOF, OLIVE TREE (SEILLANS), 1996
8 x 9 ³/₄ inches
5. OLIVE AND CYPRESS (FAYENCE), 1997
9 ¹/₄ x 8 inches
6. HILL, HOUSE AND OLIVE TREES (FAYENCE), 1997
9 ³/₄ x 8 inches
7. HOUSE AND OLIVE TREE (SEILLANS), 1997
8 x 9 ³/₄ inches
8. HOUSE, BLUE TREE (SEILLANS), 1997
8 x 9 ³/₄ inches
9. HOUSE, RED ROOF, BLUE TREE (SEILLANS), 1997
8 x 9 ³/₄ inches
10. HOUSE, RED SKY (SEILLANS), 1997
8 x 9 ³/₄ inches
11. HOUSE, BLUE SKY, BLUE TREE (SEILLANS), 1997
8 x 9 ³/₄ inches

COLORED PRINTS

1. FLOWERS AND SAILS, RED, 1996
colored lithograph, 15 ³/₄ x 11 ⁷/₈ inches
edition of 15
2. FLOWERS AND SAILS, BLUE, 1996
colored lithograph, 15 ³/₄ x 11 ⁷/₈ inches
edition of 15
3. FLOWERS AND SAILS, YELLOW, 1996
colored lithograph, 15 ³/₄ x 11 ⁷/₈ inches
edition of 15
4. FLOWERS AND SAILS, ORANGE, 1996
colored lithograph, 15 ³/₄ x 11 ⁷/₈ inches
edition of 5
5. THROUGH THE TREES (3 March 1998), 1998
colored etching, 10 ³/₄ x 14 inches
edition of 5

PAUL RESIKA

Born New York City, 1928

1940-44 Studied with Sol Wilson, New York

1945-47 Attended Hans Hofmann School of Fine Art, New York

1950-53 Venice and Rome

SELECTED PUBLIC COLLECTIONS

American Academy of Arts and Letters, New York

Chase Manhattan Bank, New York

Colby College, Waterville, Maine

Dartmouth College, Hanover, New Hampshire

Exxon Corporation, New York

Charles B. Goddard Center, Ardmore, Oklahoma

Heckscher Museum, Huntington, New York

IBM Corporation, New York

Indianapolis Museum of Art, Indiana

MetLife Collection, New York

Metropolitan Museum of Art, New York

Mills College, Oakland, California

Mitsubishi Collection, New York

Municipal Gallery, Bordoghera, Italy

National Academy of Design, New York

National Museum of American Art, Smithsonian Institution, Washington, D.C.

Neuberger Museum, State University of New York at Purchase

Owensboro Museum of Fine Art, Kentucky

Palace of Culture, Warsaw, Poland

Parrish Art Museum, Southampton, New York

Sheldon Memorial Art Gallery, University of Nebraska, Lincoln

The Society of Memorial Sloan Kettering Cancer Center, New York

Time Warner, Inc., New York

University of Arizona Museum of Art, Tucson

University of Wyoming Art Museum, Laramie

Weatherspoon Art Gallery, Greensboro, North Carolina

Paul Resika's graphics are represented by

Lori Bookstein Fine Art

Paul Resika's paintings are represented by

Salander-O'Reilly Galleries

BERTA WALKER GALLERY

208 Bradford Street

Provincetown, MA 02657

(508) 487-6411

PINNACLE GALLERY

Savannah College of Art and Design

P.O. Box 3146

Savannah, GA 31402-3146

(912) 239-1486

THE PRINT ROOM

SORDONI ART GALLERY

Wilkes University

Wilkes-Barre, PA 18766

(717) 408-4325

WRIGHT STATE UNIVERSITY ART GALLERIES

3640 Colonel Glenn Highway

Dayton, OH 45435

(937) 775-2973

SCHICK ART GALLERY

Skidmore College

Saratoga Springs, NY 12866

(518) 584-5000

© 1998 Lori Bookstein Fine Art

Photography: Osamu Nishihira

Printing: The Fillit Group, Bridgehampton, NY

Project Coordinator: Laura Rothschild

LORI BOOKSTEIN FINE ART
NEW YORK CITY