

**BALANCE AND ASSEMBLY:  
Shawn Dulaney and Lee Levine  
January 20 - February 24, 1991**

**BALANCE AND ASSEMBLY:**  
**Shawn Dulaney and Lee Levine**  
January 20 - February 24, 1991



Sordoni Art Gallery  
Wilkes University

Please join us on  
Saturday, January 19, 1991  
The artists will discuss their work  
at 2 p.m. in the Schaeffer Lecture Hall  
of Stark Learning Center.

A reception for the artists  
will follow the presentation from  
3:00 to 4:30 p.m.  
in the gallery

# SHAWN DULANEY

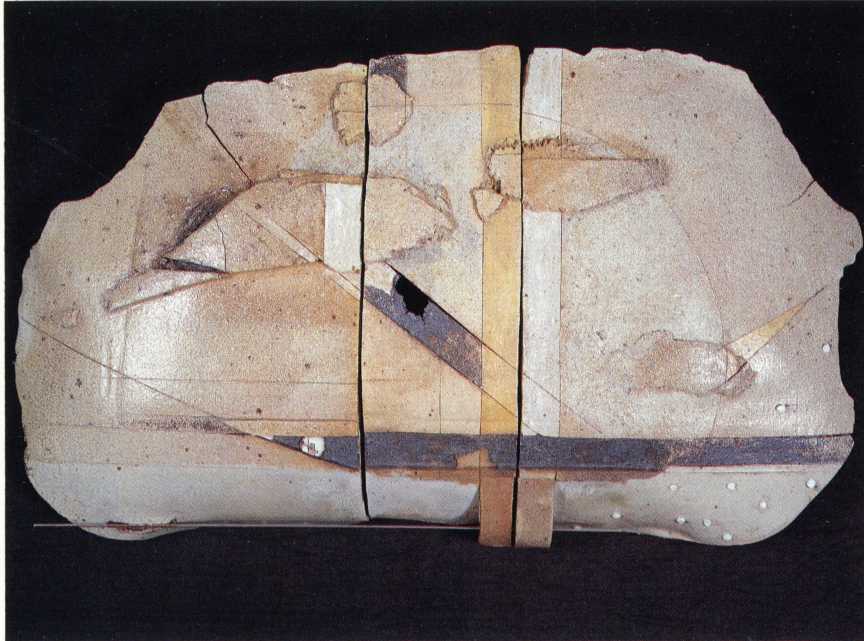


*Discernment*, 1990  
Monotype, 30 x 40 inches

*In trusting a certain lack of control, each new work emerges. I don't know the paintings when I first paint them. They each have a distinct personality which I get to know as we interact. It is not one sided. I start with a clear idea, then the painting suggests another direction. It pulls me one way, I push it another. After struggle and discovery it emerges as its own entity. The paintings prove to be a projection of what is occurring in me but has not yet consciously appeared. Painting is a realization of my own immensity and insignificance.*

Shawn Dulaney, 1990

# LEE LEVINE



*Continental Drift #33*, 1988  
Salt fired stoneware (assemblage), 21 x 38 x 5 inches

*These forms of ceramic or cement are bodies, islands and continents exhibiting the very physical or even geographic collisions, erosions, growth and transformations that are our world. The work evolves from sketches but it is the weight of the materials and the energy and movement (force) involved in constructing each piece that determines each image. They struggle to stand or float, sometimes at peace, sometimes at odds with the universe.*

Lee Levine, 1990



SORDONI GALLERY • 150 SOUTH RIVER STREET • WILKES-BARRE, PENNSYLVANIA 18766-0001