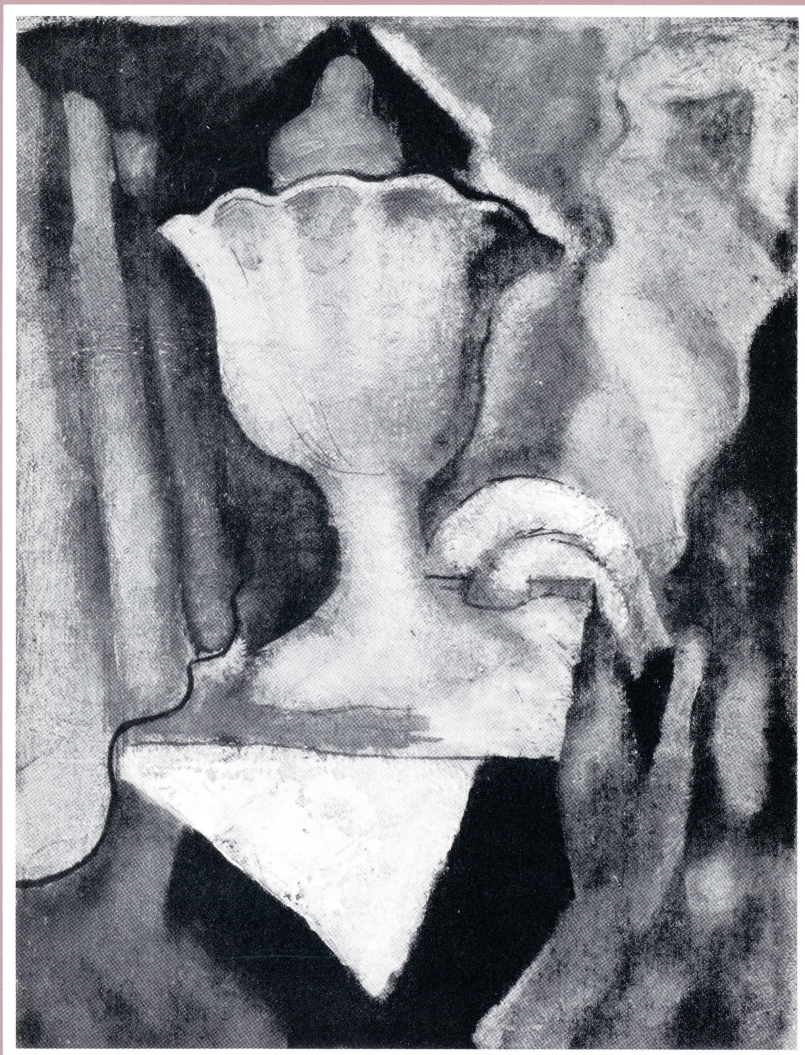


A SURVEY OF
AMERICAN ART
1815-1980:

from the Collection of the Museum of Art
THE PENNSYLVANIA STATE UNIVERSITY
August 26 through September 23, 1984



Catalog number 15

SORDONI ART GALLERY
WILKES COLLEGE

Charged by the dean of the College of Arts and Architecture, the late Walter H. Walters, to provide a "window to the world," The Pennsylvania State University Museum of Art opened its doors to the public for the first time in October of 1972. Three exhibitions had been organized for this premier and great excitement about the future developed even in those early days.

Masterworks by Pennsylvania Painters in Pennsylvania Collections and a showcase for works by the visual arts faculty of the university were two of the inaugural exhibitions. The third was the first showing of, what at the time was, a very meager permanent museum collection. There had been no tradition of collecting for over one hundred years. Discovered in and collected from offices, hallways and closets across the breadth of the campus were a mere score of art works deemed suitable for exhibition in the museum.

Included were a stone seated Buddha, a bronze sculpture by the American artist William Zorach, and two seventeenth century Dutch portraits. The Milton Avery given in the mid-fifties by Roy Neuberger, the Waldo Peirce as a gift of the artist, and *Street in Manayunk* by Francis Speight acquired in 1944, one of my favorite paintings in the collection, were included in this inaugural showing and are also in the current exhibition at the Sordoni Art Gallery.

To help the fledgling museum onto a more firm footing, then university president Dr. John Oswald made available unrestricted gift funds for the purchase of works of art. With this help approximately forty more works were added. The total collection of some sixty works of diverse styles, periods and cultures greeted the museum's first visitors. From today's vantage point those first efforts seem quite hit and miss but they still create very special memories for those of us who were instrumental in getting those few works of art onto the walls.

The presence of the museum and the professional staff have created confidence in alumni and friends and now significant collections of works of art are given to the university on a frequent basis. The thirty American pictures

loaned to the Sordoni Gallery for this exhibition are now part of a collection numbering nearly eighteen hundred objects.

In keeping with our "window on the world" philosophy, collecting has been on a broad front and includes such areas as contemporary European ceramics, Baroque painting, a fine Alexander Calder mobile, Japanese prints, early twentieth century European posters and drawings from the fourteenth century to the present. Major gifts in Oriental ceramics, Pre-Columbian pottery, African sculpture and a group of over forty small Greek and Roman artifacts give students and area residents an opportunity to see many facets of the world's artistic heritage.

As each work of art enters the Museum, many stories about its discovery and acquisition develop. The portrait of Mrs. Leonard Eichholtz is by her son Jacob and was given to the museum by his grandson. The paintings by Rembrandt Peale and John Kensett were the last two selected by the museum's founding director, William Hull, and bear inscriptions honoring his contributions. The Leon Kelly still life was found when visiting the home of another artist, the late Earl Horter, and purchased from his wife.

The prints by Paul Cadmus and Philip Evergood are part of a group of American prints of the 1930's acquired with funds given by the class of 1931. The beautiful little Oscar Bluemner gouache is the most recent purchase of the Friends of the Museum.

Act of Judith by Jerome Witkin, a young and vigorous artist, was given by The National Academy of Design with funds from the Henry Ward Ranger Fund. From just this short list it can be seen that the museum owes its growth to many institutions and individuals.

We are delighted to share these pictures with the visitors to the Sordoni Gallery and hope that other mutually beneficial ventures can be organized in the future.

William D. Davis
Interim Director
Museum of Art
The Pennsylvania State University

Checklist of the Exhibition

1. Rembrandt Peale (1778 — 1860)
Portrait of a Baltimore Gentleman, c. 1815
Oil on canvas mounted on aluminum and balsa panel, 29¹/₂ x 24¹/₂
83.3
2. Jacob Eichholtz (1776 — 1842)
Portrait of Mrs. Leonard Eichholtz, c. 1819
Oil on canvas, 29 x 24
76.79
3. Gibert Stuart (1755 — 1828)
Portrait of Thomas Apthorpe Cooper, c. 1820
Oil on panel, 13 ³/₄ x 11
80.54
4. Robert Salmon (b. England, 1775 — c. 1844)
The Low Light, Moonlight, 1828
Oil on board, 14 x 20
78.1
5. Thomas Hinckley (1813 — 1896)
Chatting on the Bridge, 1847
Oil on canvas, 22 x 30
77.3
6. John Kensett (1816 — 1872)
Flintstone, New Hampshire, c. 1850
Oil on canvas, 16¹/₂ x 23¹/₂
83.2
7. Alvin Fisher (1792 — 1863)
Landscape, 1862
Oil on canvas, 16 x 20
77.2
8. George Fuller (1822 — 1884)
A Girl with a Doll, n.d.
Oil on canvas, 23¹/₂ x 19¹/₂
74.56
9. William Sonntag (1822 — 1899)
Unspoiled Wilderness, 1896
Oil on canvas, 40 x 50
77.4
10. Max Weber (1881 — 1961)
Reverie, 1911
Mixed media on paper, 13¹/₁₆ x 9
79.129
11. John Singer Sargent (1856 — 1925)
San Vigilio, Lago di Garda, c. 1913
Watercolor, 15¹/₄ x 19⁷/₈
82.32
12. Frederick Carl Frieseke (1874 — 1939)
Baby in Pram, c. 1914
Oil on canvas, 25³/₄ x 32¹/₄
73.26
13. Kuniyoshi (b. Japan, 1893 — 1953)
Interior with Dress Form, 1928
Lithograph, 12¹/₂ x 8³/₈
75.105
14. Marsden Hartley (1877 — 1943)
Trees, c. 1928
Black ink on green paper, 27³/₄ x 20
73.84
15. Leon Kelly (b. France, 1901)
Still Life, c. 1930
Oil on canvas, 16³/₈ x 12⁵/₁₆
78.74
16. Konrad Cramer (1888 — 1963)
Peper's Gas Station, 1932
Oil on canvas, 24 x 30
79.140
17. Oscar Bluemner (1867 — 1938)
Triad Brilliant, Passaic River Hills, 1932
Gouache, 5⁵/₁₆ x 6⁷/₈
83.12
18. Paul Cadmus (b. 1904)
Y.M.C.A. Locker Room, 1934
Etching, 6³/₈ x 12⁵/₈
84.8
19. Philip Evergood (1901 — 1973)
Woman at Sewing Machine, n.d.
Lithograph, 7¹⁵/₁₆ x 11⁵/₈
84.7
20. Arthur Dove (1880 — 1946)
5 Studies for: Water Swirl, Canandaigua Outlet, 1937
Watercolor, 23¹/₂ x 32
73.102
21. Francis Speight (b. 1896)
Street in Manayunk, c. 1937 — 44
Oil on canvas, 33 x 43
44.1
22. Thomas Hart Benton (1889 — 1974)
Cradling Wheat, 1938
Lithograph, 9¹/₂ x 12
73.1
23. Waldo Peirce (1884 — 1970)
Max Anderson's Swimming Pool, 1944
Oil on canvas, 24¹/₂ x 39¹/₂
Gift of the artist
73.52
24. Milton Avery (1893 — 1965)
Pitcher Painter, 1945
Oil on canvas, 48 x 33¹/₂
57.1
25. Lennart Anderson (b. 1928)
Accident, 1955 — 57
Oil on canvas, 47 x 57
75.110
26. John Koch (b. 1909)
Study for Hercules and Prometheus
Pencil, 12¹/₂ x 9³/₄
73.79
27. David Levine (b. 1926)
Woman Lining up Material, 1968
Watercolor, 13³/₄ x 22¹/₄
73.35
28. Hobson Pittman (1899 — 1972)
Sweet Peas II, 1969
Watercolor, 11⁷/₈ x 17⁷/₈
73.11
29. Moses Soyler (b. Russia, 1899 — 1974)
Three Men, 1974
Oil on canvas, 25 x 30
80.11
30. Jerome Paul Witkin
Act of Judith, 1979 - 80
Oil on canvas, 60 x 60
83.45



Sordoni Art Gallery
Wilkes College

150 S. River Street/Wilkes-Barre, PA 18766

Non-Profit Org.
U.S. Postage
PERMIT #355
Wilkes-Barre, Pa.

Gallery Hours

Sunday through Friday 1-5 p.m.

Saturday 10 a.m. - 5 p.m.

Thursday evenings until 9