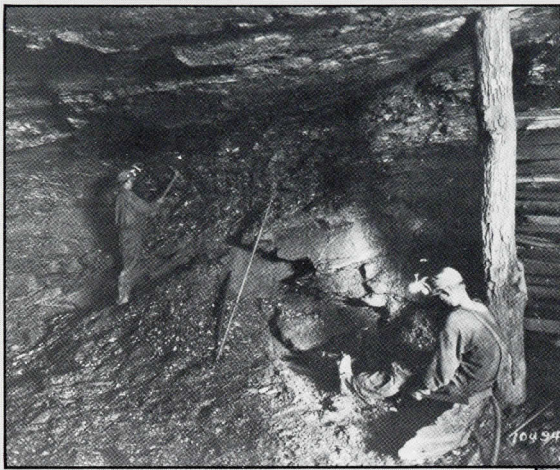




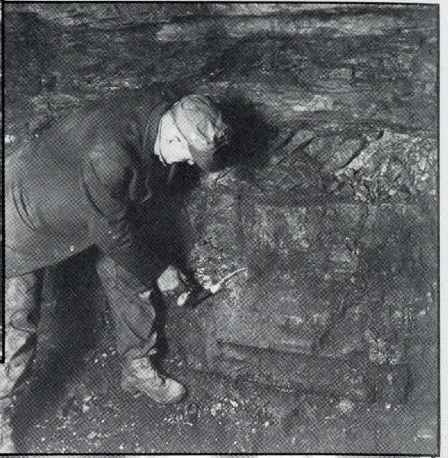
NOON HOUR RECREATION, KINGSTON #4 BREAKER BOYS' FOOTBALL TEAM

**PHOTOGRAPHIC
HISTORY OF
HARD COAL
MINING IN
NORTHEASTERN
PENNSYLVANIA**

**SORDONI ART GALLERY
WILKES COLLEGE
WILKES-BARRE, PA.**



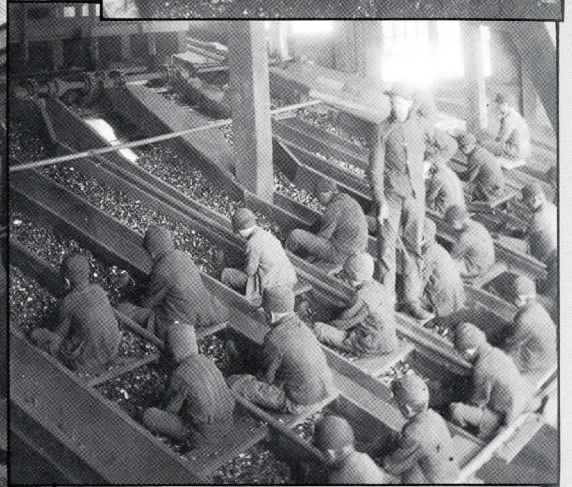
MINER'S WORKING AREA



MINER LIGHTING FUSE



ROTARY MINE CAR DUMPER



MALTBY BREAKER BOYS AT WORK



CHECK WEIGHMAN AND CHECK DOCKING BOSS



MINER WITH MULE PULLING COAL WAGON

Anthracite coal provided the United States with over 75% of its energy needs from the early 1800's until the mid-1900's. Ninety-five percent of this country's anthracite (and 90% of the world's) is found in nine counties in northeastern Pennsylvania. Thus for over a century the land and people of this small geographic area gave us the power to light and heat our homes, run our factories and carry us through the Industrial Revolution, World Wars I and II and the Great Depression. From their point of view, during this same 125-year period, anthracite coal mining was the dominant factor shaping the social, economic and physical environment of the area and its hard-working miners who had come from all parts of Europe in search of economic advancement. Their rich mixture of backgrounds and cultures combined with the rigors of the mining trade to produce the unique character of the anthracite region of northeastern Pennsylvania.

The exhibition depicts the era of anthracite mining in northeastern Pennsylvania from the late 1800's to the early 1900's with emphasis on the mines and mining operations, and the miners' lives, homes and families. This collection will be of interest to institutions, communities and organizations that had anthracite mining as part of their heritage and to those groups interested in learning about mines and mining life.

The exhibition consists of sixty-one black-and-white photographs with accompanying explanatory labels that document the origin, development, methods, preparation, human relationships and economic aspects of mining. They are matted, framed (16" x 20") and ready to hang. In addition, a ten-minute video tape cassette of the 1959 Knox Mining Disaster (the careless-mining accident that ended the era of anthracite deep mining in Wyoming Valley) is available as part of the exhibit. The exhibition comes in two crates (26" x 26" x 41" and 26" x 27" x 41"). The loan period is 4 to 8 weeks. Rental fee is \$100 plus one-way transportation. (There is no rental fee for public and parochial schools in the nine county anthracite region of northeastern Pennsylvania. Exhibitors must pay two-way transportation.) An instruction package and a limited number of posters will be provided to each exhibitor.

The exhibition was researched and organized for the Wilkes College Sordoni Art Gallery by Cara M. Berryman, Exhibitions Coordinator. William A. Siener, director of the Wyoming Valley Historical and Geological Society, acted as a consultant. The original photographs were selected from the collection of the Wyoming Valley Historical and Geological Society and from the collection of Ralph E. DeWitt, a prominent local photographer. The exhibition was funded by grants from the National Endowment for the Arts and by the Pennsylvania Council on the Arts. Contact the Wilkes College Sordoni Art Gallery for reservations.

Exhibitions

The exhibition program includes nine to twelve exhibits a year. It consists of loan exhibitions from other college and university galleries, major museums and loan services. The group and one-person exhibits feature established modern masters and artists currently involved in experimental approaches.

Education

The Gallery offers a variety of special events and educational programs. Lectures are given by visiting artists and staff. Films and exhibition catalogues are available to complement exhibitions. A docent training course is offered every spring. Guided tours are available for groups by appointment.

Membership

The Gallery maintains a membership program. Benefits range from lectures to travel opportunities, invitations to private openings, free exhibition catalogues, discounts on sales and a bi-monthly newsletter.

Gallery hours: daily 1-5 p.m.
9 p.m. Thursdays
10-5 p.m. Saturdays
1-5 p.m. Sundays
Closed Holidays

Telephone: (717) 824-4651 ext. 388

