

# VISITING THE

SORDONI  
ART GALLERY  
WILKES UNIVERSITY



## K-12 Program

## WHAT TO EXPECT

Educational programming at the Sordoni Art Gallery is made in collaboration with Pennsylvania State Certified teachers. Programming integrates state standards from major content areas including ELA, Writing, Math, History, and Science. Programs are designed to be accessible to students of any age and ability including special needs classes. Tours with related age-appropriate activities are created to target students' learning at the elementary, middle, and high school levels. Related standards and key terms are listed with each show to make it easy for teachers to see how each show relates to their level and content areas.



# TOUR SCHEDULE PREVIEW

## **Introduction to the Sordoni Art Gallery and Staff- 10 min**

Get to know the Sordoni Art Gallery and the Sordoni Art Gallery staff. Learn about attending the exhibitions and programs the gallery offers.

## **Guided Tour - 30 min**

The expert staff at the Sordoni Art Gallery will guide your group through the exhibition. Tours will provide important information regarding the historical and cultural background of the works as well as discuss the various tools, techniques, and philosophies used by featured artists. Connections are made to Common Core Standards and related content.

## **Independent Viewing/ Q&A - 20 min**

Take some time to explore the exhibition on your own to develop questions and answers about the work on display. Then, we'll come back together to chat about what we have uncovered.

## **Hands-On Workshop - 45 min**

Ready to take art into your own hands? We will take time to apply what we have learned in a workshop where we will create art using the technique and themes seen throughout the exhibition.



# THE ONE ROSE: CELEBRATING THE LIFE & LEGACY OF ROSE O'NEILL

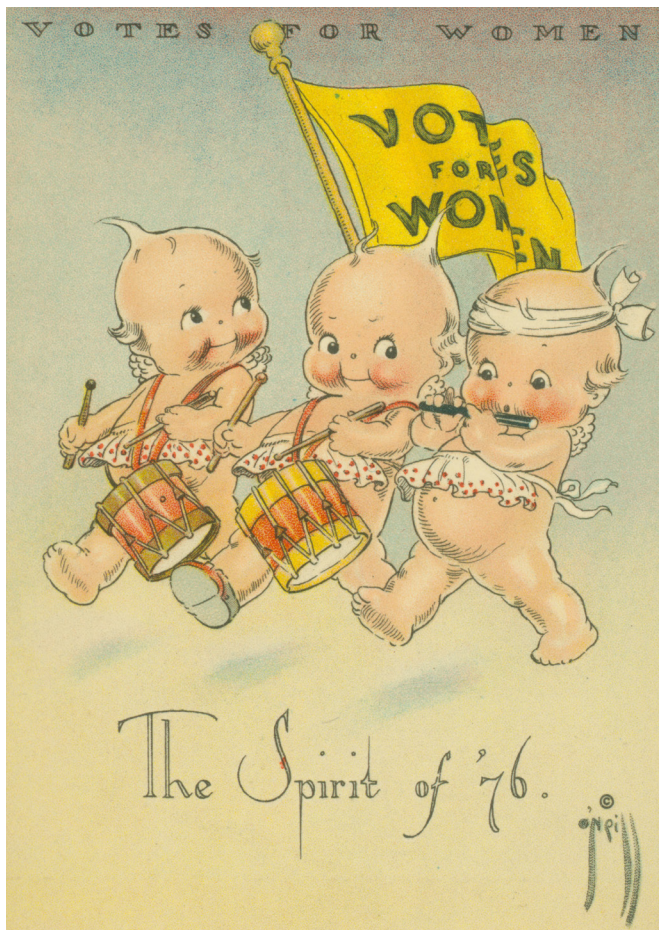
Aug. 25, 2023 - Oct. 8, 2023



## ABOUT THE SHOW

Rose O'Neill, an American illustrator of the early 20th century, was a woman of many accomplishments. She was the first woman illustrator for *Puck* magazine, the leading men's magazine of the late-19th century, entertaining its readers with considerable satire and political commentary; creator of the Kewpie Doll, the subject of a major merchandising campaign, which made her fortune; activist for women's suffrage; and accomplished artist and sculptor of "Sweet Monsters" featured in exhibitions in Paris (1921) and New York (1922). These tremendous accomplishments of a woman who refused to fit within a mold are why we chose her to celebrate our golden anniversary. *The One Rose: Celebrating the Life & Legacy of Rose O'Neill* honors the life and career of Wilkes-Barre born artist at the Sordoni Art Gallery, located just streets away from where the artist was born.





## ARTIST HIGHLIGHTS

- Born in Wilkes-Barre, Pennsylvania
- Known for being the first female comic artist and the first woman to illustrate for *Puck Magazine*
- Wrote, illustrated, and published the novel *The Loves of Edwy* among others
- Creator of the Kewpie cartoon which became so popular that it was turned into a doll
- A major player in the Suffrage Movement

## TERMS TO KNOW

You probably already know your Elements and Principles of Visual Art (9.1.A),- color, line, shape, form, value, texture, and space - but here are some other terms you may want to be familiar with before visiting the gallery:

### Elementary

Myth   Poet   Comic   Vote   Medium  
 Storyteller   Artist   Novel   Monster

### Middle

Manufacture   Illustration   Constitution  
 Inspire   Mythology   Activist  
 Political Cartoon

### High

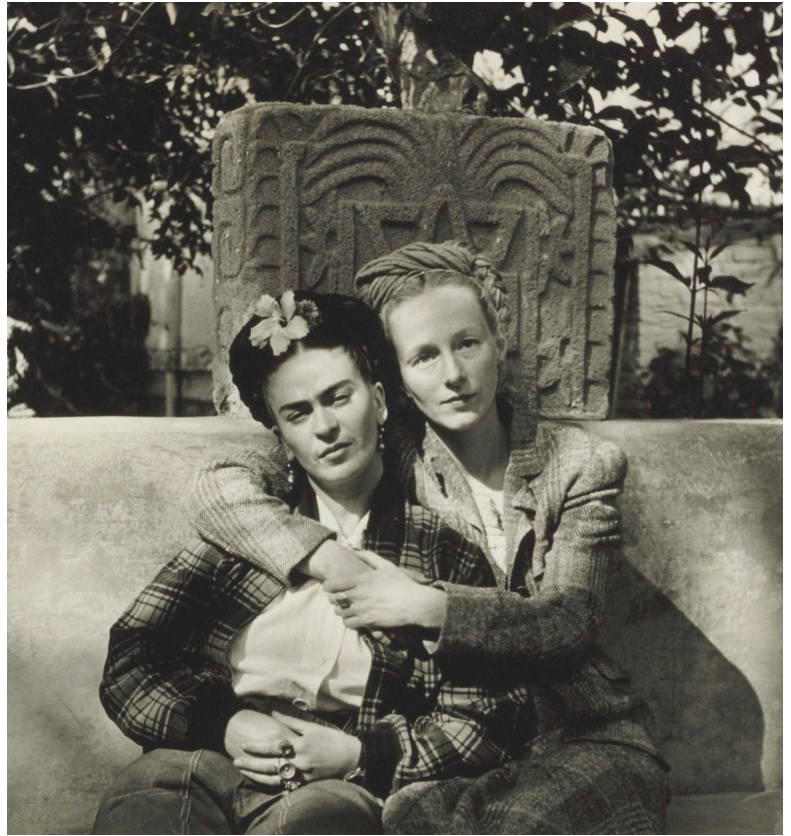
Gender Conventions   Narration   Suffrage  
 Marketing   Satire   Parody  
 Greek Muses   Humorist

# FRAMING MOMENTS: PHOTOGRAPHY FROM THE KALAMAZOO INSTITUTE OF THE ARTS

*Nov. 7, 2023- Feb. 4, 2024*

## ABOUT THE SHOW

Throughout its history, the Kalamazoo Institute of the Arts has collected works by photographers whether studio, documentary, photojournalists, or artists that documented or preserved their unique points of view spanning the mid-nineteenth century to present. By focusing on the time periods works were produced and collected, curator Dr. Deborah Willis reimagines and explores what stories and moments the KIA curators gravitated to by iconic photographers such as Ansel Adams, Dawoud Bey, Sheila Pree Bright, Dorothea Lange, Gordon Parks, Irving Penn, Cindy Sherman, Deborah Turberville, and James VanDerZee, among others.



## ARTIST HIGHLIGHTS

- **Ansel Adams-** Ansel Adams was an American landscape photographer and environmentalist whose photographs captured the American West, which helped to establish National Parks in America. Some of his work also focused on injustices in American history including dislocation and displacement of peoples in Manzanar, California and the Japanese internment camp that existed there during World War II.
- **Dorothea Lange-** Dorothea Lange was an American documentary photographer who documented life during the Great Depression. Dorothea Lange used her photography to promote social change and justice. She used her art to spread awareness and gain aid for those who needed it most. She worked for Franklin Delano Roosevelt's New Deal programs that worked to provide support for the nation's farmers.
- **Andy Warhol-** Andy Warhol is known for being an icon and a visionary in pop art and culture. His tomato soup cans can be recognized anywhere. Between 1970 and 1987, Andy Warhol took tens of thousands of photographs that would serve as the basis for his portraits, silkscreen paintings, drawings and prints. Warhol photographed actors, artists, politicians, clubbers, as well as self-portraits. Andy Warhol wanted to capture and chronicle his life and its happenings.
- **Gordon Parks-** Gordon Parks is known for being one of the greatest photographers of the twentieth century. He worked to capture American life and his work maintained a focus on race relations, poverty, civil rights, and urban life. Along with being a photographer he was also known for being a composer, author, and filmmaker.

# TERMS TO KNOW

You probably already know your Elements and Principles of Visual Art (9.1.A),- color, line, shape, form, value, texture, and space - but here are some other terms you may want to be familiar with before visiting the gallery:

## Elementary

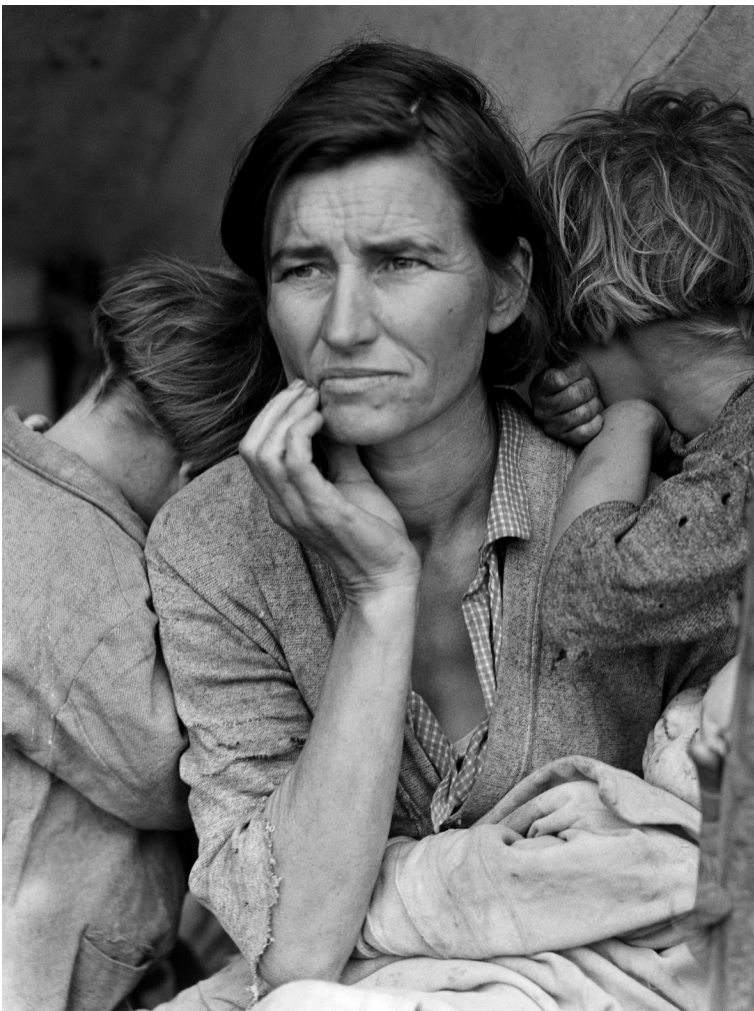
Photograph	Camera	Emotions	Equality	Leader	Service	Environment
	Medium	Photography	Symmetry	Landscape	Portrait	

## Middle

Subject	Culture	World War II	Conservation	The Great Depression	Influence
	Urban vs Rural	Balance	Depth of Field	Digital Media	Pixel

## High

Social Justice	Aesthetics	Pop Culture	Humanitarian	Racism	Aspect
Ratio	Resolutions	Rule of Thirds	Sequencing		



# UBUHLE WOMEN: BEADWORK AND THE ART OF INDEPENDENCE

Mar. 1, 2024- May 24, 2024



## ABOUT THE SHOW

*Ubuhle Women: Beadwork and the Art of Independence* showcases a new form of bead art, the ndwango, developed by a community of women living and working together in rural KwaZulu-Natal, South Africa. The six artists featured in the exhibition call their paintings in beads ndwangos, which translates as “cloth” or “rag.” The black fabric on which the Ubuhle women work is reminiscent of the Xhosa headscarves and skirts that many of them grew up wearing. By stretching the textiles like a canvas, the artist transforms the flat cloth into a contemporary art form colored with Czech glass beads. Combining the skills handed down through generations, and working in their own unique style “directly from the soul,” according to artist Ntombephi Ntobela, the women create abstract as well as figurative subjects for their ndwangos. Ubuhle means “beauty” in the Xhosa and Zulu languages and it describes the shimmering

quality of light on glass that for the Xhosa people has a particular spiritual significance. From a distance, each panel seems to be formed from a continuous surface. As each tiny individual bead catches the light, the viewer becomes aware of the meticulous skill that went into each work and the scale of ambition. A single panel can take more than 10 months to complete.

## TERMS TO KNOW

You probably already know your Elements and Principles of Visual Art (9.1.A),- color, line, shape, form, value, texture, and space - but here are some other terms you may want to be familiar with before visiting the gallery:

Elementary				
Bead	Community	Abstract	Tradition	Pattern
Texture	Style	Feelings	Memory	
Middle				
Textile	Perspective	Plantation	Mindfulness	Memorial
	Rural	Contemporary	Mosaic	
High				
Colonialism	Commercialism	Migration	Spirituality	
Grief	Independance	Ndwangos		

## ARTIST HIGHLIGHTS

- **Zanele Muholi-** Zanele Muholi is a South African artist who works primarily with photography. She describes herself as an “activist artist”. She uses her art to support women’s rights in South Africa, and is well known for her depiction of the LGBT communities, which often face discrimination.
- **Ntombephi “Induna” Ntobela-** Ntombephi “Induna” Ntobela was born in the Eastern Cape and is a member of the Mpondo Xhosa. Her superb beading skills are what lead her to co-found Ubuhle in 1999. She is called “Induna”, which means leader and is a term of great respect in South Africa. This title also shows her feelings about her community and her sense of responsibility as “the guardian of its future.”
- **Zandile Ntobela-** Zandile Ntobela was also born in the Eastern Cape and is a member of the Mpondo Xhosa. She is an accomplished beader and gained much success from her work. She is inspired by the blooming cherry blossom trees and she has created a pattern inspired by them. This pattern is a signature in her work.
- **Thando Ntobela-** Thando Ntobela was born in Bizana in the Eastern Cape. She is Zandile’s full sister and Induna’s half sister. She has recently taken charge of the Ubuhle shop, where artists can sell

jewelry and smaller beaded panels. She is also in charge of the inventory, which comes from the Czech Republic.

- **Nonhlakanipho Mndiyatha-** Nonhlakanipho Mndiyatha was born near Bizana in the Eastern Cape. Her signature pattern is a white house, a traditional Xhosa rondavel, and it appears in all her works.
- **Zondlile Zondo-** Zondlile Zondo is the only Zulu member of the group. Her heritage is seen through her distinctive style. She uses primary colors and bold patterns that reflect her culture and Zulu beading traditions. Her work has inspired other artists and has been vital to this art form’s development.



# BENEFITS OF VISITING AN ART GALLERY

Visiting an art gallery has a positive impact on your students. Some of the benefits include:

- Visual arts help students build literacy skills
- Students get a firsthand look at historical objects and documents, including but not limited to: newspapers and magazines from the early 20th century, original art from around the world, photographs documenting major events in American history
- The arts help students develop intercultural awareness, understanding, and communication skills
- Art galleries provide students with the opportunity to access history, other cultures, and the natural world while building critical thinking and problem solving skills
- Art galleries target social emotional skills like empathy and compassion
- Students have access to hands-on, authentic learning experiences



# PA STATE STANDARDS

## ROSE O'NEILL

### Elementary

Standard - 9.1.V.K.A1  
 Standard - 9.1.V.K.B1  
 Standard - 9.1.V.K.J1  
 Standard - 9.3.K.F1  
 Standard - 9.3.K.G1  
 Standard - 9.4.K.B1  
 Standard - CC.1.2.K.A  
 Standard - CC.1.2.K.A  
 Standard - CC.1.2.K.C  
 Standard - CC.1.5.K.A  
 Standard - 6.2.K.C  
 Standard - 8.2.K.B  
 Standard - 5.3.4.E  
 Standard - 5.3.4.G

### Middle

Standard - 8.2.7.A  
 Standard - CC.8.5.6-8.D  
 Standard - CC.8.5.6-8.E  
 Standard - CC.8.5.6-8.F  
 Standard - CC.8.5.6-8.G  
 Standard - CC.1.2.7.J  
 Standard - CC.1.3.7.E  
 Standard - CC.1.5.7.A

### High

Standard - CC.1.2.11-12.B  
 Standard - CC.1.2.11-12.F  
 Standard - CC.1.2.11-12.K  
 Standard - 5.3.12.D  
 Standard - 5.3.12.F  
 Standard - 5.3.12.H  
 Standard - 6.2.12.C  
 Standard - 8.2.12.A  
 Standard - 11.4.12.E

## FRAMING MOMENTS

### Elementary

Standard - 5.1.1.C  
 Standard - 5.1.1.F  
 Standard - 5.2.1.C  
 Standard - 5.3.1.H  
 Standard - 5.4.1.D  
 Standard - 6.1.1.A  
 Standard - 6.4.1.A  
 Standard - 7.1.1.A  
 Standard - 7.1.1.B  
 Standard - 8.1.1.A  
 Standard - 8.1.1.C  
 Standard - 5.2.3.A  
 Standard - 5.3.3.F  
 Standard - 6.1.3.A  
 Standard - 7.3.3.A  
 Standard - 8.1.3.B

### Middle

Standard - 5.2.7.D  
 Standard - 5.3.7.C  
 Standard - 5.3.7.H  
 Standard - 6.1.7.A

### High

Standard - 5.2.9.B  
 Standard - 5.2.9.C  
 Standard - 5.2.12.B  
 Standard - 5.2.9.D  
 Standard - CC.8.5.11-12.F  
 Standard - CC.8.5.9-10.B

## UBUHLE WOMEN

### Elementary

Standard - 5.1.2.C  
 Standard - 5.2.2.C  
 Standard - 5.4.2.A  
 Standard - 5.4.2.C  
 Standard - 6.1.2.B  
 Standard - 6.2.2.A  
 Standard - 6.2.2.B  
 Standard - 6.5.2.A  
 Standard - 7.3.2.A  
 Standard - 8.4.2.C

### Middle

Standard - 5.4.8.C  
 Standard - 6.1.8.A  
 Standard - 6.1.8.B  
 Standard - 6.2.8.A  
 Standard - 6.2.8.G  
 Standard - 6.4.8.B  
 Standard - 7.3.8.A  
 Standard - 8.4.8.B  
 Standard - 6.5.8.A

### High

Standard - 6.1.9.A  
 Standard - 6.1.9.B  
 Standard - 6.2.9.D  
 Standard - 7.3.9.A  
 Standard - CC.1.2.9-10.A



# About the Sordoni Art Gallery

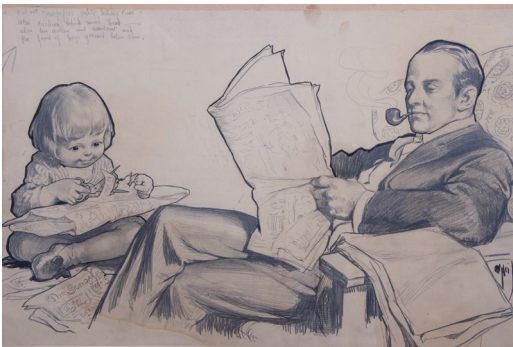
The Sordoni Art Gallery is a visual art exhibition space located at Wilkes University. Originally founded as a source of community hope after the Agnes Flood of 1972, the Sordoni Art Gallery brings diverse artists of regional, national, and international reputation to the Northeast PA region.

The mission of the Sordoni Art Gallery is to encourage an appreciation of the arts and an understanding of its role in society through direct engagement with art. Our main focus is to present high-quality exhibitions, related programming, and publications in a wide range of media, topics, cultures, and time periods. We have designed an experience aligned with the Visual Art Curriculum Framework and the Standards Aligned System (SAS) developed by the Pennsylvania Department of Education.

Our vision is to be a recognized and respected center for the creation of innovative learning environments and programs for the appreciation and study of visual art that benefit the academic and cultural community of Wilkes University and the surrounding region.

The Sordoni Art Gallery is a free-admission gallery. All Sordoni exhibitions and events are free and open to the public. Our state-of-the-art facilities are located at 141 S. Main St, Wilkes-Barre, PA. Please visit [www.wilkes.edu/arts/sordoniartgallery/](http://www.wilkes.edu/arts/sordoniartgallery/) for more information.

Please contact Melissa Carestia, Assistant Director to  
book your visit with us today!  
[melissa.carestia@wilkes.edu](mailto:melissa.carestia@wilkes.edu)



Jell-O illustration drawing - Man Reading Newspaper  
Illustrated by Rose O'Neill



Bongiswa Ntobela  
Beshu



Arrest Of Martin Luther King, Jr., Birmingham, Alabama  
Charles Moore

**50**  
**GOLDEN**  
ANNIVERSARY  
SORDONI ART GALLERY

**Located at 141 S. Main Street**  
in downtown Wilkes-Barre, PA  
Visitor Parking available

**Call:** 570-408-4325  
**Look:** [wilkes.edu/sordoniartgallery](http://wilkes.edu/sordoniartgallery)  
**Follow:** @sordoniartgallery

**Gallery Hours:**

Tuesday – Friday: 10 AM – 5 PM  
Saturday and Sunday: 12 - 5 PM  
*Closed on Mondays and University Holidays*